



# INSTRUCTIONS

-J03334

REV. 06-11-2004

Kit Numbers 75263-04, 75264-04, 67939-04 and 68699-04

## ONE AND ONE-HALF INCH GAUGE HOUSING KIT

### General

These gauge housing kits are designed to be used with a Harley-Davidson Genuine Motor Accessories one and one-half inch gauge (sold separately) kit and gauge bracket kit when mounted on the following motorcycles:

1996 and later XL Custom  
1996 and later FXD/C/X/T  
1996 and later FLHR/I  
1996 and later FXSTB/I, FLST/C/F/I, FXDWG  
1996 and later FXST/I  
1996 and later FXSTD/I  
2005 and later FLSTN  
1996 and later FLHR/C  
1996 and later FLSTS/I, FXSTS/I

See the Service Parts illustration for kit contents.

#### NOTE

A Service Manual for your motorcycle is available from your Harley-Davidson Dealer.

### Installation

1. Follow the instructions in the gauge bracket kit to install the gauge bracket.
2. Follow the instructions in the one and one-half inch gauge kit to install the isolation gasket and the gauge.

3. See the Service Parts illustration. Thread the standoff (2) into the back of the gauge and hand tighten.
4. Fit the grommet from the gauge kit over the wire harness conduit.
5. Follow the instructions in the gauge kit to thread the wire leads through the opening in the side of the housing and fit the grommet to the housing (3). Terminate the leads, as required, and secure to the terminal posts of the gauge.

#### NOTE

For FXD/C/X/T model kits (Part No. 67939-04 and 68699-04) orient the gauge housing with the drain hole down.

6. Fit the gauge housing to the isolation gasket and secure the housing with the flathead screw (1). Tighten the flat-head screw to snug the housing up against the isolation gasket.

#### NOTE

Over tightening may damage housing or the gauge.

7. Inspect the circumference of the housing lip to be sure it seals at the isolation gasket.



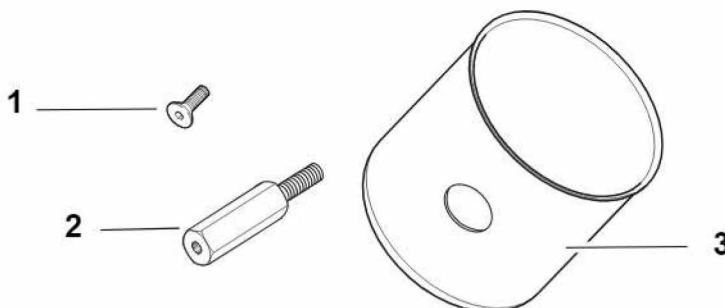
## Service Parts

Part Nos. 75264-04, 75263-04  
67939-04 & 68699-04

Date 06/04

### One and One-Half Inch Gauge Housing Kit

i06469



Item	Description (Quantity)	Part No.
1	Flathead screw	94224-00
2	Standoff	72346-04
3	Gauge housing	
	Cylindrical	Not sold separately
	Spherical	Not sold separately