



INSTRUCTIONS

-J02779

REV. 01-29-2004

Kit Number 29042-04

HIGH FLOW AIR CLEANER KIT

General

This High Flow Air Cleaner Kit is designed for installation on 2004 and later Sportster® models.

CAUTION

Harley-Davidson* motorcycles equipped with some Screamin' Eagle* high-performance engine parts may not be used on public roads, and in some cases, must be restricted to closed course competition. This engine-related performance part is intended for racing applications, and is not legal for sale or use in California on pollution-controlled motor vehicles.

Installation

CAUTION

Loosen backing plate-to-carburetor screws a few turns at a time, at the same time pulling backing plate away from carburetor, to prevent screws from engaging threads in backing plate inserts. If screws engage insert threads, the inserts may accidentally be pulled out of backing plate.

1. Remove original air cleaner and backing plate according to instructions in the appropriate Service Manual. Save original components; some will be reused with new air cleaner in this kit.
2. Install three screws (1) fully into backplate inserts.
3. See Service Parts Illustration. Peel backing paper off air cleaner-to-carburetor gasket (2) and apply to "carburetor side" of backplate. Make sure gasket holes are lined up with backplate holes. Install screws and gaskets with a small dab of loctite 243 (blue) to the threads.
4. Mount backplate (3) to carburetor. Align the three 1/4-20 screw holes in carburetor with the matching holes in the backplate. Insert the three screws (1) a few turns at a time to avoid breaking the backplate inserts loose. Tighten screws to 36-60 in-lbs (4.1-6.8 Nm).
5. **Remove O-Rings** from stock breather screws (6), apply Loctite® 243 (blue) and insert screws into threaded holes in the cylinder head and tighten stock breather screws to 10-20 ft-lbs (13.6-27.1 Nm).

6. Press breather hoses over breather screws and position outlet into guides and carburetor opening.

NOTE

This filter is a dry operating filter. No oil should be applied to the filter element.

7. Install the filter element (4) to the backplate. Insert the four screws (9). Apply Loctite® 243 (blue) and tighten screws to 55-60 in-lbs (74.6-81.3 Nm).
8. Attach spacers (10), with adhesive disks (12), to the filter element face while centering over screw holes.
9. Install the cover adapter (7) to the filter element face, make sure to line up the matching holes evenly around the spacers in the filter element. The arrow must point upwards for proper orientation.
10. Install the stock air cleaner cover over the cover adapter plate.
11. Align the hole and install the oval insert (5) on to the face of the stock cover with the two screws (11).
12. Tighten the screws to 36-60 in-lbs (4.1-6.8 Nm).

Air Filter Maintenance

INSPECTING FILTER ELEMENT

- Remove air cleaner cover and inspect filter element every 5000 miles, or more often when operating vehicle in adverse, dusty conditions.

Cleaning Filter Element

- Remove filter element from air cleaner assembly. Immerse element in an upright position (on its end) in a pan containing a shallow amount (3/4 the depth of filter pleats) of air filter cleaner/degreaser. Carefully "roll" the element within the solution along its perimeter until the entire outer surface of the filter pleats has been soaked. **Do not let dirty solution run to inside of filter.**
- Remove element from cleaner, and allow five minutes for cleaner to dissolve dirt. From the inside out, rinse the filter element with cold water. Shake off excess water, and allow filter element to air dry. **Do not dry with compressed air.**
- Do not add oil to this filter.



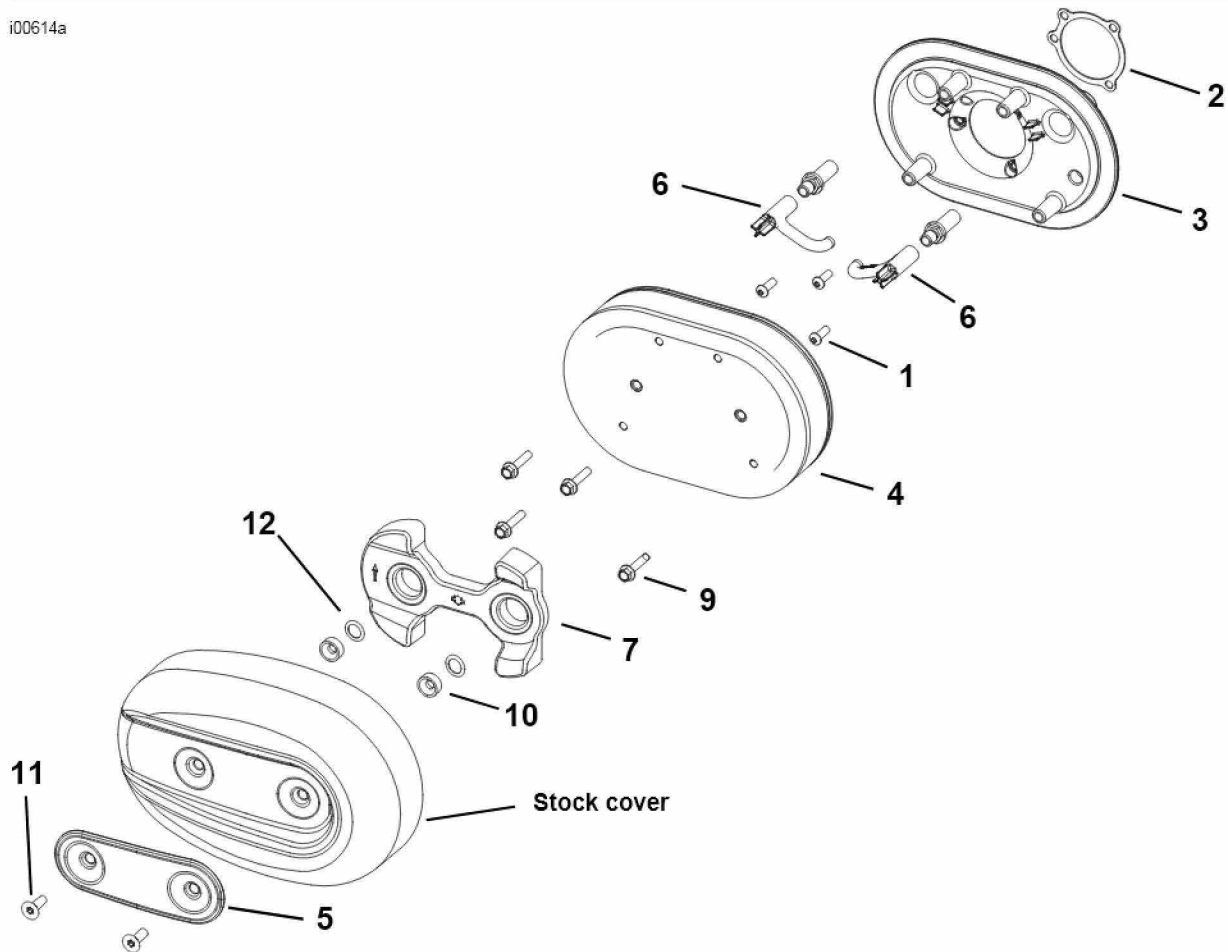
Service Parts

Part No. 29042-04

Date 01/2004

High Flow Air Cleaner Kit

i00614a



Item	Description	Part No.	Item	Description	Part No.
1	Screw, 1/4-20 x 3/4-in long button head (3)	864A	8	Loctite® (not shown)	94635-98
2	Gasket, Carburetor inlet	29268-03Y	9	Screws, 1/4-20 x 1-1/4-in long hex flange head (4)	3643
3	Backplate, Air Cleaner	29048-04	10	Spacer (2)	31507-04
4	Filter element, Air Cleaner	29044-04	11	Screw, 5/16-18 x 7/8-in long flat head chrome (2)	94113-95
5	Oval Insert, Air Cleaner	29051-04	12	Adhesive disk (2) separately	Not sold
6	Hose, Breather (2)	63520-04			
7	Adapter, Cover	29047-04			