



# INSTRUCTIONS

-J02653

2006-04-13

## "DETONATOR" CUSTOM WHEEL KIT

### GENERAL

#### Kit Number

44560-03, 44562-03, 44564-03, 44566-03, 44564-03A

#### Models

Table 1. Models

Kits	Models
44560-03	2000-later XL (Sportster®), 2000-2005 Dyna™ models, 2000-2002 Softail (except FLSTS and FXSTD) and 2000-2001 Touring models
44562-03	2003-later Softail® (except FLSTS and FXSTD). Does not fit 2006-later FXST, FXSTS, FXSTB and 2007-later FLSTF.
44564-03	2002-later FL Touring models. (2007-later requires the use of 3737A (5) screws and 6516HW (5) washers
44566-03	2000-later FXSTD
44564-03A	2002-later FL Touring

### Additional Parts Required

#### ⚠ WARNING

Rider and passenger safety depend upon the correct installation of this kit. Use the appropriate service manual procedures. If the procedure is not within your capabilities or you do not have the correct tools, have a Harley-Davidson dealer perform the installation. Improper installation of this kit could result in death or serious injury. (00333b)

#### NOTE

The cotter pin or spring clip for the axle nut must be replaced. They are available for purchase from your dealer. See your dealer for the correct part number for your model motorcycle.

A Service Manual for your model motorcycle is available from a Harley-Davidson Dealer.

### Kit Contents

See Figure 1 and Table 2.

### INSTALLATION

#### NOTICE

Do not re-use brake disc/rotor screws. Re-using these screws can result in torque loss and damage to brake components. (00319c)

#### NOTICE

Do not re-use sprocket mounting screws. Re-using sprocket mounting screws can result in torque loss and damage to the sprocket and/or belt assembly. (00480b)

Refer to the appropriate Service Manual for wheel removal and installation procedures.

See Figure 1. This kit contains the necessary parts for wheel installation, however, you will need to save the axle, axle nut, brake disc, and the drive sprocket for reinstallation.

#### NOTE

Follow the sprocket bolt torque procedure in your service manual or, if installing an accessory hardware kit, in the instruction-sheet included with the hardware kit.

### MAINTENANCE AND CLEANING

Chrome parts must be maintained regularly to ensure that they keep their original shine and luster.

1. Clean heavily-soiled wheel surfaces using Harley Wheel & Tire Cleaner Part Number 94658-98 applied with Harley Wheel & Spoke Brush Part Number 43078-99.
2. Thoroughly clean chrome with a good quality chrome cleaner, such as Harley Bright Chrome Cleaner Part Number 94683-99.
3. After cleaning and polishing, seal the finish with a good quality sealer such as Harley Glaze Polish and Sealant, Part Number 99701-84.



## SERVICE PARTS

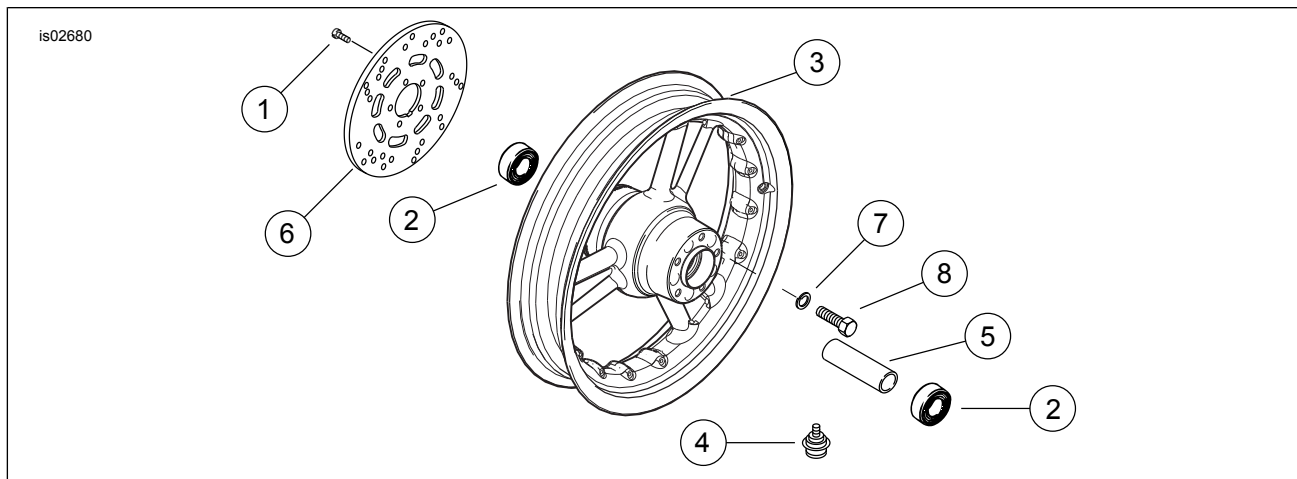


Figure 1. Service Parts: "Detonator" Custom Rear Wheel Kit

Table 2. Service Parts: "Detonator" Custom Rear Wheel Kit

Kit	Item	Description (Quantity)	Part Number
Kit 44560-03, 44562-03	1	Screw, brake disc, Torx (5)	43567-92
	2	Bearing assembly (2)	9267
	3	Detonator custom wheel	Not Sold Separately
	4	Valve stem assembly	43206-01
	5	Sleeve, bearing spacer	43608-00
Kit 44564-03, 44564-03A	1	Screw, brake disc, Torx (5)	43567-92
	2	Bearing assembly (2)	9247
	3	Detonator custom wheel	Not Sold Separately
	4	Valve stem assembly	43206-01
	5	Sleeve, bearing spacer	43517-00
Kit 44566-03	1	Screw, brake disc, Torx (5)	43567-92
	2	Bearing assembly (2)	9267
	3	Detonator custom wheel	Not Sold Separately
	4	Valve stem assembly	43206-01
	5	Sleeve, bearing spacer	43608-00
<b>Items Requiring Separate Purchase:</b>			
	6	Brake Disc	Reference Only
	7	Washer, sprocket (5)	Purchase Separately
	8	Screw, sprocket (5)	Purchase Separately

### NOTE

Items 7 and 8 must be purchased separately. See your dealer for the correct part numbers for your year and model motorcycle.

If installing Kit 44564-03 on a 2007 Touring model, you must use Part Number 3737A (5) screws and Part Number 6516HW (5) washers.