



# INSTRUCTIONS

-J06164

2015-05-01

## SCREAMIN' EAGLE PRO HIGH FLOW 58 MM EFI THROTTLE BODY AND MANIFOLD KIT

### GENERAL

#### Kit Number

27200026

#### Models

For model fitment information, see the P&A Retail Catalog or the Parts and Accessories section of [www.harley-davidson.com](http://www.harley-davidson.com) (English only).

#### Installation Requirements

This kit requires the separate purchase of a SE air cleaner kit that is compatible with the supplied 58 mm throttle body. See SE Pro catalog for available kits.

This kit requires LOCTITE® 243 (blue) for proper installation.

See appropriate sections in service manual for the special tools required to install this kit.

Proper installation of this kit also requires the use of Digital Technician™ at a Harley-Davidson dealer.

#### ▲ WARNING

**Rider and passenger safety depend upon the correct installation of this kit. Use the appropriate service manual procedures. If the procedure is not within your capabilities or you do not have the correct tools, have a Harley-Davidson dealer perform the installation. Improper installation of this kit could result in death or serious injury. (00333b)**

#### NOTE

*This instruction sheet references service manual information. A service manual for your model motorcycle is required for this installation. One is available from a Harley-Davidson dealer.*

#### Kit Contents

See Figure 3 and Table 1.

#### NOTE

*Installation of this kit by an authorized Harley-Davidson dealer will not impact your limited vehicle warranty.*

*The Product Information Label contained in this kit is a requirement of the California Air Resource Board (CARB) emission regulation.*

*Place the label on the right side of the frame directly beneath the VIN sticker. This label is not required outside the state of California.*

*The kit is intended for High Performance applications only. This engine-related performance part is legal for sale or use in California on pollution controlled motor vehicles.*

*Engine-related performance parts are intended FOR THE EXPERIENCED RIDER ONLY.*

### REMOVAL

#### Prepare for Service

1. Disarm security system.
2. Raise the motorcycle.
3. See the service manual. Remove seat.
4. See the service manual. Remove main fuse.

#### ▲ WARNING

**When servicing the fuel system, do not smoke or allow open flame or sparks in the vicinity. Gasoline is extremely flammable and highly explosive, which could result in death or serious injury. (00330a)**

5. See the service manual. Remove fuel tank.
6. See the service manual. Remove existing air cleaner assembly.
7. See the service manual.
  - a. Remove fuel line, fuel rail, injectors and bracket. Save parts for installation of NEW throttle body manifold.
  - b. Remove throttle body. Save intake seal flanges for installation of NEW throttle body manifold.

### INSTALLATION

#### Install Manifold

#### NOTE

*Throttle body assembly requires use of a compatible air cleaner backplate to draw together.*

1. See Figure 1. Install new manifold (3) to engine using new intake seals (4) and OE flanges and related fasteners. Tighten fasteners snugly enough to allow slight rotation of manifold during remaining assembly. Tighten when assembly is finished (that is, throttle body fully seated in manifold). See the service manual for torque spec.
2. Assemble seal ring (1) to manifold and apply assembly lube or oil to seal ring to prevent damage (tearing) during throttle body engagement.

3. Peel the protective strip off the backplate/throttle body gasket (6). Place the adhesive side onto the backplate. Align to the screw holes, and position the gasket carefully before firmly pressing the gasket into place.
4. Insert backplate button head screws (7) through the backplate (8) and screw into throttle body. Tighten snugly first. Torque when assembly is assembled (that is, throttle body fully seated in manifold).
5. Install (use grease or similar to hold in place) two O-rings (9) from kit in grooves around breather screw holes on throttle body side of backplate (8).
6. Insert OE breather screws through the backplate and related O-rings.
7. Apply Loctite 243 (blue) to breather screw threads and mating tapped holes in cylinder head.
8. Start threading breather screws into cylinder head but do not tighten.

**NOTE**

*To prevent tearing of the seal ring it is critical the manifold and throttle body remain parallel as they are drawn together.*

9. See Figure 2. Verify manifold (3) is aligned parallel to throttle body assembly (2). Adjust if necessary.
10. Alternately tighten both breather screws to draw evenly on the throttle body into manifold/seal ring. Tighten to 13.6–16.3 N·m (120–144 **in-lbs**).
11. See Figure 1. Tighten backplate screws to 6.2–6.8 N·m (55–60 **in-lbs**).

12. Lubricate the O-rings (10) with clean engine oil or white lithium grease. Install the O-rings onto the breather plugs (11). Press the breather plugs into the breather screw cavities.
13. Align the holes in gasket (12) with the holes in mounting ring (14) and the notches in the intake tube (13). Apply Loctite 243 (blue) to flat head screws (15). Tighten screws to 6.2–6.8 N·m (55–60 **in-lbs**).

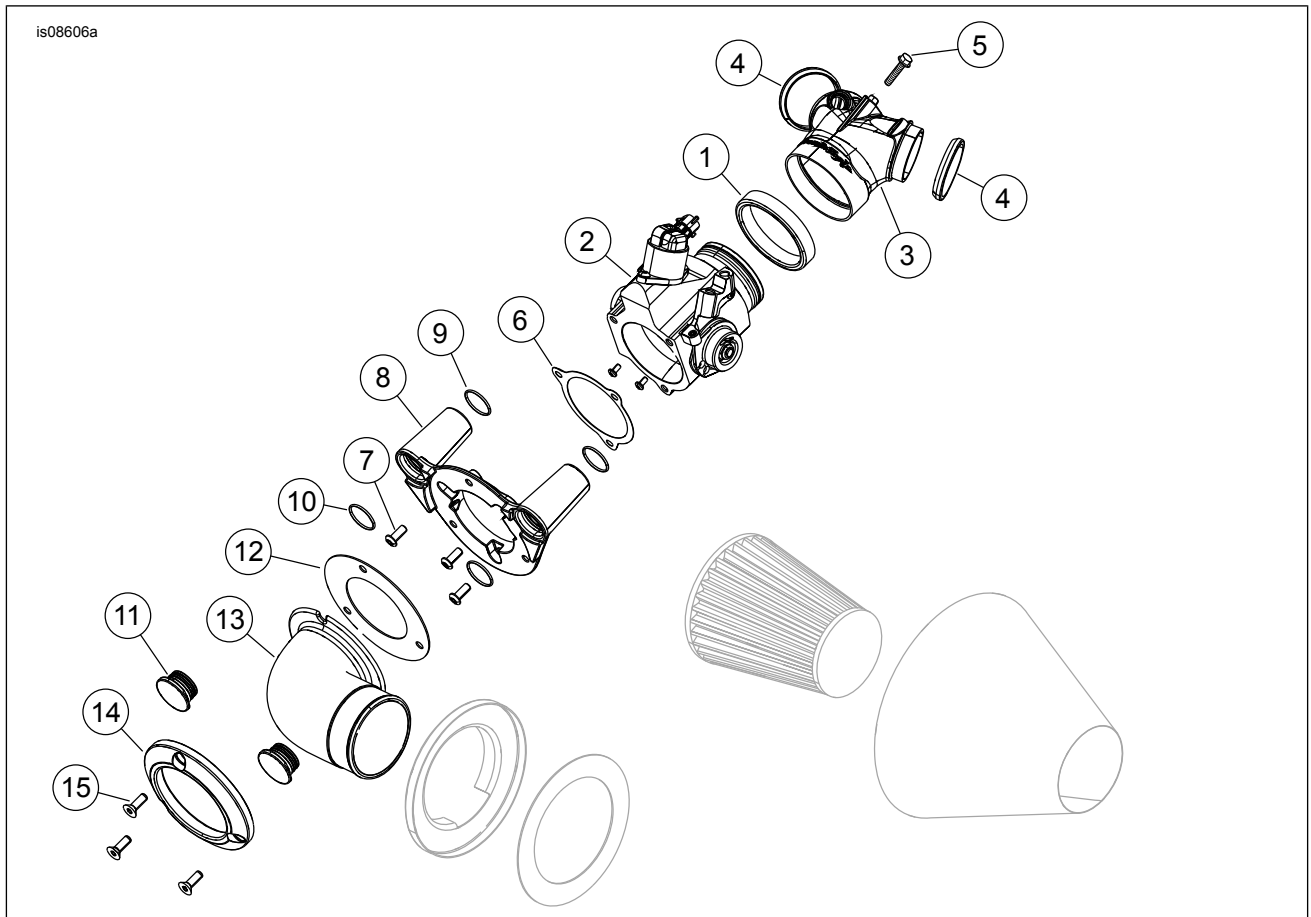
**NOTE**

*Cut back main harness sheathing 2.5–5 cm (1–2 in) to enable more slack and ease of connection*

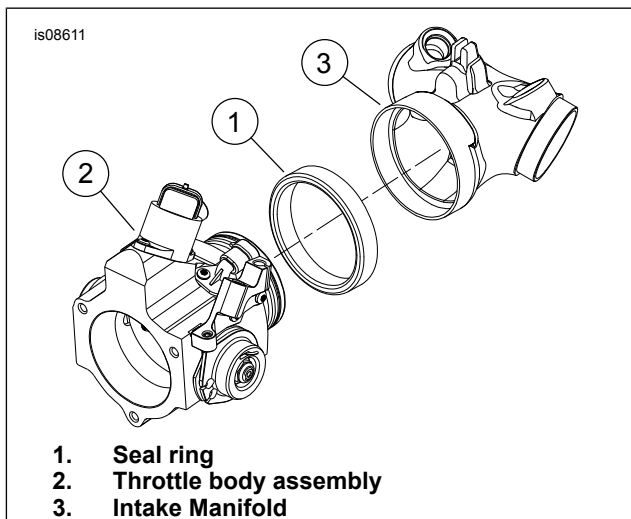
14. See the service manual. Install OE fuel line, fuel rail, injectors and bracket. Secure with new screw (5), part number 27216-95, provided. Tighten screw to 6.8 N·m (60 **in-lbs**).
15. Connect fuel injector harness leads and TPS, IAC motor and T-MAP sensor leads.

**16. California Only:**

- a. Remove pipe plug from throttle body. Plug is located between IAC motor and TPS sensor.
  - b. See Figure 3 . Apply pipe thread sealant to purge port fitting (6). Install purge port fitting and tighten securely.
  - c. Connect EVAP canister purge line to purge fitting.
  - d. Verify purge line has slack to not be kinked or pinched during operation. Fitting may be trimmed if necessary.
17. See the service manual. Install throttle cables and adjust per procedure.



**Figure 1. Induction System**



1. Seal ring
2. Throttle body assembly
3. Intake Manifold

**Figure 2. Intake Manifold, Seal Ring, Throttle Body Assembly**

## Final Assembly

1. See the service manual. Install main fuse.
2. See the service manual. Install fuel tank.

3. See the service manual. Install seat.

### ⚠ WARNING

After installing seat, pull upward on seat to be sure it is locked in position. While riding, a loose seat can shift causing loss of control, which could result in death or serious injury. (00070b)

### NOTICE

You must recalibrate the ECM when installing this kit. Failure to properly recalibrate the ECM can result in severe engine damage. (00399b)

4. Have a Harley-Davidson dealer download the new ECM calibration using Digital Technician™.
5. Run engine. Repeat several times to verify proper operation.

## Operation

Refer to BREAK-IN RIDING RULES in the owner's manual to break in the motorcycle.

## SERVICE PARTS

is08615

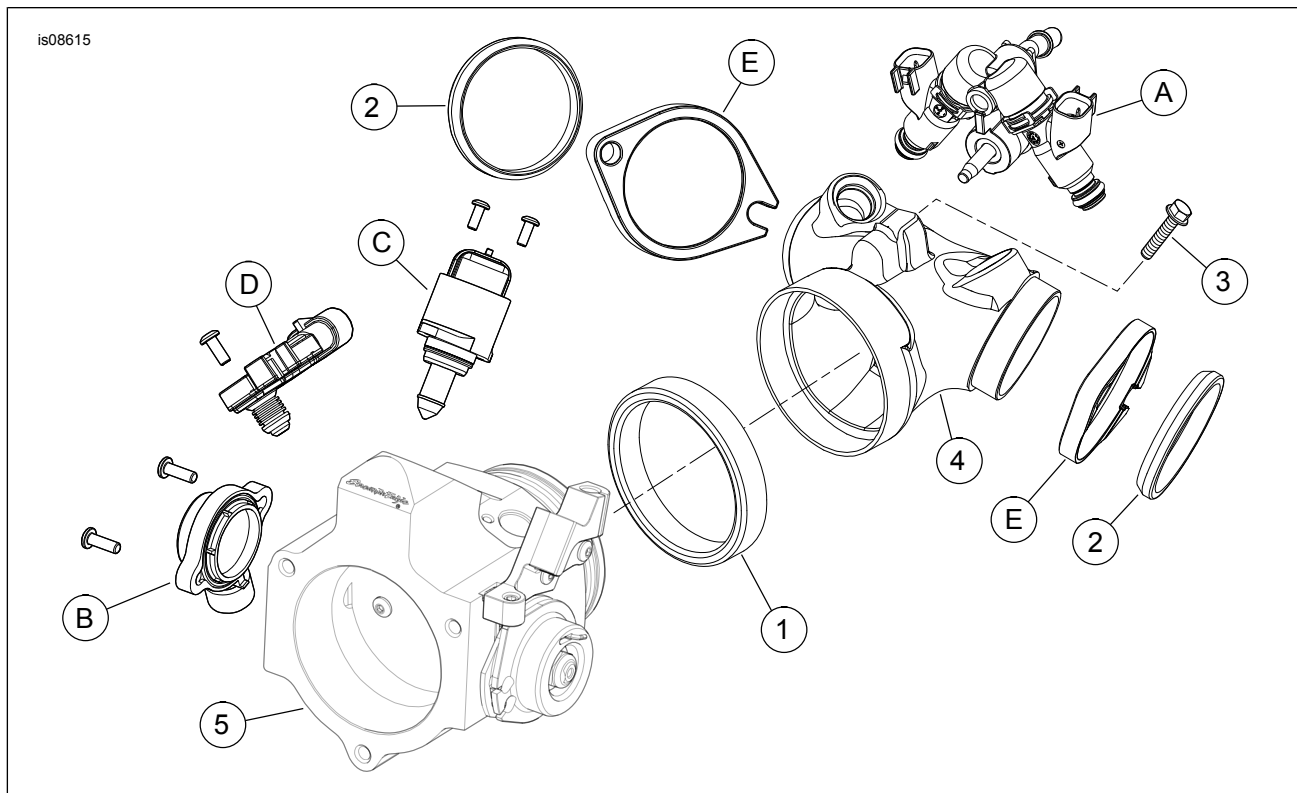


Figure 3. Service Parts: 58 mm EFI Throttle Body and Intake Manifold

Table 1. Service Parts Table

Item	Description (Quantity)	Part Number
1	Seal ring, 58mm	29911-07
2	Seal, intake manifold (2)	26995-86B
3	Screw	27216-95
4	Intake manifold	Not sold separately
5	58 mm throttle body assembly	Not sold separately
6	Purge port fitting	Not sold separately
<b>Items mentioned in text, but not included in kit:</b>		
A	Fuel injectors and fuel rail assembly	
B	Throttle position sensor (TPS) (Part no. 27629-01A)	
C	Idle air control motor (Part no. 27628-01A)	
D	T-MAP sensor (Part no. 32319-07A)	
E	Intake seal flange	