



INSTRUCTIONS

-J05504

2012-10-18

DOWNTUBE BAG

GENERAL

Kit Numbers

93300044, 93300045

Models

For model fitment information, see the P&A retail catalog or the Parts and Accessories section of www.harley-davidson.com (English only).

Installation Requirements

For Sportster models: Loctite® 243 Medium Strength Threadlocker and Sealant - Blue (Part No. 99642-97) is required for proper installation of this kit.

Kit Contents

See Figure 7 and Table 1.

INSTALLATION

Sportster Models Without Engine Guard

1. See Figure 1. Starting with a 5 mm (3/16 in) drill bit, drill four pilot holes (1 and 2) through the back of the downtube bag (3) at the locations specified. Drill indicators are located on the back of the plastic base. Take care not to damage the front face of the bag with the drill bit.

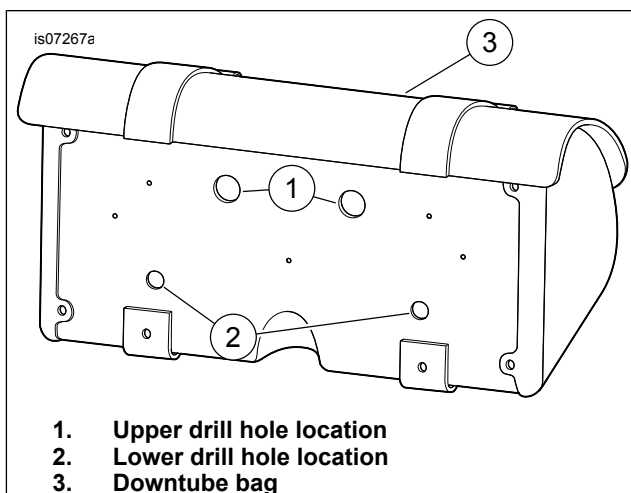


Figure 1. Drill Hole Location for XL Models

2. Enlarge the upper pilot mounting holes using a 10.5 mm (13/32 in) diameter drill.
3. Enlarge the lower pilot mounting holes using a 7 mm (9/32 in) drill bit.

4. See Figure 2. Place one mounting bracket (2) against the back of the downtube bag (3). Align the holes in the mounting bracket with the holes in the bag. Insert two button head bolts (1) through lower mounting holes.
5. Place the other mounting bracket inside the bag and insert button head bolts through lower holes in bracket.
6. Install nuts (4) over button head bolts on the inside of the bag. Tighten nuts to 6.8 N·m (60 in-lbs).
7. From inside the bag, insert short hex head bolts (5) through the upper mounting holes.
8. Place a few drops of Loctite 243 - Blue onto the threads of each short hex head bolt.
9. Insert the short hex head bolts into the threaded holes on the lower frame crossmember.
10. Tighten short hex head bolts to 33.9–47.5 N·m (25–35 ft-lbs).

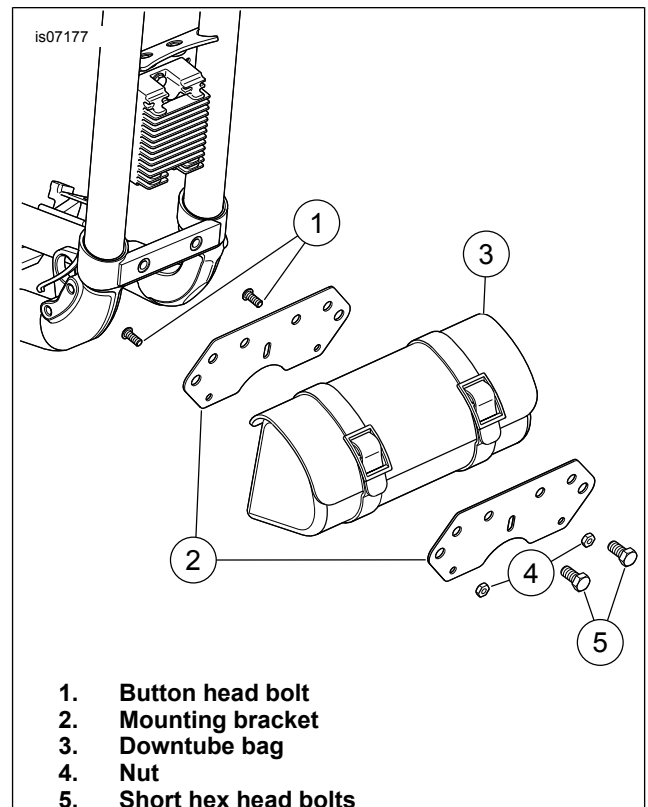


Figure 2. Downtube Bag Fitment, Sportster Models

Dyna Models Without Engine Guard

1. See Figure 3. Starting with a 5 mm (3/16 in) drill bit, drill five pilot holes (1, 2, and 3) through the back of the downtube bag (4) at the locations specified. Drill indicators are located on the back of the plastic base. Take care not to damage the front face of the bag with the drill bit.
2. Enlarge the two outer mounting holes (1) using a 10.5 mm (13/32 in) diameter drill. Enlarge the center mounting hole (2) and lower mounting holes (3) using a 7.25 mm (9/32 in) diameter drill.

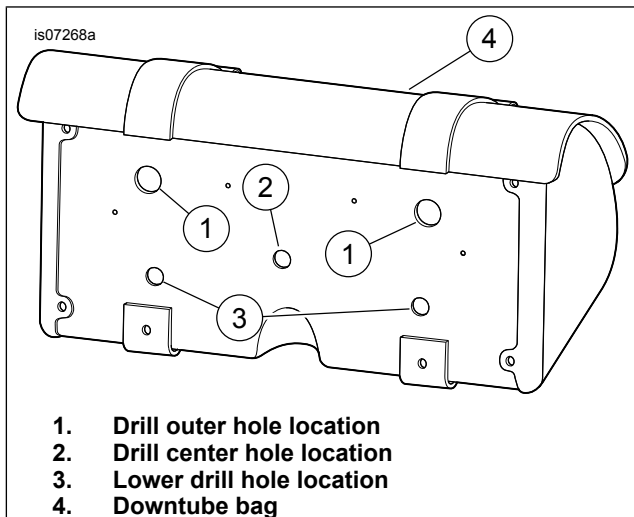


Figure 3. Drill Hole Locations for Dyna Models Without Engine Guard

3. See Figure 4. Place one mounting bracket (9) against the back of the downtube bag (10). Align the holes in the mounting bracket with the holes in the bag. Insert two button head bolts (8) through lower mounting holes.
4. Place the other mounting bracket inside the bag and insert button head bolts through lower holes in bracket.
5. Install nuts (12) over button head bolts on the inside of the bag. Tighten nuts to 6.8 N·m (60 in-lbs).
6. Remove the upper engine mount screw (7), lockwasher (6) and washer (2).
7. Wrap P-clamps (4) around frame downtubes with flat side facing out.
8. Place the bag assembly against the frame mounting bracket (1). Insert button head bolt (8) from inside the bag into threaded nut on the frame mounting bracket. Fasten bolt loosely.
9. Attach the frame mounting bracket to the upper engine mount location using the screw, lockwasher and washer removed earlier. Align the bracket vertically. Tighten screw to 33.9–43.4 N·m (25–32 ft-lbs).
10. Insert long hex head bolts (3) through P-clamps, spacers (5) and mounting brackets on bag.
11. From the inside of the bag, thread mounting bracket nuts (11) onto long hex head bolts. Tighten nuts to 16.3–21.7 N·m (12–16 ft-lbs).

12. Tighten button head bolt to 6.8–9 N·m (60–80 in-lbs).

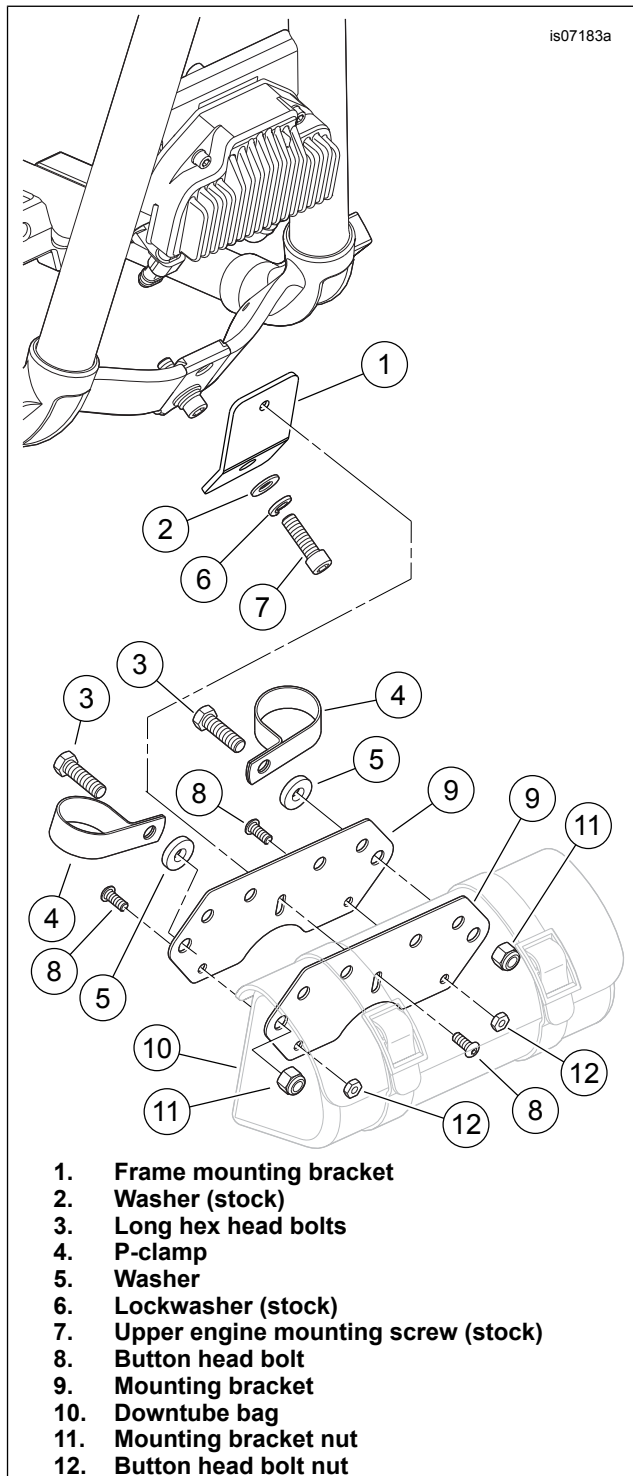


Figure 4. Dyna Models Without Engine Guard

Dyna Models With Engine Guard

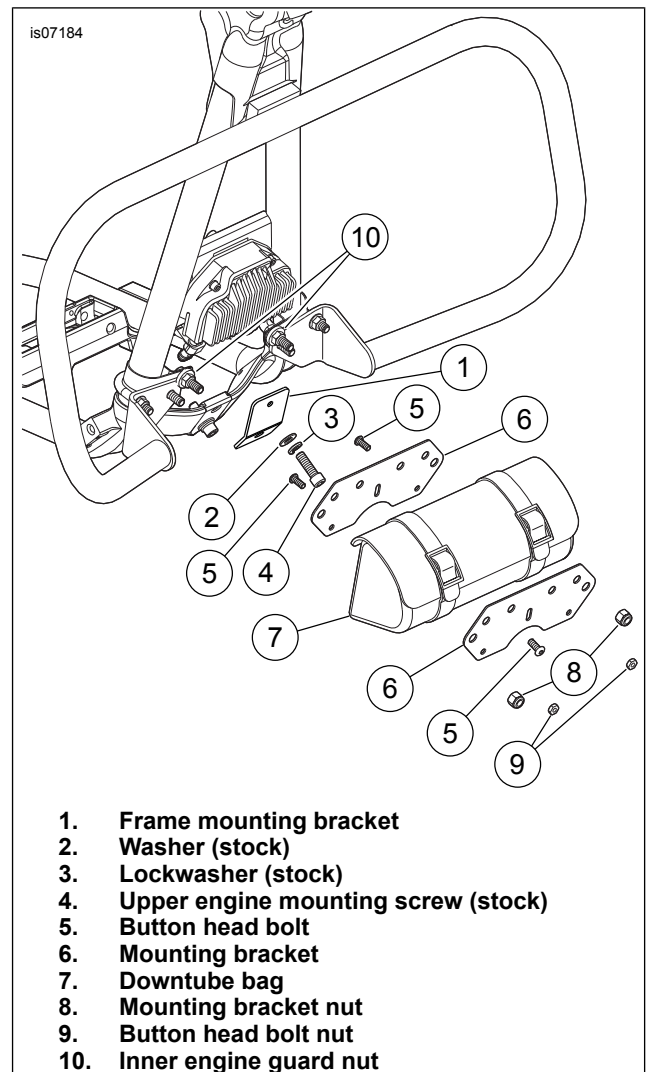
1. See Figure 5. Starting with a 5 mm (3/16 in) drill bit, drill five pilot holes (1, 2, and 3) through the back of the downtube bag (4) at the locations specified. Drill indicators are located on the back of the plastic base. Take care not to damage the front face of the bag with the drill bit.
2. Enlarge the two outer mounting holes (1) using a 10.5 mm (13/32 in) diameter drill. Enlarge the center mounting hole (2) and lower mounting holes (3) using a 7.25 mm (9/32 in) diameter drill.

3. See Figure 6. Place one mounting bracket (6) against the back of the downtube bag (7). Align the holes in the mounting bracket with the holes in the bag. Insert two button head bolts (5) through lower mounting holes.
4. Place the other mounting bracket inside the bag and insert button head bolts through lower holes in bracket.
5. Install nuts (9) over button head bolts on the inside of the bag. Tighten nuts to 6.8 N·m (60 in-lbs).
6. Remove the upper engine mount screw (4), lockwasher (3) and washer (2).
7. Place the bag assembly against the frame mounting bracket (1). Insert button head bolt (5) from inside the bag into threaded nut on the frame mounting bracket. Fasten bolt loosely.
8. Remove the two inner engine guard nuts (10).
9. Place bag assembly over the engine guard U-bolts.

NOTE

Tighten left and right side U-bolts evenly, so the same length of bolt protrudes from the end of nut.

10. Attach the frame mounting bracket to the upper engine mount location using the screw, lockwasher and washer removed earlier. Align the bracket vertically. Tighten screw to 33.9–43.4 N·m (25–32 ft-lbs).
11. From the inside of the bag, thread engine guard nuts onto bolts. Tighten nuts to 33.9 N·m (25 ft-lbs).
12. Tighten button head bolt to 6.8–9 N·m (60–80 in-lbs).



1. **Frame mounting bracket**
2. **Washer (stock)**
3. **Lockwasher (stock)**
4. **Upper engine mounting screw (stock)**
5. **Button head bolt**
6. **Mounting bracket**
7. **Downtube bag**
8. **Mounting bracket nut**
9. **Button head bolt nut**
10. **Inner engine guard nut**

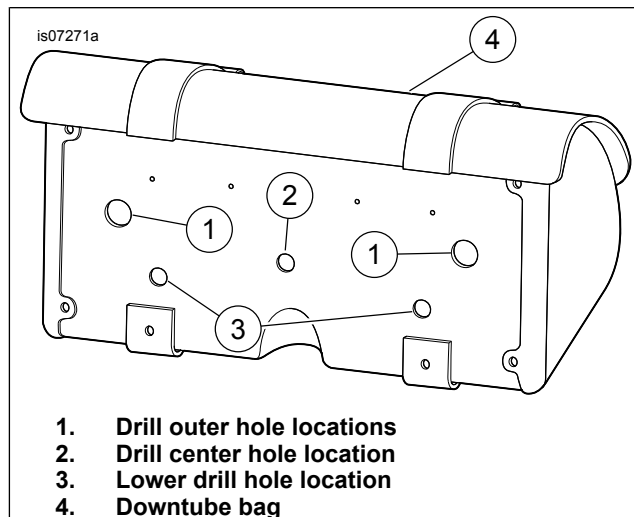
Figure 6. Dyna Models With Engine Guard

IN USE

NOTE

Maximum downtube bag weight capacity is 2.3 kg (5 lb).

Use the Leather Care from the kit regularly to preserve the appearance and extend the life of the downtube bag. Additional leather care products are available from a Harley-Davidson dealer.



1. **Drill outer hole locations**
2. **Drill center hole location**
3. **Lower drill hole location**
4. **Downtube bag**

Figure 5. Drill Hole Location for Dyna Models With Engine Guard

SERVICE PARTS

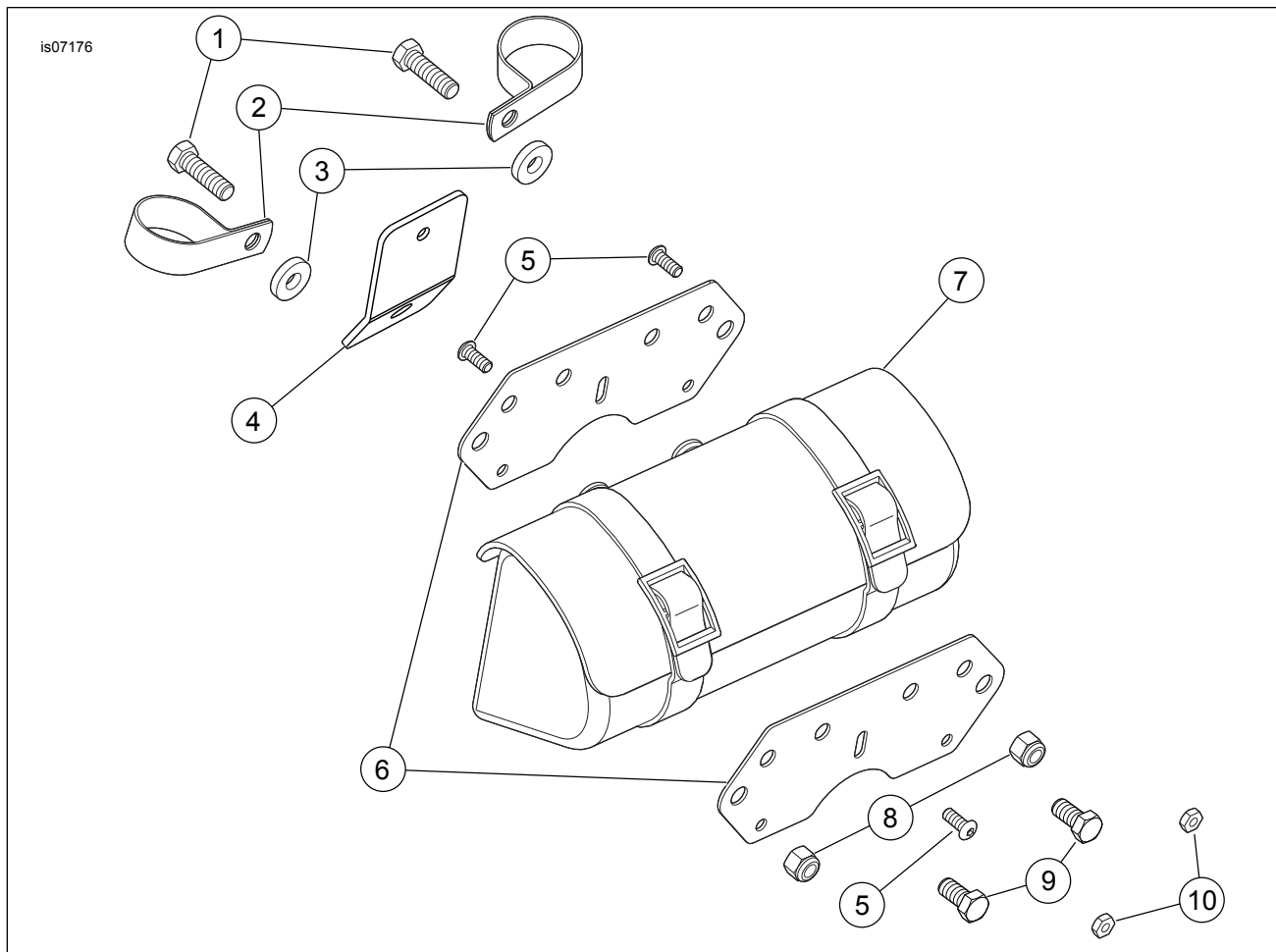


Figure 7. Service Parts, Downtube Bag

Table 1. Service Parts

Item	Description (Quantity)	Part Number
1	Hex head bolt, 3/8-16 x 31.8 mm (1¼ in) long (2)	4716W
2	P-clamp (2)	90200759
3	Washer, thick (2)	6019
4	Frame mounting bracket	Not sold separately
5	Button head bolt, 1/4-20 x 15.9 mm (5/8 in) long (3)	924
6	Mounting bracket (2)	Not sold separately
7	Downtube bag	Not sold separately
8	Nut (2)	7778
9	Hex head bolt, 3/8-16 x 19 mm (¾ in) long (2)	4713W
10	Nut (2)	7792
11	Leather care kit (not shown)	Not sold separately