



INSTRUCTIONS

-J05187

2016-08-22

SCREAMIN' EAGLE XL 883 TO 1200 CONVERSION KIT

GENERAL

Kit Number

29836-10A

Models

For model fitment information, see the P&A Retail Catalog or the Parts and Accessories section of www.harley-davidson.com (English only).

Additional Parts Required

See the appropriate sections of the service manual for special tools required to install this kit.

This kit requires a performance air cleaner kit. Refer to the Screamin' Eagle catalog or the P&A retail catalog.

Proper installation of this kit requires ECM recalibration. Contact a Harley-Davidson dealer for details.

▲ WARNING

Rider and passenger safety depend upon the correct installation of this kit. Use the appropriate service manual procedures. If the procedure is not within your capabilities or you do not have the correct tools, have a Harley-Davidson dealer perform the installation. Improper installation of this kit could result in death or serious injury. (00333b)

NOTE

This instruction sheet references service manual information. A service manual for your model motorcycle is required for this installation and is available from a Harley-Davidson dealer.

Kit Contents

See Figure 1 to Figure 3 and Table 1 to Table 3.

NOTE

This kit is intended for racing applications only.

Engine related performance parts are intended for the experienced rider only.

REMOVAL

▲ WARNING

When servicing the fuel system, do not smoke or allow open flame or sparks in the vicinity. Gasoline is extremely flammable and highly explosive, which could result in death or serious injury. (00330a)

1. Remove left side cover and the main fuse. Refer to MAIN FUSE REMOVAL in service manual.
2. Remove air cleaner assembly. Refer to AIR CLEANER REMOVAL in service manual.
3. Remove cylinder heads, cylinders, and pistons. Refer to appropriate ENGINE sections in service manual.
4. Remove clutch components. Refer to DRIVE/TRANSMISSION section in service manual.
5. Remove cam gears. Refer to appropriate ENGINE sections in service manual.

INSTALLATION

Install Engine and Clutch Components

NOTE

The 1200 cc pistons have an arrow on the top of the piston. This arrow must face the front of the engine when piston is installed. There is no front cylinder piston or rear cylinder piston. New pistons can be installed in either cylinder.

Check piston rings for proper side clearance and end gap. Be sure end gaps of adjacent rings are installed 90 degrees apart.

1. Install cam gears from kit. Refer to appropriate ENGINE sections in service manual.
2. Install cylinders, and pistons from kit. Refer to appropriate ENGINE sections in service manual.
3. Install cylinder heads previously removed. Refer to appropriate ENGINE sections in service manual.
4. Install clutch components. Replace original gaskets, O-rings, and seals with new components from kit. Refer to DRIVE/TRANSMISSION section in service manual.
5. Install air cleaner assembly.

Recalibrate ECM

NOTICE

You must recalibrate the ECM when installing this kit. Failure to properly recalibrate the ECM can result in severe engine damage. (00399b)

Proper installation of this kit requires ECM recalibration. Contact a Harley-Davidson dealer for details.

Return to Service

1. Install the main fuse and left side cover.

SERVICE PARTS

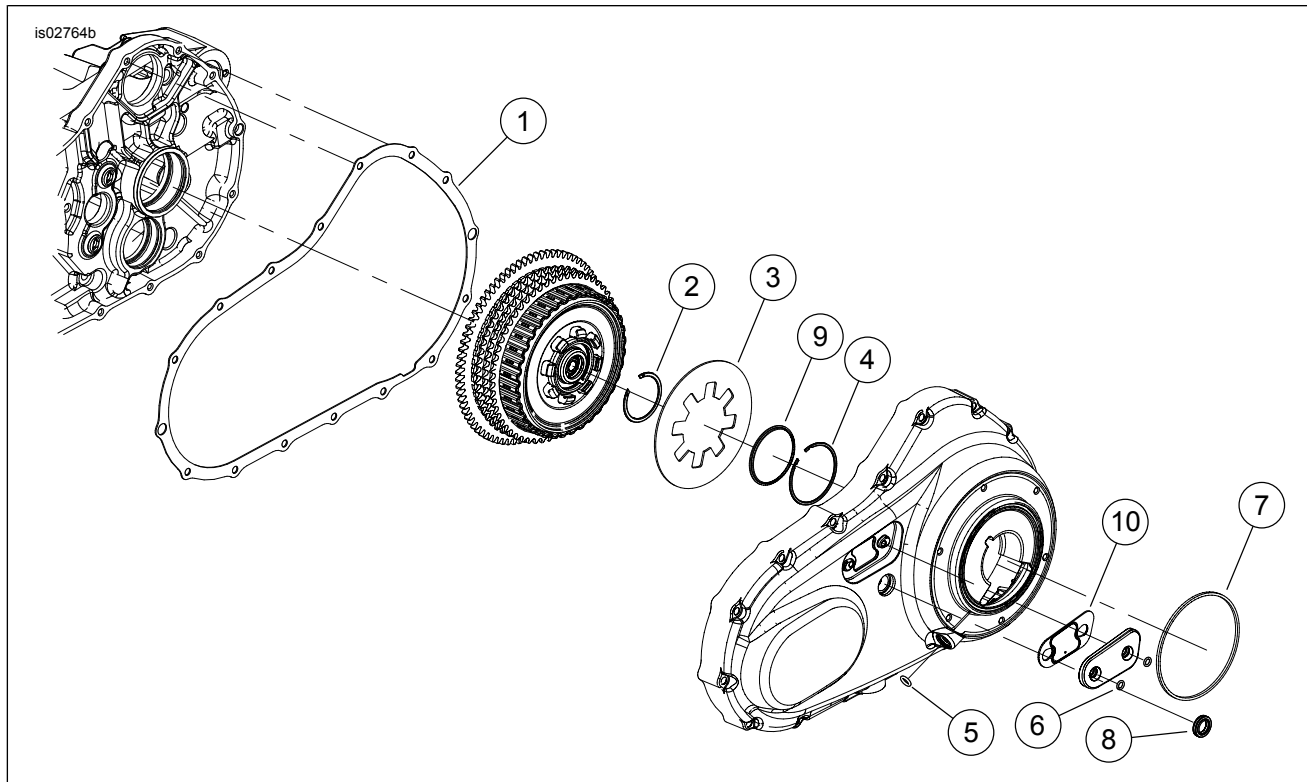


Figure 1. Service Parts: Screamin' Eagle XL 833 to 1200 Conversion Kit

Table 1. Service Parts: Screamin' Eagle XL 833 to 1200 Conversion Kit

| Item | Description (Quantity) | Part Number | Item | Description (Quantity) | Part Number |
|------|------------------------------|-------------|------|---------------------------------|-------------|
| 1 | Gasket, primary cover | 34955-04 | 6 | O-ring (2) | 11171 |
| 2 | Retaining ring, clutch plate | 37909-90 | 7 | Gasket, clutch inspection cover | 25463-94A |
| 3 | Spring, clutch plate | 37924-04A | 8 | Seal, oil | 37107-06 |
| 4 | Retaining ring | 37908-90 | 9 | Clutch retaining ring | 37872-90 |
| 5 | O-ring, clutch cable | 11179 | 10 | Gasket, chain inspection | 34990-08 |

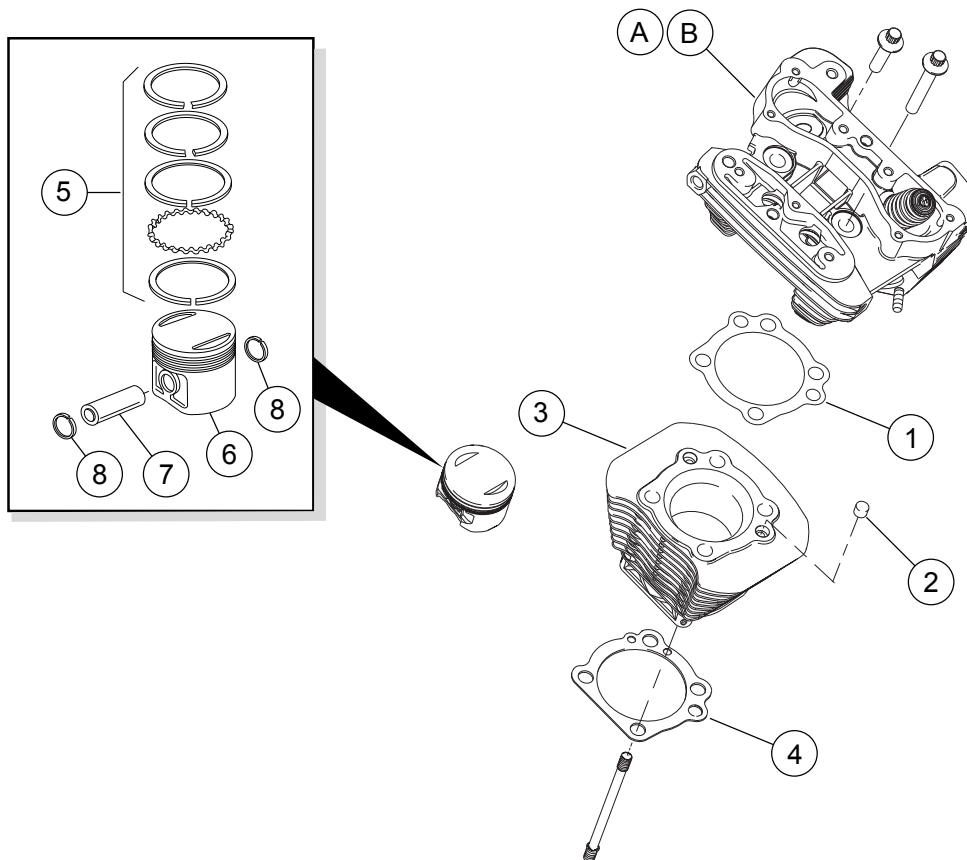


Figure 2. Service Parts: Screamin' Eagle XL 833 to 1200 Conversion Kit

Table 2. Service Parts: Screamin' Eagle XL 833 to 1200 Conversion Kit

| Item | Description (Quantity) | Part Number |
|--|--|---------------------|
| 1 | Gasket, cylinder head (2) | 16770-84F |
| 2 | Dowel (4) | 16573-83A |
| 3 | Cylinder, std., black, non-highlighted (2) | Not Sold Separately |
| 4 | Gasket, cylinder base (2) | 16789-04 |
| 5 | Piston ring set, 1200 std. (2) | 21925-04 |
| 6 | Piston, 1200, std. (2) | 22691-01A |
| 7 | Piston pin (2) | 22481-04 |
| 8 | Retaining ring (4) | 22482-04 |
| 9 | Seal, exhaust (Not Shown) | 65324-83B |
| Items mentioned in text, but not included in kit: | | |
| A | Cylinder head, front | |
| B | Cylinder head, rear | |

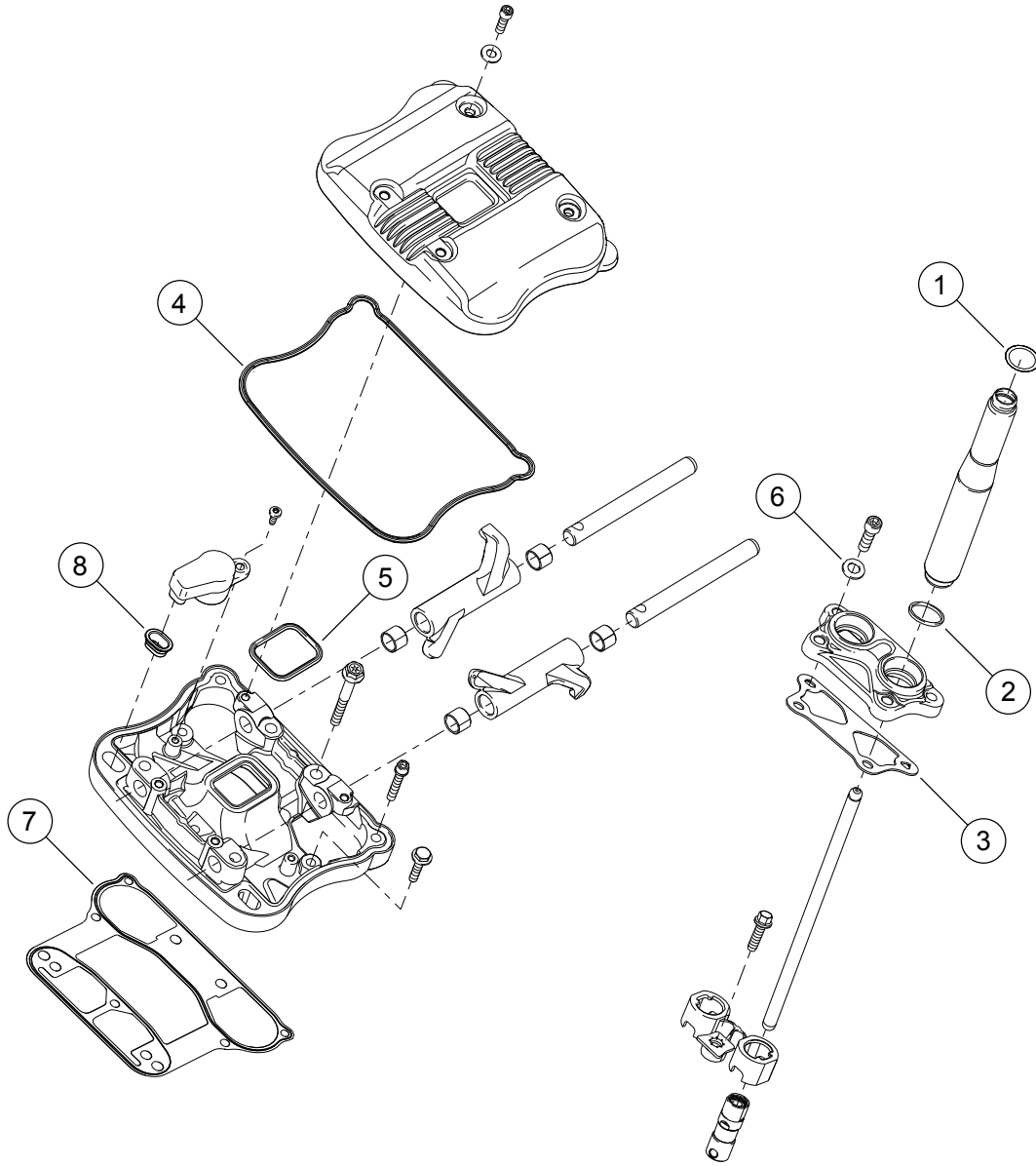


Figure 3. Service Parts: Screamin' Eagle XL 833 to 1200 Conversion Kit

Table 3. Service Parts: Screamin' Eagle XL 833 to 1200 Conversion Kit

| Item | Description (Quantity) | Part Number | Item | Description (Quantity) | Part Number |
|------|----------------------------------|-------------|------|---------------------------------|-------------|
| 1 | O-ring, upper push rod cover (4) | 11190 | 5 | Gasket, rocker cover, inner (2) | 17695-07A |
| 2 | O-ring, tappet cover (4) | 11377 | 6 | Seal washer, tappet cover (8) | 6589 |
| 3 | Gasket, tappet cover (2) | 17976-04 | 7 | Gasket, rocker box (2) | 16800-84A |
| 4 | Gasket, rocker cover, lower (2) | 17362-07A | 8 | Gasket, seal breather (2) | 17393-07 |

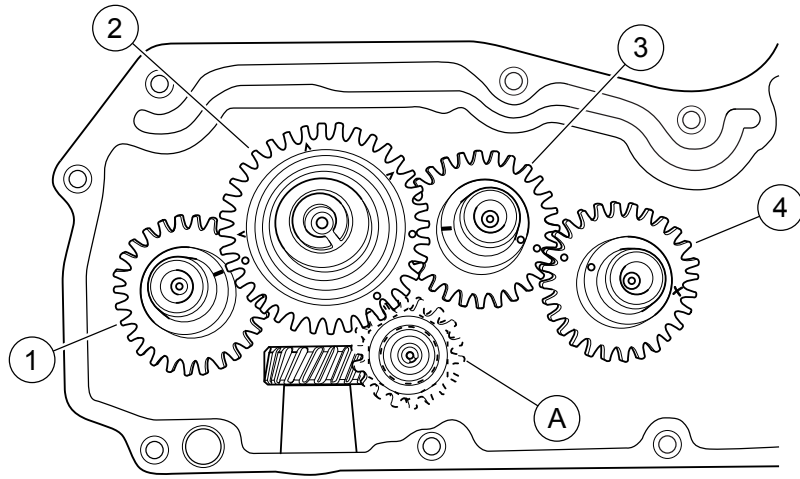


Figure 4. Service Parts: Screamin' Eagle XL 833 to 1200 Conversion Kit

Table 4. Service Parts: Screamin' Eagle XL 833 to 1200 Conversion Kit

| Item | Description (Quantity) | Part Number |
|--|---------------------------------|-------------|
| 1 | Rear exhaust cam gear | 25198-04 |
| 2 | Rear intake cam gear | 25200-04 |
| 3 | Front intake cam gear | 25682-04 |
| 4 | Front exhaust cam gear | 25681-04 |
| Items mentioned in text, but not included in kit: | | |
| A | Pinion gear, for reference only | |