



INSTRUCTIONS

-J04302

2007-01-16

BLACK XL FOOT LEVERS

GENERAL

Kit Number

42930-07

Models

For model fitment information, please see the P&A Retail Catalog or the Parts and Accessories section of www.harley-davidson.com (English only).

Additional Parts Required

Loctite[®] 243 Threadlocker and Sealant - Blue (P/N 99642-97)

▲ WARNING

Rider and passenger safety depend upon the correct installation of this kit. Use the appropriate service manual procedures. If the procedure is not within your capabilities or you do not have the correct tools, have a Harley-Davidson dealer perform the installation. Improper installation of this kit could result in death or serious injury. (00333b)

NOTE

This instruction sheet references Service Manual information. A Service Manual for your model motorcycle is required for this installation and is available from a Harley-Davidson Dealer.

Kit Contents

See Figure 2 and Table 1.

RIGHT FOOTREST AND BRAKE PEDAL

REMOVAL

1. Refer to the appropriate Service Manual to remove the front exhaust muffler.
2. See Figure 1. Remove retaining ring (3), clevis pin (5), footrest (1) and spring washer (2). Save retaining ring for reuse.
3. Unscrew brake rod (6) from brake pedal (7) and master cylinder bell crank (10).
4. Remove the two socket head screws (17) from the footrest/brake pedal support bracket (16) and remove assembly from motorcycle.
5. Remove retaining ring (9), screw (8) and clevis (4). Slide brake pedal (7) off clevis. Discard retaining ring.

INSTALLATION

1. See Figure 1. Slide clevis (4) into brake pedal (7). Mount clevis on right rider footrest/brake pedal support bracket. Line up hole in clevis with hole in support bracket. Secure with screw (8). Tighten screw to 10.8–17.6 N·m (96–156 in-lbs).
2. Install new retaining ring (9) on end of clevis.
3. Install footrest/brake pedal support bracket (16) to frame using socket head screws (17) and tighten to 61.1–67.9 N·m (45–50 ft-lbs).
4. Install footrest (1) on clevis with spring washer (2). Make sure spring washer is positioned inside clevis with the square edge toward the inside. Align holes and push clevis pin (5) from top down through hole in clevis. Secure with retaining ring (3) saved in Step 1.
5. Apply two drops of Loctite 243 to threads of both brake rod ball stud screws.
6. Thread one end of brake rod (6) into master cylinder bell crank (10). Tighten to 13.6–20.4 N·m (120–180 in-lbs).
7. Thread the other end of brake rod into brake pedal. Tighten to 10.9–16.3 N·m (96–144 in-lbs).

SHIFT LEVER

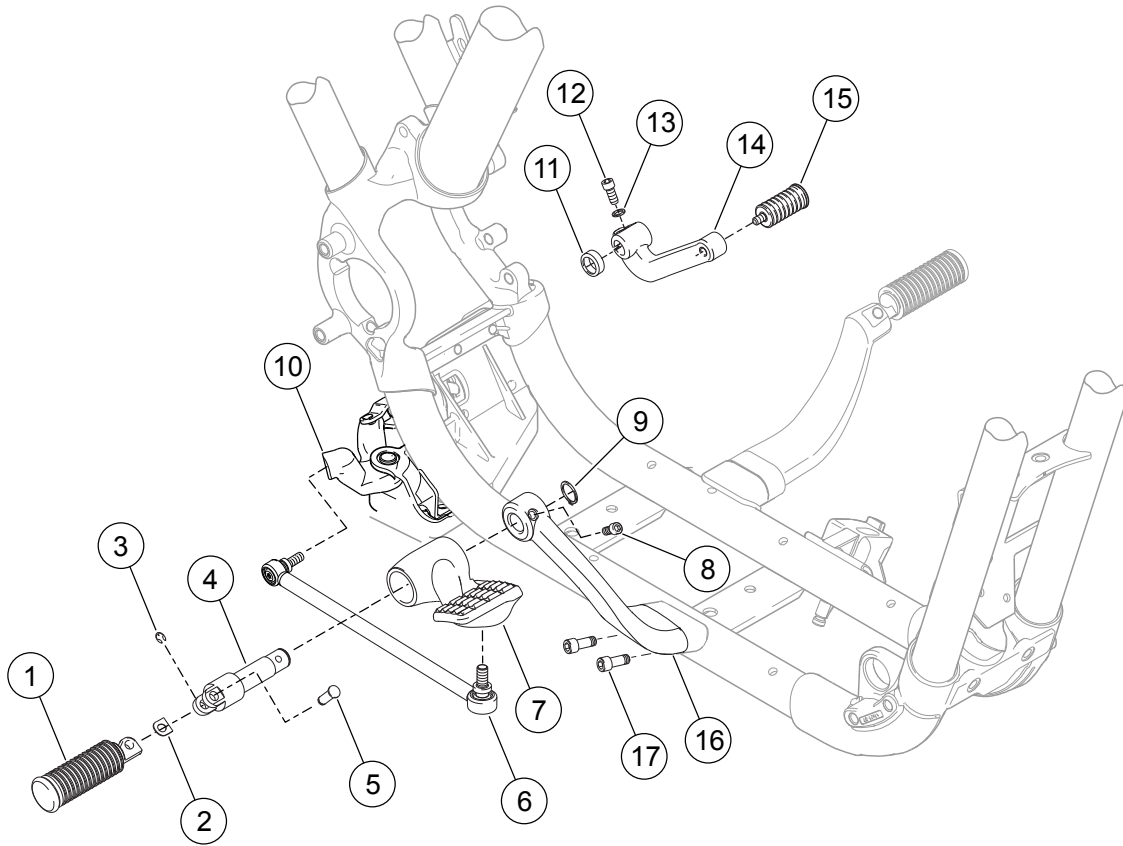
REMOVAL

1. See Figure 1. Remove pinch screw (12). Remove shift lever assembly (14) and rubber washer (11).
2. Remove shifter peg (15) from shift lever and save for installation on new shift lever.

INSTALLATION

1. See Figure 1. Install rubber washer (11) and shift lever (14) on transmission shift lever shaft. Secure with washer (13) and pinch screw (12). Tighten screw to 21.7–27.1 N·m (16–20 ft-lbs).
2. Place a few drops of Loctite 243 onto screw threads of shifter peg and install to shift lever. Tighten shifter peg screw securely.





- | | |
|----------------------------|--|
| 1. Footrest | 10. Bell Crank |
| 2. Spring Washer | 11. Rubber Washer |
| 3. Retaining Ring | 12. Pinch Screw |
| 4. Footrest Clevis | 13. Washer |
| 5. Clevis Pin | 14. Shift Lever |
| 6. Rear Brake Rod Assembly | 15. Shifter Peg |
| 7. Rear Brake Pedal | 16. Footrest/Brake Pedal Support Bracket |
| 8. Screw | 17. Socket Head Screw |
| 9. Retaining Ring | |

Figure 1. Brake Pedal and Shift Lever Assemblies

SERVICE PARTS

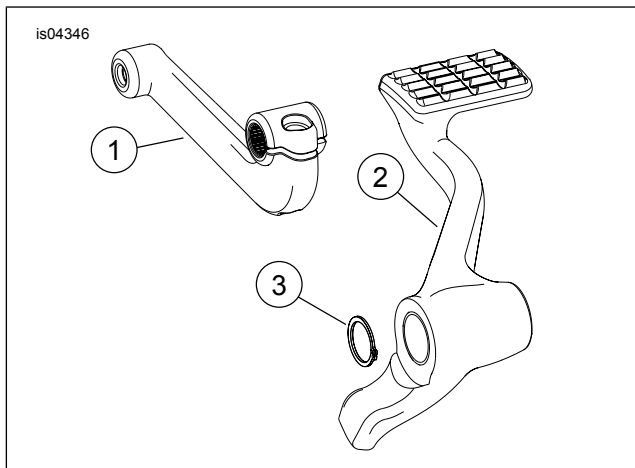


Figure 2. Service Parts: XL Brake Pedal and Shift Lever

Table 1. Service Parts

Item	Description (Quantity)	Part Number
1	Shifter lever, black	34721-07
2	Brake pedal assembly, black	42341-07
3	Retaining ring	11390