



INSTRUCTIONS

-J04216

2007-04-20

XL PREMIUM OIL COOLER KIT

GENERAL

Kit Number

62996-07

Models

For model fitment information, please see the P&A Retail Catalog or the Parts and Accessories section of www.harley-davidson.com (English only).

Additional Parts Required

Hylomar[®] Gasket and Thread Sealant

Oil Filter Wrench (H-D-42311) or (H-D-44067-A)

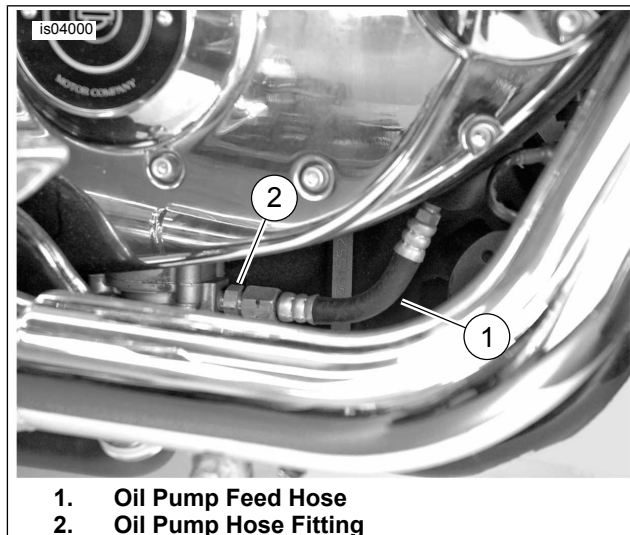
▲ WARNING

Rider and passenger safety depend upon the correct installation of this kit. If the procedure is not within your capabilities or you do not have the correct tools, have a Harley-Davidson dealer perform the installation. Improper installation of this kit could result in death or serious injury. (00308b)

Kit Contents

See Figure 4 and Table 1.

REMOVE



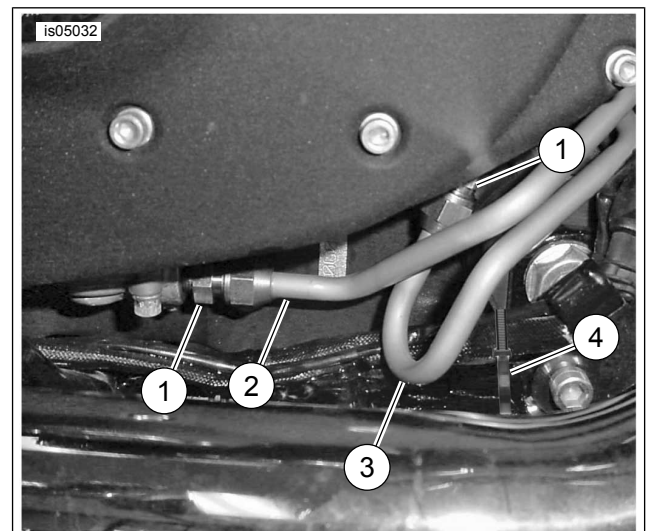
1. Oil Pump Feed Hose
2. Oil Pump Hose Fitting

Figure 1. Oil Pump Feed Hose

1. Refer to Owners Manual to drain engine oil and remove oil filter.
2. See Figure 1. Remove oil feed hose (1) from oil pump.
3. Remove oil feed hose fitting from engine crankcase. Discard oil feed hose.

INSTALLATION

1. See Figure 2 and Table 1. Apply Hylomar Gasket and Thread Sealant to threads of fitting (1) and install fitting to oil pump.
2. Apply Hylomar Gasket and Thread Sealant to threads of fitting (1) and install fitting to crankcase.
3. Tighten fittings to 6.2–7.4 N·m (55–65 in-lbs).



1. Fitting
2. Oil Hose Cooler Supply
3. Oil Hose Cooler Return
4. Cable Strap

Figure 2. Oil Hose Cooler Return and Supply Assemblies

4. Loosely install oil cooler return hose assembly (3) to crankcase fitting.
5. Loosely install oil cooler supply hose assembly (2) to oil pump fitting.
6. See Figure 3 for proper oil hose routing. The oil supply hose (1) should be the upper hose and the oil return hose (2) the lower hose.



1. Oil Supply Hose
2. Oil Return Hose

Figure 3. Oil Cooler Hose Routing

7. Remove two existing clips holding the clutch cable and wire harness from the left frame downtube.
8. See Figure 4 and Table 1. Position oil cooler clamps (7) in approximately the same position as the clips that were removed from the frame downtube.
9. Loosely attach oil cooler (4) to the clamps (7) using screws (9) and nuts (8).
10. Attach oil return hose (3) to the outboard connection of oil cooler (4) with worm clamp (5).
11. Attach oil feed hose (2) to the inboard connection of oil cooler (4) with worm clamp (5).
12. Tighten worm clamps to 0.9 N·m (8 **in-lbs**).
13. Adjust oil cooler as necessary to have it facing forward. Adjust oil cooler height if necessary so there is no tension on the oil cooler hoses.
14. Tighten oil cooler clamp screws to 3.4–3.6 N·m (30–32 **in-lbs**).
15. Insert clutch cable and wiring harness into the clips of the oil cooler clamps.
16. See Figure 2. Disconnect oil cooler supply hose assembly (2) from oil pump fitting (1).
17. Tighten oil cooler return hose assembly (3) to crankcase fitting to 24.4–27.1 N·m (18–20 ft-lbs). Be sure to hold the tube so that it does not move while tightening.
18. Reinstall oil cooler supply hose assembly (2) to oil pump fitting. Tighten nut to 24.4–27.1 N·m (18–20 ft-lbs). Be sure to hold the tube so that it does not move while tightening.
19. See Figure 4 and Table 1. Install oil line clips (6) to the metal tubing of the oil cooler feed and supply lines.
20. See Figure 2. Install cable tie (4) around frame and wire harness in area shown. Tighten cable tie so all wires are pulled toward the outside of the frame rail.
21. Refer to the owners manual for installing oil and oil filter.

SYSTEM FLOW TEST

NOTICE

Do not operate the engine when the oil level is below the add mark on the dipstick at operating temperature. Engine damage will result. (00187b)

1. Start engine. examine all hose connections for leaks. If there is no leakage, allow engine to warm up.
2. Verify that temperature of oil cooler increases when engine reaches normal operating temperatures. If the oil cooler remains cool after engine has warmed up, there may be an oil obstruction. Turn off engine and check system for source of obstruction.
3. After engine has cooled, re-tighten all fittings and clamps to the required torque specifications.
4. Fill oil to "Full" level on dipstick if necessary.

SERVICE PARTS

is04011

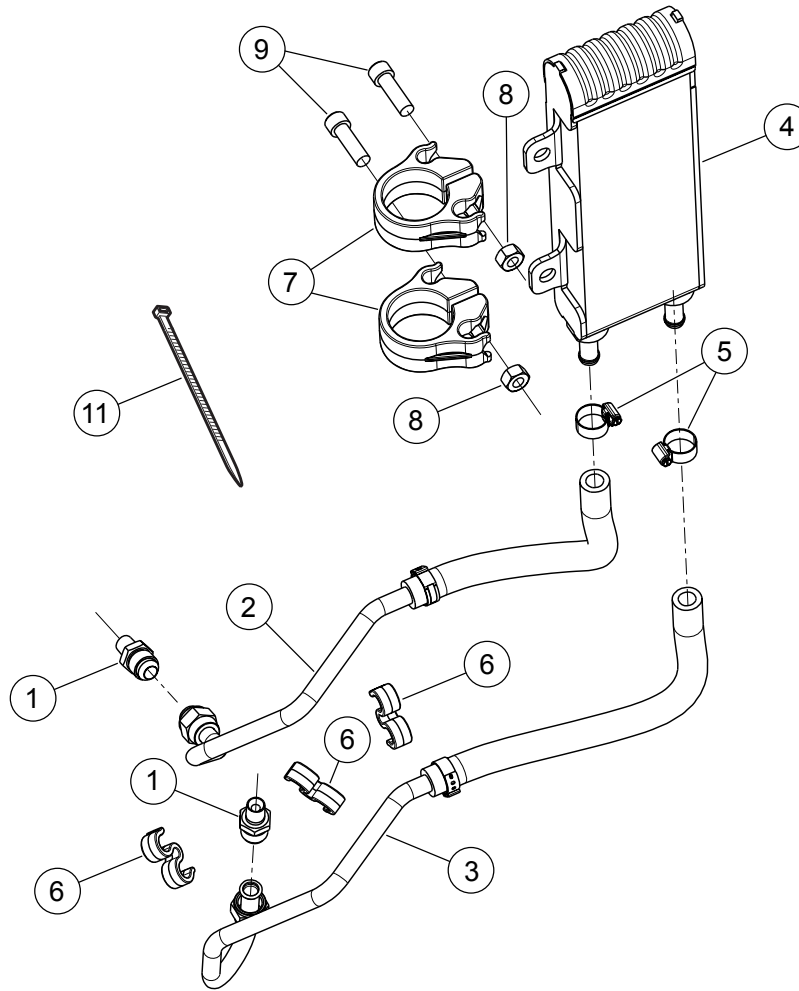


Figure 4. XL Premium Oil Cooler Kit

Table 1. Service Parts Table

Item	Description (Quantity)	Part Number
1	Fitting (2)	63091-07
2	Hose, oil cooler supply	Not Sold Separately
3	Hose, oil cooler return	Not Sold Separately
4	Cooler, oil	63094-07
5	Clamp, worm drive #4 (2)	9823
6	Clip, oil line (3)	10314
7	Clamp, oil cooler (2)	63095-07
8	Nut, hex (2)	7748W
9	Screw, cap, hex socket head (2)	3094
10	Kit, service. oil lines (Not shown)	63096-07
11	Cable tie	Not Sold Separately