



INSTRUCTIONS

-J04177

2006-11-03

MOUNTING KIT FOR INTERNATIONAL MINI-BULLET STYLE LED TURN SIGNALS

GENERAL

Kit Number

69590-07

Models

For model fitment information, please see the P&A Retail Catalog or the Parts and Accessories section of www.harley-davidson.com (English only).

Additional Parts Required

Proper installation of this kit requires the use of Loctite® 243 Threadlocker and Sealant - Blue (99642-97).

▲ WARNING

Rider and passenger safety depend upon the correct installation of this kit. Use the appropriate service manual procedures. If the procedure is not within your capabilities or you do not have the correct tools, have a Harley-Davidson dealer perform the installation. Improper installation of this kit could result in death or serious injury. (00333b)

NOTE

This instruction sheet references Service Manual information. A Service Manual for your model motorcycle is required for this installation and is available from a Harley-Davidson Dealer.

Kit Contents

See Figure 8 and Table 1.

REMOVAL

NOTE

Refer to the appropriate Service Manual for specific information on the following generalized steps.

1. Remove seat.

▲ WARNING

To prevent accidental vehicle start-up, which could cause death or serious injury, disconnect negative (-) battery cable before proceeding. (00048a)

2. Remove left side battery cover, disconnect battery cables, negative (-) cable first, then remove battery.

▲ WARNING

To prevent spray of fuel, purge system of high-pressure fuel before supply line is disconnected. Gasoline is extremely flammable and highly explosive, which could result in death or serious injury. (00275a)

3. Remove fuel tank.
4. Disconnect front turn signal connector [31B] from main harness connector [31A]. Note front turn signal wire routing and remove front turn signals.
5. Remove and disconnect the TSM/TSSM from the main harness connector [30B].
6. Disconnect the hands free antenna [208B], if installed.
7. Remove two hex nuts and move the Ignition Control Module aside, then disconnect rear lighting harness connector [7B] from main harness connector [7A].
8. Note rear turn signal wiring routing and disconnect right [18B] and left [19B] rear turn signal connectors from inside the tail lamp, then remove rear turn signals.

INSTALLATION

Install Control Module and Harnesses

1. See Figure 1. Route the Control Module harness (Figure 8, Item 8) as shown. Start from where the 8-place Control Module connector will be located (4).
 - a. Route the 3-place connector (1) under the seat post of the frame towards the rear of the motorcycle near the position of the TSM/TSSM connection.
 - b. Route the 2-place connector (2) up to the seat area near where the right rear corner of the battery is located.
 - c. Route the two 2-place front turn signal connectors (3) up along the seat post and then forward along the backbone of the frame to fuel tank mounting location.
 - d. Secure the harness to the motorcycle with cable straps from the kit as necessary.

NOTE

Fill the cavities of the connectors with dielectric grease (included in kit) prior to making connections.



- See Figure 2. Install Control Module (2) from Turn Signal Kit to the mounting bracket (1) from this kit using four screws (3) from kit. Tighten the screws to 5.6–6.8 N·m (50–60 in-lbs).
- Connect the Control Module harness 8-place connector to the Control Module.
- See Figure 3. Install the Control Module (1) to the frame seat post (2) as shown.

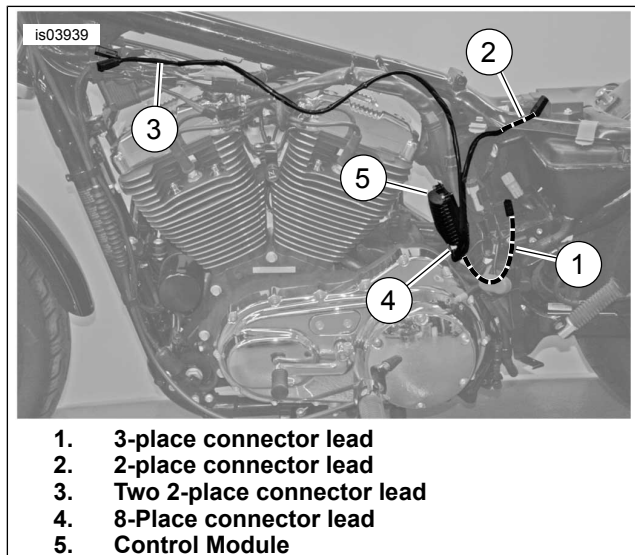


Figure 1. Control Module Harness Routing

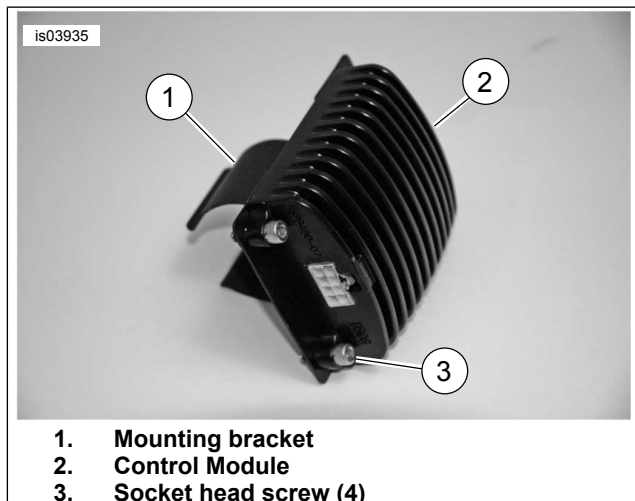


Figure 2. Install Control Module to Mounting Bracket

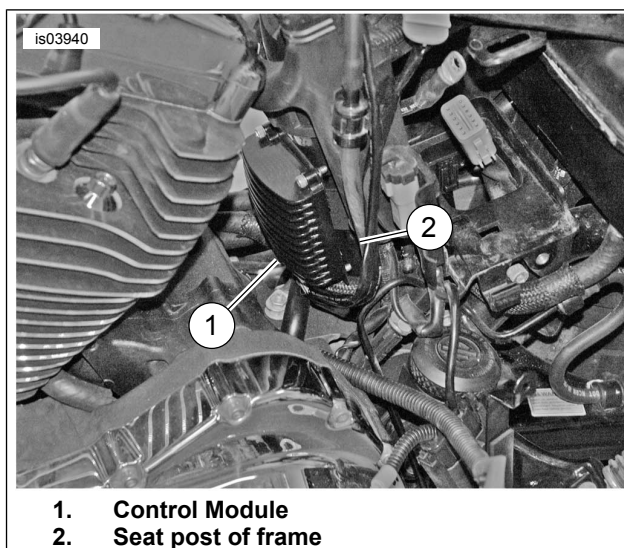


Figure 3. Install Control Module to Motorcycle Frame

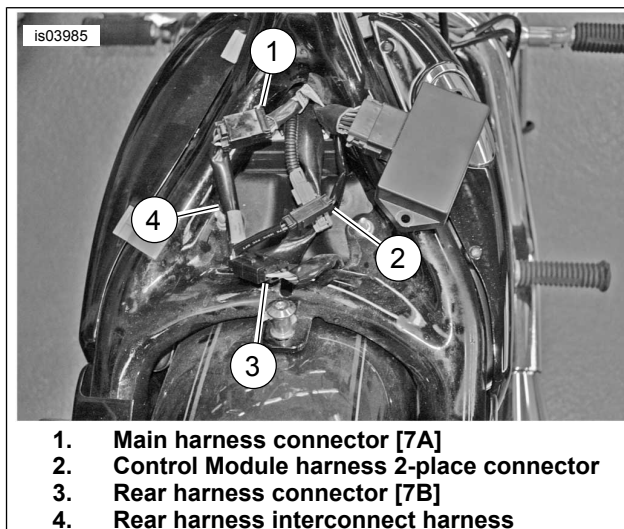
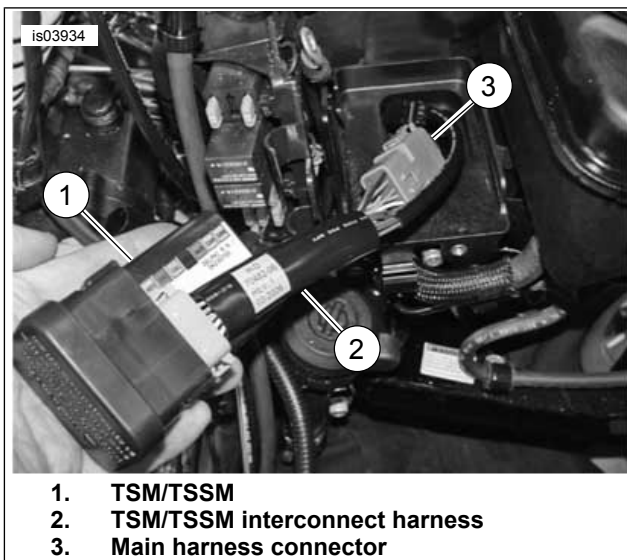


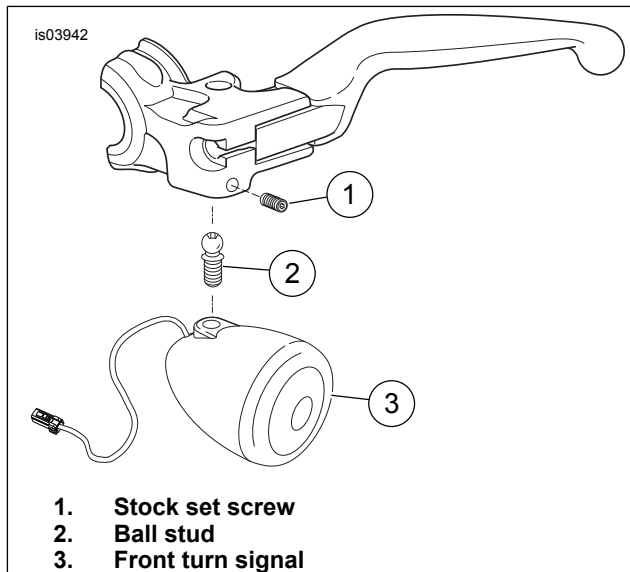
Figure 4. Install Rear Interconnect Harness

- See Figure 4. Connect the rear interconnect harness (Figure 8, Item 10), included in the kit, to the rear harness connector [7B] (3), main harness connector [7A] (1) and 2-place Control Module harness connector (2).
- See Figure 5. Connect TSM/TSSM interconnect harness (Figure 8, Item 9) to the main harness connector [30B] (3) and 3-place Control Module harness connector, then install the TSM/TSSM interconnect harness (2) male connector to the TSM/TSSM [30A] (1).
- Connect the antenna connector [208B] to the TSM/TSSM [208A], if installed.
- Slide all harness wiring and connectors into electrical caddy, and install the TSM/TSSM according to the Service Manual instructions. Use cable straps from the kit to secure the wire harnesses and connectors, as necessary.



1. TSM/TSSM
2. TSM/TSSM interconnect harness
3. Main harness connector

Figure 5. Install TSM/TSSM



1. Stock set screw
2. Ball stud
3. Front turn signal

Figure 6. Install Front Turn Signals

Install Front Turn Signals

1. See Figure 6. Apply a small amount of Loctite 243 (blue) to the threads of the ball stud (2). Install ball stud into the threaded hole of a front turn signal (3) from the mini-bullet style turn signal kit. Tighten the ball stud to 12–16 N·m (9–12 ft-lbs).
2. Install turn signal ball stud into the lever bracket, position the turn signal as desired and secure with stock set screw (1). Tighten set screw to 10.8–13.6 N·m (96–120 in-lbs).
3. Route the turn signal wires in the same manner as the stock turn signal wires and secure with four new wire harness retainers (Figure 8, Item 3) from the kit.

NOTE

Fill the cavities of the connectors with dielectric grease (included in kit) prior to making connections.

4. Repeat Steps 1-3 for the opposite side front turn signal.

5. Connect the turn signal connectors to the Control Module harness. Ensure that the left turn signal is connected to the connector with the violet and black wires, and that the right turn signal is connected to the connector with the brown and black wires.

Install Rear Turn Signals

1. Install the rear turn signal as follows:
 - a. See Figure 7. Route the turn signal wiring terminals (5) through the stalk (4) and into the rear fender in the same manner as the stock turn signal.
 - b. Install the rear turn signal (6) and turn signal stalk (4) to the rear fender strut cover (3) using the stock washer (2) and screw (1). Tighten the screw to 10.8–13.6 N·m (96–120 in-lbs).
2. Route the turn signal to the tail lamp assembly in the same manner as the stock turn signal wire.

NOTE

Fill the cavities of the connectors with dielectric grease (included in kit) prior to making connections.

3. Refer to Appendix B of the appropriate Service Manual and install the connectors, ensuring that the pins are properly located.

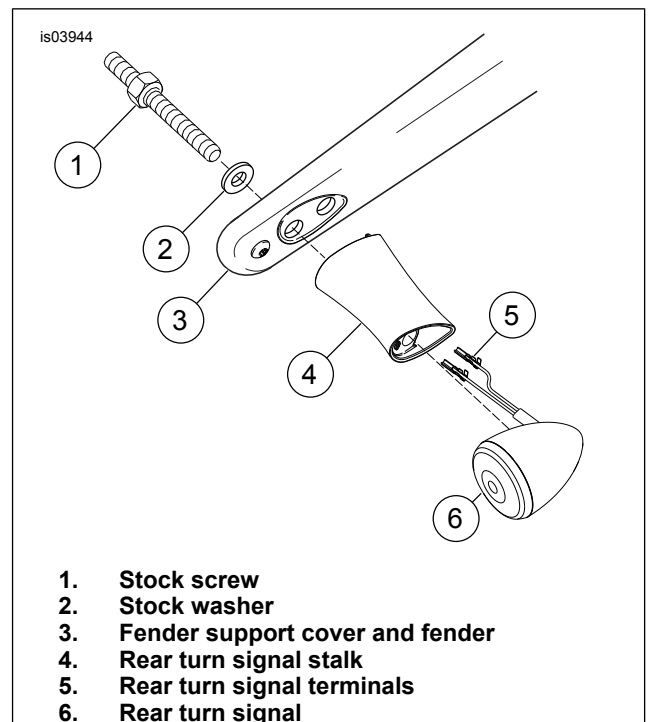


Figure 7. Install Rear Turn Signals

4. Connect the turn signal to the tail lamp assembly.
5. Repeat procedure for the opposite side rear turn signal.

Return to Service

NOTE

Refer to the appropriate Service Manual for specific information on the following generalized steps.

▲ WARNING

Connect positive (+) battery cable first. If positive (+) cable should contact ground with negative (-) cable connected, the resulting sparks can cause a battery explosion, which could result in death or serious injury. (00068a)

1. Connect battery, positive (+) cable first, then install battery and left side cover.
2. Install tail lamp cover.
3. Install fuel tank.
4. Connect battery negative (-) cable.

5. Install Ignition Control Module and secure with two nuts.

▲ WARNING

After installing seat, pull upward on seat to be sure it is locked in position. While riding, a loose seat can shift causing loss of control, which could result in death or serious injury. (00070b)

▲ WARNING

Be sure that all lights and switches operate properly before operating motorcycle. Low visibility of rider can result in death or serious injury. (00316a)

6. Install seat.

SERVICE PARTS

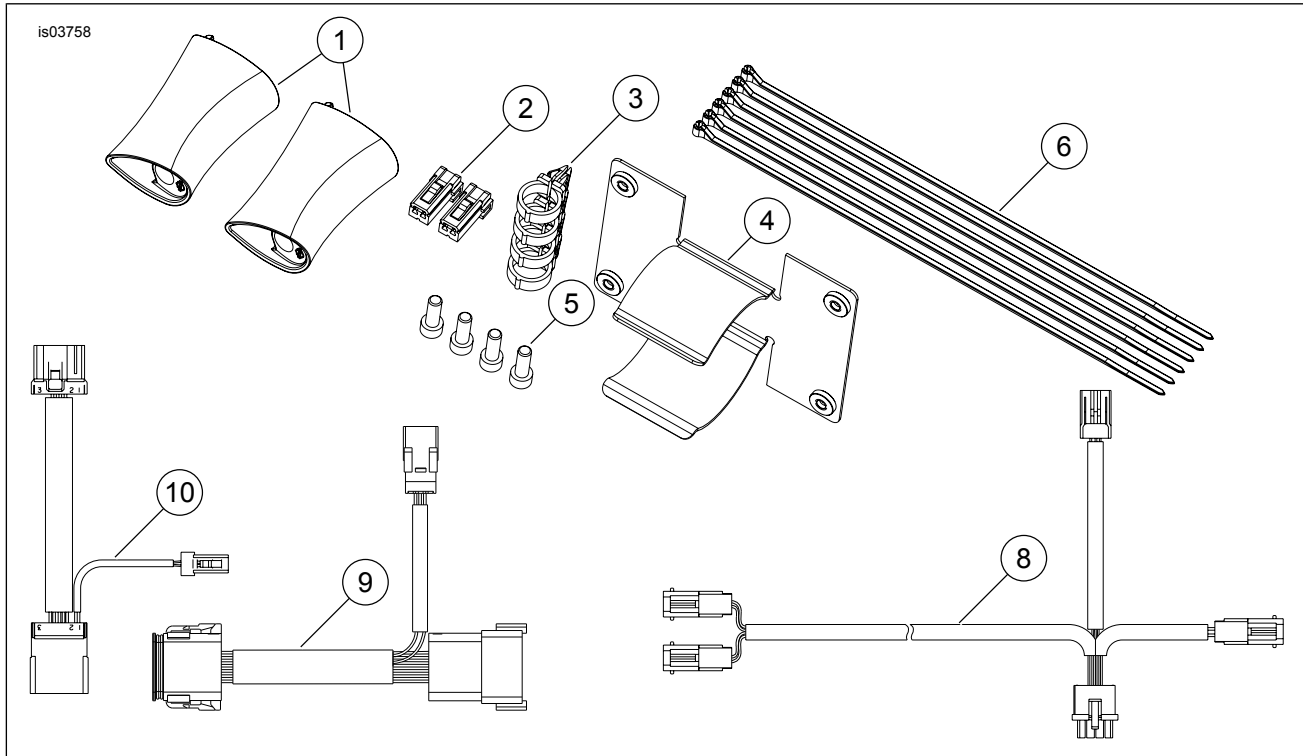


Figure 8. Service Parts for Mounting Kit for International Mini-Bullet Style LED Turn Signals (69590-07)

Table 1. Service Parts Table

| Item | Description (Quantity) | Part Number |
|------|---|-------------|
| 1 | Mount stalk, LED turn signal (2) | 69515-07 |
| 2 | Housing, 2-position socket, black (2) | 73152-96BK |
| 3 | Retainer, wire harness (4) | 70345-84 |
| 4 | Mounting clip, LED controller | 69594-07 |
| 5 | Screw, socket head, with lock patch, #10-24 x 0.625 (4) | 4644 |
| 6 | Cable strap (6) | 10181 |
| 7 | Dielectric grease, 5 gram (not shown) | 76001-04 |
| 8 | Harness, Control Module | 70622-07 |
| 9 | Harness, TSM/TSSM interconnect | 70482-07 |
| 10 | Harness, rear interconnect | 70490-07 |