



INSTRUCTIONS

-J03854

2008-04-14

XL REAR AXLE COVER KIT

GENERAL

Kit Number

46399-05, 43013-09

Models

For model fitment information, see the P&A Retail Catalog or the Parts and Accessories section of www.harley-davidson.com (English only).

Kit Contents

See Figure 1 and Table 1.

INSTALLATION

1. Place axle covers in position over ends of swingarm with the deeper cover on the left side (covering the axle nut).
2. Fasten the clamping bars (3) to the backs of the covers using locking hex nuts (4) and wave washers (5) securing the covers to the swingarm. Tighten the nuts evenly until the wave washers are flattened. Do not over-tighten the nuts.

NOTE

It may be necessary to change the orientation of the axle or axle nut to provide clearance for the cover.

Change the Orientation of the Axle or Axle Nut

1. Loosen the axle nut and rotate the axle to the proper orientation.
2. Tighten the axle nut to 98–106 N·m (72–78 ft-lbs). Check for clearance.
3. Repeat if necessary until the necessary clearance has been achieved.

SERVICE PARTS

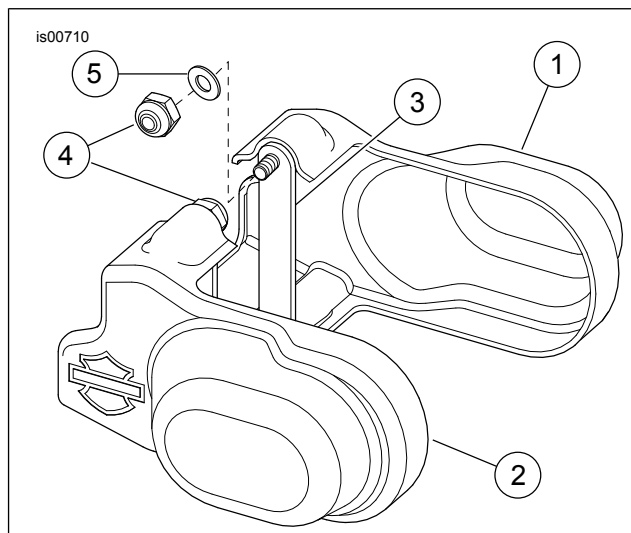


Figure 1. Service Parts: XL Rear Axle Cover Kit

Table 1. Service Parts: XL Rear Axle Cover Kit

Item	Description (Quantity)	Part Number
1	Axle cover, right	Not Sold Separately
2	Axle cover, left	Not Sold Separately
3	Mounting strap (2)	Not Sold Separately
4	Nut, #10-24 locking (4)	7624
5	Wave washer (4)	Not Sold Separately

