



INSTRUCTIONS

J03663

2006-05-03



SCREAMIN' EAGLE® HIGH FLOW AIR CLEANER KIT

GENERAL

Kit Number

29042-04B

Models

Fits 2004-later XL Sportster® model motorcycles with Stock air cleaner cover. Air Cleaner Cover Kit 29792-04 requires separate purchase of Adapter Kit Part Number 29848-04.

NOTE

Harley-Davidson motorcycles equipped with some Screamin' Eagle high-performance engine parts may not be used on public roads, and in some cases, must be restricted to closed course competition. This engine related performance part is intended for racing applications, and is not legal for sale or use in California on pollution-controlled motor vehicles.

Additional Parts Required

NOTE

The following caution applies to EFI models only.

NOTICE

You must recalibrate the ECM when installing this kit. Failure to properly recalibrate the ECM can result in severe engine damage. (00399b)

NOTE

See a Harley-Davidson dealer for ECM (Electronic Control Module) calibration.

Kit Contents

See Figure 1 and Table 1.

INSTALLATION

NOTE

Loosen backing plate-to-carburetor screws a few turns at a time, at the same time pulling backing plate away from carburetor, to prevent screws from engaging threads in backing plate inserts. If screws engage insert threads, the inserts may accidentally be pulled out of backing plate.

1. Remove original air cleaner and backing plate according to instructions in the appropriate Service Manual. Save original components; some will be reused with new air cleaner in this kit.
2. Install three screws (1) fully into backplate inserts.

3. See Figure 1. Peel backing paper off air cleaner-to-carburetor gasket (2) and apply to "carburetor side" of backplate. Make sure gasket holes are lined up with backplate holes. Install screws and gaskets with a small amount of Loctite 243 (blue) to the threads.

4. Mount backplate (3) to carburetor. Align the three 1/4-20 screw holes in carburetor with the matching holes in the backplate. Insert the three screws (1) a few turns at a time to avoid breaking the backplate inserts loose. Tighten screws to 4.1–6.8 N·m (36–60 **in-lbs**).

NOTE

2004-2006 carburetor models only: Locate flat washers (13) between the backplate and cylinder head.

5. **Remove O-rings** from stock breather screws (B), apply Loctite 243 (blue) and insert screws into threaded holes in the cylinder head. Tighten stock breather screws to 13.6–27.1 N·m (10–20 ft-lbs).
6. Press breather hoses (6) over breather screws (B) and position outlet into guides and carburetor opening.

NOTE

This filter is a dry operating filter. No oil should be applied to the filter element.

7. Install the filter element (4) to the backplate. Insert the four screws (9). Apply Loctite 243 (blue) and tighten screws to 74.6–81.3 N·m (55–60 **in-lbs**).
8. Place the oval insert (5) on the stock cover (A) and insert the flat head screws (11).
9. Slide the spacers (10) onto the flat head screws (11). Thread the retaining rings (12) onto the screw threads, to secure the spacers in place.
10. Position the adapter cover (7) inside the air cleaner.
11. Attach the cover assembly to the filter using the two flat head screws (11).
12. Tighten the screws to 4.1–6.8 N·m (36–60 **in-lbs**).

AIR FILTER MAINTENANCE

Inspecting Filter Element

- Remove air cleaner cover and inspect filter element every 5000 miles, or more often when operating vehicle in adverse, dusty conditions.



Cleaning Filter Element

- Remove filter element from air cleaner assembly. Immerse element in an upright position (on its end) in a pan containing a shallow amount (3/4 the depth of filter pleats) of air filter cleaner/degreaser. Carefully "roll" the element within the solution along its perimeter until the entire outer surface of the filter pleats has been soaked. **Do not let dirty solution run to inside of filter.**

- Remove element from cleaner, and allow five minutes for cleaner to dissolve dirt. From the inside out, rinse the filter element with cold water. Shake off excess water, and allow filter element to air dry. **Do not dry with compressed air.**
- Do not add oil to this filter.

SERVICE PARTS

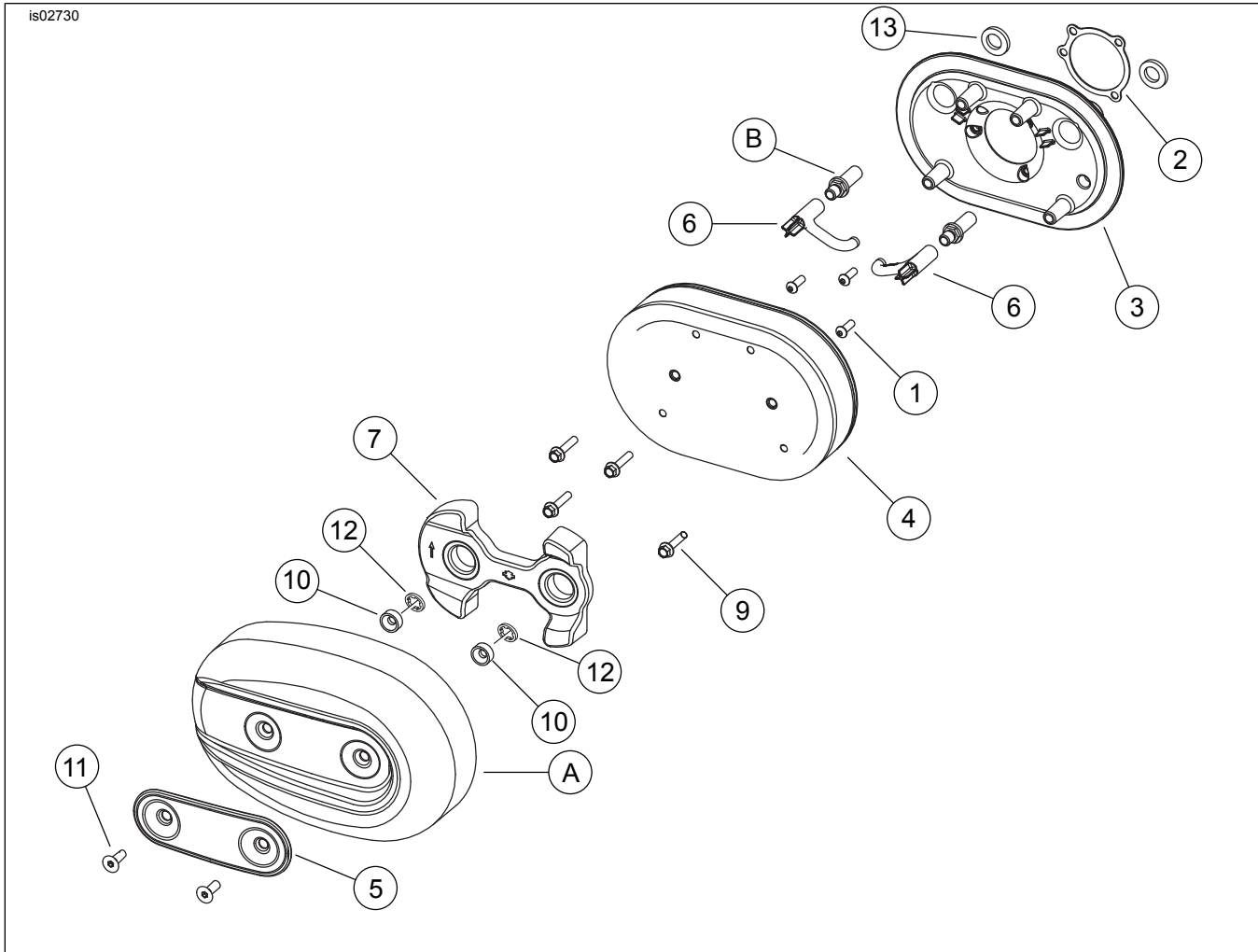


Figure 1. Service Parts: Screamin' Eagle High Flow Air Cleaner Kit For Sportster

Table 1. Service Parts: Screamin' Eagle High Flow Air Cleaner Kit for Sportster

Item	Description (Quantity)	Part Number	Item	Description (Quantity)	Part Number
1	Screw, 1/4-20 x 3/4 inch long button head (3)	864A	9	Screws, 1/4-20 x 1-1/4 inch long hex flange head (4)	3643
2	Gasket, Carburetor inlet	29268-03Y	10	Spacer (2)	31507-04A
3	Backplate, Air Cleaner	29048-07	11	Screw, 5/16-18 x 7/8 inch long flat head chrome (2)	94113-95
4	Filter element, Air Cleaner	29044-04B	12	Retaining ring (2)	62894-04
5	Oval Insert, Air Cleaner	29051-04	13	Flat washer (2) (2004-2006 carburetor models only)	6918
6	Hose, Breather (2)	63520-04	Items mentioned in text but not included in kit		
7	Adapter, Cover	29047-04	A	Stock air cleaner cover	
8	Loctite (not shown)	94635-98	B	Breather screw	