



INSTRUCTIONS

J03662

2008-03-01



SCREAMIN' EAGLE PRO HIGH FLOW AIR CLEANER KIT

GENERAL

Kit Number

29066-03A

Models

For model fitment information, please see the P&A Retail Catalog or the Parts and Accessories section of www.harley-davidson.com (English only).

NOTE

This engine related performance part is intended for High Performance or Racing applications and is not legal for sale or use on pollution controlled motor vehicles. This kit may reduce or void the limited vehicle warranty. Engine related performance parts are intended for the experienced rider only.

Additional Parts Required

⚠ WARNING

Rider and passenger safety depend upon the correct installation of this kit. Use the appropriate service manual procedures. If the procedure is not within your capabilities or you do not have the correct tools, have a Harley-Davidson dealer perform the installation. Improper installation of this kit could result in death or serious injury. (00333b)

NOTE

This instruction sheet references Service Manual information. A Service Manual for your model motorcycle is required for this installation and is available from a Harley-Davidson dealer.

Kit Contents

See Figure 1 and Table 1.

REMOVAL

⚠ WARNING

When servicing the fuel system, do not smoke or allow open flame or sparks in the vicinity. Gasoline is extremely flammable and highly explosive, which could result in death or serious injury. (00330a)

1. Remove seat according to the instructions in the Service Manual.

⚠ WARNING

To prevent accidental vehicle start-up, which could cause death or serious injury, disconnect battery cables (negative (-) cable first) before proceeding. (00307a)

⚠ WARNING

Disconnect negative (-) battery cable first. If positive (+) cable should contact ground with negative (-) cable connected, the resulting sparks can cause a battery explosion, which could result in death or serious injury. (00049a)

2. Disconnect battery cables, negative (-) cable first.

NOTE

Loosen backplate-to-carburetor screws a few turns at a time, while also pulling backplate away from carburetor, to prevent screws from engaging threads in backplate inserts. If screws engage insert threads, the inserts may accidentally be pulled out of backplate.

3. Remove existing air cleaner assembly. Save air cleaner cover, flat head screws that secure cover, and breather hose, but discard remaining components. Refer to AIR CLEANER REMOVAL in Service Manual.

INSTALLATION

Install Air Cleaner

NOTICE

Install air filter before running engine. Failure to do so can draw debris into the engine and could result in engine damage. (00207a)

⚠ WARNING

The element in this kit is specifically designed for use with the OE (original equipment) cover. Using this kit with an air cleaner cover other than the OE cover could lead to failure of the element faceplate. The kit may be used in conjunction with other H-D accessory covers provided the appropriate adapter recommended in those kits is used. If the element faceplate fails the cover could detach possibly distracting the rider which could result in death or serious injury. (00400b)

NOTE

When servicing the air cleaner, apply Loctite 243 (Blue) to threads of all fasteners.

1. See Figure 1. Install three screws (1) fully into backplate inserts.
2. **For 1988 - 1990 Models Only:** Drill out baseplate at hose connection. Install original breather hose (A) to backplate (2) with clamp (3).
3. Peel paper backing off gasket (4) and apply to "carburetor side" of backplate. Make sure gasket holes are lined up with backplate holes.



4. Install backplate (2) to carburetor.
 - a. Align three 1/4-20 screw holes in carburetor with matching holes in backplate.
 - b. Carefully install three screws (1) with backplate (2) into carburetor.
 - c. Tighten screws 36-60 **in-lbs** (4.1-6.8 Nm).
5. Install attaching parts to backplate and cylinder heads. *For 1988-1990 models: For 1991-2003 models:*
 - a. Insert two hex head screws (5), lockwashers (6), flat washers (7) and bushings (8) through backplate.
 - b. Install flat washers (9) between backplate and cylinder heads.
 - c. Install screws into mounting holes in front and rear cylinder heads. Tighten to 10-12 ft-lbs (13.6-16.2 Nm).
 - a. Apply Loctite 243 (Blue) and insert breather screws (10) through backplate.
 - b. Install flat washers (9) between backplate and cylinder heads.
 - c. Install screws into threaded holes in cylinder head and tighten breather screws to 10-20 ft-lbs (13.6-27.1 Nm).
 - d. Push breather hoses (11) onto breather screws (10) and position outlet into guides and carburetor opening.

Install Air Cleaner Element and Cover

1. Install filter element (12) to backplate.
 - a. Secure filter element using four screws (13).
 - b. Apply Loctite 243 (Blue) and tighten screws to 55-60 **in-lbs** (74.6-81.3 Nm).
2. Install air cleaner insert (14) on stock air cleaner cover (B) with flat head screws (C).
3. Slide spacers (15) onto flat head screws (C). Then install retaining rings (16) onto screw threads to secure spacers in place.
4. Peel paper backing off foam ring (17) and position inside air cleaner cover.
5. Install cover assembly to filter using the two flat head screws (8).
6. Tighten screws to 36-60 **in-lbs** (4.1-6.8 Nm).

Final Assembly

⚠ WARNING

Connect positive (+) battery cable first. If positive (+) cable should contact ground with negative (-) cable connected, the resulting sparks can cause a battery explosion, which could result in death or serious injury. (00068a)

1. Connect battery cables, positive (+) cable first.

⚠ WARNING

After installing seat, pull upward on seat to be sure it is locked in position. While riding, a loose seat can shift causing loss of control, which could result in death or serious injury. (00070b)

2. Install seat according to the instructions in the Service Manual.

MAINTENANCE

Air Cleaner Element Maintenance

NOTE

This is a dry air filter. Do not apply oil to the filter element.

Do not dry with compressed air.

1. See Figure 1. Remove air cleaner cover (B) and inspect the filter element (12) every 5000 MI (8000 KM), or more often under dusty conditions.
2. Remove filter element from air cleaner assembly.
3. Clean filter element as follows:
 - a. *Spray Element:* Tap element and brush with a soft bristle brush. Spray element with Air Filter Cleaner (99883-88T). *Immerse Element:* Immerse element in an upright position (on its end) in a pan containing a shallow amount (3/4 the depth of filter pleats) of Air Filter Cleaner (99883-88T) or soapy water. Carefully "roll" the element within the solution along its perimeter until the entire outer surface of the filter pleats has been soaked. *Do not let dirty solution run to inside of filter.*
 - b. Set element aside for ten minutes to dissolve dirt.
 - c. From the inside out, rinse the filter element with cold water.
 - d. Shake off excess water and air dry.
4. Install air cleaner element and cover.

SERVICE PARTS

is03756a

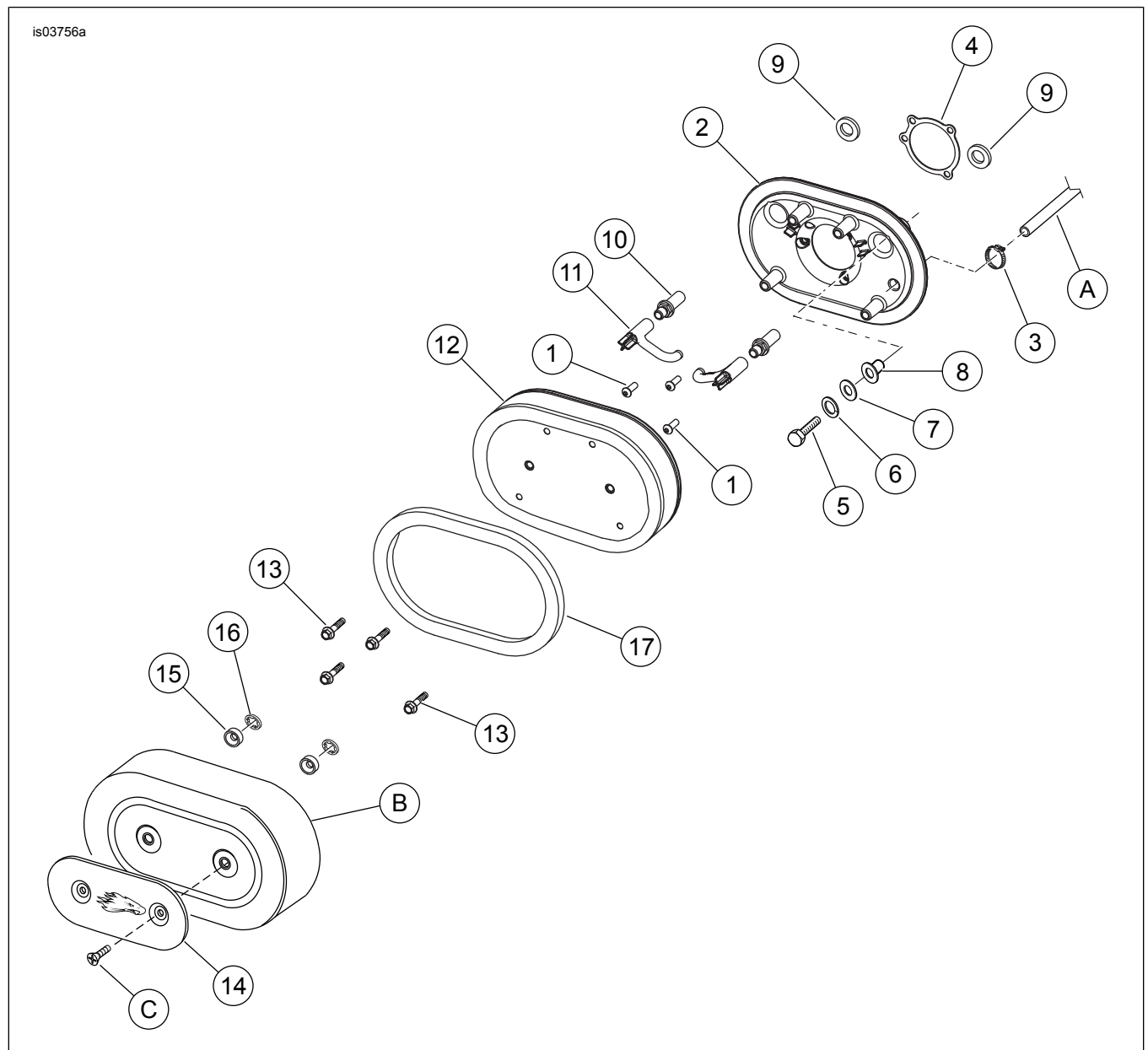


Figure 1. Service Parts: Screamin' Eagle Pro High Flow Air Cleaner Kit

Table 1. Service Parts: Screamin' Eagle Pro High Flow Air Cleaner Kit

Item	Description (Quantity)	Part Number
1	Screw, button head 1/4-20 x 3/4 in. (3)	864A
2	Backplate	29048-07
3	Clamp, hose (1988-1990 models only)	9946
4	Gasket, carburetor inlet	29268-03Y
5	Screw, hex cap (1988-1990 models only)	2818
6	Lockwasher (2) (1988-1990 models only)	7041
7	Plain washer (2) (1988-1990 models only)	6702
8	Bushing (2) (1988-1990 models only)	6794
9	Flat washer (2)	6918
10	Screw, breather (2) (1991-2003 models only)	3565
11	Hose, breather (2) (1991-2003 models only)	63520-04
12	Element, filter	29044-04B
13	Screw, hex flange 1/4-20 x 1-1/4 in. (4)	3643
14	Insert, air cleaner	29382-97A
15	Spacer (2)	31584-04
16	Retaining ring (2)	62894-04

Table 1. Service Parts: Screamin' Eagle Pro High Flow Air Cleaner Kit

Item	Description (Quantity)	Part Number
17	Foam ring	29627-04
18	Loctite 243 Threadlocker and Sealant - Blue, 0.5 ml packet (Not Shown)*	Not Sold Separately
Original equipment mentioned in text, but not included in kit:		
A	Breather hose	
B	Air cleaner cover	
C	Screw	
* Additional Loctite 243 (part number 99642-97) is available from a Harley-Davidson dealer.		