



INSTRUCTIONS

-J02993

REV. 09-10-03

Kit Number 69179-04

HIGH OUTPUT HORN KIT

General

This kit is designed for installation on 2004 and later XL883, XL883C (Custom), and XL1200R Sportster Model Motorcycles.

See Service Parts Illustration for a list of kit contents.

NOTE

A Service Manual for your motorcycle is available from any Harley-Davidson dealer.

Installation

WARNING

To prevent accidental vehicle start-up, which could cause death or serious injury, disconnect battery cables (negative cable first) before proceeding. (00048a)

WARNING

Disconnect negative (-) battery cable first. If positive (+) cable should contact ground with negative (-) cable connected, the resulting sparks can cause a battery explosion, which could result in death or serious injury. (00049a)

1. Refer to the Service Manual and follow the instructions given to remove the seat and disconnect the battery cables, negative(-) cable first. Retain all seat mounting hardware.
2. Follow instructions in the applicable Service Manual and remove the fuel tank.
3. See Figure 1. Loosen nuts on the Ignition Control Module and tip the module out of the way to gain access to the B⁺ Connector.

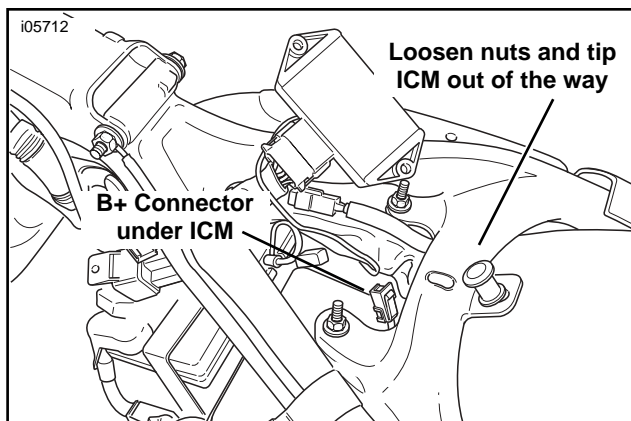


Figure 1. Ignition Control Module & B⁺ Connector

4. See Figure 2. Remove left side cover from frame and set aside.

5. See Service Parts Illustration and Figure 2. Obtain the Wiring Harness (15) from the kit. Insert the Electrical Connector Housing (11) into the B⁺ Connector on the motorcycle. Re-install the Ignition Control Module. Tighten nuts securely.
6. Remove the lower screw that fastens the metal strap on the battery. Place the ring terminal on the black wire from the harness over screw and tighten the screw securely.
7. See Figure 2. Begin routing new horn wiring harness upward between frame backbone and along left side of main harness.

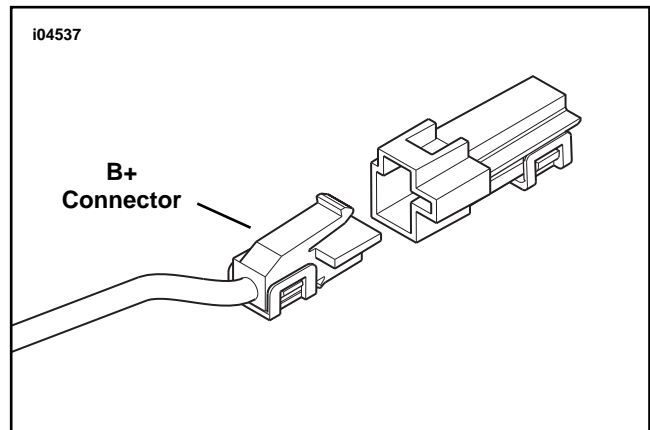


Figure 2. B⁺ Connector located under ICM

8. See Figure 3. Using a cable strap from kit, secure wire harness relay to main wiring harness in vertical position.

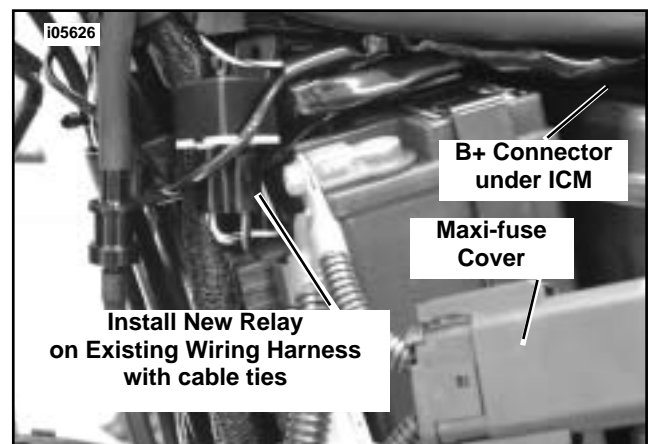


Figure 3. Remove Side Cover

9. See Figure 4. Continue routing new harness toward front and left side of bike and perform the following:
 - a. Start at existing front horn and trace the path of the existing horn harness up to the approximate center of tank mount under frame.
 - b. Carefully cut the conduit from the existing horn harness to expose yellow/black wire.
 - c. Locate and cut the yellow/black wire. Strip the wire ends and obtain the sealed butt connector from kit. Follow instructions in applicable Service Manual under "Installing Butt Splice Connectors" and splice yellow/black wire from horn harness to yellow/black of main harness.

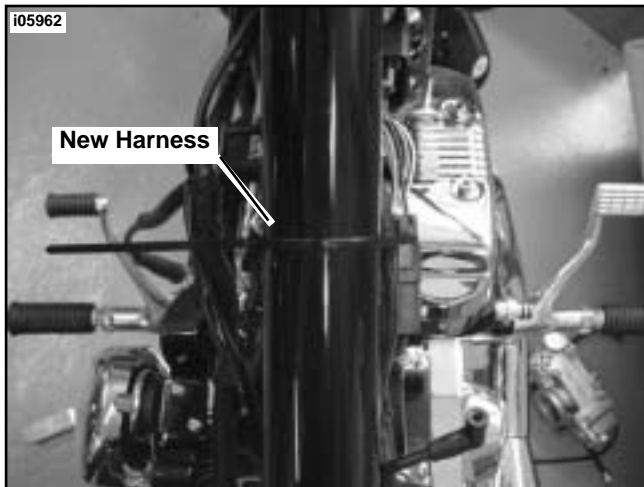


Figure 4. Connect New Harness to Existing Harness

10. See Figure 5. Continue to route terminal end of horn harness (black/yellow wire with insulated flag terminal) down between cylinders keeping to the inside of the top center engine mounting bracket. Bring harness out under engine mounting bracket on the left side.

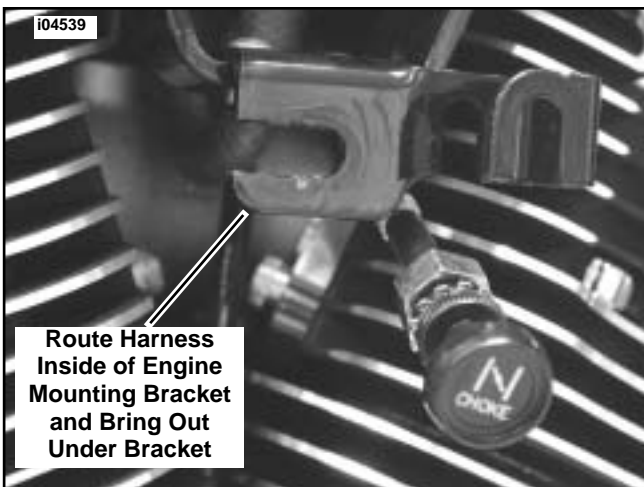


Figure 5. Route New Harness to Horn Mounting Location

11. Follow harness back and using remaining cable straps, secure harness to frame near fuel tank mount and at various places along route.
12. See Figure 6. Route ground black wire ring terminal to grounding bolt on the back side of the crankcase housing. Tighten fastener to 15-19 ft-lbs (20.3-25.8 Nm).

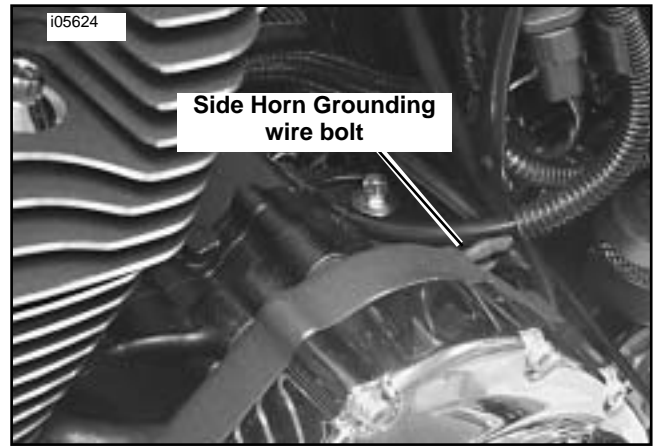


Figure 6. Side Horn Grounding Location

Assemble Horn

13. See the Service Parts Illustration. The horn must be partially assembled prior to installation. Perform the following:
 - a. Obtain two Clip Nuts (10) and Horn Cover (1) from the kit. Snap the clips onto the bracket portion of the horn and cover with "nut" side of clip facing the cover.
 - b. Obtain the horn (12) and metric flange nut (2) from kit. Orient horn as shown and slide up into cover. Apply a few drops of Loctite 243 (blue) to threads of nut and secure horn to cover bracket. Tighten to 100 **in-lbs** (11 Nm).
 - b. Obtain Horn Mounting Bracket (9), Horn Wire Clamp (5) and two Screws (6) from kit. Orient mounting bracket as shown and install screws (with upper screw through horn wire clamp) into clip nuts. Tighten screws securely.
14. See Figure 7. Remove the two flange hex head mounting screws and set aside. Remove and discard the enricher knob bracket from center engine mount.

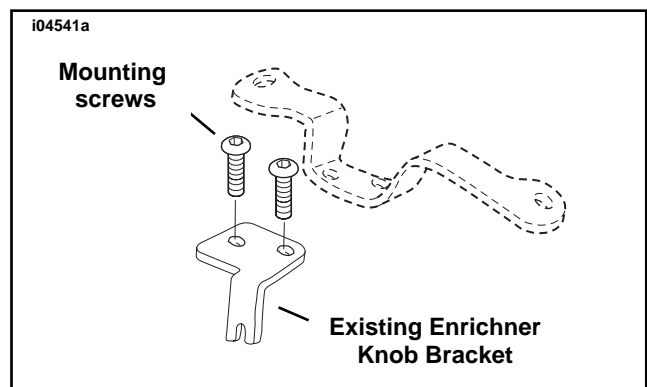


Figure 7. Remove Enricher Knob Bracket

15. See Service Parts Illustration. Obtain the new enricher knob and horn bracket (17). Secure bracket to center engine mount using the two screws from step 14 and tighten securely.
16. Obtain Rubber Mount (3) and Locknut (4) from kit. Install rubber mount to enrichment knob/horn bracket using locknut and tighten securely.

17. Obtain chrome acorn nut (18) and lockwasher (11) from kit. Install horn assembly from step 13 to rubber mount and tighten acorn nut to 5-15 ft-lbs (7-20 Nm).
18. Route both the ground horn wire and power (yellow/black) wire through the horn wire clamp. If necessary, loosen or remove the clamp screw and open slightly, to allow the wiring to pass through, then reinstall. Attach black (ground) flag terminal to rear horn spade terminal. Attach wire harness (power wire, yellow/black) to front horn spade terminal.
19. Follow instructions in applicable Service Manual and reinstall fuel tank.

20. Reconnect positive battery cable.
21. Refer to Service Manual and install seat.

⚠ WARNING

After installing seat, pull upward on front of seat to be sure it is in locked position. While riding, a loose seat can shift causing loss of control, which could result in death or serious injury. (00070a)

22. Test horn for proper operation.

⚠ WARNING

Connect positive (+) battery cable first. If positive (+) cable should contact ground with negative (-) cable connected, the resulting sparks can cause a battery explosion, which could result in death or serious injury. (00068a)



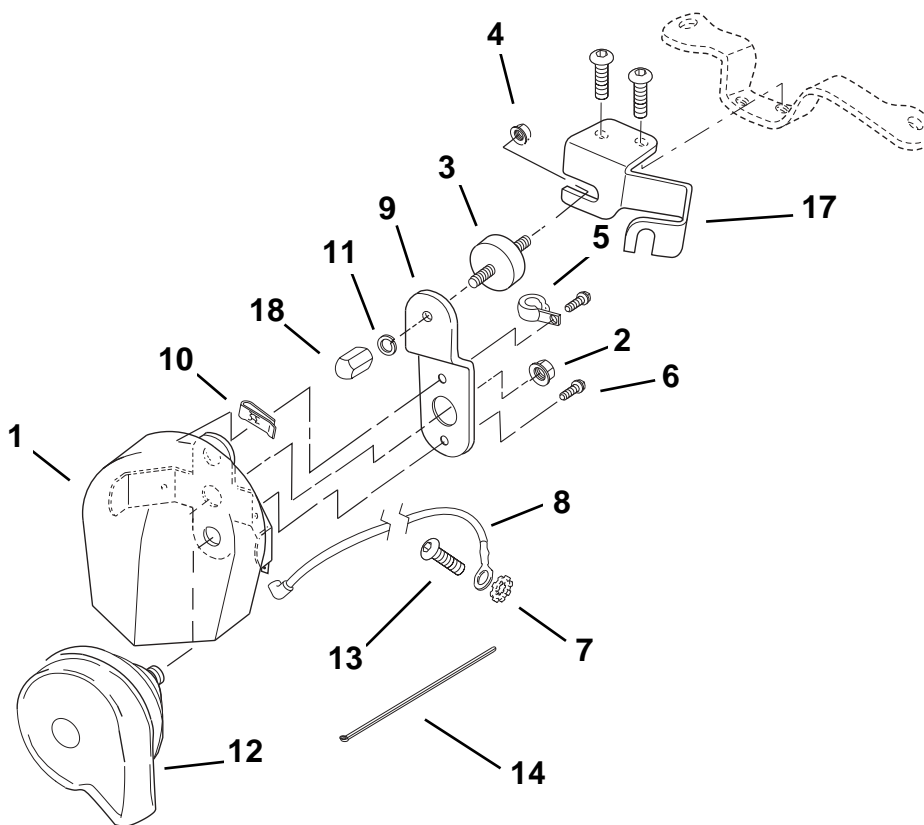
Service Parts

Part No. 69179-04

Date 09/03

High Output Horn Kit For Sportster

i04543a



Item	Description (Qty)	Part Number	Item	Description (Qty)	Part Number
1	Cover	69012-93A	10	Clip nut (2)	8108
2	Nut, metric	7495	11	Lockwasher	7041
3	Mount, rubber	69123-92	12	Horn	69061-99
4	Nut, lock	7531	13	Screw, self tapping #10	4104
5	Clamp, horn wire	69062-91A	14	Strap, cable (4)	10065
6	Screw (2)	3563	15	Wire harness (not shown)	71094-04
7	Lockwasher	7145W	16	Butt splice (not shown)	70586-93
8	Ground wire	7 0 0 8 7 - 9 5	17	Bracket, horn and choke	16355-04
9	Bracket, horn	69120-91	18	Nut, acorn	7481