



INSTRUCTIONS

-J02974

REV. 6-20-03

Kit Number 49053-04

SPORTSTER ADJUSTABLE HIGHWAY FOOTPEG SUPPORT KIT

General

This kit is designed for installation on all 2004 and later XL Sportster model motorcycles with mid-mounted foot controls.

This kit contains the following items:

QTY	DESCRIPTION
1	Arm, right - Long arm
1	Arm, left - Short arm
2	Mounting plate
2	Bolt, hex head, 1/2-20 x 1-1/4
2	Lockwasher, 1/2
2	Footrest support
4	Lockwasher, 3/8
2	Screw, hex socket hd, 3/8-16 x 2-1/4
4	Cable strap
2	Nylok nut, 3/8-16
2	Screw, hex head, 3/8-16 x 1-1/2
2	Spring washer
2	Spacer 1-1/4 long
2	Spacer 3/4 long
2	Screw, hex socket hd, 3/8-16 x 2-1/2
2	Screw, hex head, 7/16-20 x 1
2	Lockwasher 7/16-20

NOTE

A Service Manual for your vehicle is available from any Harley-Davidson dealer.

Installation

1. See the Service Parts Illustration. The lower, right front, side of the motorcycle at the engine mount is shown.
2. Remove and discard the two mounting screws. The regulator wire support plate will stay in place on the frame.
3. See Service Parts Illustration. Place the right arm (1) on the mounting plate (3) with the arm adjusting dowel in the selected position hole (choice of three). Align the arm (1) bolt hole with the bolt hole in the mounting plate (3). Thread bolt (16) and washer (17) into arm. Tighten bolt to 54 ft-lbs (6.1Nm).
5. Place arm and the mounting plate with the two longer spacers (13) against the outside of the regulator wire support plate aligning the two mounting holes.
6. See Service Parts Illustration. Place washers (7) on the two longer screws and thread the two longer screws (15), with washers (7) through the mounting plate holes and into the engine support holes. Tighten screws (15) to 16-28 ft-lbs (21.7-38Nm).
7. Reposition regulator wires and wrap them to frame with a new cable strap from kit.
8. See Service Parts Illustration. To attach footpeg support (6) to arm (1):
9. Place washer (5) on bolt (4).
10. Place footpeg support (6) on arm (1).
11. Thread bolt and washer in arm (1) and into footpeg support (6).

WARNING

Footpegs must fold upward and toward the rear at about a 45° angle when retracted. If they do not, footpeg could contact ground while motorcycle is in a turn, causing loss of control or startling the rider, resulting in possible death or serious injury.

If footpegs do not fold up and back at a 45° angle, remove them and turn them over so the flat surface is facing forward.

12. To attach footpeg (sold separately) to footpeg support:
13. Install footpeg and spring washer (12) between the support prongs on the footpeg support (6). Secure the footpeg and spring washer (12) between the support prongs using bolt (11) and self-locking nut (10). Tighten bolt to 19 ft-lbs (25.8)
14. Repeat instructions 1 through 6 for left side footpeg mounting using remaining spacers and screws. There is no regulator bracket on left side.



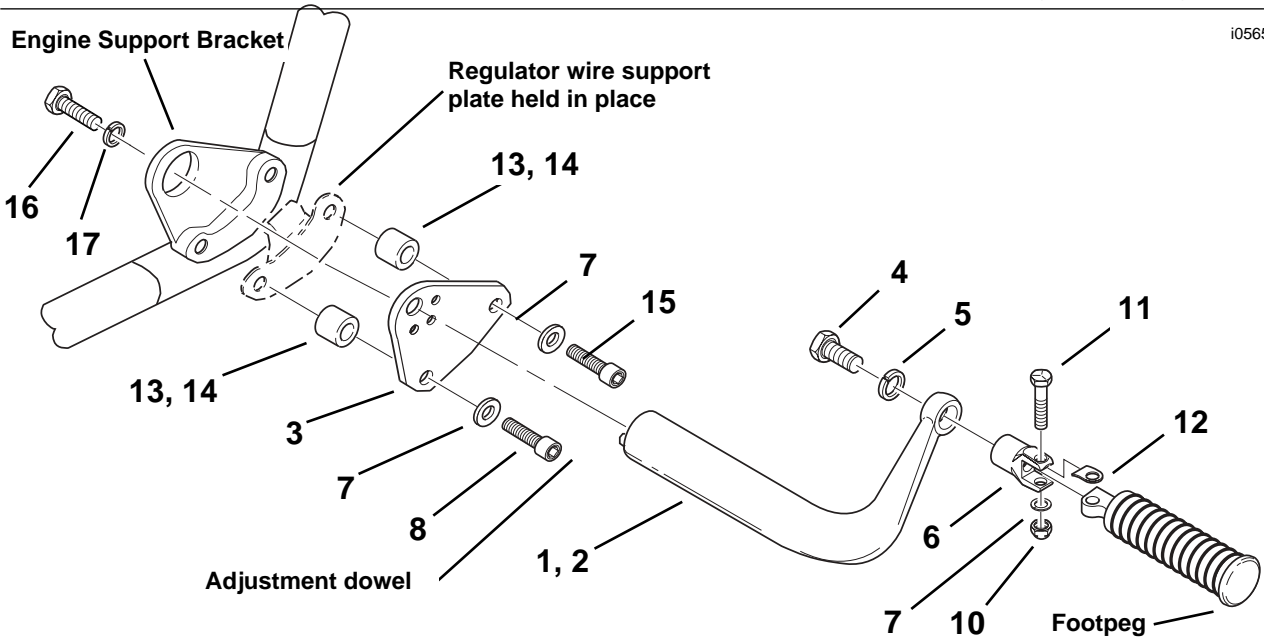
Service Parts

Part No. 49053-04

Date 5/03

XL Adjustable Footpeg Mounting Kit

i05653



Item	Description	Part No.	Item	Description	Part No.
1.	Arm, right	49061-96	10.	Nylok nut, 3/8-16 (2)	7778
2.	Arm, left	49062-96	11.	Screw, hex head 3/8-16 x 1-1/2 (2)	4721
3.	Mounting plate	49054-04	12.	Washer, spring (2)	50912-72
4.	Screw, hex hd 1/2-20 x 1-1/4 (2)	3486	13.	Spacer 1-1/4 long, right (2)	6637
5.	Lockwasher 1/2 (2)	7068	14.	Spacer 3/4 long, left (2)	6636
6.	Support, footpeg (2)	50900-72	15.	Screw, hex socket head 3/8-16 x 2-1/2 (2)	4344
7.	Lockwasher 3/8 (4)	6701	16.	Screw, hex head 7/16-20 x 1 (2)	4770
8.	Screw, hex soc hd 3/8-16 x 2-1/4 (2)	4305	17.	Lockwasher 7/16-20 (2)	7039
9.	Cable strap (4) (not shown)	10006			