



INSTRUCTIONS

-J02967

REV. 2006-09-25

SPORTSTER SADDLEBAG KITS

GENERAL

Kit Number

79052-04A, 79073-04A

Models

For model fitment information, please see the P&A Retail Catalog or the Parts and Accessories section of www.harley-davidson.com (English only).

Additional Parts and Tools Required

Separate purchase of additional parts or accessories may be required for proper installation on your model motorcycle. Refer to the latest Harley-Davidson Genuine Motor Accessories and Genuine Motor Parts catalog for a list of required parts or accessories for your model.

Proper installation of this kit also requires the following tools:

Loctite® Threadlocker and Sealant - Blue (99642-97)

Snap-On TT600-3 pick tool

Kent-Moore UltraTorch UT-100 (HD-39969) or other suitable radiant heating device

⚠ WARNING

Do not exceed saddlebag weight capacity. Put equal weight in each bag. Too much weight in saddlebags can cause loss of control, which could result in death or serious injury. (00383a)

NOTE

Maximum saddlebag weight is 7 pounds (3.2 Kg) for each bag.

⚠ WARNING

The rider's safety depends upon the correct installation of this kit. Use the appropriate service manual procedures. If the procedure is not within your capabilities or you do not have the correct tools, have a Harley-Davidson dealer perform the installation. Improper installation of this kit could result in death or serious injury. (00333a)

NOTE

This instruction sheet references Service Manual information. A Service Manual for your model motorcycle is required for this installation and is available from a Harley-Davidson Dealer.

Kit Contents

See Figure 4 and Table 1.

Existing Equipment Removal and Installation

⚠ WARNING

To prevent accidental vehicle start-up, which could cause death or serious injury, disconnect negative (-) battery cable before proceeding. (00048a)

1. Refer to the Service Manual and follow the instructions given to remove the seat, and disconnect the negative battery cable. Save seat mounting hardware for later use.
2. Properly support motorcycle under frame with stand or suitable blocking to prepare for addition of saddlebags. Support rear wheel to prevent it from falling when rear shock absorbers are disconnected in the following step.
3. See Figure 1. Disconnect the rear shock absorbers from the swing arm by removing bolt (1), washer (2) and nut (4) from the shock absorber (3). Repeat on opposite side of the motorcycle.
4. Carefully lower rear wheel enough to access the inside of the rear fender.

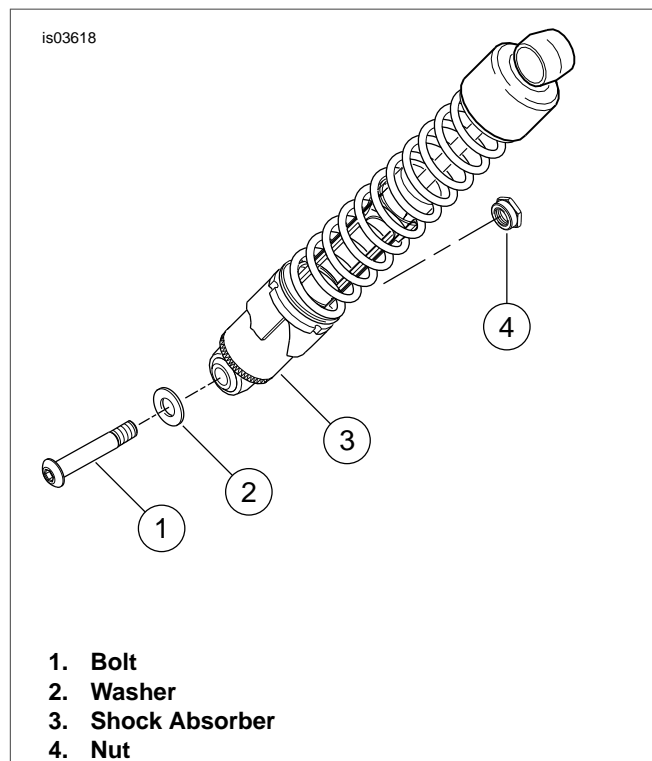


Figure 1. Rear Shock Absorber - Right Side Shown

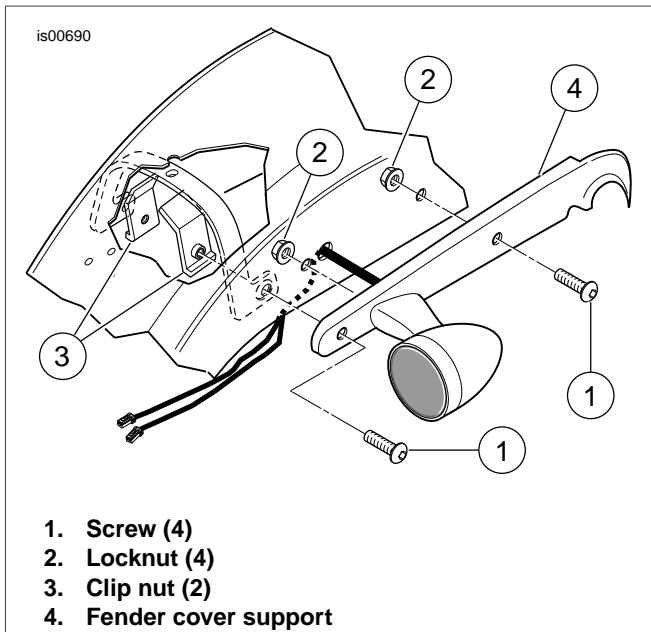


Figure 2. Rear Fender Support Removal

5. See Figure 2. It is necessary to remove taillight lens to access the Amp Multi-Lock connector. Unplug the connectors for each turn signal and push them down and through the opening in the taillight and fender.
6. Remove the front and rear button head screws (1), two locknuts (2) and under fender clip nuts (3) from the left and right rear fender support covers. Discard all but two button head screws and two locknuts.
7. Take note of how rear turn signal wire is routed (for later rerouting).
8. Carefully pull the turn signal assemblies (left and right) away from the fender support covers pulling the turn signal wires out of the holes in the sides of the fender.

Rear Turn Signal Relocation

NOTE

Rear turn signals must be relocated before saddlebags can be installed.

1. See Figure 4. Using a small piece of tape, tape spacer (13) from kit to frame over hole from where the rear turn signal stud was removed.
2. Remove turn signal stud from turn signal housing.
3. On models with sissy bars, reinstall sissy bar sideplate between fender and fender support cover.
4. See Figure 4. From the inside of the fender, insert a 5/16-18 x 4.1 inch bolt (17) through the hole at the narrow end of the rear most hole in fender, through fender support and cover, and out through the hole at the narrow end of the rear relocation pad (18). Place Loctite 243 (blue) on the threads of the mounting bolt. Loosely arrange turn signal housing and stalk on mounting bolt, running the lamp wire through the center hole in rear relocation pad, along channel on the inside of the pad and through the third hole from the rear in fender support cover.
5. Tighten bolt in turn signal housing to 132-216 in-lbs (14.9-24.4 Nm). Firmly pull lamp wire through fender support.

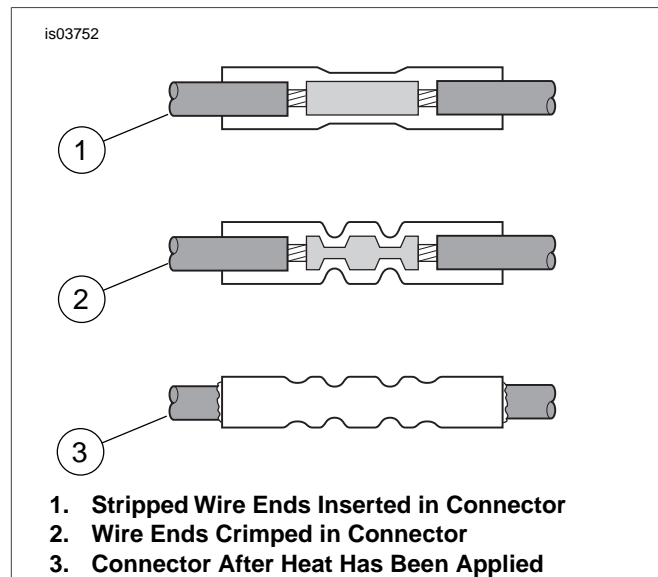
6. Repeat steps 1 through 5 for opposite side of motorcycle.

Butt-Splice Connections

NOTE

After the rear signals are relocated, the stock turn signal wires will not reach the connectors under the tail light lens. The wires with the terminals supplied in the kit will be spliced onto the stock wires.

1. See Service Manual Instructions for removal of the Amp Multi-Lock connectors from the stock turn signal wire
2. Cut the terminals from the ends of the turn signal wires. Cut away approximately 2 inches (5.0 cm) of the black conduit covering the end of the wire pair.
3. Strip a 3/8 inch (9.5 cm) section of the insulation from the cut ends of the signal wires.



1. Stripped Wire Ends Inserted in Connector
2. Wire Ends Crimped in Connector
3. Connector After Heat Has Been Applied

Figure 3. Installing the Sealed Butt Connectors

4. Determine the length of the additional wire required to reach the connectors under the tail light lens. Cut the wires with the terminals from the kit (one black and one violet) to the proper lengths. Strip a 3/8 inch (9.5 mm) section of the insulation from the cut ends of the wires.

NOTE

For proper fit of conduit (installed in a later step), make sure butt splices are staggered.

5. See Figure 3. Insert the two black turn signal wires into opposite ends of a butt splice connector. Insert the two violet wires into opposite ends of a second butt splice connector.
6. Match the color of the butt splice connector with the color of the crimp cavity of the crimping tool (Kent-Moore Part Number HD-38125-8 or equivalent). Crimp the wires into the connector.

WARNING

Be sure to follow manufacturer's instructions when using the UltraTorch UT-100 or any other radiant heating device. Failure to follow manufacturer's instructions can cause a fire, which could result in death or serious injury. (00335a)

- **Avoid directing heat toward any fuel system component. Extreme heat can cause fuel ignition/explosion resulting in death or serious injury.**
 - **Avoid directing heat toward any electrical system component other than the connectors on which heat-shrink work is being performed.**
 - **Always keep hands away from tool tip area and heat-shrink attachment.**
7. Using the Ultra Torch, UT-100, or other suitable radiant heating device, heat the crimped splice to encapsulate the butt splice connection. Apply heat from the center of the crimp out to each end until the meltable sealant comes out of both ends of the connector.

Final Connection of Turn Signal Wires

8. Slide the conduit over the wire pair (staggering connectors), making sure it overlaps the stock conduit. Trim the excess, if necessary.
9. Reattach the connectors to the terminals. Route the connectors through the opening in the fender behind the tail lamp and plug it in.
10. Repeat Steps 3 through 9 for the opposite side.
11. Reconnect negative battery cable.

WARNING

Be sure that all lights and switches operate properly before operating motorcycle. Low visibility of rider can result in death or serious injury. (00316a)

12. Turn ignition on and test for proper turn signal operation.

SADDLEBAG INSTALLATION

1. See Figure 4. From the inside of the fender, insert a 5/16-18 x 3.75 in. bolt (9) through forward most hole in fender, through fender support and cover. Install a 5/16-18 x 3.375 in. bolt (10) through the second hole from the rear of the fender, fender support, cover, and relocation pad.
2. Install saddlebag onto the 5/16-18 x 3.75 in. (9) and 5/16-18 x 3.375 in. (10) bolts. Install the washers (11) onto the bolts and thread the flange locknut (14) onto the front bolt and the acorn nut (15) onto the rear bolt.

Tighten locknut (15) to 24-27 ft-lbs (32.5-36.6 Nm).

3. Tighten the front screw (10) to 21-27 ft-lbs (28.5-36.6 Nm).
4. Install a thread protector cap onto the bolt end inside of the saddlebag.
5. Repeat Steps 1 through 4 for the opposite saddlebag.
6. Raise rear wheel until the rear shock absorbers align with shock absorber mounting holes on the swingarm. Support the wheel to prevent it from falling during the following step.
7. See Figure 1. Attach rear shock absorber to swingarm by installing bolt (1), washer (2) and nut (4). Tighten bolt to 45-50 ft-lbs (61.1-67.9 Nm). Repeat step on opposite side of motorcycle.

INSTALL REFLECTORS

WARNING

Federal Motor Vehicle Safety Standard (FMVSS) 108 requires motorcycles to be equipped with rear and side reflectors. Be sure rear and side reflectors are properly mounted. Poor visibility of rider to other motorists can result in death or serious injury. (00336b)

1. See Figure 4. Measure approximately 1-1/2 in. (38 mm) from the bottom edge of the saddlebag. Orient the reflector horizontally and carefully center the reflector mount between the straps of bags with straps or locate it at the rearward portion of bags without straps. Mark hole location.
2. Using appropriate tool, make two 3/16 in. holes in saddlebag.
3. Install reflector mount (3) on saddlebag using two pushnuts (4).
4. Remove adhesive backing from reflector (2) and install on mount.
5. Repeat steps 1 through 4 for the opposite saddlebag.

INSTALL SEAT

WARNING

After installing seat, pull upward on seat to be sure it is locked in position. While riding, a loose seat can shift causing loss of control, which could result in death or serious injury. (00070b)

1. See Service Manual instruction to install the seat.

SERVICE PARTS

is03849

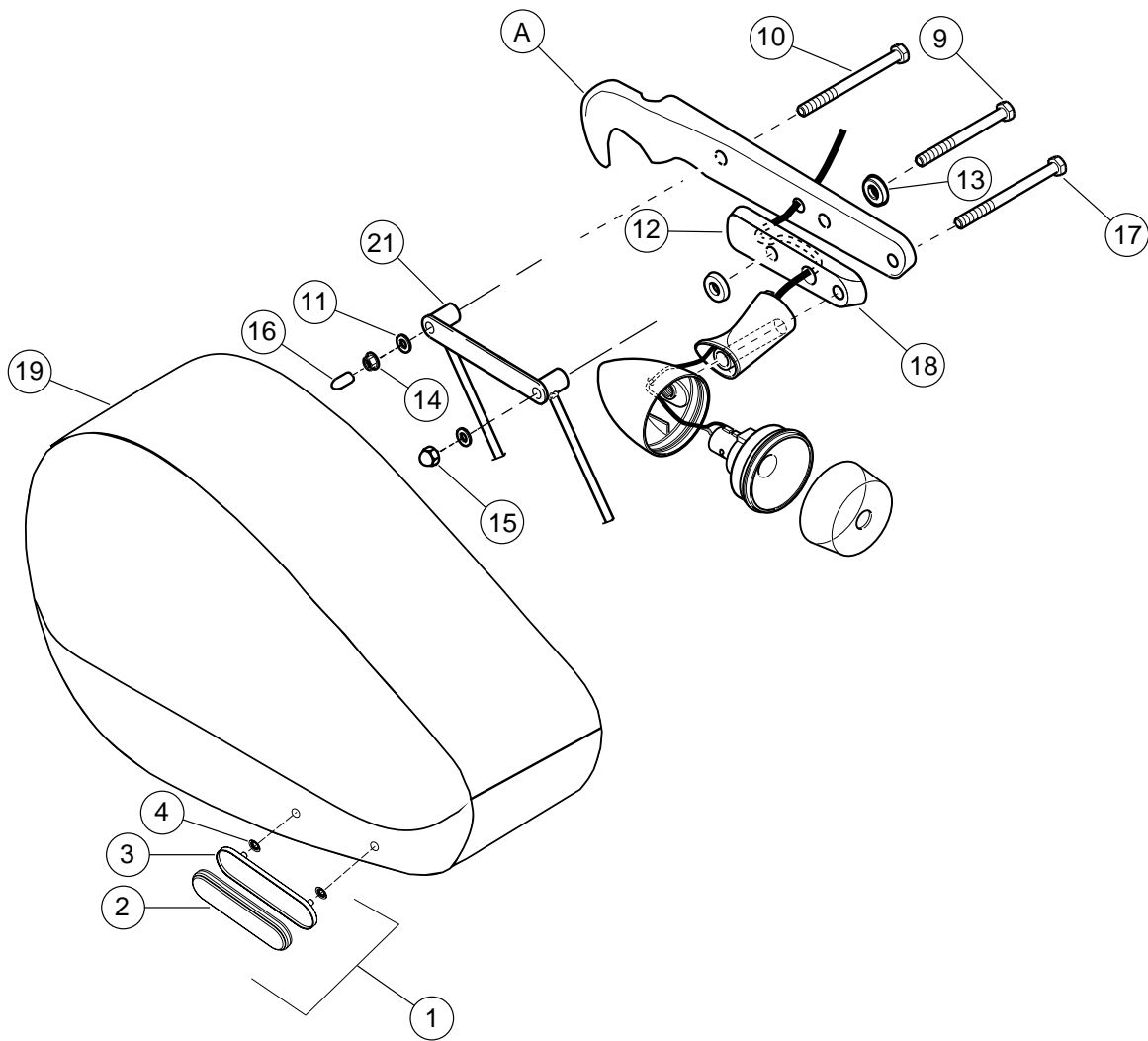


Figure 4. SPORTSTER SADDLEBAG KITS

Table 1. Service Parts Table

Item	Description (Quantity)	Part Number	Item	Description (Quantity)	Part Number
A	Fender Support Cover	Not Part of Kit	11	Washer, 0.32 x 0.90 x 0.08 in. (4)	6254
1	Reflector Kit (includes items 2-4)	59480-04	12	Spacer, 0.29 x 0.88 x 0.22 (2)	5792
2	• Reflector, red	59173-00	13	Spacer, 0.375 x 0.75 x 0.37 (2)	Not Sold Separately
3	• Mount, reflector	Not Sold Separately	14	Locknut, 5/16-18 (2)	7857
4	• Pushnut (2)	8126A	15	Locknut, acorn, 5/16-18 (2)	7549A
5	Wire, black, 18 AWG, 12 in. w/terminal (2) (not shown)	Not Sold Separately	16	Cap, thread protector	Not Sold Separately
6	Wire, violet, 18 AWG 12 in. with terminal (2) (not shown)	Not Sold Separately	17	Screw, hex cap 5/16-18 x 4.1 in. (2)	Not Sold Separately
7	Connector, pre-insulated, sealed splice (4) (not shown)	70585-93	18	Rear directional relocation pad (2)	68502-04
8	Vinyl conduit, black, 12 in. length (2) (not shown)	Not Sold Separately	19	Saddlebag, left, Kit 79052-04A Saddlebag, left, Kit 79073-04A	79053-01 79074-01
9	Screw, hex cap 5/16-18 x 3.75 in. (2)	4298	20	Saddlebag, right, Kit 79052-04A Saddlebag, right, Kit 79073-04A	79054-01 79075-01

Table 1. Service Parts Table

Item	Description (Quantity)	Part Number	Item	Description (Quantity)	Part Number
10	Screw, hex cap 5/16-18 x 3.375 in. (2)	Not Sold Separately	21	Bracket, saddlebag	Not Sold Separately
			22	Leather Care Kit	Not Sold Separately