



# INSTRUCTIONS

-J02868

REV. 11-11-2003

Kit Number 42980-04

## FORWARD CONTROL CUSTOM REAR BRAKE LEVER KIT

### General

This kit fits all 2004 and later Sportster® XL 883C and XL 1200C model motorcycles.

See the Service Parts illustration for kit contents.

A footpeg clevis retaining ring (Part Number 11390) will also be needed. This item is available separately from any Harley-Davidson dealer.

Ask your Harley-Davidson Dealer about the selection of rider footpegs that are available for these models. These items can be easily installed at the same time as this kit.

#### NOTE

A Service Manual for your model motorcycle is available from any Harley-Davidson dealer.

### Installation

#### NOTE

Access to the brake lever will be improved by removal of the exhaust system. See EXHAUST SYSTEM, REMOVAL in the Service Manual.

#### WARNING

To prevent accidental vehicle start-up, which could cause death or serious injury, remove maxi-fuse before proceeding. (00251a)

1. Refer to FUSES AND STARTER RELAY in the Service Manual and follow the instructions given to remove the maxi-fuse.

2. See the Service Parts illustration. Unscrew the brake rod from the existing brake lever and the master cylinder bell crank.

#### WARNING

Always wear proper eye protection when removing or installing retaining rings. Use the correct retaining-ring pliers. Verify that tips of pliers are not excessively worn or damaged. Slippage may propel the ring with enough force to cause serious eye injury.

3. Remove the footpeg-clevis retaining ring and screw, and remove the footpeg/ clevis/ brake lever assembly from the motorcycle. Slide the brake lever off the clevis. Discard the retaining ring.
4. Slide the new brake lever (1) onto the clevis. Mount the footpeg/ clevis/ brake lever assembly onto the support bracket.

Line up the hole in the clevis with the hole in the support bracket, and secure with the screw removed in Step 3. Tighten the screw to 18-22 ft-lbs (24.4-29.9 Nm).

Install a new retaining ring on the end of the clevis.

5. Apply two drops of LOCTITE® 243 (blue) to the threads of both brake rod ball stud screws.

Thread one end of the brake rod into the master cylinder bell crank, and tighten to 120-180 **in-lbs** (13.6-20.4 Nm).

Thread the other end of the brake rod into the brake pedal. Tighten to 120-180 **in-lbs** (13.6-20.4 Nm).

6. Refer to FUSES AND STARTER RELAY in the Service Manual and follow the instructions given to re-install the maxi-fuse.



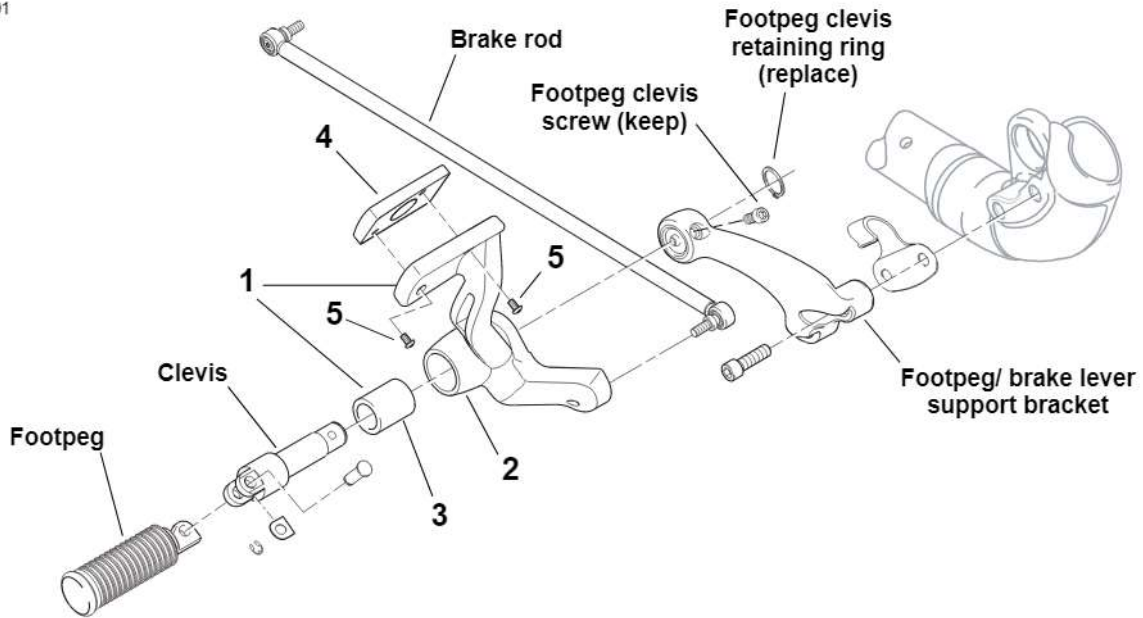
# Service Parts

Part No. 42980-04

Date 11/03

Forward Control Custom Rear Brake Lever

i02491



Item	Description (Quantity)	Part No.
1	Brake lever assembly (includes items 2 and 3)	Not sold separately
2	Brake lever, forward control	Not sold separately
3	Bushing	42569-03
4	Tread, rubber	42984-04
5	Screw, button head (2)	2457