



INSTRUCTIONS

-J02652

2004-01-01

"DETONATOR" CUSTOM FRONT WHEEL KIT

GENERAL

Kit Number

44550-03, 44552-03, 44554-03, 44556-03, 4458-03, 44660-03, 44661-03

Models

Table 1. Models

Kits	Wheel Dia.	Models
44550-03	16-inch	2000 and later FLSTC 2000 and later FLSTF
44552-03	16-inch	2000 and later Touring Models
44554-03	19-inch	2000 and later XL Models 2000-2003 Dyna (except FXDWG)
44556-03	21-inch	2000 and later FX Softail 2000 and later FXDWG
44558-03	21-inch	2000 and later XL Models 2000-2003 Dyna (except FXDWG)
44660-03	19-inch	2004 and later Dyna (except FXDWG)
44661-03	21-inch	2004 and later Dyna (except FXDWG)

NOTE

Accessory hub caps are not compatible with Detonator Custom Wheels.

▲ WARNING

Rider and passenger safety depend upon the correct installation of this kit. Use the appropriate service manual procedures. If the procedure is not within your capabilities or you do not have the correct tools, have a Harley-Davidson dealer perform the installation. Improper installation of this kit could result in death or serious injury. (00333b)

NOTE

This instruction sheet references Service Manual information. A Service Manual for your model motorcycle is required for this installation and is available from a Harley-Davidson Dealer.

Kit Contents

See Figure 1 and Table 2.

INSTALLATION

NOTICE

Do not re-use brake disc/rotor screws. Re-using these screws can result in torque loss and damage to brake components. (00319c)

NOTE

Along with the specific instructions that follow for each kit, refer to the appropriate Service Manual for wheel removal and installation procedures.

For Kit 44550-03 (FLSTC, FLSTF Models)

NOTE

The left side of the wheel has a groove machined in the hub to identify it as the disc side for installation, as well as the primary bearing side (see "Bearing Installation" on Page 2). The wheel should be installed so that the valve stem is on the right side of the motorcycle.

Wheel Spacer (43617-00) is included to replace the moon-style hubcap on FLSTC models.

Install chrome hubcap (44920-05) on the side opposite the brake disc. Torque to 20 ft-lbs (27 Nm).

See Figure 1. This kit contains the necessary parts for wheel installation. However, you will need to save the axle, axle nut, brake discs and (on FLSTF) wheel spacers for re-installation.

For Kit 44552-03 (Touring Models)

NOTE

The left side of the wheel has a groove machined in the hub to identify it as the left side for installation, as well as the primary bearing side (see "Bearing Installation" on Page 2). The wheel should be installed so that the valve stem is on the right side of the motorcycle.

See Figure 1. This kit contains the necessary parts for wheel installation. However, you will need to save the axle, axle nut, brake discs and wheel spacers for re-installation.

For Kit 44554-03 (19-Inch, for XL Models, and 2000-2003 Dyna Except FXDWG Models)

Install the wheel with the word "tubeless", cast into the side of the wheel, on the left side of the motorcycle.

A groove is machined in the left-side hub face to indicate the primary bearing side (see Bearing Installation).

NOTE

Before installing the wheel in the motorcycle, check that the spacer between the wheel bearings is aligned to allow the axle to pass through.

Dual-disc models: Install the brake discs according to Service Manual procedures. The chrome hubcap (4) is not used. Tighten screws (1) to 20 ft-lbs (27 Nm).

Single-disc models: Install the brake disc according to Service Manual procedures. Install the chrome hub cap (4) on the side opposite the brake disc. Tighten screws (1) to 20 ft-lbs (27 Nm).



See Figure 1. This kit contains the necessary parts for wheel installation. However, you will need to save the axle, axle nut, brake disc(s) and wheel spacer(s) for re-installation.

For Kit 44556-03 (FX Softail, FXDWG Models)

NOTE

The right side of the wheel has a groove machined in the hub to identify it as the right side for installation. There is an arrow cast into the hub on the left side to indicate the direction of rotation.

Spacer (43313-98) is used on FXSTS models only and is installed on the left side of the vehicle between the stock wheel spacer and fork.

This wheel kit includes a chrome hub plate (44921-05), to be installed on the wheel opposite the brake disc side.

See Figure 1. This kit contains the necessary parts for wheel installation. However, you will need to save the axle, axle nut, brake disc and wheel spacers for re-installation.

For Kit 44558-03 (21-Inch, for 2000 and later XL Softail, and 2000-2003 Dyna Except FXDWG Models)

An arrow cast into the wheel on the hub indicates the correct direction of tire and wheel installation and rotation.

A groove is machined in the left-side hub face to indicate the primary bearing side (see Bearing Installation).

NOTE

Before installing the wheel in the motorcycle, check that the spacer between the wheel bearing is aligned to allow the axle to pass through.

Dual-disc models: Install the brake discs according to Service Manual procedures. The chrome hubcap (4) is not used. Tighten the screws (1) to 20 ft-lbs (27 Nm).

Single-disc models: Install the brake disc according to Service Manual procedures. Install the chrome hub cap (4) on the side opposite the brake disc. Tighten the screws (1) to 20 ft-lbs (27 Nm).

See Figure 1. This kit contains the necessary parts for wheel installation. However, you will need to save the axle, axle nut, brake disc(s) and wheel spacer(s) for re-installation.

For Kits 44660-03 and 44661-03 (2004 and Later Dyna Except FXDWG Models)

The wheel should be installed so that the hub markings are on the left side of the motorcycle.

A groove is machined in the left-side hub face to indicate the primary bearing side (see Bearing Installation).

NOTE

Install chrome hubcap (44921-05) on the side opposite the brake disc. Tighten to 20 ft-lbs (27 Nm).

See Figure 1. This kit contains the necessary parts for wheel installation. However, you will need to save the axle, axle nut, brake disc(s) and wheel spacer(s) for re-installation.

Maintenance and Cleaning

Chrome parts must be maintained regularly to ensure that they keep their original shine and luster.

1. Clean heavily-soiled wheel surfaces using Harley Wheel and Tire Cleaner, (94658-98), applied with Harley Wheel and Spoke Brush, (43078-99).
2. Thoroughly clean chrome with a good quality chrome cleaner, such as Harley Bright Chrome Cleaner, (94683-99).
3. After cleaning and polishing, seal the finish with a good quality sealer such as Harley Glaze Polish and Sealant, (99701-84).

NOTE

For Kit 44554-03 (19-Inch, for XL Models, and 2000-2003 Dyna Except FXDWG Models) and **Kit 44660-03** (19-Inch, for 2004 and Later Dyna Except FXDWG Models), maintain tire pressure at 30 psi (207 kPa).

The gross axle weight rating is unaffected by the installation of this wheel on a vehicle originally equipped with 21-inch wheels.

NOTE

For Kits 44558-03 (21-Inch, for 2000 and later XL Models, and 2000-2003 Dyna Except FXDWG Models), and **Kit 44661-03** (21-Inch, for 2004 and Later Dyna Except FXDWG Models), maintain tire pressure at 30 psi (207 kPa).

The gross axle weight rating is unaffected by the installation of this wheel on a vehicle originally equipped with 19-inch wheels.

Bearing Installation

The groove machined in the hub face also indicates the primary bearing side.

When replacing or installing bearings, use Harley-Davidson tool part number H-D 44060 and install the primary-side bearing first according to the instructions in the applicable Service Manual.

SERVICE PARTS

is02243

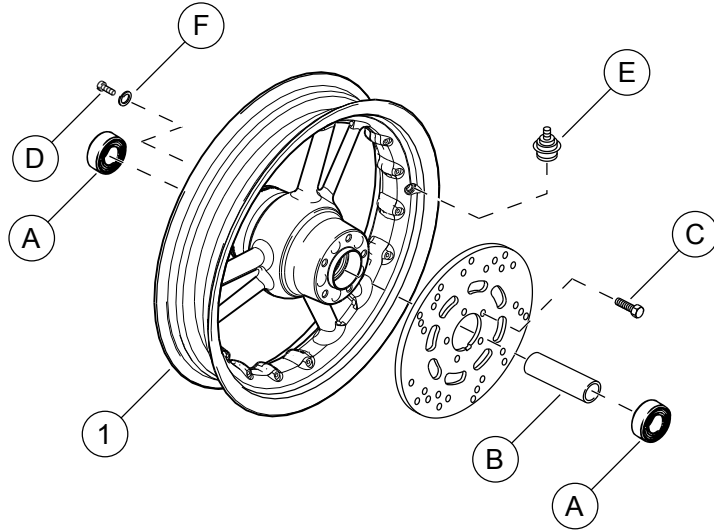


Figure 1. Service Parts: "Detonator" Custom Front Wheel Kits

Table 2. Service Parts Table

Item	Description (Quantity)	Part Number	Item	Description (Quantity)	Part Number
Kit 44550-03			44558-03		
1	Screw, Torx (10)	3655A	1	Screw, Torx (10)	3655A
2	Bearing, assembly, 3/4-inch (2)	9267	2	Bearing, assembly, 3/4-inch (2)	9267
3	Detonator custom wheel	Not Sold Separately	3	Detonator custom wheel	Not Sold Separately
4	Chrome hub cap	44920-05	4	Chrome hub cap	44921-05
5	Sleeve	43608-00	5	Sleeve	43613-00
6	Spacer	43617-00	7	Valve stem assembly	43206-01
7	Valve stem assembly	43206-01	8	Rim label (not shown)	Not Sold Separately
8	Rim label (not shown)	Not Sold Separately			
Kit 44552-03			Kit 44660-03		
1	Screw, Torx (10)	3655A	1	Screw, Torx (10)	3655A
2	Bearing, assembly, 1-inch (2)	9247	2	Bearing, assembly, 1-inch (2)	9247
3	Detonator custom wheel	Not Sold Separately	3	Detonator custom wheel	Not Sold Separately
5	Sleeve	43517-00	4	Chrome hub cap	44921-05
7	Valve stem assembly	43206-01	5	Spacer	43755-04
8	Rim label (not shown)	Not Sold Separately	7	Valve stem assembly	43206-01
			8	Rim label (not shown)	Not Sold Separately
Kit 44554-03			Kit 44661-03		
1	Screw, Torx (10)	3655A	1	Screw, Torx (10)	3655A
2	Bearing, assembly, 3/4-inch (2)	9267	2	Bearing, assembly, 1-inch (2)	9247
3	Detonator custom wheel	Not Sold Separately	3	Detonator custom wheel	Not Sold Separately
4	Chrome hub cap	44921-05	4	Chrome hub cap	44921-05
5	Spacer	43613-00	5	Sleeve	43755-04
7	Valve stem assembly	43206-01	7	Valve stem assembly	43206-01
8	Rim Label (not shown)	Not Sold Separately	8	Rim label (not shown)	Not Sold Separately
Kit 44556-03					
1	Screw, Torx (10)	3655A			
2	Bearing, assembly, 3/4-inch (2)	9267			
3	Detonator custom wheel	Not Sold Separately			
4	Chrome hub cap	44921-05			
5	Sleeve	Not sold			
6	Spacer	43313-98			
7	Valve stem assembly	43206-01			
8	Rim label (not shown)	Not Sold Separately			
Items mentioned in text but not in kit					
A	Brake Disc	Reference only			