



# INSTRUCTIONS

-J02297

REV. 07-21-2005

Kit Number 69179-02

## HIGH OUTPUT HORN FOR SPORTSTER

### General

This kit is designed for installation on 1996 and later XL883, XL883 Hugger, XL883 Custom and XL1200 Sport Model Motorcycles.

See *Service Parts Illustration* for a list of kit contents.

#### **WARNING**

The rider's safety depends upon the correct installation of this kit. Use the appropriate service manual procedures. If the procedure is not within your capabilities or you do not have the correct tools, have a Harley-Davidson dealer perform the installation. Improper installation of this kit could result in death or serious injury. (00333a)

#### NOTE

A *Service Manual* for your motorcycle is available from your Harley-Davidson dealer.

### Installation

#### **WARNING**

To prevent accidental vehicle start-up, which could cause death or serious injury, disconnect negative (-) battery cable before proceeding. (00048a)

#### **WARNING**

Disconnect negative (-) battery cable first. If positive (+) cable should contact ground with negative (-) cable connected, the resulting sparks can cause a battery explosion, which could result in death or serious injury. (00049a)

1. Disconnect battery cables, negative cable first.
2. Follow instructions in applicable Service Manual and remove seat.
3. Follow instructions in applicable Service Manual and remove fuel tank.
4. See Figure 1. Remove left side cover from frame. Remove plastic cover protecting electrical posts on circuit breaker. (inside cover).
5. See Service Parts Illustration and Figure 2. Obtain Wiring Harness (15) from kit. Install orange/white wire ring terminal to silver post on circuit breaker and reinstall nut. Tighten nut securely. Reinstall plastic cover to protect posts.

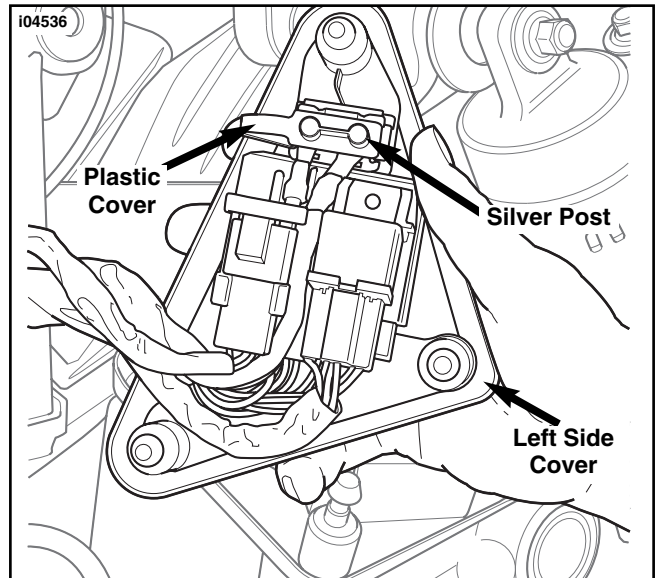


Figure 1. Remove Side Cover and Locate Silver Post

6. See Figure 2. Begin routing new horn wiring harness upward between frame backbone and along left side of main harness toward front of bike.
7. Using cable strap from kit, secure wire harness relay to main harness as shown.
8. Use existing screw or Self-Tapping Screw (13) from kit and install black wire ring terminal to small hole in upper frame crossmember. Tighten securely.

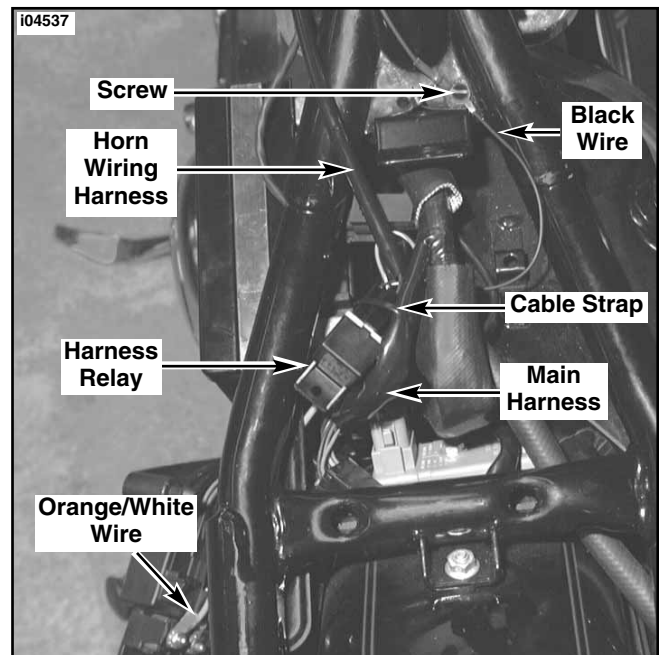


Figure 2. Route Harness Wiring

9. See Figure 3. Continue routing harness toward front of bike and perform the following:
  - a. Start at existing horn and trace the path of the existing horn harness up to approximate center of tank mount under frame.
  - b. Carefully cut the conduit from the existing horn harness to expose yellow/black wire.
  - c. Locate and cut the yellow/black wire. Strip the wire ends and obtain the sealed butt connector from kit. Follow instructions in applicable Service Manual under "Installing Butt Splice Connectors" and splice yellow/black wire from horn harness to yellow/black of main harness.

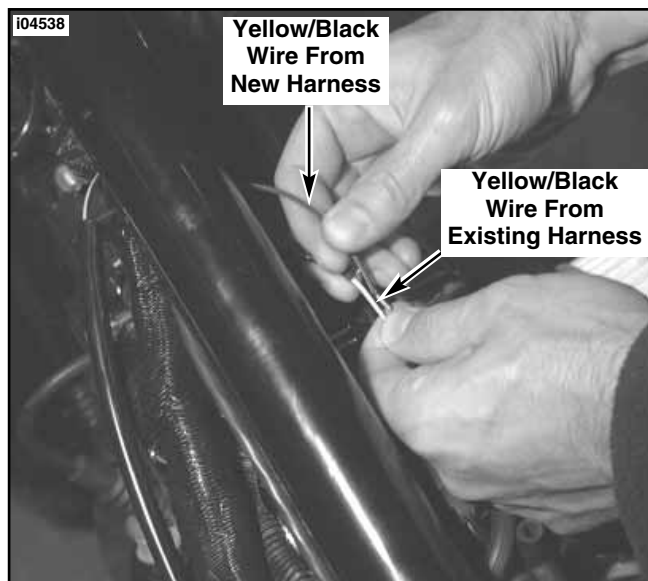


Figure 3. Connect New Harness to Existing Harness

10. See Figure 4. Continue to route terminal end of horn harness (black/yellow wire with insulated flag terminal) down between cylinders keeping to the inside of the top center engine mounting bracket. Bring harness out under engine mounting bracket on the left side.

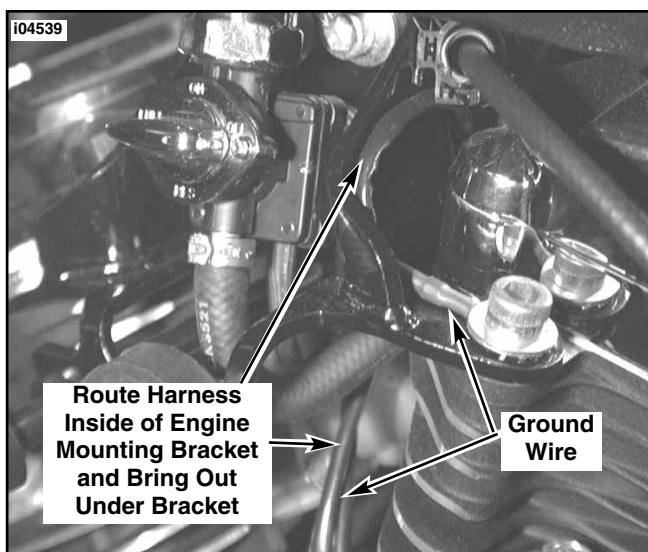


Figure 4. Route New Harness to Horn Mounting Location

11. Follow harness back and using remaining cable straps, secure harness to frame near fuel tank mount and at various places along route.
12. See Service Parts Illustration and refer to Figure 4. Obtain ground wire (8) and lockwasher (7) from kit. Remove bolt securing top engine mounting bracket to rear cylinder. Install ground wire ring terminal and lockwasher, the reinstall bolt. Tighten to 25-30 ft-lbs (33.9-40.7 Nm). Route the opposite end (flag terminal) to inside of engine bracket, then back down and under as shown.

### Assemble Horn

13. The horn must be partially assembled prior to installation. See the Service Parts Illustration and perform the following:
  - a. See Service Parts Illustration and Figure 5. Obtain two Clip Nuts (10) and Horn Cover (1) from kit. Snap the clips onto the bracket portion of the horn cover with "nut" side of clip facing the cover.
  - b. Obtain the horn (12) and metric flange nut (2) from kit. Orient horn as shown and slide up into cover. Apply a few drops of Loctite 243 (blue) to threads of nut and secure horn to cover bracket. Tighten to 100 in-lbs (11 Nm).
  - c. Obtain Horn Mounting Bracket (9), Horn Wire Clamp (5) and two Screws (6) from kit. Orient mounting bracket as shown and install screws (with upper screw through horn wire clamp) into clip nuts. Tighten screws securely.

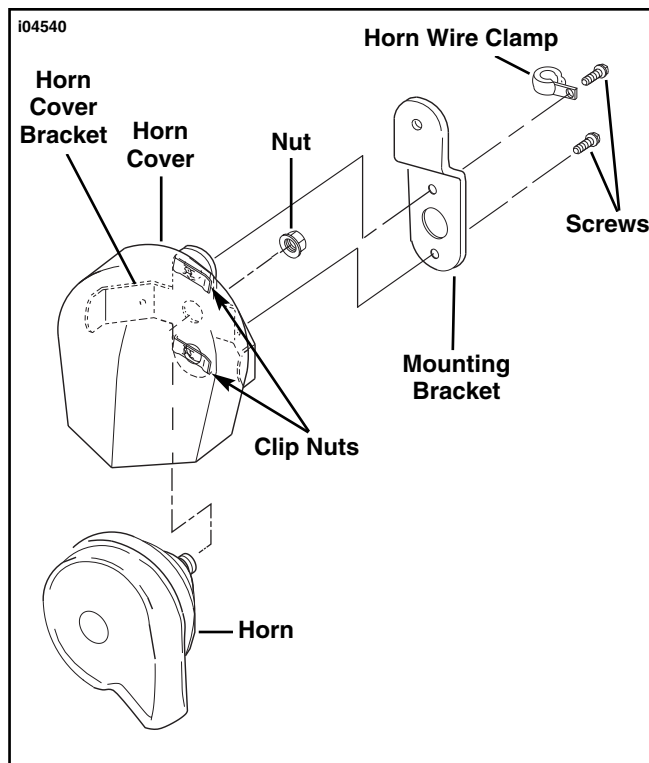
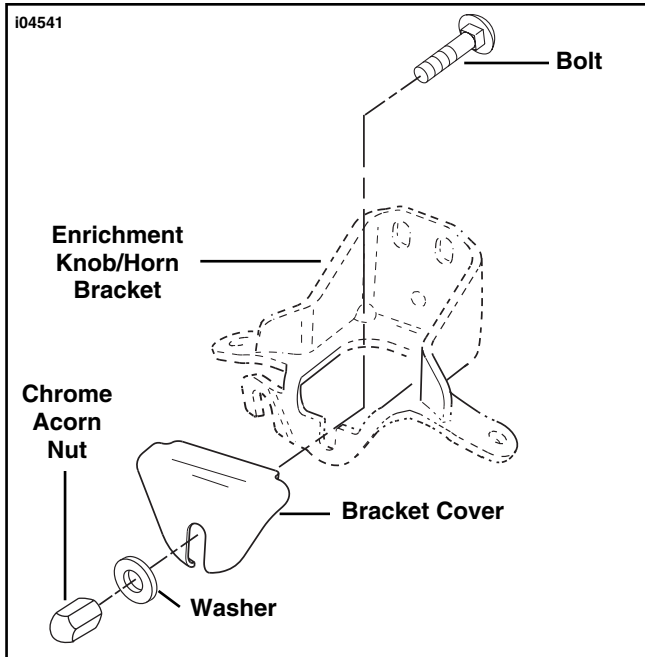


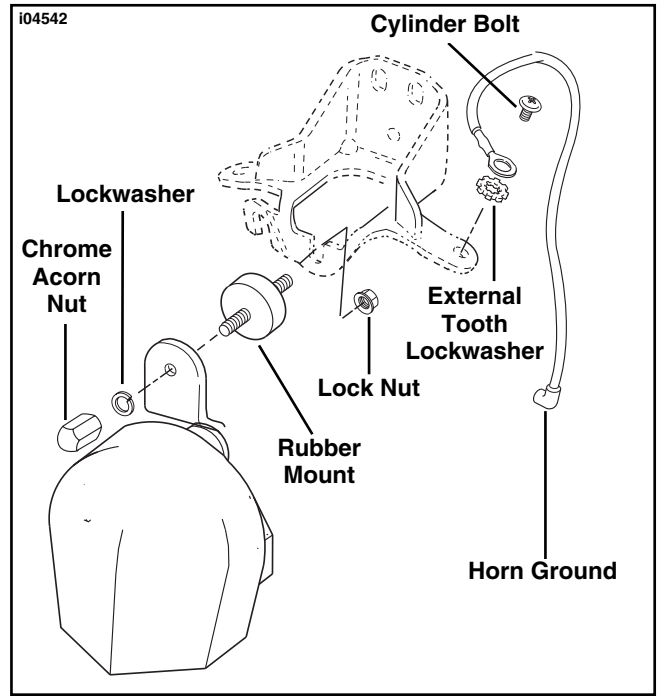
Figure 5. Assemble Horn

- See Figure 6. Remove chrome acorn nut, flatwasher and bolt securing bracket cover to bracket next to enrichment knob. Save chrome acorn nut but discard flatwasher, bolt and decorative cover.



**Figure 6. Remove Enrichment Knob/Horn Bracket Cover**

- See Service Parts Illustration and Figure 7. Obtain Rubber Mount (3) and Locknut (4) from kit. Install rubber mount to enrichment knob/horn bracket using locknut and tighten securely.
- Obtain Lockwasher (11) from kit, horn assembly and chrome acorn nut removed in Step 14. Install horn assembly to rubber mount and tighten acorn nut to 5-15 ft-lbs (7-20 Nm).
- Route both the ground horn wire and power (yellow/black) wire through the horn wire clamp. If necessary, loosen or remove the clamp screw and open slightly, to allow the wiring to pass through, then reinstall. Attach black (ground) flag terminal to rear horn spade terminal. Attach wire harness (power wire, yellow/black) to front horn spade terminal.



**Figure 7. Install Horn Assembly**

- Follow instructions in applicable Service Manual and reinstall fuel tank.

**⚠ WARNING**

**Connect positive (+) battery cable first. If positive (+) cable should contact ground with negative (-) cable connected, the resulting sparks can cause a battery explosion, which could result in death or serious injury. (00068a)**

- Reconnect positive battery cable.
- Refer to Service Manual and install seat.

**⚠ WARNING**

**After installing seat, pull upward on seat to be sure it is locked in position. While riding, a loose seat can shift causing loss of control, which could result in death or serious injury. (00070b)**

- Test horn for proper operation.



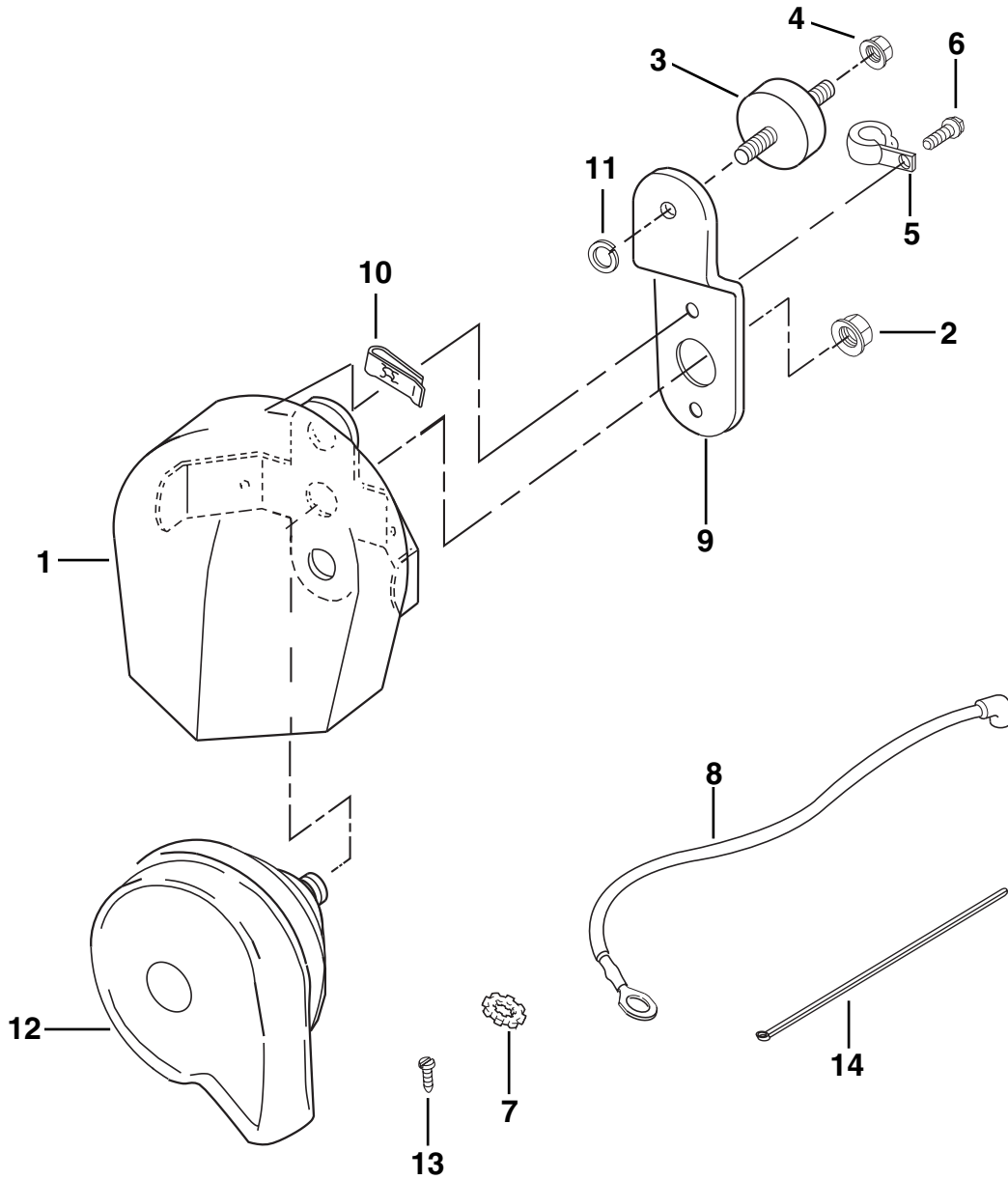
# Service Parts

Part No. 69179-02

Date 07/05

High Output Horn Kit For Sportster

i04543



Item	Description (Qty)	Part Number	Item	Description (Qty)	Part Number
1	Cover	69012-93A	9	Bracket, horn	69120-91
2	Nut, metric	7495	10	Clip nut (2)	8108
3	Mount, rubber	69123-92	11	Lockwasher	7041
4	Nut, lock	7531	12	Horn	Not sold
5	Clamp, horn wire	69062-91A	13	Screw, self tapping #10	4104
6	Screw (2)	3563	14	Strap, cable (4) (not shown)	10065
7	Lockwasher	7145W	15	Wire harness (not shown)	71094-02
8	Ground wire	70087-95	16	Butt splice (not shown)	70586-93