



INSTRUCTIONS

-J02281

REV. 6-23-2004

Kit Number 57904-02

100th ANNIVERSARY DETACHABLE WINDSHIELD/DOCKING HARDWARE KIT

General

This kit is a super sport smoked windshield assembly for 1988 and later XL, FXR and FXD models and installs on those models equipped with 39 mm front forks:

Kit 58164-96A is the docking hardware kit required to mount the windshield.

See the Service Parts illustrations for kit contents.

NOTE

A Service Manual for your vehicle is available from your Harley-Davidson Dealer.

Installation

MODELS EQUIPPED WITH FORK-MOUNTED TURN SIGNALS

If turn signals are not mounted on the upper fork bracket, go to INSTALLING THE WINDSHIELD. Otherwise, read this paragraph. On models with turn signals mounted on the upper fork bracket, the turn signals must be relocated to the lower fork bracket. To relocate the turn signals, use Directional Relocation Kit 72389-96. Refer to the instruction sheet provided with the kit for proper wiring procedure, then go to the windshield installation described in this instruction sheet.

INSTALLING THE WINDSHIELD

NOTE

Cover gas tank and front fender before beginning installation.

1. See Figure 1. Relocate clutch cable (1) to the inside of the handlebars (2) as shown in illustration as follows:
 - a. Slide rubber boot off cable adjuster. Adjuster is located approximately halfway along clutch cable by the front frame downtube.
 - b. Holding cable adjuster with 1/2 inch wrench, loosen jam nut using a 9/16 inch wrench. Back jam nut away from cable adjuster. Move adjuster toward jam nut to introduce a large amount of freeplay at the hand lever.
 - c. Remove small snap ring from pivot-pin groove at bottom of clutch lever bracket. Remove pivot pin and clutch hand lever from bracket.
 - d. Reroute clutch cable to the inside of the handlebars as shown in Figure 1 and reconnect clutch cable to clutch lever by reversing Step c.
 - e. See Figure 2. Turn cable adjuster away from jam nut until slack is eliminated at hand lever. Pull clutch cable ferrule away from clutch lever bracket to check free play. Turn cable adjuster as necessary to obtain 1/16 to 1/8 inch (1.6-3.2 mm) free play between end of cable ferrule and clutch lever bracket as shown in Figure 2.

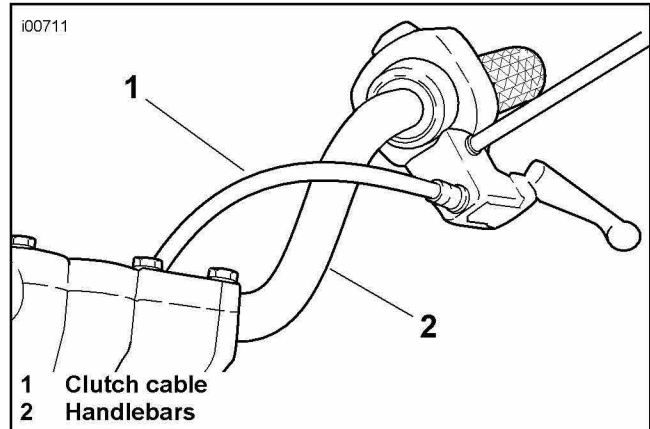


Figure 1. New Clutch Cable Routing

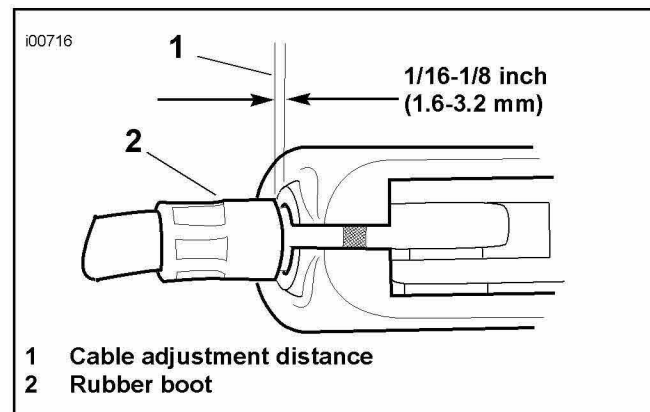


Figure 2. Clutch Cable Adjustment

- f. Hold adjuster with 1/2 inch wrench. Using 9/16 inch wrench, tighten jam nut against cable adjuster. Cover cable adjuster mechanism with rubber boot (2).
2. **For handlebar styles other than buckhorn pullbacks,** see Figure 3. Use wireform (1) included in kit to secure throttle cables to upper mounting clamp as shown in illustration (bottom view). Place chrome washer from kit (Item 6 on Service Parts Page 4) between wireform and mounting clamp nut.
For buckhorn-style pullback handlebars, see Figure 4. Use wireform (1) included in kit to secure throttle cables to upper fork triple clamp as shown in illustration (top view). For all other models, use sockethead screw (8), stock washer (2) and washer (6) contained in kit, and place washer under wireform.

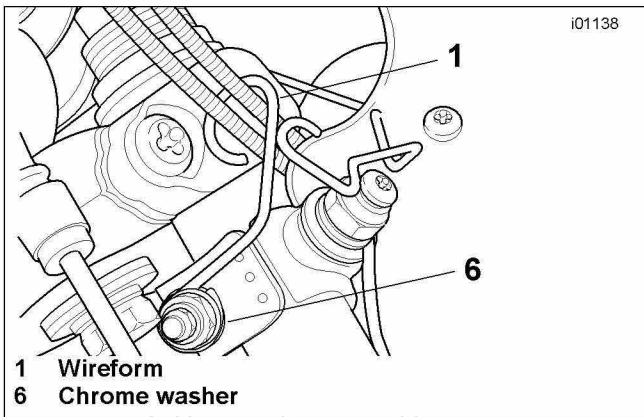


Figure 3. Throttle Cable Attachment
All handlebars except buckhorn-style

⚠ WARNING

After securing throttle cable with wireform, check that throttle control opens and closes smoothly when handlebars are turned fully to left and right fork stops. Sticking throttle response could result in loss of control of vehicle and death or serious injury.

3. See Service Parts Illustration. Assemble mounting hardware for lower windshield mounting as shown. For models equipped with passing lamps, install the lower mounting clamp approximately 1-3/4 inch above the lower fork triple clamp with the clamp nuts facing toward the rear of the motorcycle. For models not equipped with passing lamps, install the lower mounting clamp approximately 1/2 inch above the lower fork triple clamp with clamp nuts facing toward the rear of the motorcycle. Tighten clamp nuts to 10 ft-lbs (14 Nm). Be sure the clamp does not rotate during tightening (the mounting bushing must be parallel to the windshield brackets). Tighten buttonhead screws (4) to 15 ft-lbs (20 Nm).
4. See Service Parts illustration. Assemble hardware for upper windshield mounting as shown in illustration. Leave clamp nuts loose so clamps can be slid up and down fork tubes to allow for proper adjustment.
5. Hook the two lower windshield assembly jaws into the grooves of the lower bushings then slide the upper clamp assemblies into place until the upper bushings firmly fit into the upper windshield jaws.
6. With windshield in place, tighten upper clamp nuts to 10 ft-lbs (14 Nm). Be sure the clamp does not rotate during tightening (the mounting bushing must be parallel to the windshield brackets).

NOTE

Inspect windshield for proper adjustment in relation to the headlamp opening. If necessary, adjust the mounting clamps up or down for proper headlamp to windshield relationship.

⚠ WARNING

Inspect windshield upon completion of installation. Be sure windshield mounting does not restrict full left or full right movement of front fork assembly. Restricted movement could affect handling, resulting in death or serious injury. If restriction does occur, adjust windshield as needed until proper clearance is obtained. Have experienced Harley-Davidson service personnel correct any problems before riding with this accessory installed.

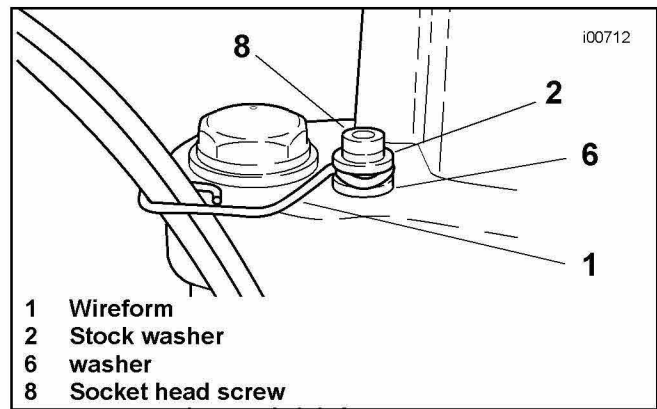


Figure 4. Throttle Cable Attachment
Buckhorn-style pullback handlebars

⚠ WARNING

Check mounting hardware periodically. Never ride with loose mounts. A loose mounting causes extra stress on all other mounts, as well as the windshield itself, and could result in premature failure of components allowing the windshield to detach and startle the rider. This could cause loss of control and death or serious injury.

CAUTION

Do not clean Lexan® polycarbonate in hot sun or high temperature. Powdered, abrasive or alkaline cleanser will damage the windshield. Never scrape the windshield with a razor blade or other sharp instruments because permanent damage will result.

Sunlight reflections off of the inside curvature of a windshield can, at certain times of the day, cause extreme heat build-up on motorcycle instruments. Exercise care in parking. Park facing the sun, place an opaque object over the instruments, or adjust the windshield to avoid reflections.

Harley-Davidson windshields are made of Lexan®. Lexan® is a more durable and distortion-resistant material than other types of motorcycle windshield material, but still requires attention and care to maintain.

- Do not use liquid windshield “protectors” on your windshield. Although they may work well on automobile safety glass, Harley-Davidson cannot ensure the results when used on Lexan® Harley-Davidson windshields. If you want to use a windshield protectant on your windshield, try Harley Glaze Polish and Sealant® #99701-84, or Novus Plastic Cleaner Protectant #99837-94T.
- Do not use benzine, paint thinner, gasoline, or other types of harsh cleaning agents on windshield. They will damage the windshield surface.
- Do not use benzine, paint thinner, gasoline, lubricants (including Armorall), or other cleaning agents on the rubber bushings. They will damage the bushing surfaces.

NOTE

Covering the windshield with a clean, wet cloth for approximately 15 minutes before washing will make dried bug removal easier.

Special Care Instructions

The 100th Anniversary Medallion is chrome plated, with paint filled accents and a special hologram surface on the Harley-Davidson "Bar and Shield".

CAUTION

To prevent damage to the medallion surface, **DO NOT** use detergents, chemical solvents, polishes or abrasive cleaning agents.

To keep this surface in best condition, lightly wipe with a Harley-Davidson Micro Fiber cloth, part number 94663-02, using clear water or a mild Harley-Davidson cleaner such as:

- Sunwash (part number 94659-98),
- Bug Remover (part number 94657-98) or
- Harley Gloss (part number 94627-98).

NOTE

These cleaners are available separately or as part of the Harley Care Starter Kit, part number 94671-99 from your Harley Davidson Dealer.



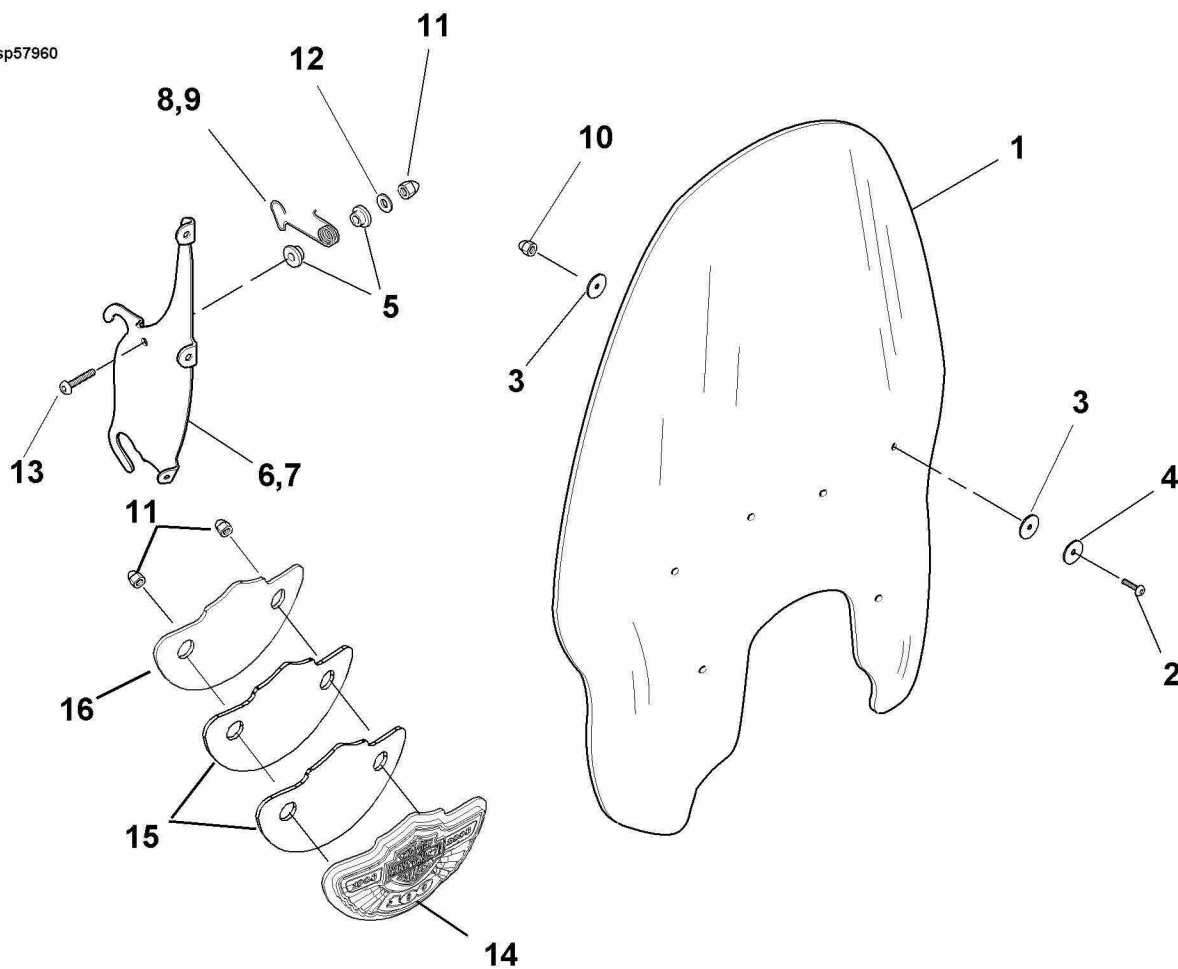
Service Parts

Part No. 57904-02

Date 6/04

100th Anniversary. Windshield Kit

sp57960



Item Description

1	Windshield
2	Buttonhead screws, chrn w/patch (4)
3	Washers, rubber (8)
4	Washers, chrome (4)
5	Nylon bushings (4)
6	Bracket, right
7	Bracket, left
8	Wireform, left

Part No.

Not Sold
94639-99
57964-97
6352
58272-95
57963-97
57962-97
58579-96

Item Description

9	Wireform, right
10	Acorn nuts 5/16-24 (4)
11	Acorn nuts, 1/4-20 (4)
12	Flatwashers (2)
13	Screws, buttonhead chrome (2)
14	Emblem and trim, outer
15	Tape (2)
16	Emblem trim, inner

Part No.

58580-96
94007-90T
94004-90T
6703
94426-95
Not Sold
14069-02
Not Sold



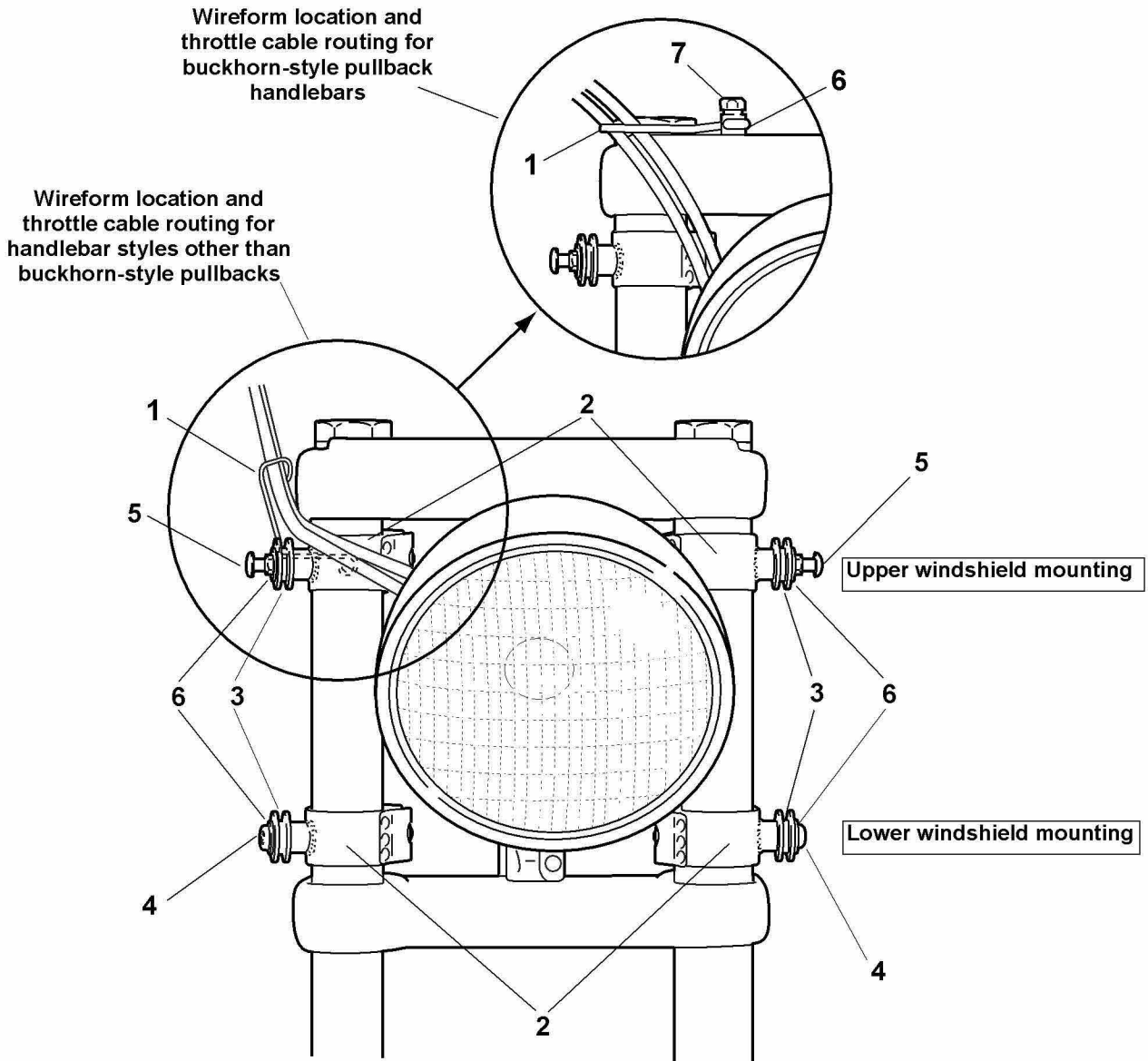
Service Parts

Part No. 58164-96A

Date 6/04

Windshield Docking Hardware Kit

sp58034-3a



Hardware kit 58164-96A:

Item	Description	Part No.	Item	Description	Part No.
1	Wireform	58558-97	6	Flatwasher, chrome (5) (use with wireform, item 1)	94066-90T
2	Mounting clamp (4)	58124-96	7	Sockethead screw, 5/16-18 x 1.25 long	3210
3	Bushings (4)	67621-94			
4	Buttonhead screw (2), 5/16-24 x 5/8 long	94468-94T			
5	Mushroom fastener (2)	58172-96			