



# INSTRUCTIONS

-J02201

REV. 8-10-2004

Kit Number 58261-02

## 100th ANNIVERSARY DETACHABLE WINDSHIELD/DOCKING HARDWARE KIT

### General

The 100th Anniversary Detachable Windshield/Docking Hardware Kit is a standard height clear windshield assembly for 1988 and later Harley-Davidson® XL, FXR and FXD models equipped with 39mm front forks, except FXLR models.

**Kit 58164-96A** is the docking hardware required to mount the windshield.

See the Service Parts illustrations for kit contents.

### WARNING

The rider's safety depends upon the correct installation of this kit. If the procedure is not within your capabilities or you do not have the correct tools, have a Harley-Davidson dealer perform the installation. Improper installation of this kit could result in death or serious injury. (00308a)

### NOTE

This instruction sheet references Service Manual instructions. A Service Manual for your model motorcycle is required for this installation and is available from any Harley-Davidson dealer.

### Installation

**Models equipped with fork mounted turn signals:** If turn signals are not mounted on the upper fork bracket, start with *Install the Windshield*.

**Models with turn signals mounted on the upper fork bracket:** The turn signals must be relocated to the lower fork bracket. To relocate the turn signals, use Directional Relocation Kit (Part No. 72389-96). Refer to the instruction sheet provided with the kit for proper wiring procedure, then go to the windshield installation on this instruction sheet.

### Install the Windshield

### NOTE

Cover gas tank, front fender and headlamp to prevent scratches before beginning installation. Be sure the windshield assembly does not contact chrome or painted parts. Contact will cause scratches.

1. See Figure 1. Relocate clutch cable to the inside of the handlebars as shown in illustration as follows:
  - a. Slide rubber boot off cable adjuster. Adjuster is located halfway along clutch cable by the frame downtube.
  - b. Holding cable adjuster with 1/2 inch wrench, loosen jam nut using a 9/16 inch wrench. Back jam nut away from cable adjuster. Move adjuster toward jam nut to introduce a large amount of free play at the hand lever.
  - c. Remove small snap ring from pivot-pin groove at bottom of clutch lever bracket. Remove pivot pin and clutch hand lever from bracket.

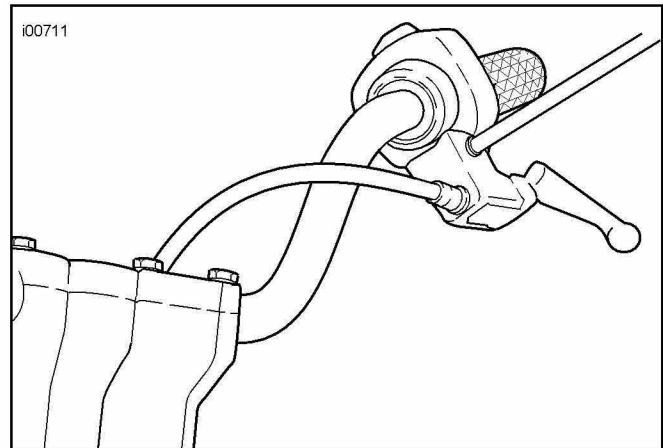


Figure 1. New Clutch Cable Routing

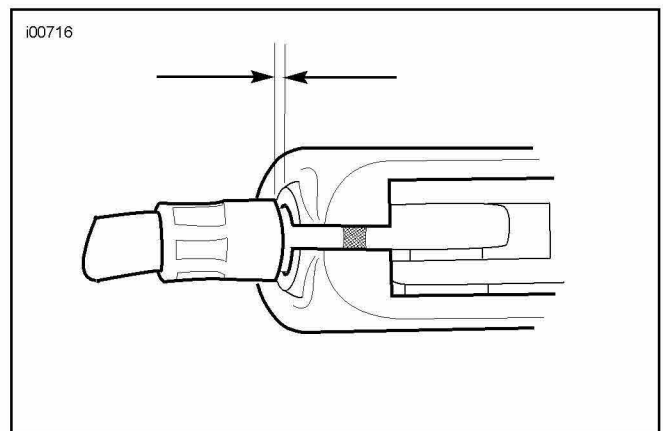


Figure 2. 1/16-1/8 inch (1.6-3.2 mm) Clutch Cable Free Play

- d. Route clutch cable to the inside of the handlebars and connect clutch cable to clutch lever.
- e. See Figure 2. Turn cable adjuster away from jam nut until slack is eliminated at hand lever. Pull clutch cable ferrule away from clutch lever bracket to check free play. Turn cable adjuster as necessary to obtain 1/16 to 1/8 inch (1.6-3.2 mm) free play between end of cable ferrule and clutch lever bracket.
- f. Hold adjuster with 1/2 inch wrench. Using 9/16 inch wrench, tighten jam nut against cable adjuster. Cover cable adjuster mechanism with rubber boot.

2. **For handlebar styles other than buckhorn pullbacks:** See Figure 3. Use wireform (1) included in kit to secure throttle cables to upper mounting clamp as shown in illustration (bottom view). Place chrome washer from kit (Item 6 on Service Parts Page 4) between wireform and mounting clamp nut.

**For buckhorn-style pullback handlebars:** See Figure 4. Use wireform (1) included in kit to secure throttle cables to upper fork triple clamp as shown in illustration (top view).

**⚠WARNING**

After securing throttle cable with wireform, check that throttle control opens and closes smoothly when handlebars are turned fully to left and right fork stops. Sticking throttle response could result in loss of control of vehicle and death or serious injury.

3. See Service Parts illustrations. Assemble mounting hardware for lower windshield mounting.

**For models equipped with passing lamps:** Install the lower mounting clamp approximately 1-3/4 inch above the lower fork triple clamp with the clamp nuts facing the rear.

**For models not equipped with passing lamps:** Install the lower mounting clamp approximately 1/2 inch above the lower fork triple clamp with clamp nuts facing the rear.

Tighten clamp nuts to 10 ft-lbs (14 Nm). Be sure the clamp does not rotate during tightening and the mounting bushing is parallel to the windshield brackets. Tighten buttonhead screws (4) to 15 ft-lbs (20 Nm).

4. See Service Parts illustration. Assemble hardware for upper windshield mounting. Leave clamp nuts loose so clamps can be slid up and down fork tubes for adjustment.
5. Hook the two lower windshield assembly jaws into the grooves of the lower bushings then slide the upper clamp assemblies into place until the upper bushings firmly fit into the upper windshield jaws.
6. With windshield in place, tighten upper clamp nuts to 10 ft-lbs (14 Nm). Be sure the clamp does not rotate during tightening and the mounting bushing is parallel to the windshield brackets.

**NOTE**

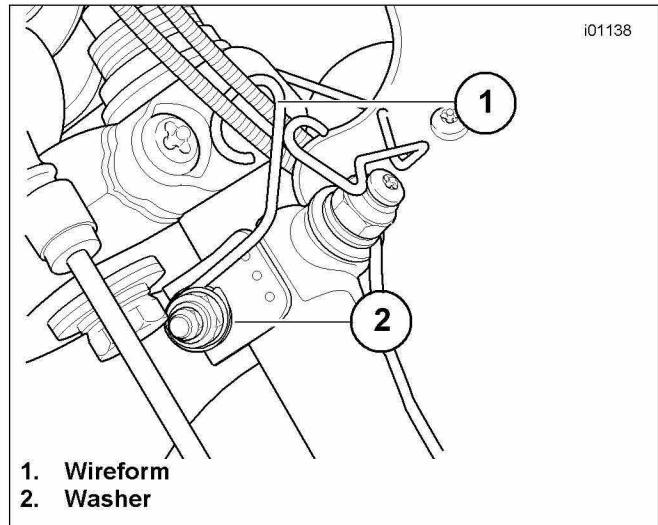
Inspect windshield for proper adjustment in relation to the headlamp opening. If necessary, adjust the mounting clamps up or down for proper headlamp to windshield relationship.

**⚠WARNING**

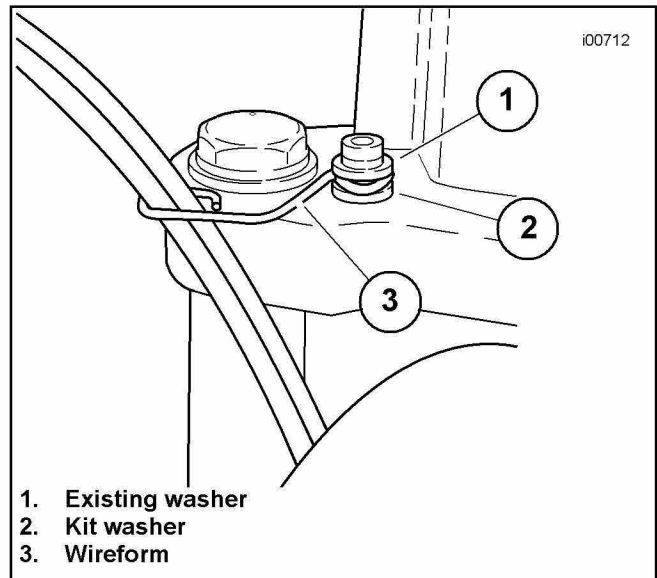
Inspect windshield upon completion of installation. Be sure windshield mounting does not restrict full left or full right movement of front fork assembly. Restricted movement could affect handling, resulting in death or serious injury. If restriction does occur, adjust windshield as needed until proper clearance is obtained.

**⚠WARNING**

Check mounting hardware periodically. Never ride with loose mounts. A loose mounting causes extra stress on all other mounts, as well as the windshield itself, and could result in premature failure of components allowing the windshield to detach and startle the rider. This could cause loss of control and death or serious injury.



**Figure 3. Throttle Cable Attachment (all handlebars except buckhorn)**



**Figure 4. Throttle Cable Attachment (buckhorn pullback handlebars)**

## Care and Cleaning

### NOTE

Sunlight reflections off of the inside curvature of a windshield can, at certain times of the day, cause extreme heat build-up on motorcycle instruments. Exercise care in parking. Park facing the sun, place an opaque object over the instruments, or adjust the windshield to avoid reflections.

### CAUTION

Do not clean Lexan® polycarbonate in hot sun or high temperature. Powdered, abrasive or alkaline cleanser will damage the windshield. Never scrape the windshield with a razor blade or other sharp instruments because permanent damage will result.

### CAUTION

Harley-Davidson windshields are made of Lexan. Lexan is a more durable and distortion-resistant material than other types of motorcycle windshield material, but still requires attention and care to maintain. Failure to maintain Lexan properly can result in damage to the windshield. (00230a)

### CAUTION

Do not use harsh chemicals including rain sheeting products on Harley-Davidson windshields. They can cause dulling or hazing. If you want to use a windshield protectant on your windshield, try Harley Glaze Polish and Sealant. (00231a)

### CAUTION

Do not use benzine, paint thinner, gasoline or any other type of harsh cleaner on the windshield. Doing so will damage the windshield surface. (00232a)

- Do not use benzine, paint thinner, gasoline, lubricants (including Armorall®), or other cleaning agents on the rubber bushings. They will damage the bushing surfaces.

### NOTE

Covering the windshield with a clean, wet cloth for about 15 minutes before washing will make dried bug removal easier.

## Special Care Instructions

The 100th Anniversary Medallion is chrome plated, with paint filled accents and a special hologram surface on the Harley-Davidson "Bar and Shield".

### CAUTION

To prevent damage to the medallion surface, do not use any detergents, chemical solvents, polishes or abrasive cleaning agents.

To keep this surface in best condition, lightly wipe with a Harley-Davidson Micro Fiber cloth, part number 94663-02, using clear water or a mild Harley-Davidson cleaner such as:

- Sunwash (part number 94659-98),
- Bug Remover (part number 94657-98) or
- Harley Gloss (part number 94627-98).

### NOTE

These cleaners are available separately or as part of the Harley Care Starter Kit, part number 94671-99 from your Harley Davidson Dealer.



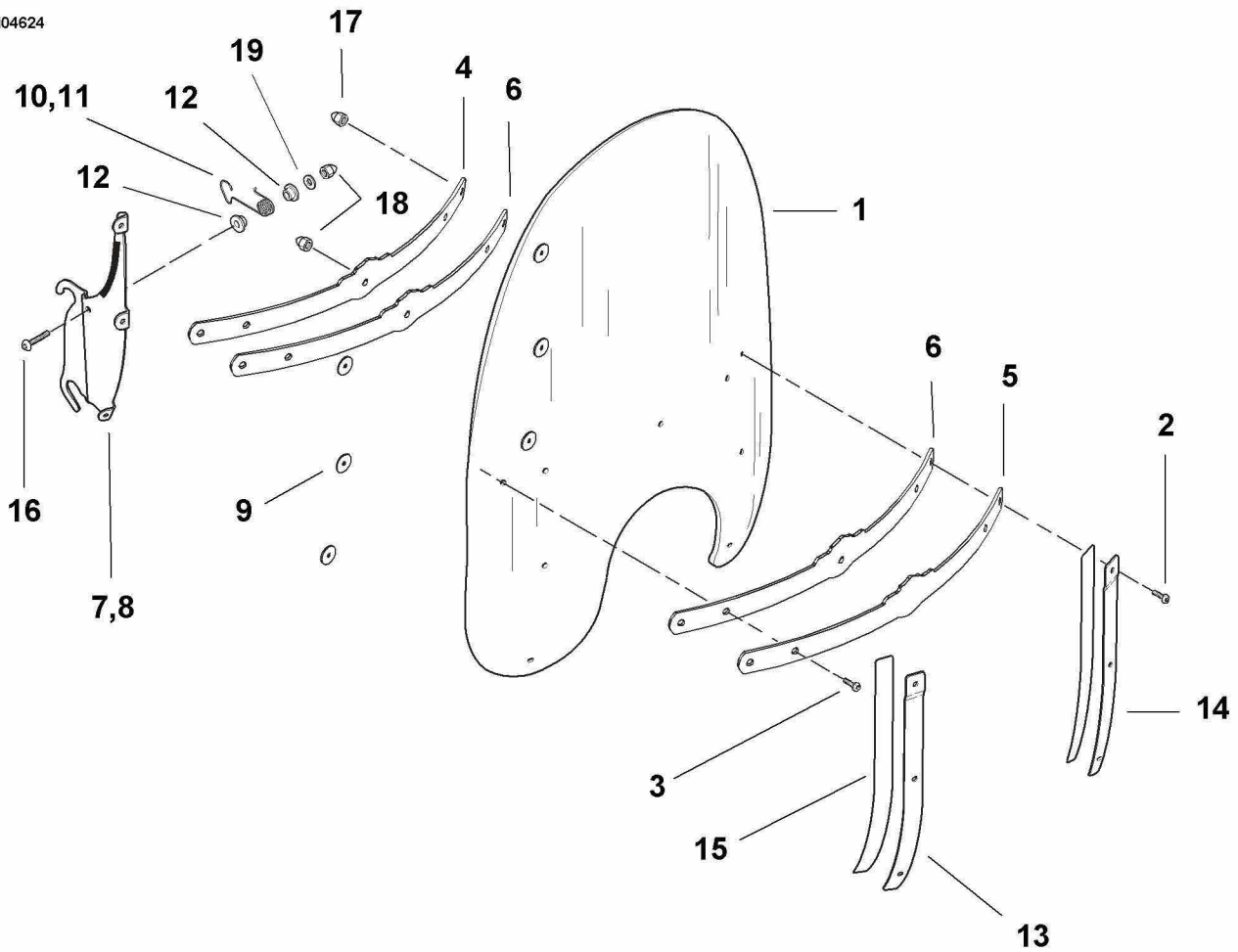
# Service Parts

Part No. 58261-02

Date 8/04

100th Anniversary. Windshield Kit

i04624



Item	Description	Part No.
1	Windshields	58061-96
2	Panhead screws, Torx (2)	2452
3	Panhead screws, Torx (6)	2921
4	Inner windshield brace	58263-02
5	Outer windshield brace w/ emblem	58267-02
6	Windshield brace tape (2)	58279-02
7	Windshield bracket, left	58116-96
8	Windshield bracket, right	58122-96
9	Washers (6)	57973-04
10	Windshield retainer, left	58259-95I
11	Windshield retainer, right	58266-95
12	Nylon bushings (4)	58272-95
13	Brace, right	58406-75A
14	Brace, left	58408-75A
15	Windshield brace tape (2)	58417-77
16	Buttonhead screws (2)	94426-95
17	Acorn nuts (8)	7651
18	Acorn nuts, 1/4-20 (3)	94004-90T
19	Flat washers, 1/4 (2)	6703



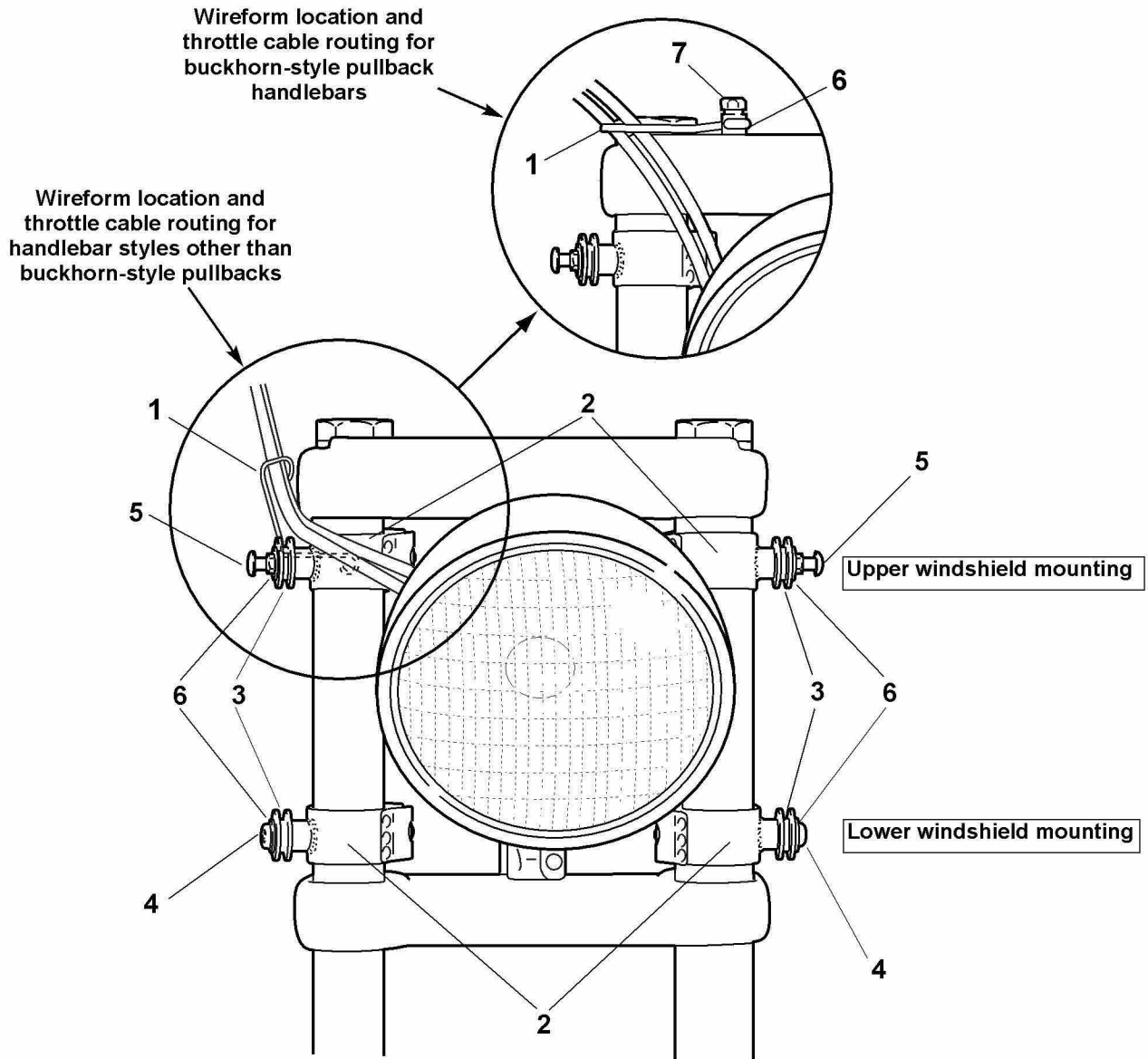
# Service Parts

Part No. 58164-96A

Date 8/04

Windshield Docking Hardware Kit

sp58034-3a



### Hardware kit 58164-96A:

Item	Description (Qty)	Part No.
1	Wireform	58558-97
2	Mounting clamp (4)	58124-96
3	Bushings (4)	67621-94
4	Buttonhead screw (2), 5/16-24 x 5/8 long	94468-94T
5	Mushroom fastener (2)	58172-96
6	Flat washer, chrome (5) (use with wireform, item 1)	94066-90T
7	Sockethead screw, 5/16-18 x 1.25 long	3210