



INSTRUCTIONS

-J02196

REV. 01-11-2005

Kit Number 27007-00

SCREAMIN' EAGLE® STREET-LEGAL BIG BORE 44 mm CV CARB KIT

General

This kit fits all carbureted 2001-2002 Twin Cam 1450 engines and 2003 carbureted Touring 1450 engines.

See *Service Parts illustration for kit contents.*

Intake Manifold Kit for Twin Cam 1450 Engines part number 29635-99 **must** be used with this carburetor.

Carburetor Rebuild kit for Screamin' Eagle Big Bore 44 mm CV carburetor, part number 27554-99, can be used with this carburetor kit.

⚠ WARNING

The rider's safety depends upon the correct installation of this kit. Use the appropriate service manual procedures. If the procedure is not within your capabilities or you do not have the correct tools, have a Harley-Davidson dealer perform the installation. Improper installation of this kit could result in death or serious injury. (00333a)

NOTE

Refer to applicable *Service Manual* for detailed instructions on how to remove necessary components. *Service Manuals* are available from your Harley-Davidson Dealer.

NOTE

This carburetor kit is intended for High Performance applications only. This engine-related performance part is legal for sale or use in California on pollution-controlled motor vehicles. Engine related performance parts are intended for the experienced rider only.

NOTE

The Product Information Label contained in this kit is required in the state of California only. This label is required to aid in passing the California Smog Check Program. Place the Information Label on the right side of the frame directly beneath the VIN sticker. Do not place the label on motorcycles other than those specified in the Instruction Sheet.

⚠ WARNING

To prevent accidental vehicle start-up, which could cause death or serious injury, disconnect negative (-) battery cable before proceeding. (00048a)

Installation

1. Disconnect the battery cables, negative (-) cable first.
2. Remove the stock air cleaner, carburetor, and manifold according to the applicable *Service Manual* instructions.
3. Remove the choke cable from the stock carburetor and

install the cable onto the SE Big Bore 44mm CV carburetor.

4. Install Screamin' Eagle Intake Manifold kit 29635-99. Refer to the Instruction Sheet included with the manifold kit.

NOTE

The fit between the carburetor and the intake-manifold seal ring is tight. Apply liquid dish soap or tire-mounting lube to the mating surfaces, carburetor body, and seal ring during assembly to reduce surface friction.

5. Refer to the applicable *Service Manual*. Insert the SE Big Bore 44mm CV carburetor into the manifold. As the carburetor is being inserted, check that the choke cable is not being kinked.
6. Attach the fuel petcock vacuum line to the fitting on the carburetor.
7. On California models, remove the shipping cap from the purge nipple on the carburetor to fasten the evaporative-emission-system purge hose over the nipple.
8. Use hose clamp to fasten the fuel hose to the carburetor fuel nipple.

NOTE

Refer to the applicable Service Manual and ensure that the throttle cables are of the correct length and are routed correctly.

⚠ WARNING

If the cables are not of the correct length or routed correctly, they could interfere with the operation of the motorcycle. This could cause loss of control and could cause death or serious injury.

9. Install the stock air-cleaner assembly, making sure the evaporative emission system clean-air inlet hose is attached to the backplate on California models.

⚠ WARNING

Connect positive (+) battery cable first. If positive (+) cable should contact ground with negative (-) cable connected, the resulting sparks can cause a battery explosion, which could result in death or serious injury. (00068a)

10. Connect the battery cables, Positive (+) cable first.
11. Start the motorcycle and check engine performance.
12. After the engine is fully warmed up, set the idle speed to 1000 – 1050 RPM.



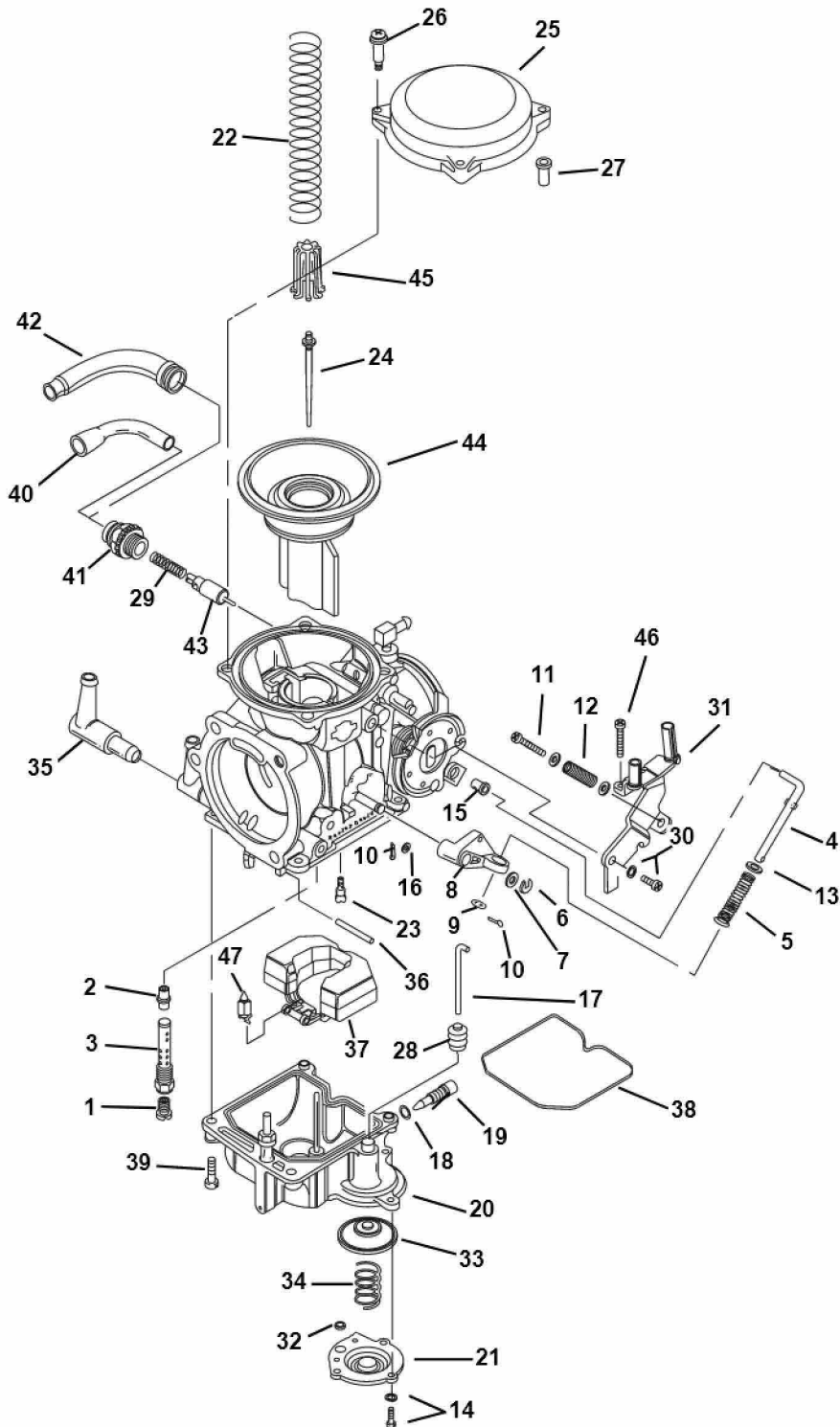
Service Parts

Part No. 27007-00

Date 01/05

Big Bore 44 mm CV Carburetor Kit

102373





Service Parts

Part No. 27007-00

Date 01/05

Big Bore 44 mm CV Carburetor Kit

ITEM	DESCRIPTION	PART NUMBER	ITEM	DESCRIPTION	PART NUMBER
1	Main Jet	27105-88	26*	Screw, Top (3)	27262-96
2	Needle Jet	27725-99	27	Collar, Carburetor Top	27263-96
3	Needle Jet Holder	27101-88	28*	Boot, Accelerator Pump	27311-76
4	Rod	27122-89	29	Spring	27315-88A
5	Spring	27123-89A	30*	Screw	27317-88
6	E-Clip	27124-89	31	Bracket, Throttle Cables	27339-90
7	Washer	27125-89	32*	O-Ring (2)	27360-76
8	Lever	27126-89	33*	Diaphragm, Accelerator Pump	27361-76A
9	Washer	27127-89	34*	Spring, Diaphragm	27362-76
10	Pin (2)	27128-89	35	Fitting (L-Joint)	27371-76
11	Idle Screw	27130-90	36	Pin	27575-88A
12	Spring	27136-90	37	Float	27576-92
13	Washer	27137-81	38*	O-Ring, Float Chamber	27577-92
14*	Screw w/Washer (3)	27146-89	39*	Screw (4)	27579-88A
15	Collar	27147-89	40	Cable Guide	27580-88
16	Washer	27148-89	41	Starter Cap	27581-88
17	Rod	27156-89	42	Cable sealing Cap	27582-88
18	O-Ring	27127-89	43	Starter Valve	27583-88
19	Drain Screw	27158-89	44*	Vacuum Piston	27552-99
20	Float Chamber Assembly	27287-98	45	Spring Seat	27586-88
21	Pump Housing	27260-00	46	Screw	27587-88
22	Spring	27162-89	47	Valve w/Clip	27886-78A
23	Slow Jet	27165-90	48	Product Information Label, 44 CV Carburetor (not shown)	Not sold Separately
24	Jet Needle	27025-01			9946
25	Top, Carburetor	27261-96	49	Clamp, hose (not shown)	

Note: Items marked with a (*) and in bold are included in the Carburetor Rebuild Kit part number 27554-99.