



INSTRUCTIONS

-J02195

REV. 5-15-01

Kit Number 68471-94C

REAR TURN SIGNAL RELOCATION KIT

General

This kit is designed for installation on 1994 and later XL motorcycles. This kit must be used when saddlebag, Part No. 91010-91A or 91004-94, is installed on vehicle. For 1997 and earlier models that have a fender brace installed, follow 1998 model instructions.

NOTE

A pick tool (Snap-on TT600-3) will be required for 1996 and later models for removing and reinstalling a multilock amp connector.

Kit Contents:

Qty	Description	Part No.
2	Buttonhead screw, 5/16-18 x 1-5/8"	4182
2	Buttonhead screw, 5/16-18 x 1-3/4"	4183
2	Spacer, thick	5792
4	Spacer, thin	6109
2	Hex cap bolt, 5/16-24 x 4-1/2"	4140
2	Locknut	7725
2	Relocation pad	68472-94
2	Secondary lock	72152-94
2	Hex cap bolt, 5/16-18 x 4-1/4"	4251
2	Bushing	61778-98
2	Stud, mounting	68044-02
2	Screw, hex cap	3787

NOTE

A Service Manual for your vehicle is available from your Harley-Davidson Dealer.

Installation - Hugger Models Only (1994-1997)

WARNING

To perform the following steps for Hugger Models only, fender and frame must be sufficiently supported, as both shocks will need to be removed at the same time. An improperly supported vehicle could result in death or serious injury.

WARNING

A Service Manual is needed to install this kit. The rider's safety depends upon the correct installation of this kit. If the procedure is not within your capabilities or you do not have the correct tools, have your Harley-Davidson Dealer perform the installation. Improper installation of this kit could result in death or serious injury.

WARNING

To protect against shock and accidental start-up of vehicle, disconnect the battery cables, negative cable first, before proceeding. Inadequate safety precautions could result in death or serious injury.

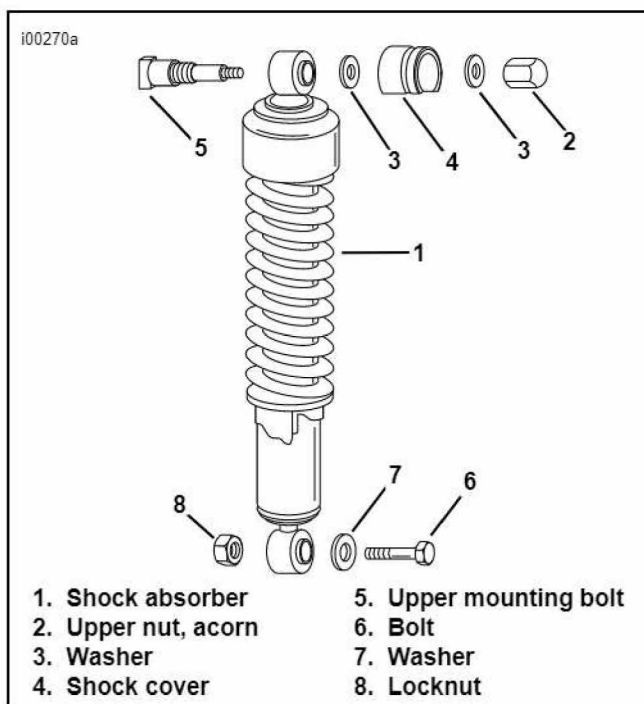


Figure 1. Shock Absorber Removal Hugger Models Only

WARNING

Always disconnect the negative battery cable first. If the positive battery cable should contact ground with the negative cable installed, the resulting sparks may cause a battery explosion which could result in death or serious injury.

1. Remove seat, sissy bar and sideplate, if applicable. Retain hardware. Disconnect battery, negative cable first.
2. Properly support motorcycle under frame to prepare for removal of right and left shocks.
3. Remove rear buttonhead screw on each side of fender.
4. See Figure 1. With rear fender and frame securely supported, remove left and right shocks by removing upper nut (2), washer(s) (3) and shock cover (4). Remove bolt (6), washer (7) and locknut (8) at lower shock mount. Remove shock.
5. See Figure 2. Install long 4-1/2" bolt (1) from kit, from inside of fender out through rear holes where buttonhead screws were removed in Step 3.
6. See Figure 1. Reinstall shocks using original hardware. Torque acorn nut (2) to 21-35 ft-lbs (28.5-47.5 Nm). Torque locknut (8) to 30-50 ft-lbs (40.7-67.8 Nm).
7. Continue on to the next section.

2. See Figure 2. Disconnect turn signal electrical system by removing connector from T-stud on frame.

NOTE

Before performing the next step, notice location of wires in contact so they can be reinstalled in the same positions later.

3. See Figure 2. **On 1994-1995 models**, with 2-pin connectors, separate connector halves. Remove orange secondary lock (14) from turn signal connector (13). Remove contact by gently pulling wires (one at a time) away from contact, while releasing small locking tabs on inside of connector, using a small flat blade screwdriver. Pull wires back through frame.

See Figure 3. **On 1996-1998 models** with multilock amp connectors, remove the connector from the retaining device according to Service Manual instructions. **On 1999 and later models**, it is necessary to remove the taillight lens to access the multilock amp connector.

NOTE

Perform the following procedures one side at a time until instructed to go to opposite side of vehicle.

4. Remove buttonhead screw(s) and locknut(s) that secure fender support cover to frame. (If you have a Hugger Model with a sissy bar, one of these screws and locknuts may already be removed.) Retain hardware for later reinstallation.
5. Remove nut on inside of fender that secures rear turn signal to fender. Retain nut.
6. **On 1994-1999 models**, remove the rear shock absorber upper acorn nut, washers and shock stud cover. **On 2000 and later models**, remove 1/2-13 hex head screw, washer and shock cover. This will allow you to pull the fender support cover out far enough to access the stud that holds the rear turn signal in place.
7. With a deep well socket, remove rear turn signal stud from fender support cover, and remove rear turn signal. Discard stud.
8. Take note of how rear turn signal wire is routed on inside of fender support cover (for later rerouting) and untape wire from fender support cover.
9. See Figure 2. Using a small piece of tape, tack thick spacer (10) from kit onto frame over hole from which rear turn signal stud was removed.
10. **On 2001 and earlier models**, remove lens from rear turn signal. Remove bulb from rear turn signal. Retain all parts.

CAUTION

Use caution not to scratch chrome surface of turn signal when removing bulb assembly.

On 2002 and later models, remove lens from rear turn signal. Remove bulb from rear turn signal. Gently pry bulb assembly from turn signal housing using a flat blade screwdriver. Retain all parts. Remove and discard hex capscrew from within turn signal housing.

NOTE

On 1994-1997 models, before performing next step, make sure that T-spacer located on inside of fender is still in place.

11. See Figure 2. **On 1994-1997 models**, except Hugger, locate 4-1/2" rear turn signal bolt (1) from kit. Insert bolt, from inside of fender, out through rearmost hole in fender frame. Leave loosely in place.

CAUTION

Use caution not to scratch chrome surface of turn signal housing while drilling out threads.

See Figure 4. **On 1998-2001 models**, drill out threads in turn signal housing using a 13/32" drill bit. Use caution not to scratch chrome surface of turn signal housing. Place thin spacer (7) and bushing (15) on 4-1/4" bolt (1) near threads. Install bolt through turn signal housing. Bushing should be level with inside boss in turn signal housing.

On 2002 and later models, refer to Step 13.

NOTE

Narrow end of relocation pad should point to rear of motorcycle.

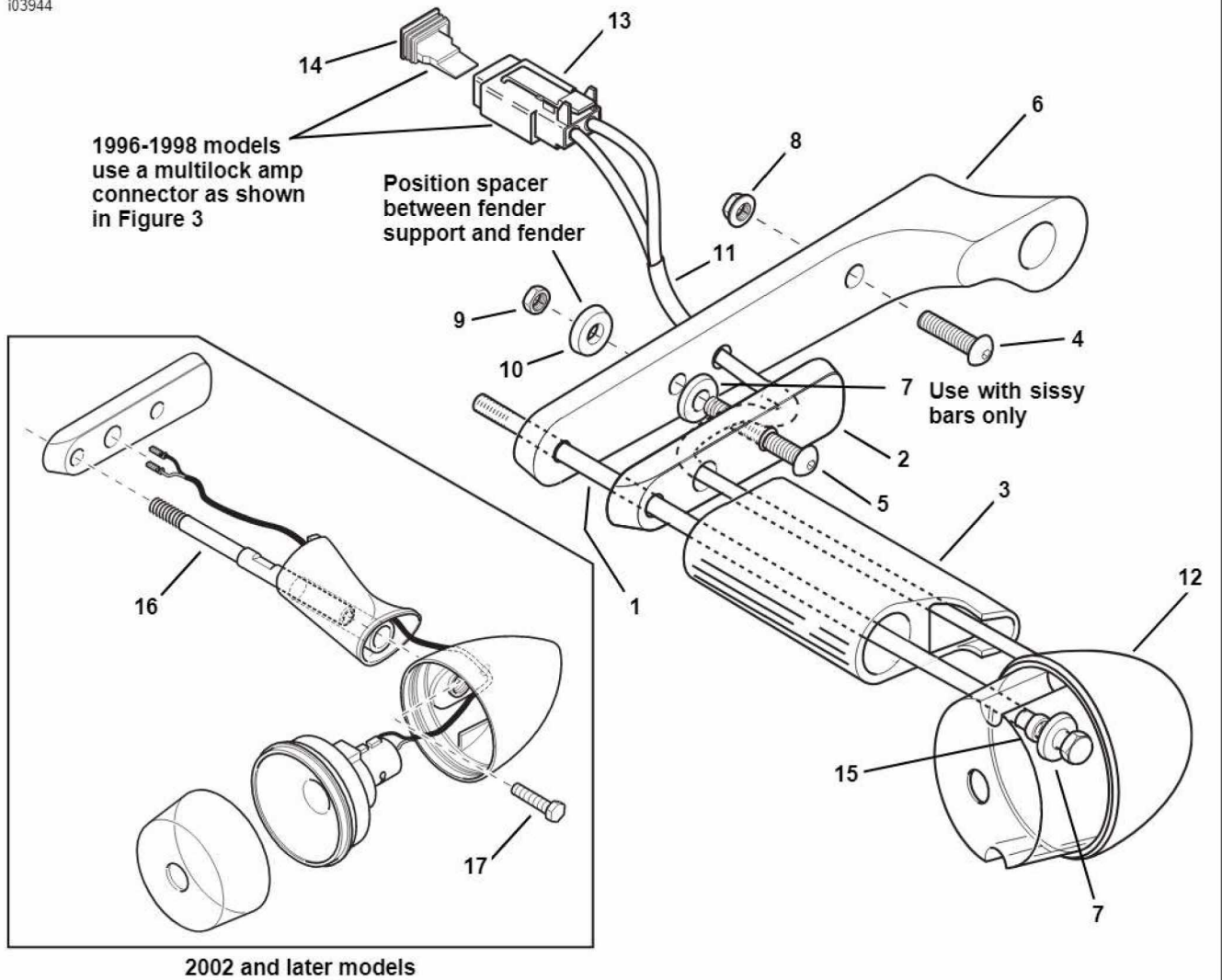
12. **On 2001 and earlier models**, insert wire from rear turn signal through center hole in relocation pad, along channel on the inside of the pad and through third hole from rear in fender support cover. Reroute wire back along inside of fender support cover and retape into place on back of fender support cover.
13. **Non-sissy bar models only.**

- See Figure 2. **On 1994-1997 models**, install rear turn signal with relocation pad and fender support cover onto fender using 4-1/2" bolt (1) inserted through rear of fender in Step 11. Tighten bolt until snug.

See Figure 4. **On 1998 models**, place Loctite #242 (blue) on threads of 4-1/4" bolt (1). Install rear turn signal with relocation pad and fender support cover onto fender using 4-1/4" bolt (1) inserted through turn signal housing in Step 11. Tighten bolt until snug.

See Figure 4. **On 2002 and later models**, insert exterior-threaded end of 4" mounting stud (16) into hole in narrow end of relocation pad (2). Loosely arrange turn signal housing and stalk on mounting stud running the lamp wire through center hole in relocation pad, along channel on the inside of the pad and through third hole from rear in fender support cover. Place Loctite #242 (blue) on exterior threads of mounting stud. Insert mounting stud through fender support cover and into fender support. With a 5/16" box-end wrench on mounting stud flat section, tighten stud into fender support to 12 ft-lbs (16.3 Nm). Install hex capscrew (17) inside turn signal housing and tighten to 9 ft-lbs (12 Nm) into mounting stud (16). Firmly pull lamp wire through fender support. Coat the rubber bulb assembly isolator with a suitable lubricant. This will ease installation of the assembly into the turn signal housing. Press light bulb assembly evenly into turn signal housing until seated below lens cover groove.

- Install 1-5/8" bolt (5) from kit through forwardmost hole of relocation pad (2), fender support cover (6), thick spacer (10) (taped to frame) and fender support. Reinstall using original nut (9) removed in Step 5.



- | | |
|-------------------------------|--|
| 1. Bolt, 4-1/4" course thread | 10. Spacer, thick |
| 2. Relocation pad | 11. Rear turn signal wire |
| 3. Rear turn signal stalk | 12. Rear turn signal housing |
| 4. Bolt, existing | 13. 2-pin connector (1994-1995 models) |
| 5. Bolt, 1-5/8" | 14. Secondary lock (1994-1995 models pictured) |
| 6. Fender support cover | 15. Bushing |
| 7. Spacer, thin | 16. Stud, mounting |
| 8. Locknut, existing | 17. Screw, hex cap |
| 9. Locknut, existing | |

Figure 4. Routing Rear Turn Signal Wires and Installing Relocation Pad on 1998 and Later Models

- Reinstall original nut (8) and bolt (4) removed from forwardmost hole in fender support cover (6). Tighten finger tight.

Models with sissy bars.

- See Figure 4. Place fender support cover (6) over fender support. Reinstall sissy bar sideplate over cover and loosely secure using original hardware.
- See Figure 4. Insert 1-5/8" bolt (5) from kit through front hole of relocation pad (2). Place thin spacer (7) over bolt (5) and install pad (2) by inserting bolt (5) through fender support cover (6), thick spacer (10) (taped to frame and fender support). Loosely secure with original nut (9).
- See Figure 2. **On 1994-1997 models**, install turn signal assembly onto pad using 4-1/2" bolt (1) inserted through fender in Step 11. Tighten until just snug.

See Figure 4. **On 1998-2001 models**, install turn signal assembly onto pad using 4-1/4" bolt (1) inserted through turn signal housing in Step 11. Tighten bolt until snug.

See Figure 4. **On 2002 and later models**, insert exterior-threaded end of 4" mounting stud (16) into hole in narrow end of relocation pad (2). Loosely arrange turn signal housing and stalk on mounting stud running the lamp wire through center hole in relocation pad, along channel on the inside of the pad and through third hole from rear in fender support cover. Place Loctite #242 (blue) on exterior threads of mounting stud. Insert mounting stud through fender support cover and into fender support. With a 5/16" box-end wrench on mounting stud flat section, tighten stud into fender support to 12 ft-lbs (16.3 Nm). Install hex capscrew (17) inside turn signal housing and tighten to 9 ft-lbs (12 Nm) into mounting stud (16). Firmly pull lamp wire through fender support. Coat the rubber bulb assembly isolator with a suitable lubricant. This will ease installation of the assembly into the turn signal housing. Press light bulb assembly evenly into turn signal housing until seated below lens cover groove.

14. See Figure 2. **On 1994-1997 models**, tighten 4-1/2" rear turn signal bolt (1) from inside of fender to 12 ft-lbs (16.3 Nm). Install locknut (15) from kit onto bolt at inside of turn signal housing (12). Tighten securely.
On 1998-2001 models, tighten 4-1/4" rear turn signal bolt from inside of turn signal housing to 12 ft-lbs (16.3 Nm).
15. Tighten two buttonhead screws (4 and 5) to 12 ft-lbs (16.3 Nm).
16. Reinstall bulb and rear turn signal lens.
17. Repeat Steps 4-16 for opposite side of vehicle.

18. See Figure 2. **On 1994-1995 models**, reroute rear turn signal wires through frame. Reinsert wires into rubber seal in 2-pin connector (13), making sure wires are in proper location. Push upward until you feel wires snap into place. Gently tug on wires to make sure connection is made. Install new secondary lock (14) from kit onto connector. Reconnect rear turn signal and reinstall onto T-stud on frame..

NOTE

See *Service Manual* for more detailed instructions on installing and removing multilock amp electrical connectors.

On 1996-1998 models, reroute rear turn signal wires through frame.

From the secondary lock side of the connector, insert the terminal into its respective numbered chamber until it snaps in place according to Service Manual instructions. For proper fit, the slot in the terminal must face the tang in the chamber.

Gently tug on wire end to verify that the terminal is locked in place and will not back out of chamber. Rotate the hinged secondary lock inward until tabs fully engage latches on both sides of connector. Insert the socket housing into the pin housing until it snaps into place. Install connector on retaining device either attachment or rosebud clip.

Reconnect rear turn signal and reinstall onto T-stud on frame.

On 1999 and later models, insert connector in terminal block under taillight lens. Reinstall taillight lens.

WARNING

Always connect the positive battery cable first. If the positive cable should contact ground with the negative cable installed, the resulting sparks may cause a battery explosion resulting in personal injury.

19. Reconnect battery (positive cable first) and test rear turn signals for proper operation. Reinstall seat and sissy bar, if applicable.

WARNING

After installing seat, pull upward on front of seat to be sure it is locked in position. If seat is loose, it could shift position during vehicle operation and startle the rider, causing loss of control and personal injury.