



# INSTRUCTIONS

-J01821

REV. 3-1-90

Kit Number 29082-90

## XLH AIR CLEANER FOR 40MM CARB.

This kit is designed to replace the mounting assembly on Sportster (XLH) models 40mm carburetor kit.

### CAUTION

Harley-Davidson® motorcycles equipped with some Screamin' Eagle® high-performance engine parts may not be used on public roads and in some cases must be restricted to closed course competition. This engine related performance part is intended for racing applications and is not legal for sale or use in California on pollution controlled motor vehicles. Engine related performance parts are intended **FOR THE EXPERIENCED RIDER ONLY.**

This kit contains the following:

QTY	Description
1	Air cleaner adapter (Assy)
1	Carburetor gasket
4	Button head screws (w/ Loctite patch)
1	Fitting (crankcase breather hose)
1	O-ring (crankcase breather hose)
1	Hose clamp (crankcase breather hose)

### INSTALLATION

#### NOTE

Refer to applicable Service Manual for detailed instructions to remove necessary components. Service Manuals are available from your Harley-Davidson Dealer.

1. Remove air cleaner assembly.

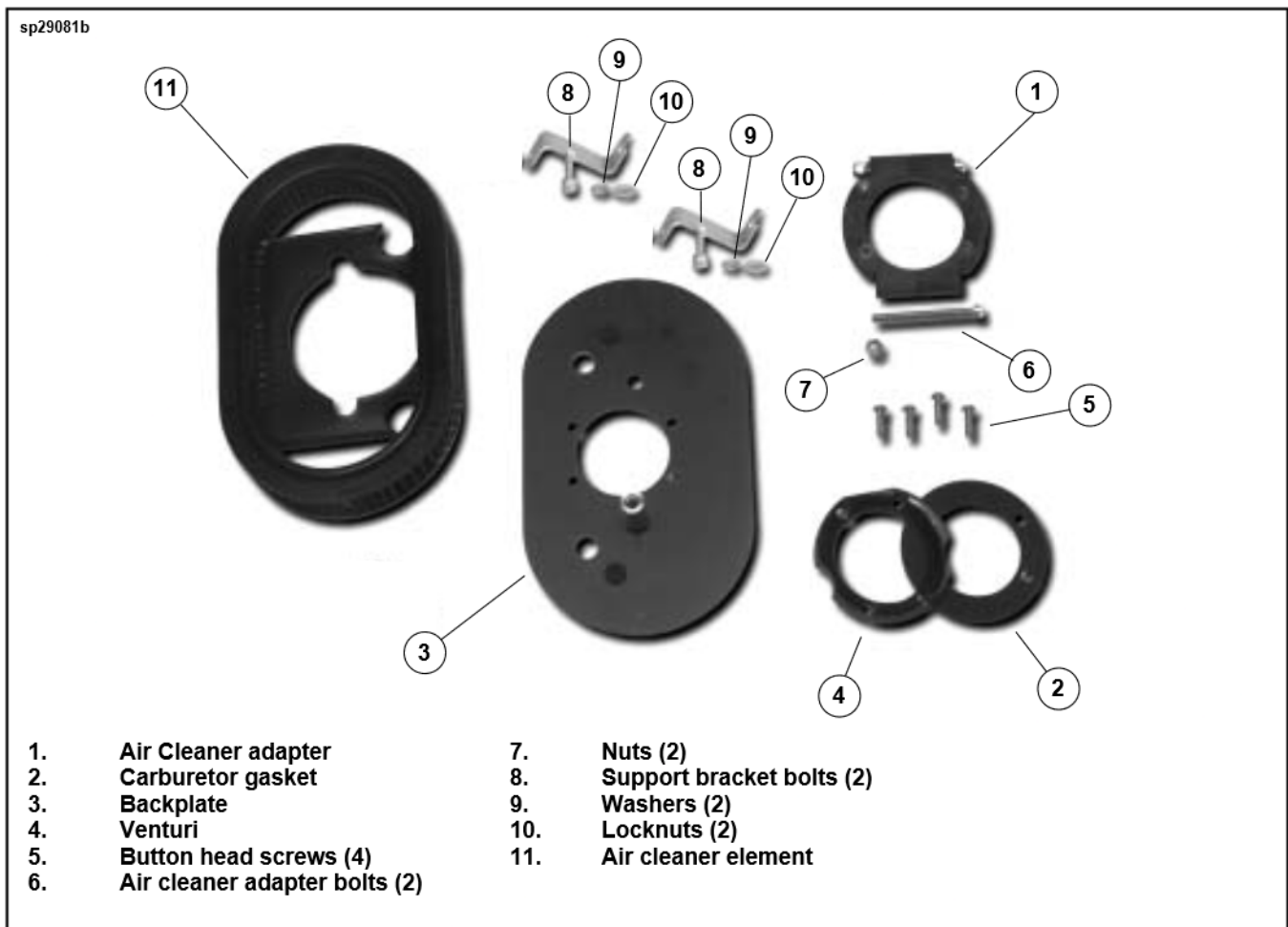
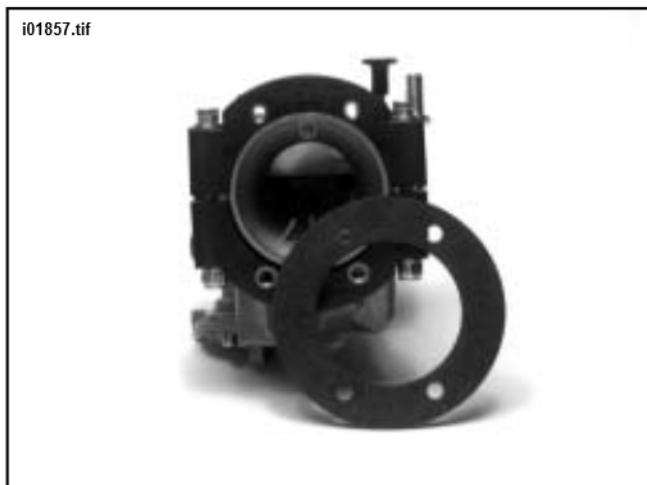


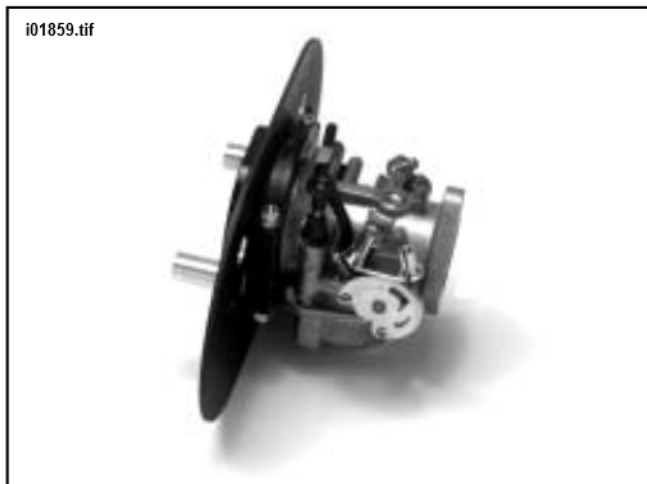
Figure 1. Air Cleaner Assembly

2. Drill a 3/8 in. hole in the backplate, approximately 2 in. from the rear and bottom edge of the backplate. Install the crankcase breather hose fitting and O-ring in the hole. Place hose clamp on breather hose.
3. See Figure 2. Install the air cleaner adapter (1) on the carburetor throat. Do not tighten bolts at this time.



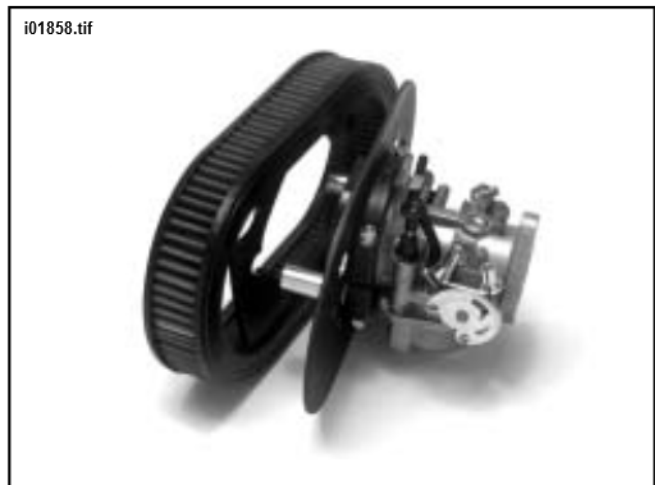
**Figure 2. Air Cleaner Adapter & Carburetor Gasket**

4. See Figure 3. Assemble carburetor gasket (2), backplate (3), and venturi (4) to the air cleaner adapter (1), using the button head screws (5). Use Loctite 271 (red) and tighten the air cleaner adapter bolts (6)/nuts (7).



**Figure 3. Air Cleaner Cover Spacers & Backplate**

5. Install support bracket bolts (8), washers (9) and locknuts (10). Tighten all support bracket bolts.
6. See Figure 4. Place air cleaner element (11) over air cleaner cover spacers. Install air cleaner cover washers and screws. Tighten screws.



**Figure 4. Air Cleaner Element Relationship to Backplate**

#### NOTE

*The air cleaner is pre-oiled and requires no service upon installation. For service interval and procedure see Instructions at end of this Instruction Sheet.*

7. Route the crankcase breather hose to the fitting on the back of the backplate. Slip the hose over the fitting and install the hose clamp.

## AIR CLEANER ELEMENT MAINTENANCE

1. Remove air cleaner cover and inspect cleaner element every 5000 miles, or more often under dusty conditions.

#### CAUTION

**Do not let dirty air filter cleaner/degreaser solution run to inside of filter.**

2. To clean element, remove it and wash it by rolling it in a shallow pan containing a small amount of air filter cleaner/degreaser (no more than 3/4 the depth of filter pleats).
3. Remove element from cleaner and allow five minutes for cleaner to dissolve dirt. From the inside out, rinse the filter with cold water. Shake and allow to air dry. Do not dry with compressed air.
4. Oil element using Air cleaner oil. Apply along the full length of each pleat and allow to set until the element is a uniform color. Allow excess oil to drain off. Install element and cover.