



INSTRUCTIONS

-J01797

2007-09-05

XL SWINGARM AXLE COVER

GENERAL

Kit Number

45293-00, 45328-00

Models

For model fitment information, please see the P&A Retail Catalog or the Parts and Accessories section of www.harley-davidson.com (English only).

Additional Parts Required

▲ WARNING

Rider and passenger safety depend upon the correct installation of this kit. Use the appropriate service manual procedures. If the procedure is not within your capabilities or you do not have the correct tools, have a Harley-Davidson dealer perform the installation. Improper installation of this kit could result in death or serious injury. (00333b)

NOTE

This instruction sheet references Service Manual information. A Service Manual for your model motorcycle is required for this installation and is available from a Harley-Davidson Dealer.

Kit Contents

See Figure 1 and Table 1.

INSTALLATION

1. Support the motorcycle following the instructions in the appropriate Service Manual.
2. Remove right lower shock mount bolt following the instructions in the appropriate Service Manual.
3. See Figure 1. Position right axle cover (2) over swingarm and behind shock.
4. Reposition shock and hardware.
5. Tighten shock mount bolt to 40.7–67.8 N·m (30–50 ft-lbs).

NOTE

Bolt may require slight rotation in order to align flats parallel to ground. This will allow proper orientation of bar and shield logo.

6. Position bolt cover over shock bolt head and lock in place with set screw.

NOTE

Axle cotter pin may need to be aligned to prevent contact with the inside of the cover.

7. Repeat Steps 1-6 for the left cover.



SERVICE PARTS

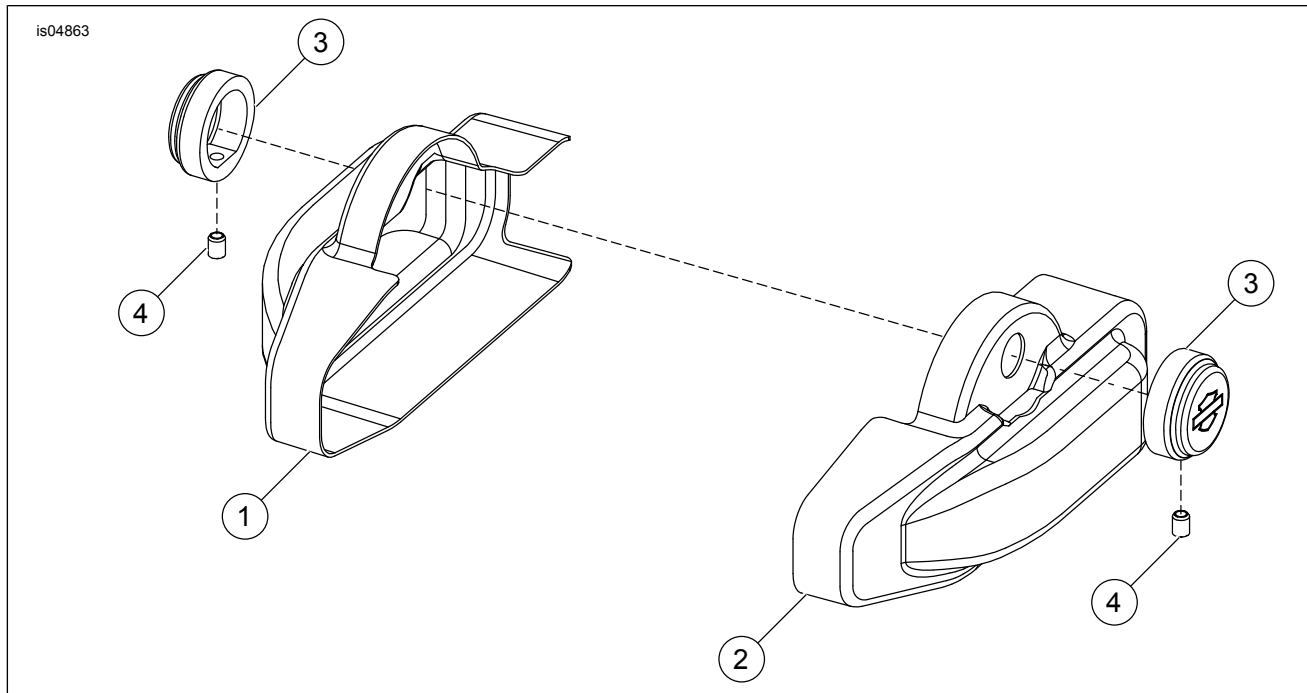


Figure 1. Service Parts: Swingarm Axle Cover

Table 1. Service Parts Table

Item	Description (Quantity)	Part Number
1	Cover, swingarm (left)	Not Sold Separately
2	Cover, swingarm (right)	Not Sold Separately
3	Cover, bolt head (lower) (2)	Not Sold Separately
4	Screw, set hex (with lock patch) (2)	Not Sold Separately