



INSTRUCTIONS

-J01510

REV. 6-2-99

Kit Number 58001-71E

WINDSHIELD ASSEMBLY

General

This kit is designed for installation on 1971 and later FXE, FXEF, FXEF-80, FSX-80, 1982-87 XL and 1982-87 FXR (except 1987 FXLR and and FXRS-SP) model vehicles:

Installation

⚠ WARNING

Rider safety depends on the correct installation of this kit. Follow the procedures in this Instruction Sheet and in the appropriate Service Manual(s). If the procedures are not within your capabilities, or if you do not have the correct tools, have your Harley-Davidson dealer perform the installation. Improper installation could cause loss of control death, or serious injury.

1. To mount windshield assembly, remove fork clamp screws from right side of upper and lower fork brackets.
2. See Service Parts Illustration. Install right fork bracket (13) using two 5/16 x 1/2 in. hex bolts (4), 5/16 lockwashers (6) and 5/16 x 7/8 x 5/64 in. washers (5) supplied in this kit.

NOTE

The three holes in the bracket (1) should be to the top and should extend away from the fork.

3. Tighten bolts to 16-19 ft-lbs. (22-26 N-m) torque. Repeat steps 1 through 3 for left side.
4. See figures 1 and 2. Attach windshield assembly by bolting right and left windshield adjusting brackets to fork mounting using 5/16 x 7/8 in. hex bolts (3), 5/16 lockwashers (6), 5/16 x 11/16 x 1/16 in. washers (5) and 5/16 nuts (14).

NOTE

Windshield should be adjusted parallel to front forks.

5. Adjust windshield to desired height by sliding entire assembly up or down in adjusting brackets. Tighten bolts to 16-19 ft-lbs (22-26 N-m).

⚠ WARNING

Inspect windshield upon completion of installation. Be sure windshield mounting does not restrict full left or full right movement of front fork assembly. Restricted movement could adversely affect handling, resulting in personal injury. If restriction does occur, adjust windshield as needed until proper clearance is obtained. Have experienced Harley-Davidson service personnel correct any problems before riding with this accessory installed.

⚠ WARNING

Check mounting hardware periodically. Never ride with loose mounts. A loose mounting causes extra stress on all other mounts, as well as the windshield itself, and could result in premature failure of components allowing the windshield to detach and startle rider. This could cause loss of control, death or serious injury.

⚠ CAUTION

Do not clean Lexan® polycarbonate in hot sun or high temperature. Powdered, abrasive or alkaline cleanser will damage the windshield. Never scrape the windshield with a razor blade or other sharp instruments because permanent damage will result.

Sunlight reflections off of the inside curvature of a windshield can, at certain times of the day, cause extreme heat build-up on motorcycle instruments. Exercise care in parking. Park facing the sun, place an opaque object over the instruments, or adjust the windshield to avoid reflections.

Harley-Davidson windshields are made of Lexan®. Lexan® is a more durable and distortion-resistant material than other types of motorcycle windshield material, but still requires attention and care to maintain.

- Do not use liquid windshield “protectors” on your windshield. Although they may work well on automobile safety glass, Harley-Davidson cannot ensure the results when used on Lexan® Harley-Davidson windshields. If you want to use a windshield protectant on your windshield, try Harley Glaze Polish and Sealant®.
- Do not use benzine, paint thinner, gasoline, or other types of harsh cleaning agents on windshield. They will damage the windshield surface.
- Do not use benzine, paint thinner, gasoline, lubricants (including Armorall), or other cleaning agents on the rubber bushings. They will damage the bushing surfaces.

NOTE

Covering the windshield with a clean, wet cloth for approximately 15 minutes before washing will make dried bug removal easier.

NOTE

Reference the Owner's Manual for complete care and cleaning of windshield.



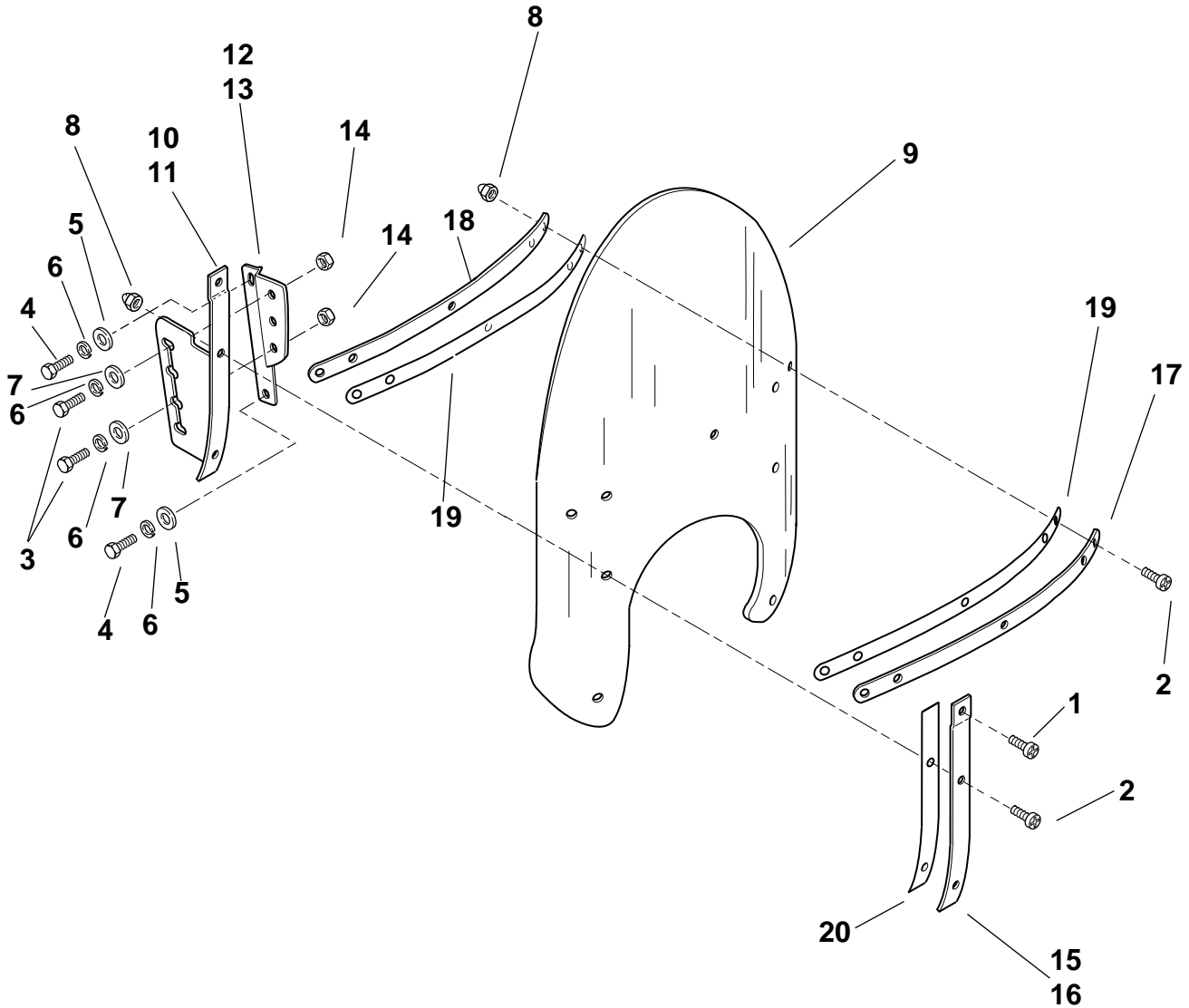
Service Parts

Part No. 58001-71E

Date 6/99

Windshield Kit

sp58013f



58013-97, 57926-98 Windshield Kits

Item Description

- 1 Screw, pan hd, Torx, No.12x7/8 in. (2)
- 2 Screw, pan hd, Torx, No.12x5/8 in. (7)
- 3 Bolt, hex. hd., 5/16-24x3/4 in. (4)
- 4 Bolt, hex. hd., 5/16-24x1-1/2 in. (2)
- 5 Washer, 5/16x7/8x5/64 in. (4)
- 6 Lockwasher, 5/16 in. (8)
- 7 Washer 5/16x11/16x1/16 (4)
- 8 Acorn nut, No. 12-24 x 3/8 in. hex. (9)
- 9 Windshield, *Replacement*
- 10 Adjusting bracket (right)
- 11 Adjusting bracket (left)
- 12 Fork bracket (left)

Part No.

- 2452
- 2921
- 3953W
- 3996
- 6333
- 7041
- 6702
- 7651
- 58061-96
- 58078-49
- 58079-49
- 58004-71

Item Description

- 13 Fork bracket (right)
- 14 Nut (4)
- 15 Brace (right)
- 16 Brace (left)
- 17 Brace (outer)
- 18 Brace (inner)
- 19 Tape, inner & outer brace (2)
- 20 Tape, left & right brace

Part No.

- 58003-71
- 7744
- 58406-75A
- 58408-75A
- 58051-78A
- 58005-78A
- 58052-78
- 58417-77