



INSTRUCTIONS

-J01342

REV. 5-20-98

Kit Number 68471-94B

REAR DIRECTIONAL RELOCATION KIT

General

This kit is designed for installation on 1994 and later XL motorcycles. This kit must be used when saddlebag, Part Nos. 91010-91A or 91004-94 are installed on vehicle. For 1997 and earlier vehicles that have a fender brace installed, follow 1998 model instructions.

NOTE

A pick tool (Snap-On TT600-3) will be required for 1996 and later model vehicles for removing and reinstalling a multilock amp connector.

Kit Contents:

QTY	DESCRIPTION
2	Button head screw, 5/16-18 x 1-5/8 in.
2	Button head screw, 5/16-18 x 1-3/4 in.
2	Spacer, thick
4	Spacer, thin
2	Hex cap bolt, 5/16-24 x 4-1/2 in.
2	Locknut
2	Relocation pad
2	Secondary lock
2	Hex cap bolt, 5/16-18 x 4-1/4 in.
2	Bushings

NOTE

A Service Manual for your vehicle is available from your Harley-Davidson Dealer.

Installation- Hugger Models Only (94-97)

⚠ WARNING

To perform the following steps for Hugger Models only, fender and frame must be sufficiently supported, as both shocks will need to be removed at the same time. If the vehicle is not properly supported damage to motorcycle or injury to person installing kit could occur. If this installation is beyond your capabilities or if you do not have the proper tools to perform this installation, see your Harley-Davidson Dealer.

1. Remove seat, sissy bar and sideplate, if applicable. Retain hardware. Disconnect battery, negative cable first.

⚠ WARNING

To avoid accidental start-up of motorcycle, and possible personal injury, disconnect the battery cables (negative cable first) before performing any of the following procedures. If the positive cable should contact ground with the negative cable installed, the resulting sparks may cause a battery explosion resulting in personal injury.

2. Properly support motorcycle under frame to prepare for removal of right and left shocks.
3. Remove rear button head screw on both sides of fender.

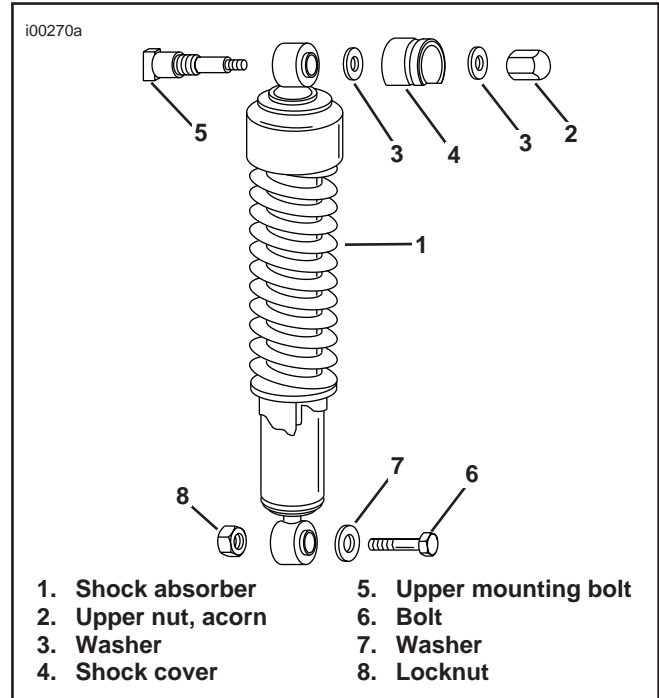


Figure 1. Shock Absorber Removal Hugger Models Only

4. See Figure 1. With rear fender and frame securely supported, remove left and right shocks by removing upper nut (2), washer(s) (3) and shock cover (4). Remove bolt (6), washer (7) and locknut (8) at lower shock mount. Remove shock.
5. Install long 4-1/2 in. bolt (1) from kit, from inside of fender out through rear holes where button head screws were removed in Step 3.
6. Reinstall shocks using original hardware. Torque acorn nut (2) to 21 -35 ft-lbs. Torque locknut (8) to 30 - 50 ft-lbs.
7. Continue on to the next section.

Installation- All Models Including Huggers

1. Remove seat, sissy bar, and sideplates, if applicable. Retain all parts and hardware. Disconnect battery, negative cable first.

⚠ WARNING

To avoid accidental start-up of motorcycle, and possible personal injury, disconnect the battery cables (negative cable first) before performing any of the following procedures. If the positive cable should contact ground with the negative cable installed, the resulting sparks may cause a battery explosion resulting in personal injury.

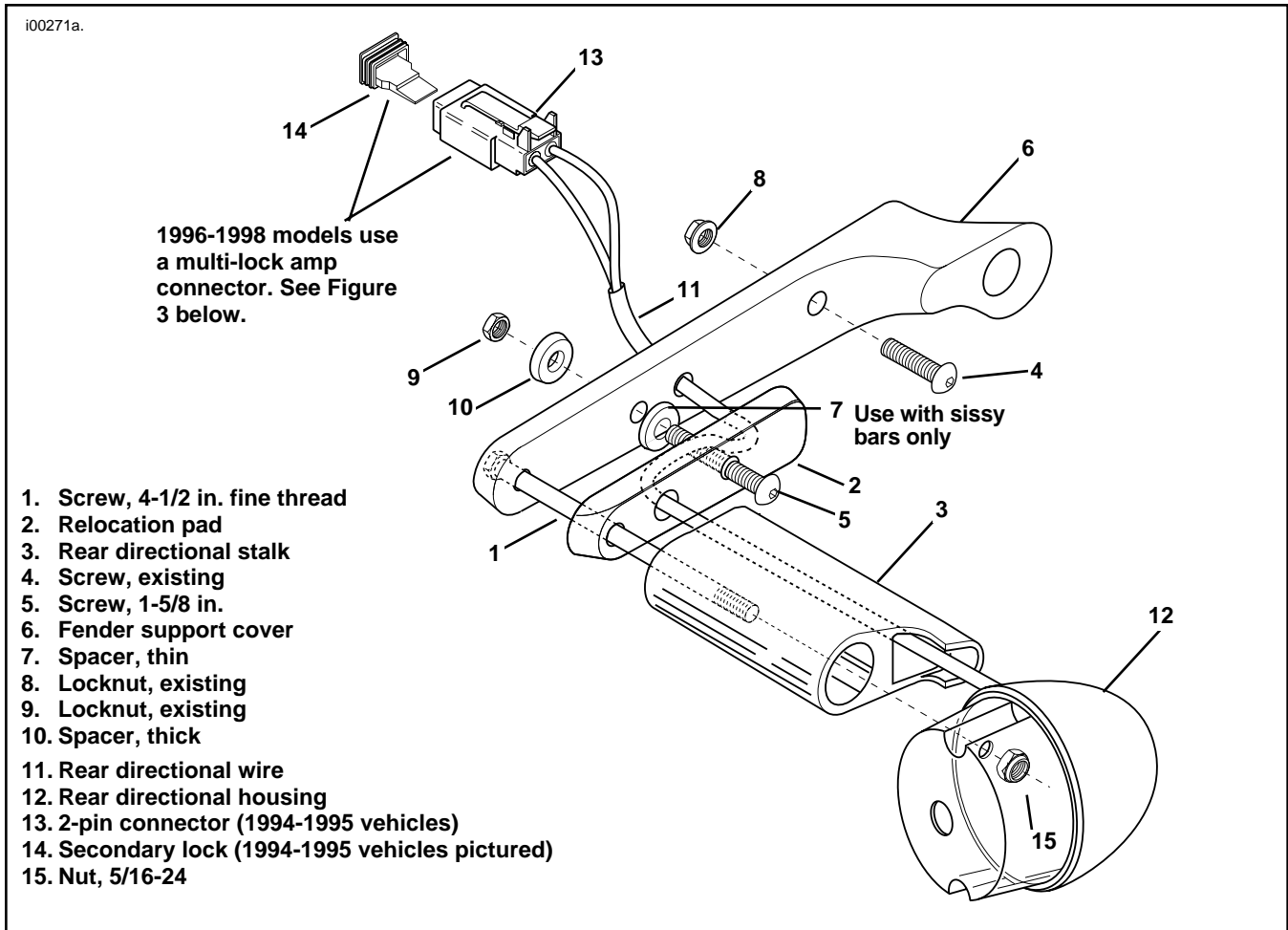


Figure 2. Routing Rear Directional Wires and Installing Relocation Pad on 1994-1997 models

2. See Figure 2. Disconnect directional electrical system by removing connector from T-stud on frame.

NOTE

On 1999 models, the multilock amp connector is under the lens plate of the taillight. 1996-1998 vehicles have an 8-place multilock amp connector as shown in Figure 3. 1994-1995 vehicles have a Deutsch connector (13) as shown in Figure 2.

NOTE

Before performing the next step, notice location of wires in contact so they may be later reinstalled in their same position.

3. On 1994 - 1995 vehicles, with 2 pin connectors, separate connector halves. Remove orange secondary lock (14) from directional connector (13). Remove contact by gently pulling wires (one at a time) away from contact, while releasing small locking tabs on inside of connector, using a small flat head screwdriver. Pull wires back through frame.

NOTE

See Service Manual for more detailed instructions on amp multilock electrical connector installation and removal.

NOTE

On 1996 - 1998 vehicles, the multilock amp connector is under the seat. See Service Manual for more detailed instructions. On 1999 models, it is necessary to remove the taillight lens to access the amp multilock connector.

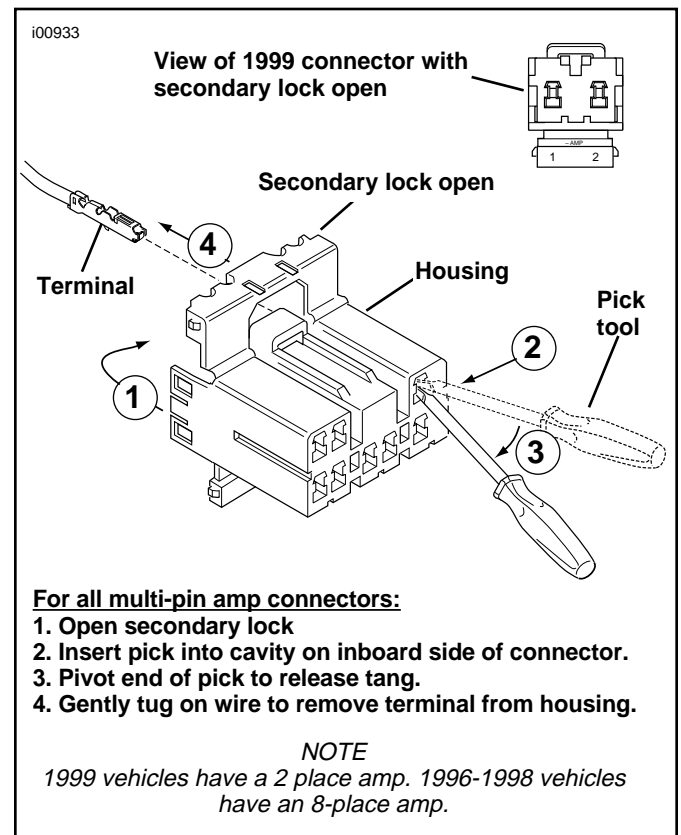


Figure 3. Amp Multilock Electrical Connectors

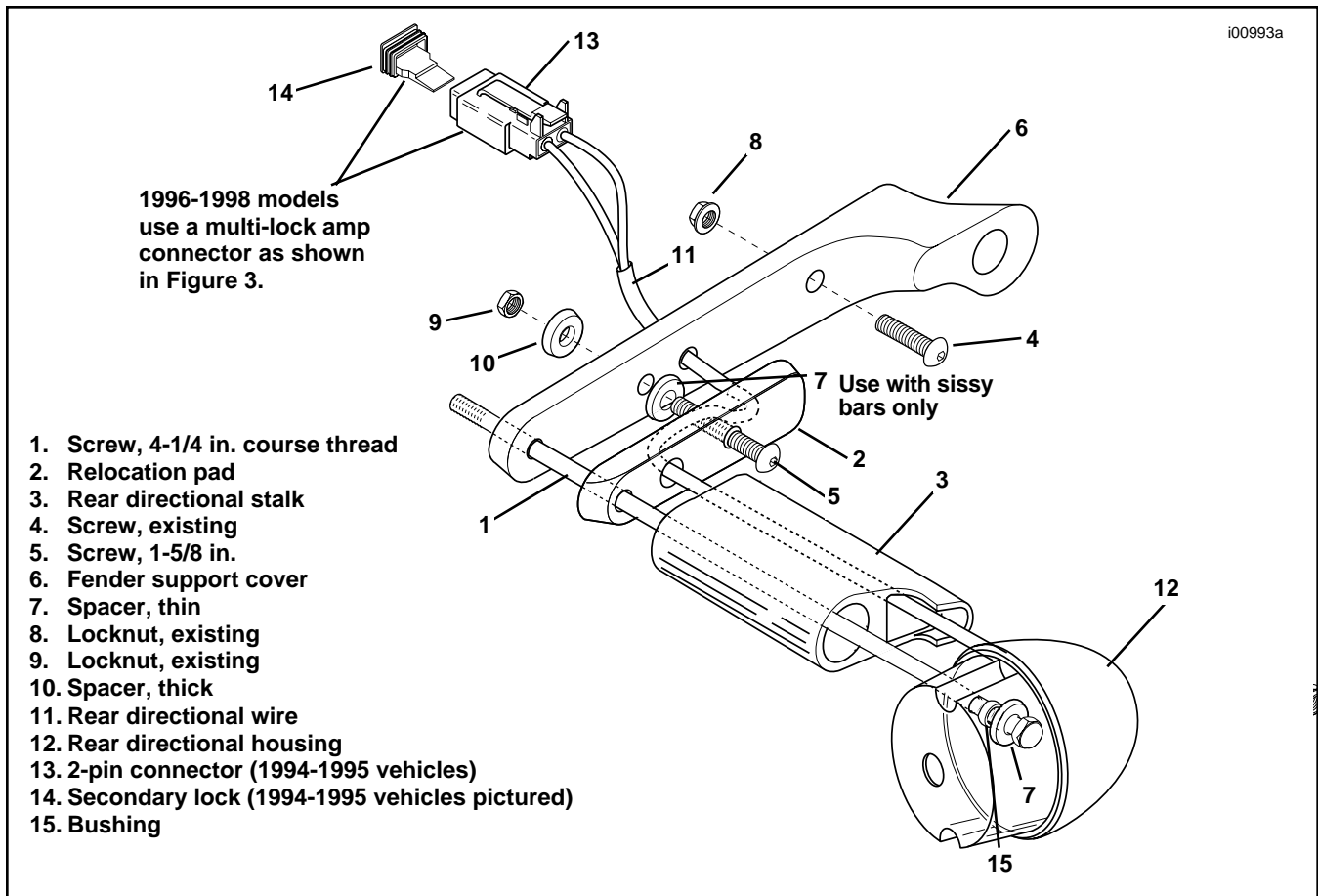


Figure 4. Routing Rear Directional Wires and Installing Relocation Pad on 1998 models

See Figure 3. On 1996-1998 vehicles with multilock amp connectors, remove the connector from the retaining device according to Service Manual instructions:

- a Open the secondary lock.
- b Insert the pick into cavity on inboard side of connector.
- c Pivot end of pick to release tang.
- d Gently tug on wire to remove terminal from housing.

NOTE

Perform the following procedures one side at a time until instructed to go to opposite side of vehicle.

4. Remove button head screw(s) and locknut(s) that secure fender support cover to frame. (If you have a Hugger model with a sissy bar, one of these screws and locknuts may already be removed.) Retain hardware for later reinstallation.
5. Remove nut on inside of fender that secures rear directional to fender. Retain nut.
6. Remove the rear shock absorber upper acorn nut, washers, and shock stud cover. This will allow you to pull the fender support cover out far enough to access the stud that holds the rear turn signal in place.

With a deep well socket, remove rear turn signal stud from fender support cover, and remove rear turn signal. Discard stud.

7. Take note of how rear directional wire is routed on inside of fender support cover (for later re-routing) and untape wire from fender support cover.
8. See Figure 2. Using a small piece of tape, tack large spacer (10) from kit onto frame over hole from which rear directional stud was removed.
9. Remove lens from rear directional. Remove bulb from rear directional. Retain all parts.

NOTE

On 1994-1997 models, before performing next step, make sure that T-spacer located on inside of fender is still in place.

10. **All 1994-1997 Models Except Hugger.** See Figure 2. Locate 4-1/2 in. rear directional bolt (1) from kit. Insert bolt, from inside of fender, out through rearmost hole in fender frame. Leave loosely in place.

CAUTION

Use caution not to scratch chrome surface of turn signal housing while drilling out threads.

All 1998 models. See Figure 4. Drill out threads in turn signal housing using a 13/32 inch drill bit. Use caution not to scratch chrome surface of turn signal housing. Place thin spacer (7) and bushing (15) on 4-1/4 in. bolt (1) near threads. Install bolt through turn signal housing. Bushing should be level with inside boss in turn signal housing.

NOTE

Narrow end of relocation pad should be pointed to rear of motorcycle if it is properly position in next step.

11. Insert wire from rear directional through center hole in relocation pad, along channel on the inside of the pad and through third hole from rear in fender support cover. Re-route wire back along inside of fender support cover and retape into place on back of fender support cover.

12. **Non-sissy bar models only.**

- **On 1994-1997 models**, see Figure 2. Install rear directional with relocation pad and fender support cover onto fender using 4-1/2 in. bolt (1) inserted through rear of fender in Step 10. Tighten bolt until snug.

On 1998 models, see Figure 4. Place Loctite on threads of 4-1/4 in. bolt (1). Install rear directional with relocation pad and fender support cover onto fender using 4-1/4 in. bolt (1) inserted through turn signal housing in step 10. Tighten bolt until snug.

- Install 1-5/8 in. bolt (5) from kit through forwardmost hole of relocation pad (2), fender support cover (6), thick spacer (10) (taped to frame) and fender support. Reinstall using original nut (9) removed in Step 5.
- Reinstall original nut (8) and bolt (4) removed from forwardmost hole in fender support cover (6). Tighten finger tight.

Models with sissy bars.

- Place fender support cover (6) over fender support. Reinstall sissy bar sideplate over cover and loosely secure using original hardware.
- Insert 1-3/4 in. bolt (5) from kit through front hole of relocation pad (2). Place thin spacer (7) over bolt (5) and install pad (2) by inserting bolt (5) through fender support cover (6), thick spacer (10) (taped to frame and fender support). Loosely secure with original nut (9).
- **On 1994-1997 models**, install turn signal assembly onto pad using 4-1/2 in. bolt inserted through fender in Step 10. Tighten until just snug.

On 1998 models, see Figure (4). Install turn signal assembly onto pad using 4-1/4 in. bolt (1) inserted through turn signal housing in step 10. Tighten bolt until snug.

13. **On 1994-1997 models**, tighten 4-1/2 in. rear directional bolt (1) from inside of fender to 12 ft-lbs. Install locknut (15) from kit onto bolt at inside of directional housing (12). Tighten securely.

On 1998 models, tighten 4-1/4 in. rear directional bolt from inside of turn signal housing to 12 ft-lbs.

14. Tighten two button head screws (4 & 5) to 12 ft-lbs.

15. Reinstall bulb and rear directional lens.

16. Repeat Steps 4 - 15 for opposite side of vehicle.

17. **For 1994 - 1995 models:** Reroute rear directional wires through frame. Reinsert wires into rubber seal in 2-pin connector (13), making sure wires are in proper location. Push upward until you feel wires snap into place. Gently tug on wires to make sure connection is made. Install new secondary lock (14) from kit onto connector. Proceed to step 18.

NOTE

See Service Manual for more detailed instructions on installing and removing amp multilock electrical connectors.

On 1996 - 1998 models: Reroute rear directional wires through frame.

From the secondary lock side of the connector, insert the terminal into its respective numbered chamber until it snaps in place according to Service Manual instructions. For proper fit, the slot in the terminal must face the tang in the chamber.

Gently tug on wire end to verify that the terminal is locked in place and will not back out of chamber. Rotate the hinged secondary lock inward until tabs fully engage latches on both sides of connector. Insert the socket housing into the pin housing until it snaps into place. Install connector on retaining device either attachment or rosebud clip.

On 1999 models: insert connector in terminal block under taillight lens. Reinstall taillight lens.

18. Reconnect rear directional and reinstall onto T-stud on frame.

⚠WARNING

Always connect the positive battery cable first. If the positive cable should contact ground with the negative cable installed, the resulting sparks may cause a battery explosion resulting in personal injury.

⚠WARNING

After installing seat, pull upward on front of seat to be sure it is locked in position. If seat is loose, it could shift position during vehicle operation and startle the rider, causing loss of control and personal injury.

19. Reconnect battery (positive cable first) and test rear directionals for proper operation. Reinstall seat and sissy bar, if applicable.