



# INSTRUCTIONS

-J01223

REV. 4-2-98

Kit Number 32732-98

## SPORTSTER CYLINDER BASE COVER

### General

This kit fits 1991 and later Sportster Model Motorcycles.

#### Kit Contents:

- 1 Chrome cylinder base cover
- 1 Allen bolt
- 1 Flanged spacer
- 1 Chrome "hot spot"

### Installation

1. See Figure 1. Remove existing allen bolt and washer. Place washer on new allen bolt from kit.
2. See Figure 2. Slide bolt and washer through cylinder base cover and flanged spacer. Position the spacer so the flanged side is closest to the chrome cover.
3. See Figures 2 and 3. Install assembly on engine as shown. Tighten bolt to 18 ft-lbs. Push chrome "hot spot" onto bolt end.

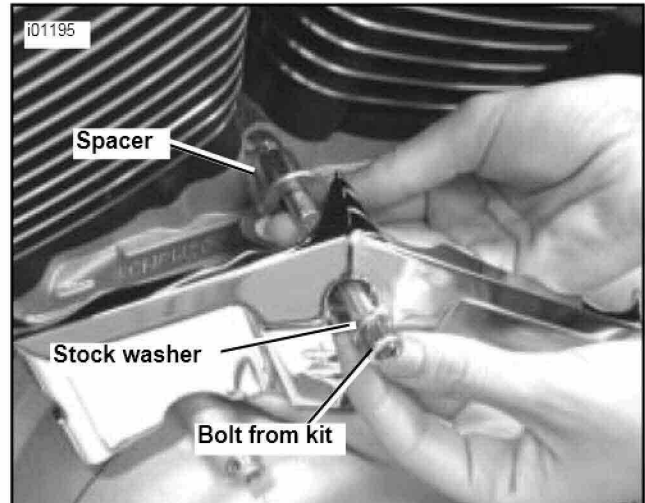


Figure 2. Slide bolt and washer through base cover and flanged spacer

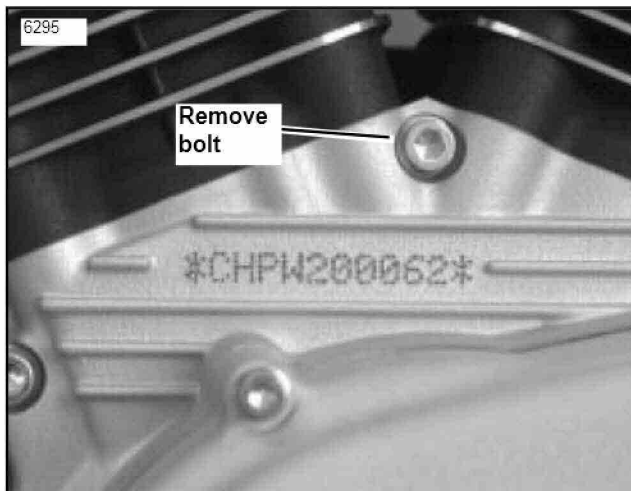


Figure 1. Allen bolt location



Figure 3. Press chrome "hot spot" into bolt end