



# INSTRUCTIONS

-J01205

REV. 03-19-2003

Kit Numbers 91982-98A and 91983-98A

## MIRROR KIT, SHORT STEM, SATIN BLACK

### General

The following kits may be used on all model Harley-Davidson motorcycles:

Stem Length	Mirror Surface	Mirror Finish	Right/Left Side	Kit Number
Short	Convex	Satin Black	Right	91982-98A
Short	Convex	Satin Black	Left	91983-98A

See Figure 1 for items contained in these kits.

#### NOTE

Three spacers (items 2, 3, and 4) are included with each kit; only one is necessary for mirror assembly. Choose the spacer that is best suited for each motorcycle application.

### Installation

1. Remove the existing mirror, if present. Discard any lockwashers and acorn nuts used to mount the original mirror.
2. Install one spacer (Item 2, 3, or 4) onto the stem of the new mirror.
3. Insert the mirror stem into the existing hole in the handlebar control lever. Secure the mirror stem with the flat washer (5), lockwasher (6), and acorn nut (7).

#### NOTE

If the acorn nut does not fasten the mirror stem firmly, use the hex nut (8) as a jam nut.

4. Adjust the mirror for proper field of vision and tighten the acorn nut to 12 ft-lbs (16 Nm). Check mirror adjustment and reposition if necessary.
5. Stretch the mirror trim (9) around the outer perimeter of the mirror (1).

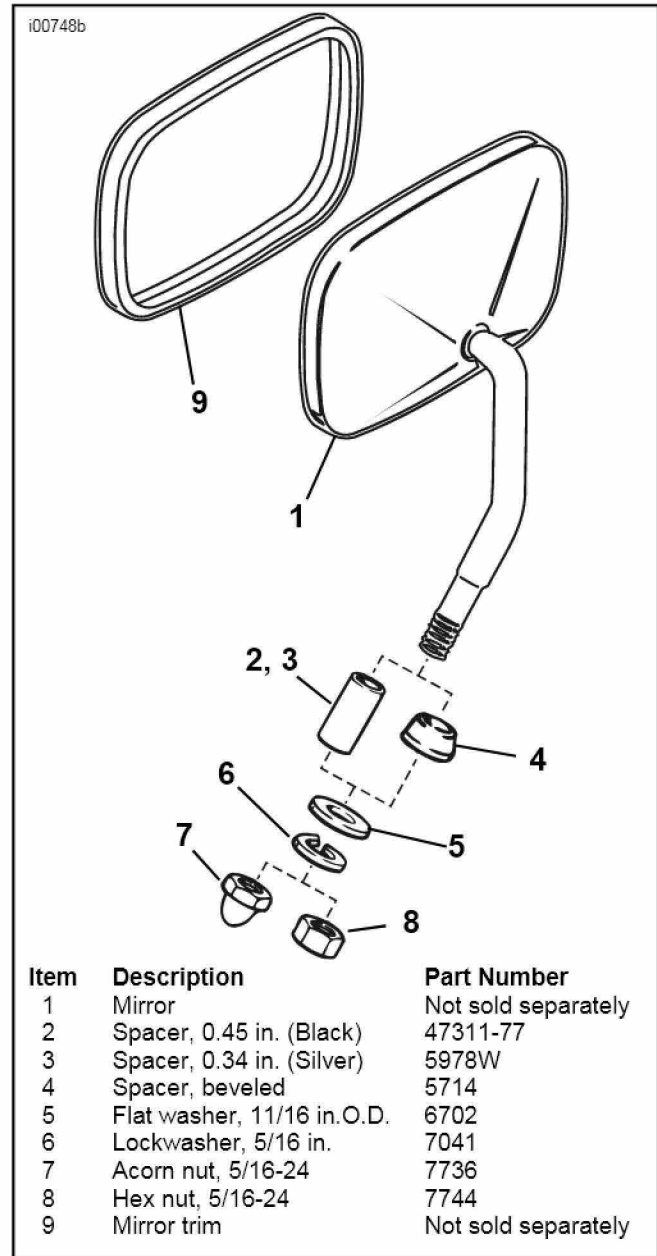


Figure 1. Mirror Assembly