



INSTRUCTIONS

-J01166

REV. 6-1-94

Kit Numbers 61204-94, 61391-94

SPORTSTER FUEL TANK WITH 3-1/4 GALLON CAPACITY

General

This kit is designed to provide a direct replacement prime finish fuel tank for all 1995 883 and 1200 cc SPORTSTER® models. The fuel tank in this kit will fit all 1986 - 1994 SPORTSTER® models, provided the appropriate hardware kit is also purchased.

The hardware kit Part No. and model applicability is listed below. The fuel tank contained in this kit has a "primed" finish. This fuel tank is also available painted with the following colors.

Hardware Kits (Must be purchased separate.)

Part No.	Model Usage
61212-94	1986-1991 All XLH Models
61958-94	1992-1994 All XLH Models

NOTE

This instruction sheet also covers the installation of the following painted fuel tank Part No.

Part no.	Color
61381-94VD	Vivid black
61381-94LH	Bright victory red sun-glo
61381-94WD	Two-tone victory red sun-glo
61381-94ME	Two-tone aqua pearl and silver
61381-94MH	Aqua pearl
61381-94DG	New nugget yellow
61381-94DF	New burgundy pearl
61381-94AJ	New nugget yellow/vivid black
61381-94AR	Vivid black/nugget yellow

Kit Contents

Qty.	Description
2	Cable straps
1	Hose clamp
4	Grommets
1	Fuel tank

Removal – Stock Fuel Tank

⚠ WARNING

To avoid accidental start-up of vehicle and possible personal injury, disconnect the battery cables (negative cable first) before performing any of the following procedures.

⚠ WARNING

Gasoline is extremely flammable and highly explosive under certain conditions. Be sure engine is cold and do not smoke or allow open flames or sparks anywhere in the area while removing the stock fuel tank.

1. Turn fuel supply valve handle to OFF. Cut fuel hose clamp at bottom of fuel supply valve and remove hose.

2. Remove vacuum hose from fuel supply valve.
3. See Figure 1. Remove front and rear mounting bolts (1 and 2) and the associated hardware. Note the position of all parts so they will be reassembled correctly when new tank is mounted.
4. Disconnect vent elbow fitting from bottom right side of tank.

NOTE

If required, cut the existing cable strap routed through the rear fuel tank mount

5. Remove the stock fuel tank. Drain any gasoline in stock tank into a proper, clean container. Remove fuel tank cap and retain for use on new tank.
6. See Figure 1. Remove four T-spacers (4) and retain for use on new tank.

NOTE

The valve fitting (nut) has right hand threads in the portion that attaches to fuel tank and left hand threads that mate with threads on the valve.

7. Note position of fuel supply valve. Turn the hex fitting (5) that attaches the valve (6) to the fuel tank counter-clockwise and remove the valve, gasket (7), and filter assembly (8).
8. Retain all parts removed in step 7 for use on new tank.

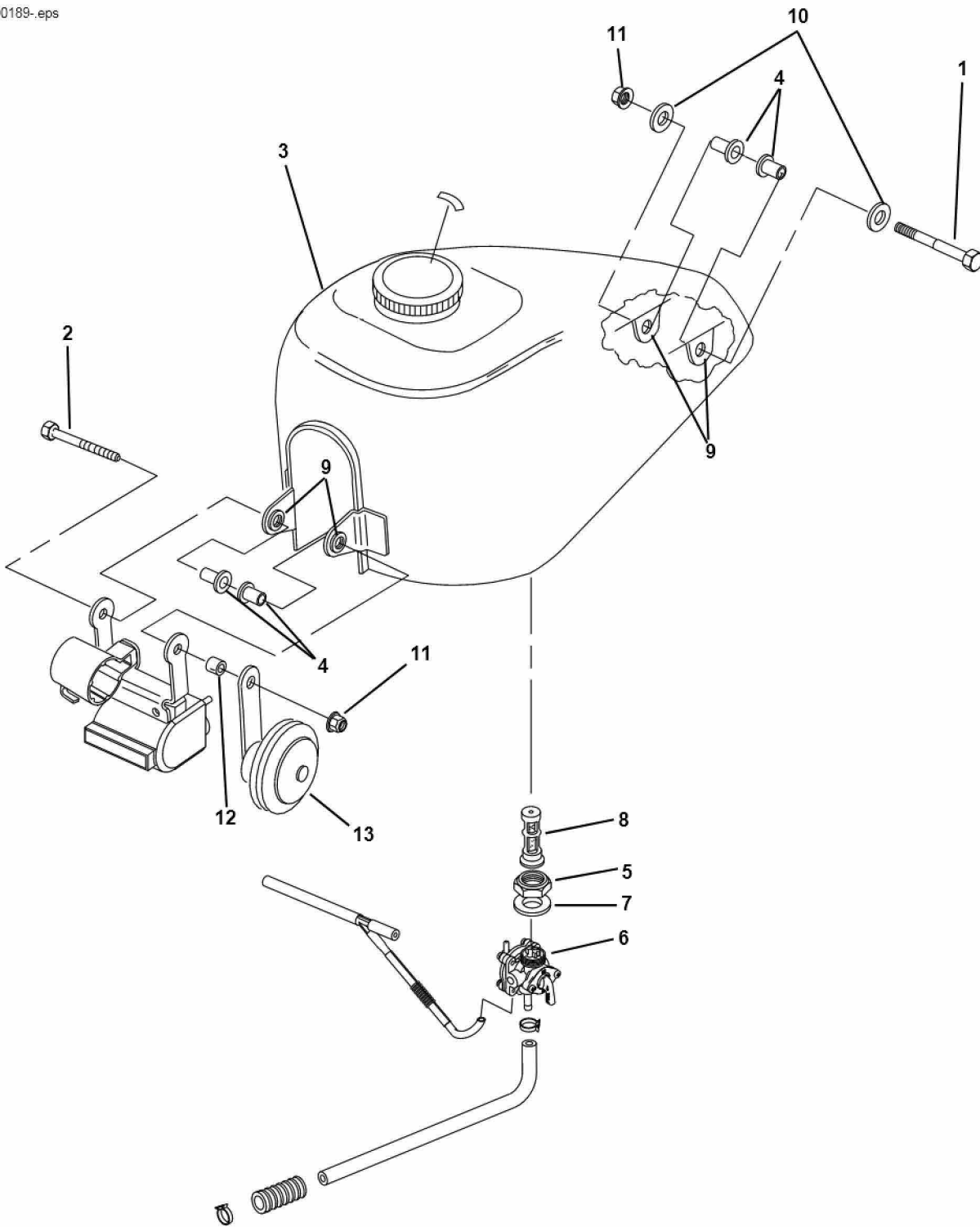
Installing Removed Parts On New Tank

1. Remove protective sleeves from vent tube and fuel valve fitting on bottom of tank.
2. See Figure 1. Install new grommets (9) from kit in holes of mounting tabs.
3. Install T-spacers (4) in grommets as shown in Figure 1.
4. Remove hex fitting (5) from valve. Coat the valve and fuel tank threads with Loctite® PIPE SEALANT WITH TEFLON.
5. Install gasket (7) on valve (6) and install filter strainer (8) on gasket.
6. Thread hex fitting (5) on right hand threads of fuel tank two turns. Hold hex fitting and thread valve into left hand threads of hex fitting for two turns.

⚠ WARNING

Do not thread fitting onto valve more than two turns to avoid "bottoming" fitting on valve. This could cause a gasoline leak, fire hazard, and possible personal injury.

7. Position valve as it was on stock tank and tighten hex fitting (clockwise) to 18 ft-lbs.



- 1. Rear bolt
- 2. Front bolt
- 3. Fuel tank
- 4. T-spacers (4)
- 5. Hex fitting (nut)
- 6. Fuel supply valve
- 7. Gasket

- 8. Filter
- 9. Grommets (4)
- 10. Washers (2)
- 11. Nut (2)
- 12. Horn spacer (883 cc models only)
- 13. Horn (883 cc models only)

Figure 1. Fuel Tank Mounting Hardware

Installing New Tank

1. Place fuel tank on frame. If tank contacts seat, see Figure 2. Lift rear of fuel tank so bottom rear edge of tank is above seat pan. Keep tank in this position and install front mounting bolt (2).
2. See Figure 1. Install washer (10) on end of rear bolt (1) and slide bolt through T-spacers (4) and frame.
3. Install a washer (10) on rear bolt and install nuts (11) on both mounting bolts, but do not tighten.
4. Install front bolt (2) and hardware removed in step 3 of "Removal - Stock Fuel Tank"

NOTE

If this kit is being installed on an 883 cc model, make certain the horn spacer (12) and horn (13) are reinstalled correctly.

⚠CAUTION

Check that wiring and hoses are not pinched between fuel tank and frame.

5. Before tightening the fuel tank mounting bolts, refer to Figure 1 to assure that all parts attached with fuel tank mounting bolts are properly positioned.
6. Tighten fuel tank mounting bolts to 8 -16 ft-lbs.

⚠CAUTION

Check clearance between front directional lights and fuel tank by turning handlebars full left and right. If directional lights contact tank, loosen mounting screws and rotate light forward.

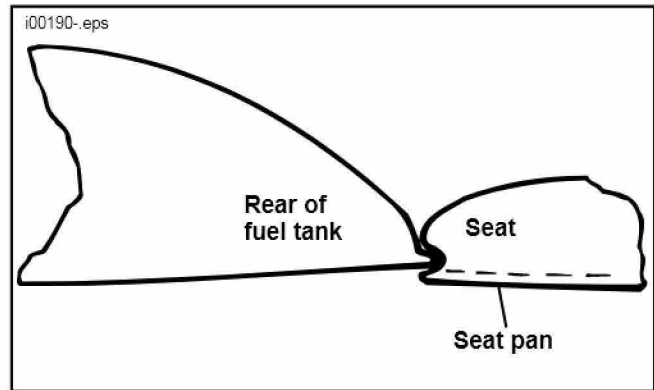


Figure 2 Fuel Tank To Seat Location

7. Install vacuum line on fuel supply valve.
8. Slip hose clamp over fuel line, leaving clamp loose. Install fuel line on fuel supply valve and tighten clamp.

⚠WARNING

Make certain fuel line will not contact hot or moving throttle parts. Fuel line contact with hot or moving parts could cause a fire hazard and possible personal injury.

9. Reconnect large end of vent line elbow to tank vent fitting.
10. If cable strap was removed, install a cable strap at rear of tank to secure main wiring harness and vent line to frame backbone.
11. Fill tank with gasoline and install cap from previously removed stock tank. Check valve and fuel line for leaks.
12. Reconnect battery cables, positive cable first.