



INSTRUCTIONS

-J01124

REV. 12-1-93

Kit Number 44438-82A

REAR BRAKE LINE KIT

General

This kit is designed for installation on all 1982 to early 1987 XLH model vehicles which incorporate flared style fittings on the original equipment rear brake hose. This kit includes the following components:

Kit contents:

QTY	DESCRIPTION
1	Screw, pan head
1	Screw, hex socket, button
1	Brake line, rear
1	Spacer, coil cover
1	Spacer, bumper

WARNING

- The rider's safety depends on the correct installation of this kit. Follow the procedures in this Instruction Sheet and the appropriate Service Manual. If the procedures are not within your capabilities, or if you do not have the correct tools, have your Harley-Davidson dealer or other qualified mechanic perform this installation. Failure to comply with this warning may result in death or serious injury.
- Clean brake system components in denatured alcohol or brake fluid. Do not use mineral base cleaning solvents such as gasoline or paint thinner. Use of mineral base solvents causes deterioration or rubber parts that continues after assembly, and can result in component failure, which could lead to death or serious injury.
- Always test motorcycle brakes at low speed after repairing and/or bleeding the brake system. If brakes are not installed correctly, rider could lose control of vehicle, resulting in death or serious injury. Harley-Davidson recommends that all brake repairs performed by a Harley-Davidson dealer or other qualified mechanic.
- Brake fluid can cause irritation of eyes and skin, and may be harmful if swallowed. If fluid is swallowed, induce vomiting by administering two tablespoons of salt in a glass of warm water and then call a doctor. In case of contact with skin or eyes, flush with plenty of water. Seek medical attention for your eyes. **KEEP BRAKE FLUID OUT OF THE REACH OF CHILDREN.**

Installation

1. Locate rear brake switch, which is attached to original rear brake hose fitting on left side of motorcycle (beneath battery). Make sure ignition switch is in "OFF" position. Pull back protective rubber cover on rear brake light switch terminals. Remove switch and rubber cover from brake hose fitting, collecting any brake fluid which may drain from fitting.

2. Remove two clips and their fasteners which attach rear brake hose to swingarm and frame on left side of motorcycle.
3. Remove screw, lockwasher, and mounting tab (or clip) which attach steel tubing section of rear brake hose to sprocket. Discard screw only.
4. Remove button head screw and washer(s) which attach rear brake to frame on left side of motorcycle. Discard washer(s) only.
5. Loosen fittings at each end of rear brake disc, collecting any brake fluid from fittings. Remove and discard original rear brake hose.
6. Position new rear brake hose (from kit) to motorcycle. Tighten securely to master cylinder. Repeat procedure for flared fitting to be attached to rear brake caliper.

NOTE

Inspect brake line after attaching to master cylinder and caliper. If clearance exists between brake line and frame mounting surfaces, install flat washer (4) and spacer (7) in respective positions referenced in Steps 7 and 9. If no clearance exists in these two locations, do not install washer (4) and spacer (7).

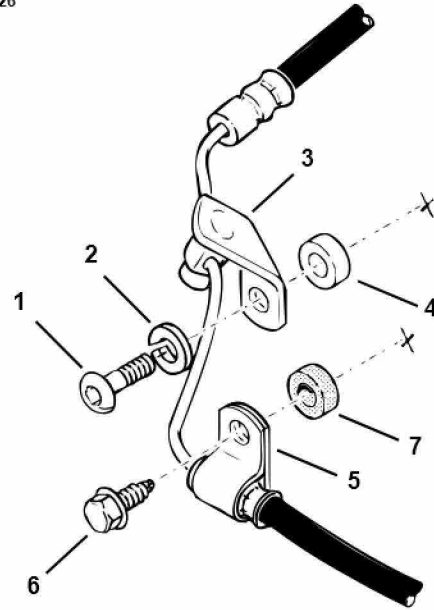
7. See Figure 1. Insert button head screw (1) (from Step 4) through lockwasher (2), through new rear brake hose bracket (3), flat washer (4) (from kit), and into clip nut attached to frame member. Tighten securely.
8. Secure steel tubing section of new rear brake hose to sprocket cover using Phillips head screw (from kit), lockwasher (from Step 3), and mounting tab/ clip (from Step 3).
9. Secure new rear brake hose to swingarm and frame on left side of motorcycle using two clips (5) and their fasteners (6) (from Step 2) and spacer (7) (at frame position). Be sure to secure the black ground wires under the same screw which secures the clip to frame.
10. Clean threads of original rear brake light wires. Wrap a short length of teflon pipe tape around threads of switch. Install switch with protective rubber cover to new rear brake hose fitting. Torque switch to 7-10 ft-lbs (9-14 Nm). Connect wire leads to switch terminals. Slide rubber cover to its proper position over switch or wire terminals.

CAUTION

Use only fresh D.O.T. 5 hydraulic brake fluid (Harley-Davidson Part No. 99902-77) to fill rear brake master cylinder, as required, during the brake system bleeding procedures. Hydraulic brake fluids other than D.O.T. 5 may not be compatible with the existing brake fluid and/or rubber components in the brake system, and may not meet the required performance specifications of the D.O.T. 5 brake fluid.

11. Bleed rear brake system and adjust rear brake pedal height according to the procedures listed in the appropriate Service Manual. Check for proper operation of rear brake light and switch. Verify that the brake pedal has a firm feel when depressed, and that the brake system has no hydraulic fluid leaks. Conduct moving tests of rear brake system at low speed before operating motorcycle at normal speeds.

i02226



- | | |
|----------------------------|----------------|
| 1. Button head screw | 4. Flat washer |
| 2. Lockwasher | 5. Clip |
| 3. Rear brake hose bracket | 6. Fastener |
| | 7. Spacer |