



INSTRUCTIONS

-J01083

REV. 8-1-91

Kit Numbers 93639, 93640, 93641

SAFETY RECALL 076 ADDENDUM 1992 MODEL BRAKE PAD REPLACEMENT

General

Harley-Davidson has become aware that the possibility exists for the original equipment front and rear brake friction pads, presently installed on this vehicle, to separate from their respective backing plates. This could cause the friction pads to dislodge from the caliper assemblies. Such a condition could develop without prior warning and cause a reduction in stopping ability. This is the same condition affecting the vehicles referenced in Service Bulletin M-1015 - Safety Recall 076. Since the backing plate is not affected by the friction pad's dislodgement, it is still possible to restore some brake function in whichever brake caliper is affected with a few strokes of the brake control lever or pedal.

The front and rear caliper brake pads in this 1992 Model Brake Pad Replacement Kit must be installed on this vehicle, and the special Safety Recall 076 Addendum Card (referenced in the CREDIT PROCEDURE at the end of this Instruction Sheet) must be completed, before the motorcycle can be sold or delivered.

Refer to Table I to verify the model application of this Kit.

NOTE

See Figure 1. The replacement brake pads contained in the kits (listed in Table I) are identified by white paint dabs on front and rear edge of friction material. In addition to the "Hayes 56 ----," the "CNC" impression stamped on metal backing plate indicates pad is the latest configuration.

Brake Pad Replacement Procedure

FRONT BRAKE CALIPER(S) (ALL MODELS EXCEPT FXSTS)

1. See Figure 2. Remove mounting fasteners (1 and 2). Apply hand pressure alternately to each side of the caliper in order to force the piston into caliper; this will ease the removal procedure.
2. Lift caliper off disc.
3. Remove screw (15) and inboard pad (9).
4. Remove assembly of outboard pad (9) and pad holder (7); remove pad from holder. Note position of spring clip (8) so that you will install it in the correct position later.
5. Install new inboard pad (has hole for screw 15) in caliper and fasten with pad retainer (14) and new self-tapping screw (15).

Table I. Brake Pad Replacement Kits

Kit Part Numbers	Model Usage (1992 models)	Kit Contents
93639	FLHTC, FLHS, FLTC-ULTRA, FLHTC-ULTRA, FLHTP - Windshield & Fairing models.	Four (4) front caliper brake pads, two (2) screws (Part No. 3562), and two (2) large rear caliper brake pads.
93640	XLH 883, XLH 1200, XLH 883 HUGGER, XLH 883 DELUXE, FXR, FXRS, FXLR, FLSTC, FLSTF, FXSTC, & FXSTS.	Two (2) front caliper brake pads, one (1) screw (Part No. 3562), and two (2) small rear caliper brake pads.
93641	FXDB-DAYTONA, FXRT, FXRS-SP, FXRS-CONV, FXRP - Windshield & Fairing models.	Four (4) front caliper brake pads, two (2) screws (Part No. 3562), and two (2) small rear caliper brake pads.

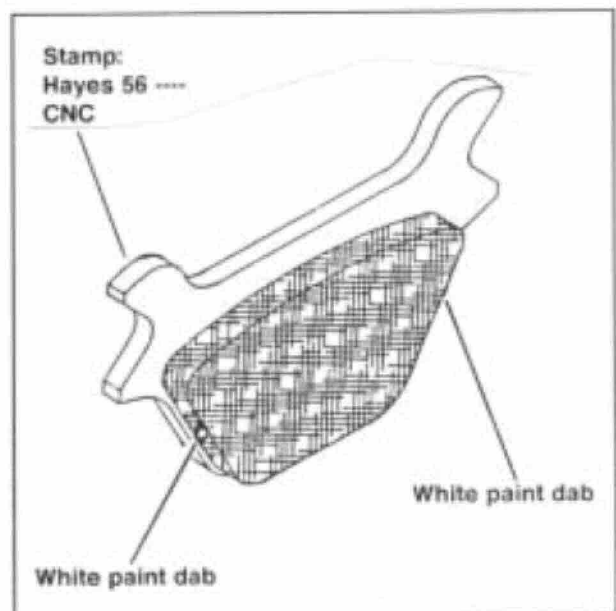


Figure 1. Brake Pad Marking

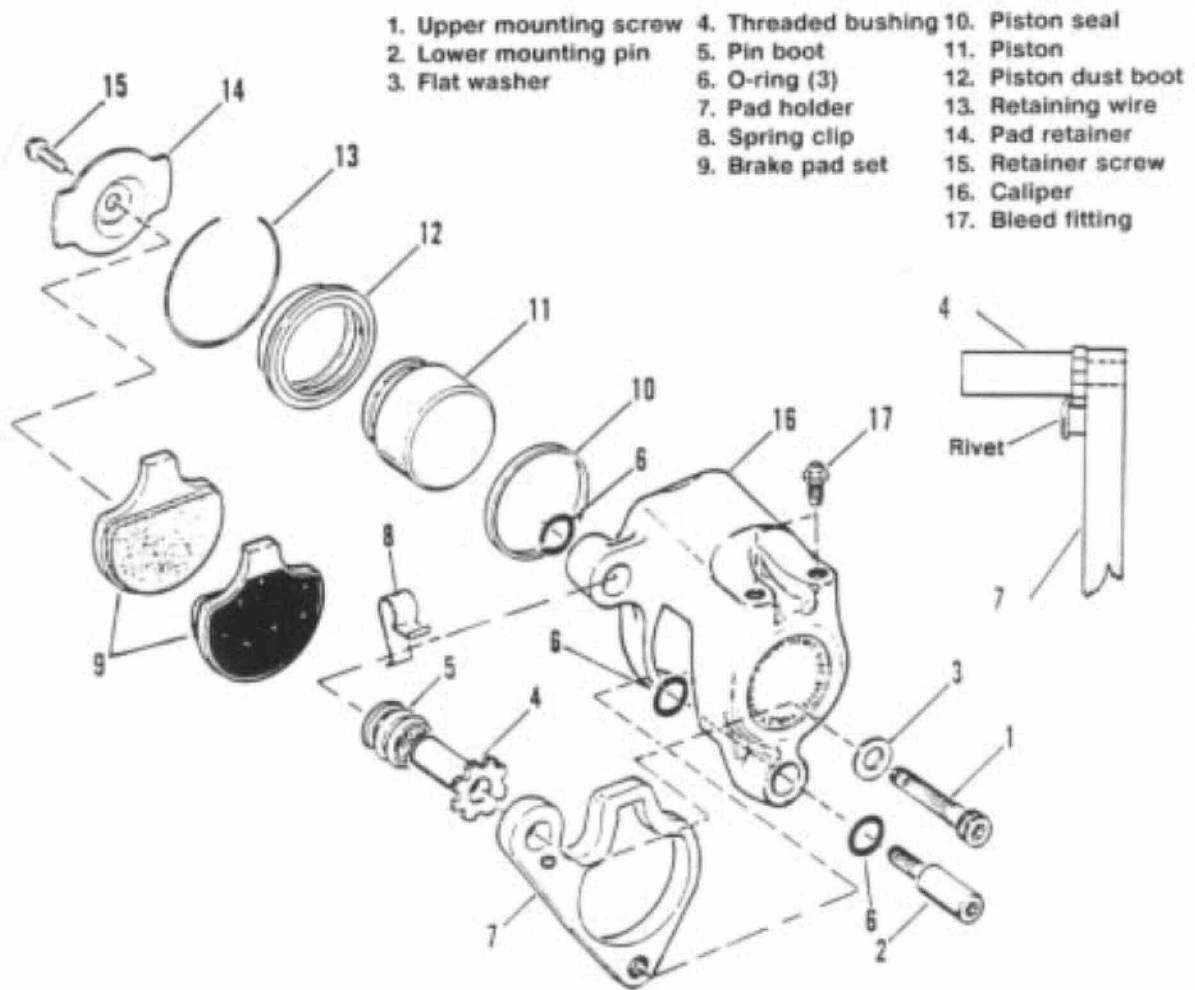


Figure 2. Front Brake Caliper

6. Tighten screw (15) to 40 - 50 in-lbs torque.
7. Install new outboard pad (9) and spring clip (8) in pad holder (7).
8. Insert assembly of outboard pad (9), pad holder (7), and spring clip (8) into place, with backside of the pad against face of piston.

NOTE

The spring clip loop and outboard brake pad friction material must always face **away** from the piston. If either is facing the piston, disassemble the components, then reassemble the components in their proper positions.

CAUTION

See Figure 2, Assembled View of (4) and (7). The head of the threaded bushing (4) must be assembled beneath the rivet head on the pad holder (7). In addition, one of the U-shaped notches on the outer edge of the bushing flange must engage the rivet body. If the bushing is not positioned properly, damage to the rivet will occur when the caliper mounting fasteners are tightened.

9. Position caliper so that disc is situated between friction pads, and lower mounting hole in caliper is aligned with lower mounting lug (on front fork).
10. See Figure 2. Insert lower mounting pin (2) through caliper and front fork lower mounting lug, and then thread pin into tapped hole at lower end of pad holder (7). Tighten pin to 25 - 30 ft-lbs torque.
11. Rotate caliper to align upper mounting holes in caliper and front fork.
12. Install upper mounting screw (1) with washer (3) through front fork upper mounting lug and pad holder (7), and then thread the screw into threaded bushing (4). Tighten screw to 25 - 30 ft-lbs torque.
13. Pump brake lever until pads contact brake disc.

FXSTS FRONT BRAKE CALIPER

1. See Figure 3. Remove cotter pin (1) and washer (2) from upper mounting bolt (3).
2. Remove upper (3) and lower (5) mounting bolts and washer (4).

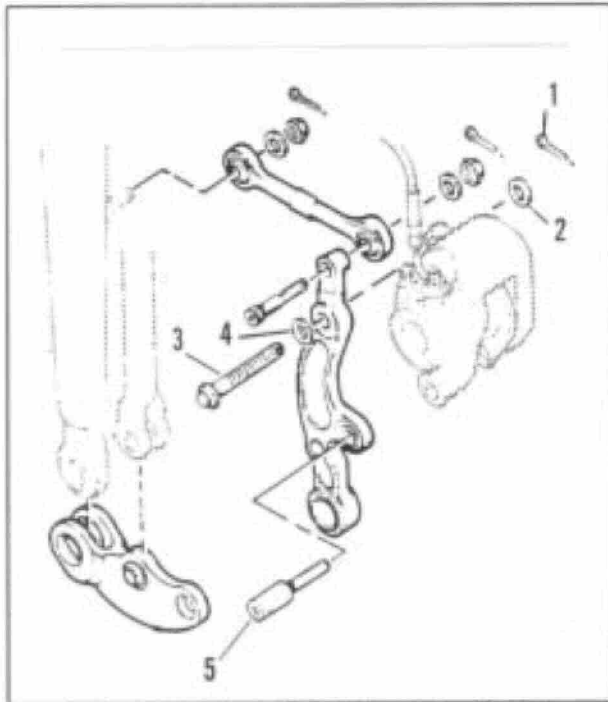


Figure 3. Front Brake Mounting - FXSTS

3. Perform Steps 1 through 8 of FRONT BRAKE CALIPERS (ALL MODELS EXCEPT FXSTS).
4. Install caliper over disc; install upper mounting bolt (3), washer (4), and lower bolt (5).
5. Tighten upper mounting bolt to 42 - 48 ft-lbs torque; tighten lower bolt to 25 - 35 ft-lbs torque.
6. Install washer (2) and cotter pin (1) on upper bolt (3).
7. Pump brake lever until pads contact brake disc.

REAR BRAKE CALIPER (ALL MODELS)

NOTE

To remove and replace the rear brake caliper pads, follow the instructions given in the applicable 1991 Service Manuals. A rivet head on the pad insulator requires that the piston be retracted farther than with previous pads. To retract the piston, remove the caliper mounting fasteners. Apply hand pressure alternately to each side of the caliper in order to force the piston into caliper. **DO NOT REMOVE BRAKE LINE WHILE REPLACING PADS. REUSE ABUTMENT SHIMS INSTALLED ON THE CALIPER BRACKETS.**

Credit Procedure

1. After servicing each vehicle, be sure to completely fill out the enclosed Safety Recall 076 Addendum Card. Fill in your dealer account number, the vehicle identification number, and your dealership name and address. You must sign and date the card.
2. Package the original pads along with the properly-completed card.
3. Attach a return address P-label (Form Number 1248) to the outside of the package; send the package to Harley-Davidson.
4. Upon receipt of the replaced pads and the properly-completed Safety Recall 076 Addendum Card, you will be credited for labor as specified in Table II below. Credit will not be issued for parts since they were shipped along with the motorcycle. These labor times include an additional 0.1 hr. for dealer administrative time.

Table II. Brake Pad Replacement Labor Credit

Model	Hour Per Caliper		Total Credit (Includes 0.1 hr. for admin. time)
	Front	Rear	
FLHTC, FLHS, FLTC-ULTRA, FLHTC-ULTRA, FLHTP - Windshield & Fairing models	0.2 (0.1 per caliper)	0.5	0.8
XLH 883, XLH 1200, XLH 883 HUGGER, XLH 883 DELUXE	0.1	0.1	0.3
FXRS-SP, FXRS-CONV	0.2 (0.1 per caliper)	0.1	0.4
FXR, FXRS, FXLR	0.1	0.1	0.3
FLSTC, FLSTF, FXSTC, FXSTS	0.1	0.2	0.4
FXDB-DAYTONA	0.2	0.1	0.4
FXRT, FXRP - Windshield & Fairing models	0.2 (0.1 per caliper)	0.3	0.6