



INSTRUCTIONS

-J01078

REV. 10-31-97

Kit Numbers 65088-98 and 65089-98

XL 1200, XL 883 HDI EXHAUST

General

These parts are designed to be installed on 1995 and later XL 1200 and XL 883 HDI model motorcycles:

Kit contents:

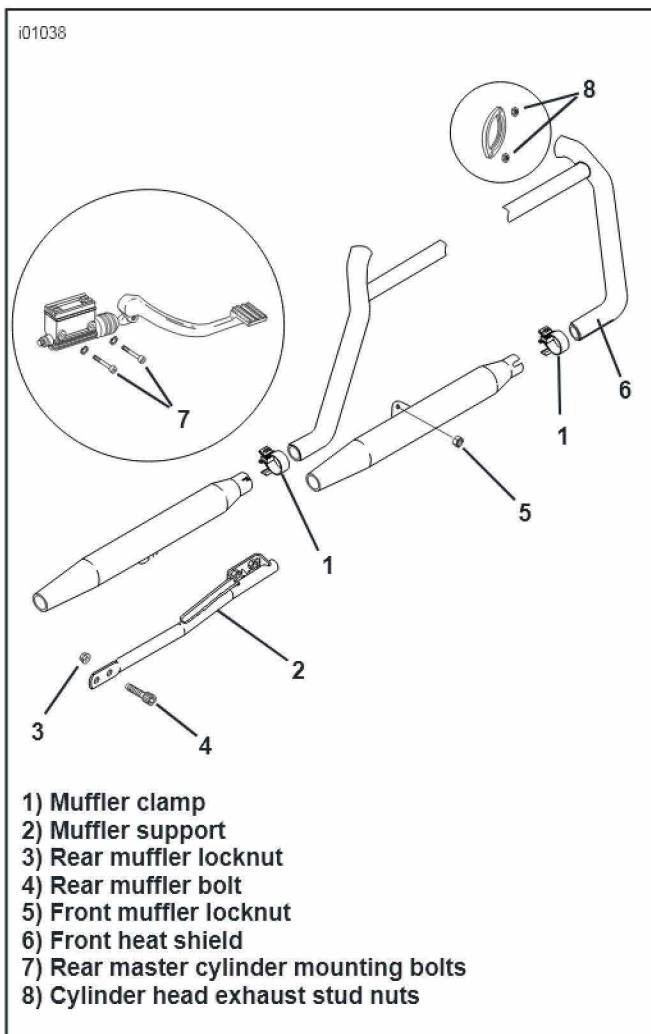
Qty	Description	Part Number
1	Front muffler	65193-98
1	Rear muffler	65312-98
2	Muffler clamps	65296-95
1	XL 1200 Noise label	15365-98
1	XL 883 Noise label	15366-98

⚠WARNING

To avoid accidental start-up of motorcycle, and possible personal injury, disconnect the battery cables (negative cable first) before performing any of the following procedures. If the positive cable should contact ground with the negative cable installed, the resulting sparks may cause a battery explosion resulting in personal injury.

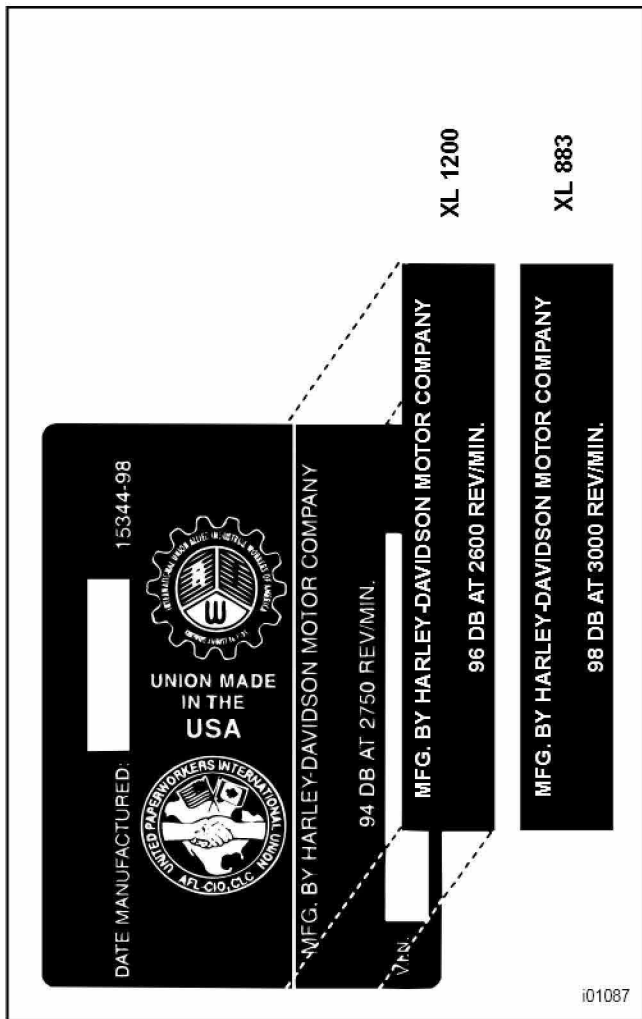
⚠WARNING

To avoid personal injury, do not smoke or allow open flame or sparks anywhere in the area when working on fuel system components. Gasoline is extremely flammable and highly explosive under certain conditions.



Installing Mufflers

1. Loosen the following to allow installation:
 - Clamps holding front heat shield (6) in place
 - Front cylinder head exhaust stud nuts (8)
 - Rear master cylinder mounting bolts (7)
2. Install front muffler with new muffler clamp (1) on head pipe. Position muffler flange over threaded mounting stud.
3. Tighten nuts (8) on front cylinder head exhaust studs to 6-8 ft-lbs (8-11 Nm).
4. Tighten muffler clamp (1) to 45-65 ft-lbs (61-81 Nm).
5. Install locknut over mounting stud and tighten to 20-40 ft-lbs (27-54 Nm).
6. Retighten front heat shield clamps.
7. Position rear muffler with new muffler clamp on head pipe.
8. Install bolt and locknut through forward hole in muffler support and tighten to 10-15 ft-lbs (14-20 Nm).
9. Tighten muffler clamp to 45-65 ft-lbs (61-81 Nm).
10. Retighten rear master cylinder mounting bolts to 155-190 in-lbs (17.5-21.5 Nm).
11. Affix applicable noise label as described on page 2.
12. Test ride motorcycles to check for proper operation.



Noise Label

Place applicable noise label from kit on top of existing VIN label as shown. VIN label is located on frame down tube.

Etikett mit Lärhinweisen wie gezeigt über dem VIN-Etikett anbringen. Das VIN-Etikett mit der Fahrzeugnummer befindet sich auf dem Rahmenrohr.

Placer l'étiquette sur le bruit provenant du kit sur l'étiquette existante du numéro d'identification du véhicule. Cette dernière se trouve sur le tube de cadre descendant.

Coloque la etiqueta de aviso de ruido del juego sobre la etiqueta de aviso actual del VIN, como se muestra. La etiqueta de aviso del VIN está ubicada en el tubo vertical del cuadro.

Porre l'etichetta sui disturbi dal kit sopra l'etichetta VIN esistente, come riportato in figura. L'etichetta VIN è situata sulla trave discendente del telaio.