



INSTRUCTIONS

-J01019

REV. 12-1-90

Kit Number 60365-89

XLH CHAIN GUARD

General

This kit is designed for installation on late 1989 and later XLH 883/1200 model motorcycles equipped with final chain drive.

Kit contents:

QTY	DESCRIPTION	PART NO.
1	Chain guard	60365-89

NOTE

If the chain guard is to be used on a 1991 model vehicle it will be necessary to purchase and install rubber spacer 75101-82 to prevent possible vibration. See Step 1 under Installation.

Installation

- See Figure 1. Remove right lower shock absorber nut (4), chain guard front mounting bolt (6), washer (5) and nut (7). Remove original chain guard (1). Save hardware for later installation. If installing chain guard on a 1991 vehicle peel the backing off the rubber spacer Part No. 75101-82 and press firmly onto the outside of the guard in the location shown in the inset of Figure 1.
- Position new chain guard (1), from kit, with rear mounting bracket inboard of shock absorber mounting lug and with front bracket inboard of chain guard mounting lug.
- Insert original shock mounting bolt (2) through washer (3), shock absorber (10), shock absorber mounting lug on swing arm and chain guard rear bracket. Secure with nut (4) tighten to 50-55 ft-lbs (68-75 Nm) torque.
- Place original washer (5) on original bolt (6) removed from front chain guard mount. Insert bolt through front lug at swing arm and through bracket at front of chain guard. Thread original nut (7) on bolt and tighten to 12 ft-lbs (16 Nm) torque.
- Test vehicle to be sure chain has clearance and there is no interference with chain guard.

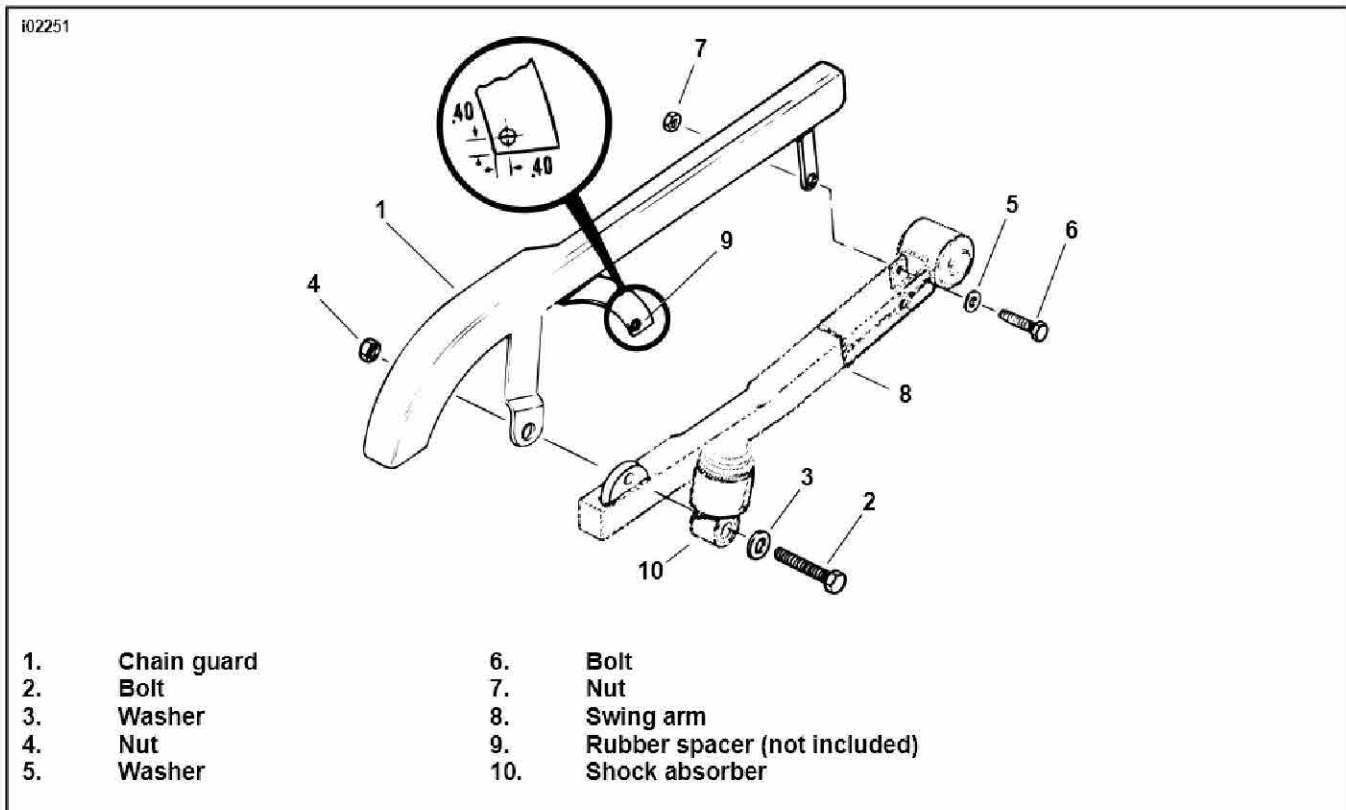


Figure 1. Chain Guard Mounting