



INSTRUCTIONS

-J01006

REV. 3-1-95

Kit Number 56078-92

XLH 883 SPORTSTER BUCKHORN HANDLEBAR KIT

General

This kit is designed for installation on 1986 - 1995 XLH 883 Sportster models.

A Service Manual for your motorcycle is available from your Harley-Davidson Dealer.

QTY	DESCRIPTION
-----	-------------

1	Washer
1	Gasket, clutch cover
1	Gasket
1	Gasket, cover
1	Gasket, primary cover
1	Seal, oil
1	Clutch cable
2	Gasket, cylinder
2	Gasket, cylinder
2	Gasket, brake
2	Gasket, banjo
1	Pin
1	Brake line, front
2	Gasket, banjo
4	Retainer, wire
1	Handlebar
1	Handlebar grip
2	Cable strap, double loop

NOTE

For 1986-1991 vehicles, Handlebar Switch Kit, Part No. 56075-91, must be installed with this kit.

Installation

WARNING

The rider's safety depends on the correct installation of this kit. Use the appropriate Service Manual procedures. If the procedures are not within your capabilities, or if you do not have the correct tools, have your Harley-Davidson dealer perform this installation.

NOTE

The following installation steps are intended to serve as a general guideline for installation sequence. An asterisk (*) marks each step that has a detailed procedure within the Service Manual. Refer to the Service Manual for important information concerning these steps.

WARNING

To avoid accidental start-up of motorcycle, and possible personal injury, disconnect the battery cables (negative cable first) before performing any of the following procedures. If the battery should contact ground with the negative cable installed, the resulting sparks may cause a battery explosion resulting in death or serious personal injury.

1. Disconnect battery (negative cable first).

WARNING

After completing repairs or bleeding the system, always test motorcycle brakes at low speed. If brakes are not operating properly or braking efficiency is poor, testing at high speeds could result in death or serious injury.

2. *Drain front brake system. Remove front brake hose.
3. *Remove headlamp cover.
4. *Remove gauge(s). Carefully let wires support gauge(s).
5. *Remove hand controls and switches. Let wires carefully support the switches.
6. *Disconnect throttle cables at throttle control grip.
7. Remove handlebars.
8. Install buckhorns, but do not fully tighten handlebar clamp screws. Be sure lockwashers, if equipped, are installed under narrow side of handlebar top clamp.
9. *Install gauge(s) using spacers between the gauge bracket and top handlebar clamp.
10. Adjust the handlebars to desired position. Snug rear screws so clamp halves seat firmly on lockwasher. Tighten front screws to 12-15 ft-lbs torque. Finally tighten rear screws to 12-15 ft-lbs torque. A slight gap between clamp halves should exist at the front.
11. Install new left handgrip:
 - a. Using a piece of emery cloth, rough grip end of left buckhorn handlebar.

NOTE

Before applying adhesive in the next step, clean the left buckhorn handlebar with acetone.

- b. Apply LOCTITE PRISM PRIMER (770) to inside of handgrip. Remove any excess PRISM PRIMER with a clean cloth. Wait two minutes for PRISM PRIMER to set before attempting the next step.
- c. Apply LOCTITE PRISM SUPERBONDER (411) to inside of handgrip. Install new handgrip on left buckhorn handlebar.

NOTE

SUPERBONDER will set in four minutes and be fully cured in 24 hours.

Steps 12-17 are for 1986 to 1991 vehicles only.

12. *Remove headlamp from headlamp housing.
13. Remove angle bushings that clamp switches' wiring harness to headlamp housing.
14. Install new switch wires through headlamp housing.
15. Use old switch wires as a guide to correctly install the new switch wires. Match the color codes of switch wires. Disconnect old wires, one at a time, and replace each with new, correctly color-coded wire. Do one at a time to avoid confusion. Replace connectors with new ones.
16. Remove the old switch wires from headlamp housing. Install new angle bushings in headlamp housing.
17. *Install headlamp cover. Install headlamp.
18. ***On 1986-1993 Models.** Remove primary chaincase cover.

On All Models. Remove the old clutch cable and install new clutch cable from kit.

On 1994 and 1995 Models. Replace clutch cover gasket with new gasket from kit.

19. ***On 1986-1993 Models.** Install primary chaincase cover using the correct new gasket. **1986-1990 models** use gasket with 10 mounting holes. **1991-1993 models** use gasket with 13 mounting holes. **On 1986-1993 models,** replace the cover shifter shaft oil seal and footrest stud gasket.

The following steps apply to all models.

20. *Place throttle control grip in position. Install throttle cables and right handlebar switch assembly. Use new wire harness retainers to secure the wires to the handlebars. Adjust throttle cables, following instructions in appropriate Service Manual.
21. *Install front brake master cylinder.
22. *Install left handlebar switch controls. Use new wire harness retainers to secure the wires to the handlebars. Install clutch hand controls and adjust clutch.

23. *Install new brake hose using correct new banjo fitting gaskets (refer to Service Manual to determine which type of gasket to install, and to determine the proper torque value for the banjo bolts). Cable tie brake hose (Except 1995 models) to speedometer cable.
24. *Fill front brake master cylinder. Bleed front brake system.

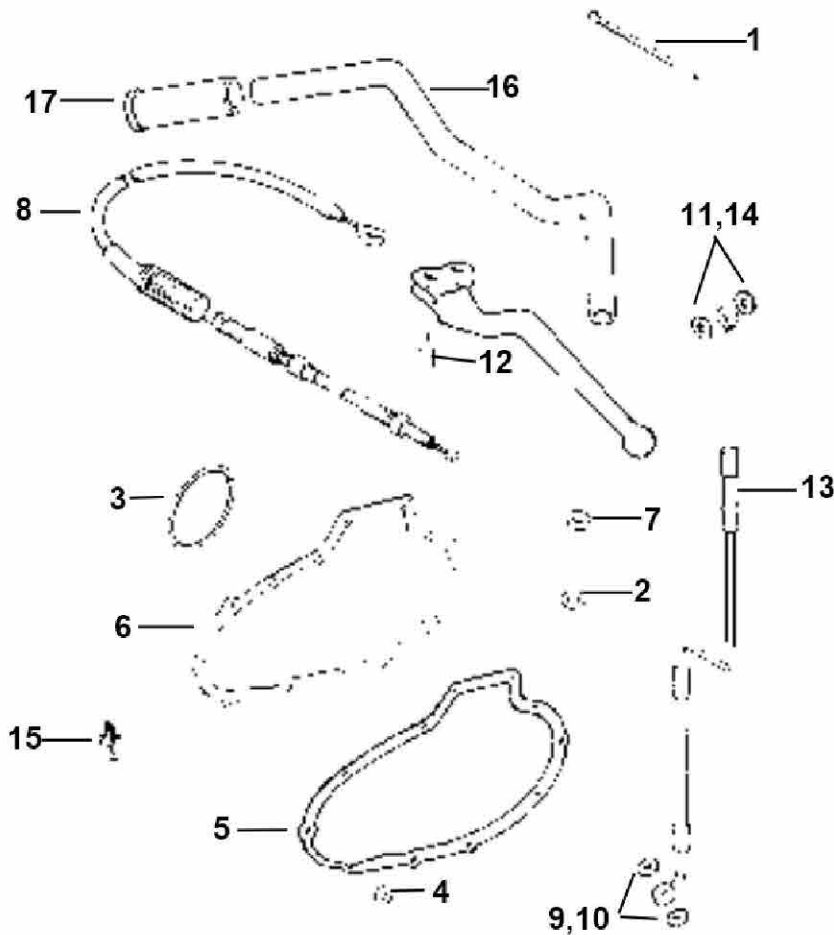
WARNING

Always test motorcycle brakes at low speed after servicing or bleeding brake system. If brake system is improperly installed, brakes could fail, cause rider to lose control, resulting in possible personal injury. We recommend that all brake repairs be performed by a Harley-Davidson dealer or other qualified mechanic.

25. Test clutch, electrical, and brake functions. Adjust headlamp.



100369



Item	Description	Part Number	Item	Description	Part Number
1	Cable strap, double loop	10081	10	Gasket, brake	41731-88A
2	Washer	25437-86	11	Gasket, banjo	41733-88
3	Gasket, clutch cover	25463-94	12	Pin	45036-88
4	Gasket	34624-77	13	Brake line, front	45121-88B
5	Gasket, cover	34955-75	14	Gasket, banjo	45583-83
6	Gasket, primary cover	34955-89A	15	Retainer, wire	56073-83
7	Seal, oil	37101-84	16	Handlebar	56081-82A
8	Clutch cable	38621-86A	17	Handlebar grip	56206-94A
9	Gasket, cylinder	41731-82			