



INSTRUCTIONS

-J00896

REV. 6-1-97

Kit Numbers 32571-98 and 32590-98

“FLAMES” TIMER COVER

General

These kits are designed for all Evolution engines.

See Service Parts illustration below for items contained in this kit.

Installation

⚠WARNING

To avoid accidental start-up of vehicle and possible personal injury, disconnect the battery cables before proceeding. Always disconnect the negative cable first. If the positive cable should contact ground with the negative cable installed, the resulting sparks may cause a battery explosion resulting in personal injury.

1. Use a 3/8 in. drill bit and drill the heads off the original timer cover rivets. Remove original timer cover.

NOTE

To make the cam position sensor tamper proof, follow steps 2 through 4. If the cam position sensor is not required to be tamper proof, skip steps 2 through 4.

2. Remove and discard inner cover retaining screws. Leave gasket (if used) and inner cover in position.
3. See Service Parts illustration. Place washers (1) over rivets (2) and place rivets into inner cover holes so the backs of the rivets go into the sensor plate screws' tapped holes.
4. Use a standard rivet tool and install rivets, securing inner cover to sensor plate screws.
5. Use the self-tapping screw to cut threads into the remaining inner cover holes. Discard screw after use.
6. Place new timer cover in position over inner cover and secure with chrome screws (4).

⚠CAUTION

If the inner timer cover has been riveted in place and access to the cam position sensor is required, use a left hand drill and carefully remove the rivet heads. If a right hand drill is used, the sensor plate screw heads could break off when trying to remove the rivet.



Service Parts

Part No. 32571-98

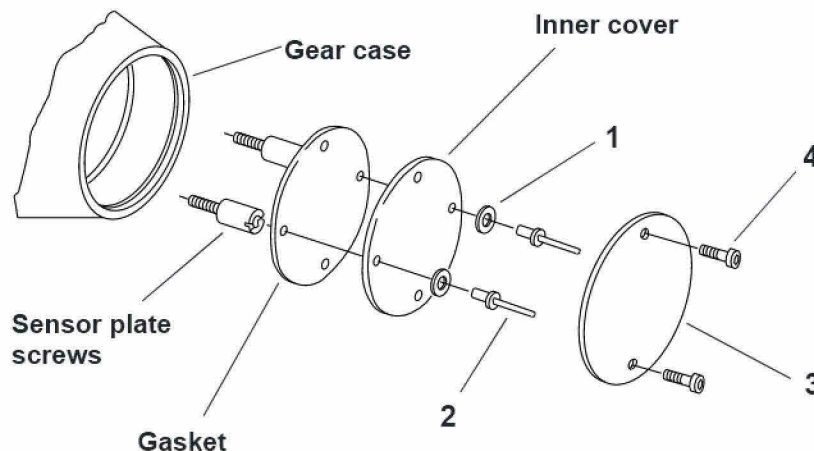
Date 6/97

“Flames” Timer Cover

NOTE

Illustration shows a generic styled timer cover.

sp32579



Item	Description	Part No.	Item	Description	Part No.
1	Washers (2)	6335	4	Timer cover screws (2)	94555-97
2	Rivets (2)	8501	5	Self-tapping screw (not shown)	3659
3	Timer cover	not sold separately			