



INSTRUCTIONS

-J00751

REV. 10-18-00

Kit Numbers 79052-01 and 79073-01

SPORTSTER LEATHER SADDLEBAG KITS

General

These kits are designed for installation on 1994 and later XL model motorcycles (except XL 1200 Sport.)

WARNING

Additional weight can affect a motorcycle's stability, handling characteristics, and safe operating speed. The rider must be responsible for safe operation of the motorcycle when carrying additional weight. The following guideline should be used when a motorcycle is equipped with saddlebags and carrying passengers and cargo: do not exceed 7 lbs. (3.17 kg) maximum load in each saddlebag. Improper loading can alter vehicle handling which could result in death or serious injury.

NOTE

A pick tool (Snap-On TT600-3) will be required for removing and reinstalling a multilock amp connector.

NOTE

A Service Manual for your vehicle is available from your Harley-Davidson Dealer.

Installation- Hugger Models Only (94-97)

WARNING

To perform the following steps for Hugger Models only, fender and frame must be sufficiently supported, as both shocks will need to be removed at the same time. An improperly supported vehicle could result in death or serious injury.

WARNING

A Service Manual is needed to install this kit. The rider's safety depends upon the correct installation of this kit. If the procedure is not within your capabilities or you do not have the correct tools, have your Harley-Davidson dealer perform the installation. Improper installation of this kit could result in death or serious injury.

1. Remove seat, sissy bar and sideplate, if applicable. Retain hardware for reinstallation. Disconnect battery, negative cable first.

WARNING

To protect against shock and accidental start-up of vehicle, disconnect the battery cables, negative cable first, before proceeding. Inadequate safety precautions could result in death or serious injury.

WARNING

Always disconnect the negative battery cable first. If the positive battery cable should contact ground with the negative cable installed, the resulting sparks may cause a battery explosion which could result in death or serious injury.

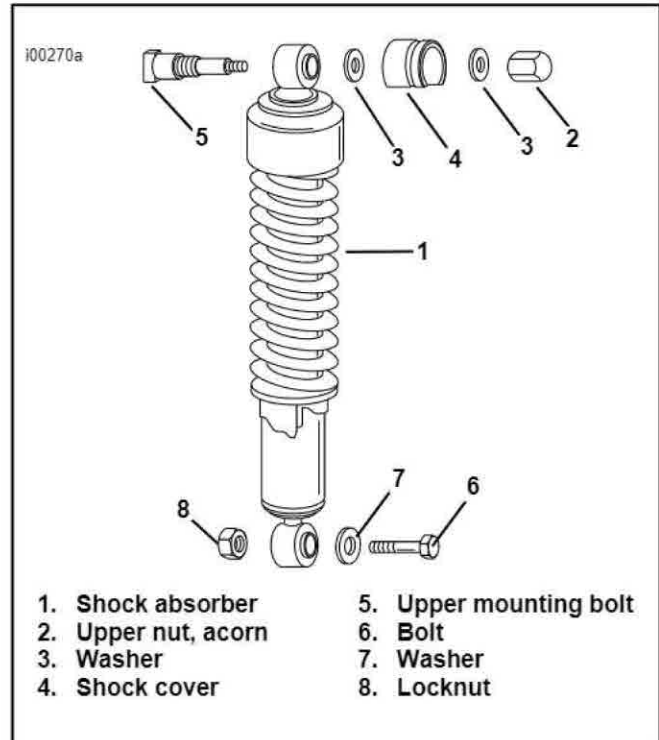


Figure 1a. Shock Absorber Removal Hugger Models Only

2. Properly support motorcycle under frame to prepare for removal of right and left shocks.
3. Remove rear button head screw on both sides of fender.
4. See Figure 1a. With rear fender and frame securely supported, remove left and right shocks by removing upper nut (2), washer(s) (3) and shock cover (4). Remove bolt (6), washer (7) and locknut (8) at lower shock mount. Remove shock.
5. See Service Parts illustration. Install long 4-1/2 in. bolt (11) from kit, from inside of fender out through rear holes where button head screws were removed in Step 3.
6. Reinstall shocks using original hardware. Torque acorn nut (2) to 21-35 ft-lbs (28.5-47.5 N-m). Torque locknut (8) to 30-50 ft-lbs (40.7-67.8 N-m).

Rear Turn Signal Relocation

NOTE

Rear turn signals must be relocated before saddlebags can be installed.

WARNING

To protect against shock and accidental start-up of vehicle, disconnect the battery cables, negative cable first, before proceeding. Inadequate safety precautions could result in death or serious injury.

WARNING

Always disconnect the negative battery cable first. If the positive battery cable should contact ground with the negative cable installed, the resulting sparks may cause a battery explosion which could result in death or serious injury.

1. Remove seat and disconnect battery cables, negative cable first. Remove sissy bar and sideplates, if installed. Retain all parts and hardware.

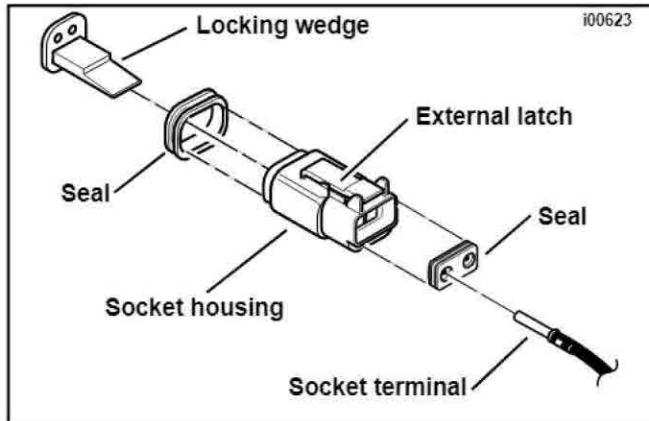


Figure 1. Rear Turn Signal Electrical Connector

NOTE

On 1999 and later vehicles, the multilock amp connector is under the lens plate of the taillight. 1996-1998 vehicles have an 8-place multilock amp connector as shown in Figure 2. 1994-1995 vehicles have a Deutsch connector as shown in Figure 1.

NOTE

Before performing next step, notice location of wire colors in connector so wires can be reinstalled in same positions later.

2. **1994-1995 vehicles:** See Figure 1. Follow the rear turn signal wires to the two connectors located under the seat. Separate the socket halves of the rear turn signal connectors by pressing the external latch of each connector and rocking the socket half back and forth until free. Leave the pin halves of the connectors attached to the frame. Remove each connector's orange secondary locking wedge by inserting the blade of a small screwdriver in the locking wedge groove. Turn the screwdriver 90 degrees to pop the wedge up.

Gently pull the wires from each connector while releasing the small locking tabs on inside of connector, using a small flat head screwdriver.

NOTE

See the applicable Service Manual for more detailed instructions on amp multilock electrical connector installation and removal.

NOTE

On 1996 - 1998 vehicles, the multilock amp connector is under the seat. See the applicable Service Manual for more detailed instructions.

NOTE

On 1999 and later vehicles the multilock amp connector is under the lens plate of the taillight. See the applicable Service Manual for more detailed instructions.

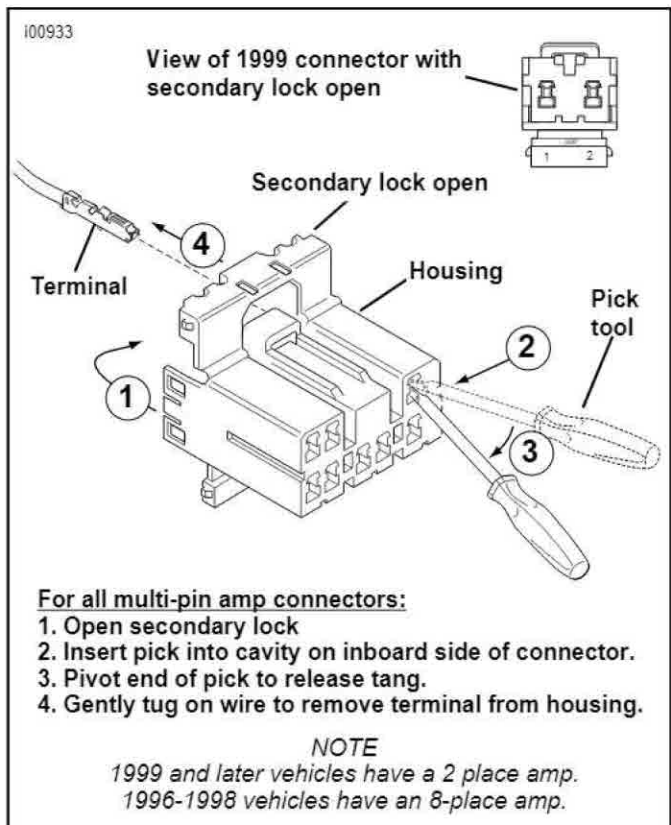


Figure 2. Amp Multilock Electrical Connectors

3. See Figure 2. On 1999 and later models, it is necessary to remove the taillight lens to access the amp multilock connector. On 1996-1998 vehicles with multilock amp connectors, remove the connector from the retaining device according to the applicable Service Manual instructions:
 - a. Open the secondary lock.
 - b. Insert the pick into cavity on inboard side of connector.
 - c. Pivot end of pick to release tang.
 - d. Gently tug on wire to remove terminal from housing.

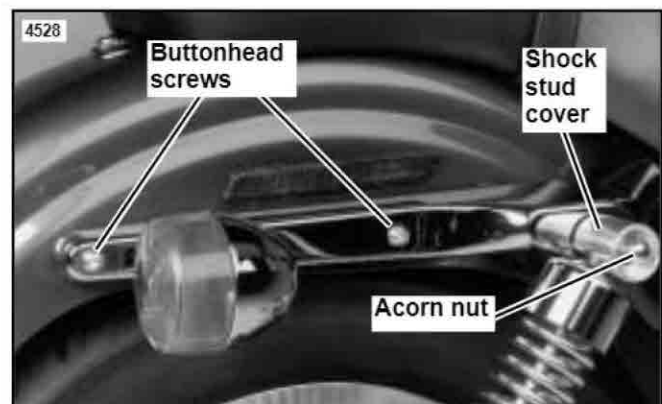


Figure 3. Rear Fender Support

NOTE

Perform the following procedures one side at a time until instructed to go to opposite side of vehicle.

4. See Figure 3. Remove buttonhead screws and locknuts that secure fender support cover to frame. Retain hardware for later reinstallation.

5. Remove the nut on inside of fender securing rear turn signal to fender. Retain nut.
6. **For 1994 to 1999 models**, remove the rear shock absorber upper acorn nut, washers, and shock stud cover. For 2000 and later models, remove 1/2-13 hex head screw, washer and shock cover. This will allow you to pull the fender support cover out far enough to access the stud that holds the rear turn signal in place.
7. With a deep well socket, remove rear turn signal stud from fender support cover, and remove rear turn signal. Discard stud.
8. Take note of how rear turn signal wire is routed (for later re-routing).
9. See Service Parts illustration. Using a small piece of tape, tape washer (2) from kit onto frame over hole from which rear turn signal stud was removed.
10. Remove lens from rear turn signal. Remove bulb from rear turn signal. Retain all parts.
11. **All 1994-1997 models, except Huggers**, insert 4-1/2 in. bolt (11), from inside of fender, out through rearmost hole in fender frame. Leave loosely in place.

CAUTION

Use caution not to scratch chrome surface of turn signal housing while drilling out threads.

All 1998 and later models, see Service Parts illustration. Drill out threads in turn signal housing using a 13/32 inch drill bit. Use caution not to scratch chrome surface of turn signal housing. Place thin spacer (2) and bushing (1) on 4-1/4 inch bolt (3) near threads. Install bolt through turn signal housing. Bushing should be level with inside boss in turn signal housing.

NOTE

Narrow end of relocation pad should point to rear of motorcycle.

12. See Service Parts illustration. Insert wire from rear turn signal lamp, through center hole in relocation pad, along channel on the inside of the pad and through third hole from rear in fender support cover. Re-route wire back along inside of fender support cover and retape into place on back of fender support cover.
13. **Non-sissy bar models only.**
 - **On 1994-1997 models**, see Service Parts illustration. Install rear turn signal with relocation pad and fender support cover onto fender using 4-1/2 in. bolt (11) inserted through rear of fender (step 11). Tighten bolt until snug.

On 1998 and later models, see Service Parts illustration. Place Loctite on threads of 4-1/4 inch bolt (3). Install rear directional with relocation pad (9) and fender support cover onto fender with 4-1/4 inch bolt inserted through turn signal housing in step 11.
 - Reinstall original locknut and screw removed from forwardmost hole in fender support cover. Tighten finger tight.

Models with sissy bars.

 - Place fender support cover over fender support. Reinstall sissy bar sideplate over cover and loosely secure using original hardware.

- **On 1994-1997 models**, see Service Parts illustration. Install turn signal lamp onto relocation pad with 4-1/2 in. bolt (11) inserted through fender (step 11). Tighten bolt until just snug.

On 1998 and later models, see Service Parts illustration. Install turn signal assembly onto relocation pad (9) using 4-1/4 inch bolt (3) inserted through turn signal housing in Step 11. Tighten bolt until snug.

14. **On 1994-1997 models**, see Service Parts illustration. Tighten 4-1/2 in. rear turn signal bolt from inside of fender to 12 ft-lbs. Install nut from kit (10) onto bolt at inside of turn signal housing. Tighten securely.

On 1998 and later models, see Service Parts illustration. Tighten 4-1/4 inch rear turn signal bolt (3) from inside of turn signal housing to 12 ft-lbs.
15. Tighten button head screw in forwardmost hole in fender support cover to 12 ft-lbs.
16. Reinstall bulb and rear turn signal lens.
17. Repeat steps 4 through 15 for opposite side of motorcycle.
18. **For 1994-1995 models:** Reroute rear turn signal wires through frame. Reinsert wires into rubber connector seal. Making sure wire colors match wires in pin half of connector, push wires into connector until wires snap into place. Gently tug on wires to be sure connection is made. Reinstall secondary lock into connector and mate connector halves.

NOTE

See the applicable Service Manual for more detailed instructions on installing and removing amp multilock electrical connectors.

On 1996-1998 models: Reroute rear directional wires through frame.

On 1999 and later models: Reroute rear directional wires under fender to taillight.

From the secondary lock side of the connector, insert the terminal into its respective numbered chamber until it snaps in place according to Service Manual instructions. For proper fit, the slot in the terminal must face the tang in the chamber.

Gently tug on wire end to verify that the terminal is locked in place and will not back out of chamber. Rotate the hinged secondary lock inward until tabs fully engage latches on both sides of connector. Insert the socket housing into the pin housing until it snaps into place. Reroute wires as removed in Step 8.

⚠ WARNING

Always connect the positive battery cable first. If the positive cable should contact ground with the negative cable installed, the resulting sparks may cause a battery explosion which could result in death or serious injury.

19. Reconnect battery (positive cable first), and test rear turn signals for proper operation. Re-install seat and sissy bar if applicable.

⚠ WARNING

After installing seat, pull upward on front of seat to be sure it is locked in position. If seat is loose, it could shift during vehicle operation, resulting in loss of control of vehicle and death or serious injury.

Saddlebag Installation

CAUTION

The flat washer (17) must be installed in the location shown in the Service Parts sheet. If the washer is not installed in the correct location, the relocation pad could crack when tightening the 3 in. bolt (7) if sideplates are used, or the saddlebag bracket could be misaligned if sideplates are not used.

1. Align saddlebag bracket front mount hole with hole on fender as shown in Service Parts illustration.
2. Insert 3 1/2 in. bolt (5) through fender, fender support and saddlebag bracket front as shown in Service Parts illustration. Tighten finger tight with one locknut (4) and washer (8).
3. Insert bolt (7) through rear of saddlebag bracket, fender support and fender as shown in Service Parts illustration. Tighten finger tight with locknut (4) and washer (8).
4. Tighten all hardware to 17 ft-lbs.
5. Repeat steps 1-4 for opposite side.

NOTE

Two reflectors have been included with this kit to be mounted on saddlebags.

WARNING

Federal Motor Vehicle Safety Standard (FMVSS) 108 requires all motorcycles to be equipped with side reflectors. Install, or have your dealer install, the reflectors supplied with this kit, following the instructions in steps 8, 9, and 10 below. The mounted saddlebags will cover the factory installed reflectors on some motorcycles. This loss of visibility to other motorists could result in death or serious injury.

6. Remove adhesive backing from left reflector (12).
7. Center the left reflector (12) in the lower rear corner of the left saddlebag and press firmly to adhere to saddlebag face.
8. Repeat step 7 to mount right reflector (13) on right saddlebag.

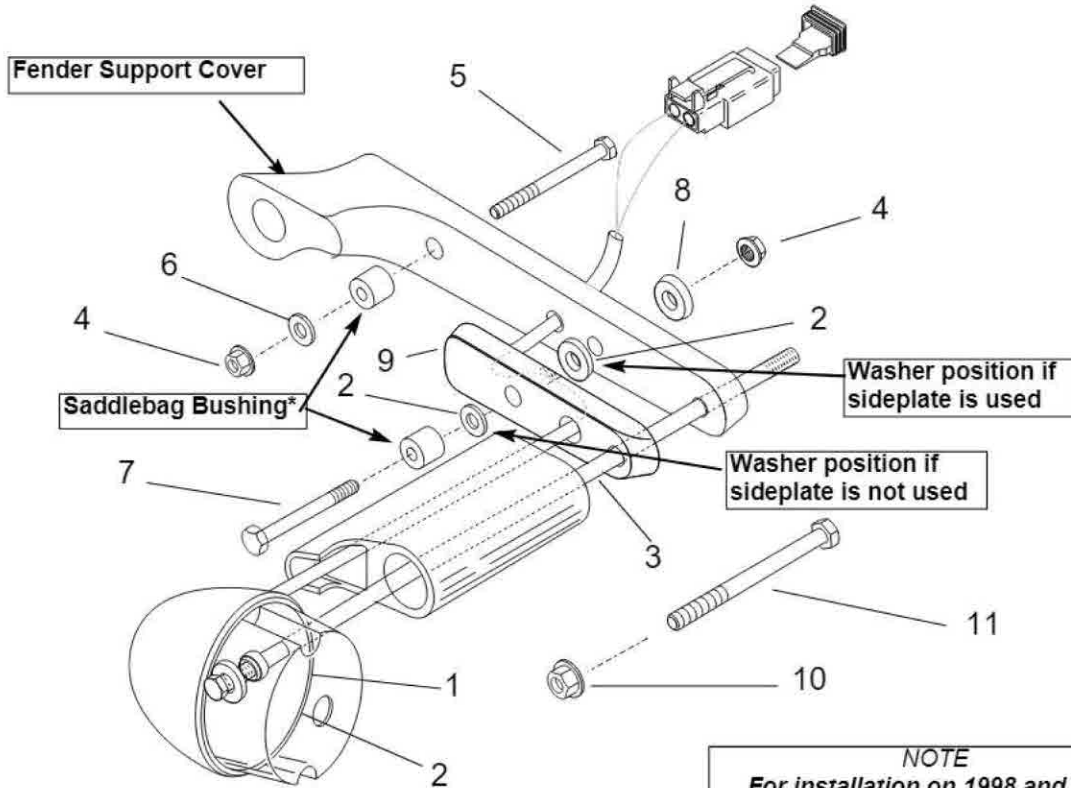


Service Parts

Part No. 79052-01, 79073-01 | Date 10/00

Sportster Leather Saddlebag Kits

i0994b.eps



NOTE
 For installation on 1998 and later models, items 1, 2 and 3 are used.
 For installation on 1997 and earlier models, items 10 and 11 are used in place of items 1, 2 and 3.

TEM	DESCRIPTION	PART NO.	ITEM	DESCRIPTION	PART NO.
1	Bushing (2)	61778-98	13	Reflector, right (Not shown)	59287-92
2	Washer (4)	6109			
3	Bolt, hex cap, 5/16-18 x 4.25 in. (2)	4140		<i>Kit Number 79052-01</i>	
4	Locknut (4)	7531	14	Saddlebag, left (Not shown)	Not sold
5	Bolt, hex cap, 5/16-18 x 3.5 in. (2)	3427	15	Saddlebag, right (Not shown)	Not sold
6	Washer (2)	6116			
7	Bolt, hex cap, 5/16-18 x 3.0 in. (2)	4086		<i>Kit Number 79073-01</i>	
8	Washer (2)	5792	14	Saddlebag, left (Not shown)	Not sold
9	Turn Signal Relocation Pad	68472-94	15	Saddlebag, right (Not shown)	Not sold
10	Locknut (2)	7725			
11	Bolt, hex cap, 5/16-24 x 4.5 in.	4251			
12	Reflector, left (Not shown)	59288-92			

*Not included in kit