



# INSTRUCTIONS

-J00639

REV. 8-5-96

Kit Number 44331-73

## DISC BRAKE CALIPER MOUNTING PIN REPLACEMENT KIT

### General

This kit is designed for replacement of the original riveted type mounting pin in outer brake caliper Part No. 44105-72 with a new mounting stud.

This kit contains the following:

Item	Qty.	Description
1	1	Mounting stud
2	1	Locknut
3	1	Flat washer
4	2	Pin, brake pad
5	1	Bushing, caliper mounting bracket
6	1	Bushing, caliper mounting bracket

### **⚠**WARNING

Because brakes are critical to safety and servicing requires special tools and skills, we recommend you see your dealer for service.

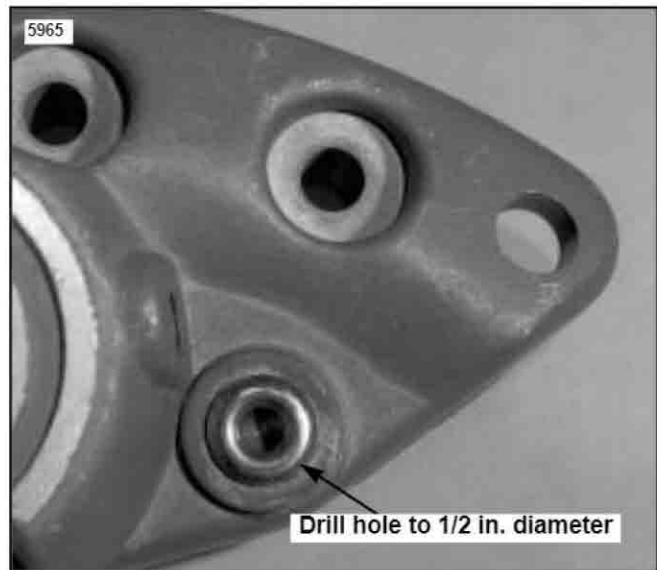


Figure 1. Outer Brake Caliper

### Removal

1. Disconnect hydraulic line and remove outer brake caliper from motorcycle. Remove hydraulic line fitting from caliper. refer to Service Manual for proper procedure.

### NOTE

Do not remove piston from outer caliper half unless there are signs of hydraulic fluid leakage or if the piston is not operating properly. If the piston must be removed refer to Service Manual for proper procedure.

### Installation

1. Place tape over hydraulic line fitting hole to keep chips from entering caliper. Drill out riveted pin from caliper and increase hole size through caliper to 1/2 in. See Figure 1.
2. See Figure 2. Install brake hose in outer caliper half. Apply Teflon pipe sealant to fitting threads, and tighten securely.

### **⚠**CAUTION

Hose will not fit past nut and must be installed prior to assembly of locknut.

3. Slip washer over new mounting stud. If washer has a chamfer, it should face toward threads. No washer is used on nut side.
4. Install stud in outer caliper half. Mounting stud has a slotted head for a large screwdriver or other approximately 3/16 in. thick blade which can be clamped in a vise to keep stud from turning. Assemble nut using an air wrench. Tighten nut to 35-40 ft-lbs.

### NOTE

Nut is self-locking. Use of Loctite, Grade A, is optional.

### **⚠**WARNING

Use only the type of brake fluid which is recommended with brake system.

### **⚠**WARNING

Check brake pads for wear. If pads are worn to 1/16 in. thickness or less, replace them as a set. Brake pads must be replaced only in sets for correct and safe brake operation.

5. Replace brake pad retainer pins.
6. Replace mounting bracket bushings.
7. Reassemble parts and bleed brake system. Refer to Service Manual for proper procedure.

**⚠ WARNING**

Tighten screws which secure caliper halves to each other to 30-35 ft-lbs.

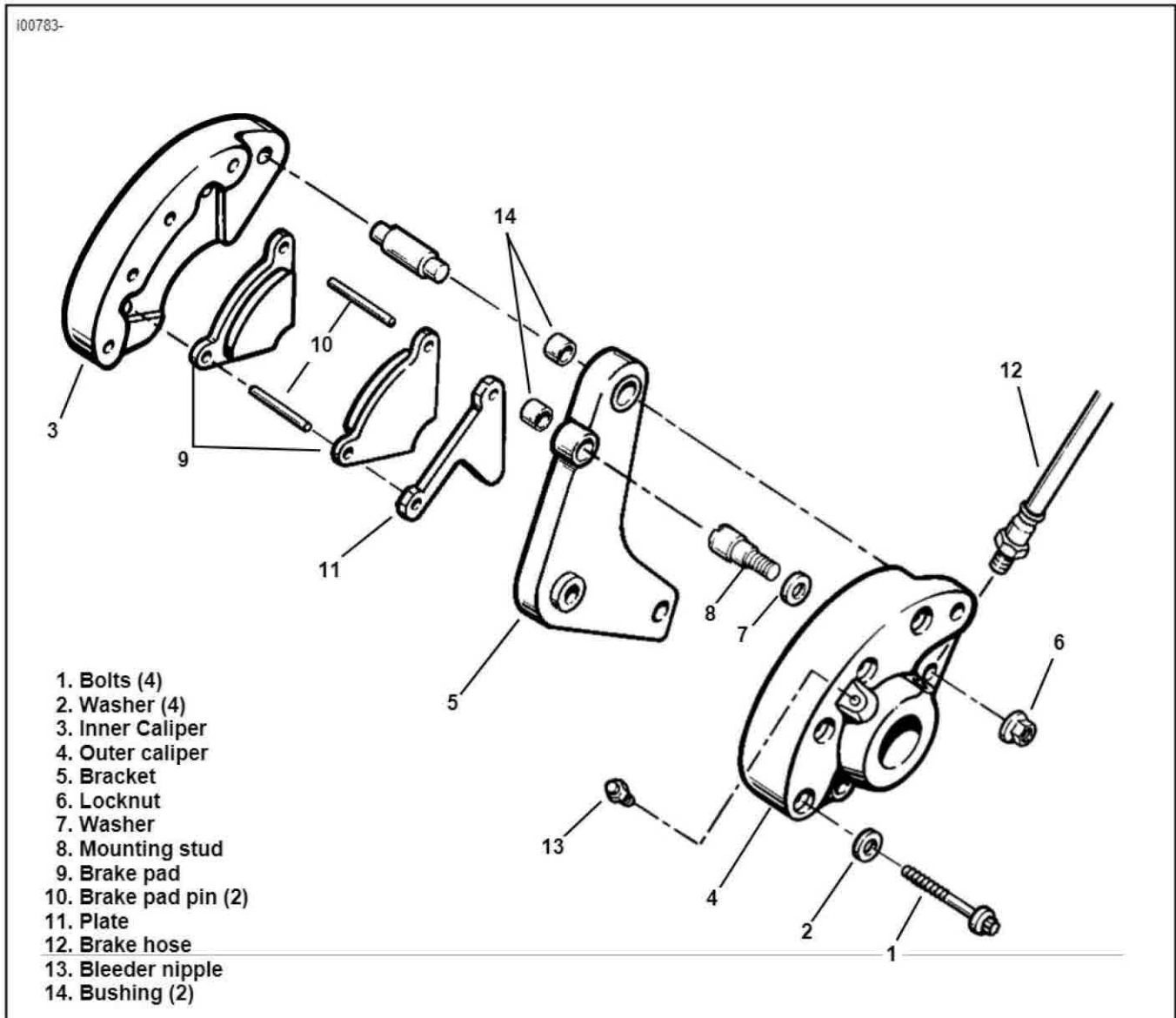


Figure 2. Rear Brake Caliper -- 1978<sup>1/2</sup> - 1980 FL/FX Models

