



# INSTRUCTIONS

-J00621

2003-03-19

## MIRROR KIT

### GENERAL

#### Kit Number

91875-82A, 91875-88A, 91879-82A, 91892-82A, 91892-88A, 91894-82A, 91902-86A, 91902-88A, 91904-86A, 91904-88A, 91909-90A, 91910-90A

#### Models

These kits may be used on all model Harley- Davidson motorcycles.

Table 1. Mirror Kit Description

Kit	Stem Length	Mirror Surface	Mirror Finish	Right/Left Side
91875-82A	Short	Flat	Chrome	Right
91892-82A	Short	Flat	Chrome	Left
91875-88A	Short	Convex	Chrome	Right
91892-88A	Short	Convex	Chrome	Left
91904-86A	Long	Flat	Chrome	Right
91902-86A	Long	Flat	Chrome	Left
91904-88A	Long	Convex	Chrome	Right
91902-88A	Long	Convex	Chrome	Left
91909-90A	Long	Convex	Satin Black	Right
91910-90A	Long	Convex	Satin Black	Left
91879-82	Extra Long	Flat	Chrome	Right
91894-82	Extra Long	Flat	Chrome	Left

### Kit Contents

See Figure 1 and Table 2.

#### NOTE

Three spacers (items 2, 3, and 4) are included with each kit; only one is necessary for mirror assembly. Choose the spacer that is best suited for each motorcycle application.

### INSTALLATION

1. Remove the existing mirror, if present. Discard any lockwashers and acorn nuts used to mount the original mirror.
2. Install one spacer (Item 2, 3, or 4) onto the stem of the new mirror.

#### NOTE

If the acorn nut does not fasten the mirror stem firmly, use the hex nut (8) as a jam nut.

3. Insert the mirror stem into the existing hole in the handlebar control lever. Secure the mirror stem with the flat washer (5), lockwasher (6), and acorn nut (7).

4. Adjust the mirror for proper field of vision and tighten the acorn nut to 16 N·m (12 ft-lbs).
5. Stretch the mirror trim (9) around the outer perimeter of the mirror (1).

### SERVICE PARTS

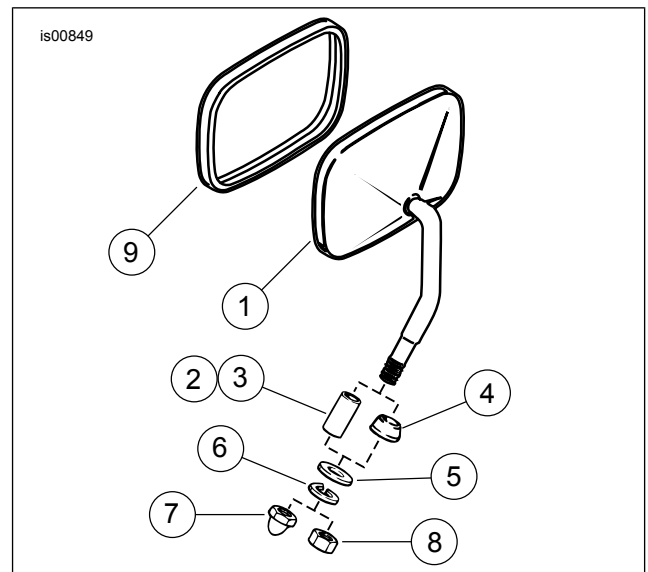


Figure 1. Mirror Assembly

Table 2. Service Parts: Mirror Assembly

Item	Description (Quantity)	Part Number
1	Mirror	Not Sold Separately
2	Spacer, 0.45 in. (Black)	47311-77
3	Spacer, 0.34 in. (Silver)	5978W
4	Spacer, beveled	5714
5	Flat washer, 11/16 in. O.D	6702
6	Lockwasher, 5/16 in.	7041
7	Acorn nut, 5/16-24	7736
8	Hex nut, 5/16-24	7744
9	Mirror trim	Not Sold Separately

