



INSTRUCTIONS

-J00537

REV. 11-20-2000

Kit Numbers 53544-95, 53545-95 and 53609-01

DETACHABLE SPORTSTER® SIDEPLATE KIT

General

This instruction sheet provides directions for installing Detachable Sideplate Kits with an existing sissybar assembly. Appropriate docking hardware must be installed prior to installation of these sideplate kits. Model application and docking hardware are listed below:

Kit No.	XL Model Yr.	Required Docking Kit
53544-95	1990-1993	53529-95A
53545-95	1994 and later	53528-95A (without saddlebags) 53542-95A (with saddlebags)
53609-01	1994 and later (Wrinkle Black)	53528-95A (without saddlebags) 53542-95A (with saddlebags)

NOTE

There are no service parts included with this kit.

Sissybar Installation

See Figure 1. Install new or existing sissybar (2) to detachable sideplates (1) using four hex socket button head screws (3) from sissybar assembly. Tighten button head screws to 8-10 ft-lbs.

Sideplate Installation

1. See Figure 2. While standing behind the motorcycle, place the front sideplate notches (1) into the front docking points (2) as shown in Step 1 of diagram. (Sideplate sissybar assembly in this illustration is not shown in its entirety.)

CAUTION

Rear docking points may be damaged if rotary latches and sideplates are not properly aligned. If the latch does not easily close, do not force. Check alignment as described in Step 2.

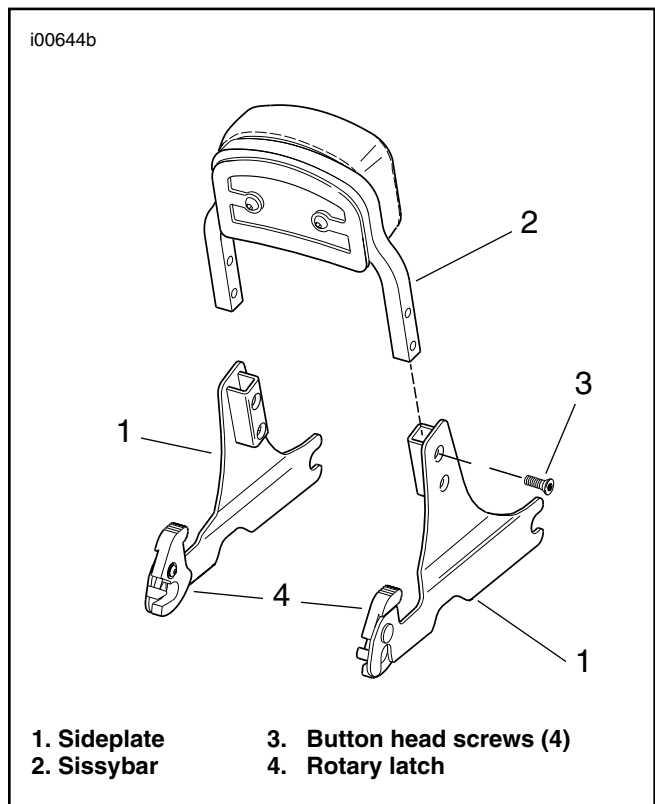
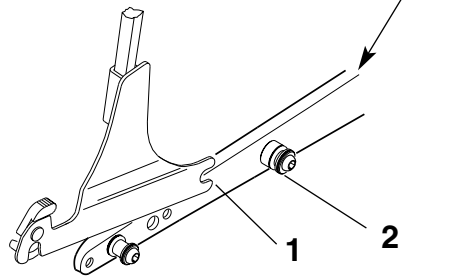
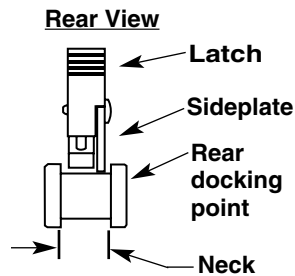
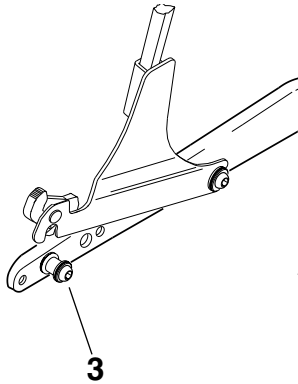


Figure 1. Detachable Sissybar Sideplate Assembly (Typical sideplate shown for illustration purposes.)

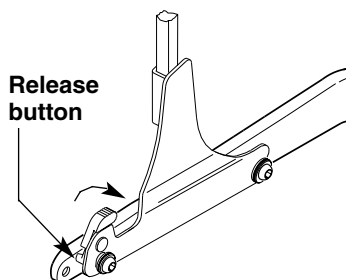
Step 1: Place front notches into front docking points.



Step 2: Pull back rotary latches and lower sideplate onto rear docking points



Step 3: Close rotary latches by pushing latch fully forward.



1. Front sideplate notch
2. Front docking point
3. Rear docking point

2. Pull the rotary latches back into their rearmost position as shown in Step 2 of Figure 2. Position the rear rotary latches over the rear docking points (3), making certain the latches and sideplates fit into the neck of the rear docking points as shown in the rear view of Step 2. This may require some gentle squeezing or spreading of the sideplates.
3. Push downward and close the rotary latches by pressing the latch lever as far forward as it will go as shown in Step 3. You will hear a click when the latch is in place. **If the latch does not easily close, do not force.** Recheck alignment as described in Step 2.

⚠ WARNING

Pull up on sissybar sideplate assembly to ensure that it is safely secured in place. If it is not, sissybar could come loose during operation, startling passenger and/or driver causing loss of control of vehicle and death or serious injury.

5. To remove the sideplates, press the release button shown in the diagram and pull the rotary latch lever back. Carefully lift the rear of the sideplates up and pull the sideplates out of the front docking points.

Figure 2. Attaching Sideplate Sissybar Assembly