



# INSTRUCTIONS

-J00371

REV. 6-13-97

Kit Number 61958-94A

## 1992 -1994 SPORTSTER® FUEL TANK HARDWARE KIT

### General

This kit contains the hardware and components required to install a 3-1/4 gallon fuel tank kit, Part No. 61618-96C, on all 1992 - 1994 XLH models.

See Service Parts page for kit contents.

### Removal – Stock Fuel Tank

#### **⚠WARNING**

To avoid accidental start-up of motorcycle, and possible personal injury, disconnect the battery cables (negative cable first) before performing any of the following procedures. If the positive cable should contact ground with the negative cable installed, the resulting sparks may cause a battery explosion resulting in personal injury.

#### **⚠WARNING**

To avoid personal injury, do not smoke or allow open flame or sparks anywhere in the area when working on fuel system components. Gasoline is extremely flammable and highly explosive under certain conditions.

1. Remove stock fuel tank following instructions given in the applicable Service Manual.

#### **NOTE**

See Figure 1. Discard existing bolts (1 and 2), nuts (7) and large flat washers on rear mount bolt. Also discard throttle cable clip on right side end of front mount bolt.

Use bolts, washers, and nuts supplied in kit. Retain fuel tank cap for reuse on new tank.

2. Remove air cleaner, backplate and hose clamp on fuel hose at carburetor. Remove stock fuel hose and discard.
3. Disconnect vent elbow fitting from bottom, right front of tank.
4. See Figure 1. Remove front plastic tubing with elbow (12) and vent hose (13) from rear plastic tubing (14). Front plastic tubing (12) with attached 90° elbow and vent hose (13) may be discarded.

#### **NOTE**

The fuel tank being installed has the fuel valve fitting on the left side of the tank. To allow mounting the fuel valve on the left side of the tank, the ignition switch must be relocated to the right side of the coil bracket contained in this kit. Separate procedures for relocating the ignition switch on 1992-1993, and 1994 models follow. Continue at the applicable procedure.

### Moving Ignition Switch - 92 & 93 Models

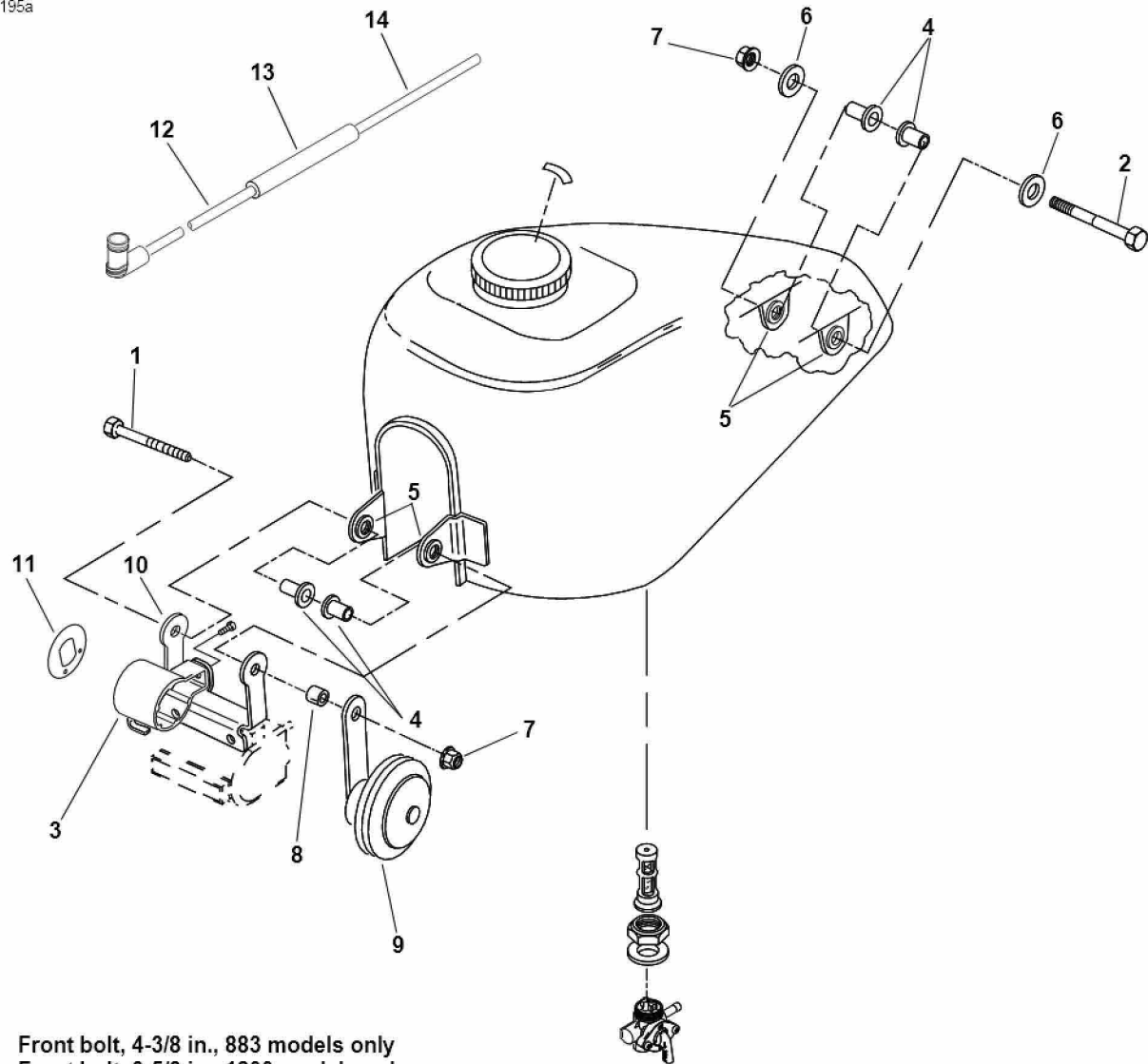
1. Cut cable strap securing ignition switch harness to main harness at ignition switch.
2. If motorcycle being serviced is a 1200 cc model perform step 3. If an 883 cc model is being serviced go to step 4.
3. Remove screw that attaches horn bracket to upper engine mount. Allow horn and choke control to hang unsupported.

4. See Figure 2. Remove nut (1) securing switch cover (2) to upper engine mount.
5. On 1200 cc models, reinstall horn bracket to upper engine bracket.
6. See Figure 2. Remove face nut (3) from ignition switch. Some models may have a washer between switch cover and face nut. Retain this washer and reinstall when mounting switch in new switch housing.
7. See Figure 1. The new plastic switch housing (3) has two alignment "flats" in the mounting hole. The 1992 and 1993 switches have only one flat on the threaded mounting surface. Modify the switch housing as instructed in the next two steps.
8. Position the 1992 and 1993 switch position label with the circular center hole on the new plastic switch housing hole. Use the label as a template and mark the material that must be removed so the single flat switch may be installed.
9. With half-round or rat tail file remove material so switch may be inserted in switch housing.
10. Insert switch in housing, and insert and turn key fully counter-clockwise to OFF. Remove backing from switch label and install label with OFF position on label aligned with key.
11. See Figure 3. Install plastic washer (if present) and face nut (4) and tighten securely.
12. Remove stock coil bracket. Save coil mounting plate and screws.
13. See Figure 3. Install coil on new coil bracket from kit with tab for mounting ignition switch housing on right side.

#### **NOTE**

If ignition switch wires are too short to allow placing the switch at the right front of the fuel tank do the following: Cut cable straps on main wiring harness and gently pull the ignition switch wires forward through conduit so wires are not tightly stretched.

14. Loosen terminal screws on ignition switch and place ignition switch housing on coil bracket. See Figure 3. Install screw (1) to secure housing (2) to coil bracket.
15. Check that switch wires are correct length, by installing front fuel tank mounting bolt through coil bracket and frame.
16. If switch wires have some slack, install new cable straps from kit to replace any that have been removed.
17. Check terminals on ignition switch to ensure they are not touching each other and that they are positioned to avoid short bends in the leads.
18. Re-position terminals if needed, and tighten terminal screws.



1. Front bolt, 4-3/8 in., 883 models only  
Front bolt, 3-5/8 in., 1200 models only
2. Rear bolt, 2-1/8 in., all models
3. Switch housing
4. T-spacers (4)
5. Grommets (4)

6. Washer (2)
7. Nuts (2)
8. Horn spacer – XLH 883 only
9. Horn– XLH 883 only

10. Coil bracket
11. Label, switch
12. Plastic tubing (FRONT)
13. Vent hose
14. Plastic tubing (REAR)

Figure 1. Fuel Tank Mounting Hardware

### Moving Ignition Switch - 1994 Models

Relocate the ignition switch on 1994 models following the instructions given in "Moving Ignition Switch - 92 & 93 Models", except do not perform steps 7 through 9. Also the 1994 switch label has two aligning flats so the label will be properly located when installed on the switch housing.

### Installing Parts On New Fuel Tank

1. Install grommets in mounting holes of new tank following instructions given in Instruction Sheet for 61618-96C.
2. See Figure 1. Install T-spacer (4) in grommets with flanges inboard in mounting tabs.
3. Install fuel shutoff valve supplied in kit using old mounting nut. The hose fitting should face the rear and be parallel with tunnel in tank. See Instruction Sheet for 61618-96C for installation instructions. Do not tighten nut fully. Final positioning and tightening will be done with tank mounted.

### Installing New Fuel Tank

1. See Figure 1. Install tank, making certain coil bracket is positioned outboard of grommets.
2. Place a 5/16 inner diameter washer (6) on the 5/16-18 x 2-1/8 bolt (2) and slide bolt through rear tank mount and frame.
3. Install another 5/16 inner diameter washer (6) on bolt (2) and a 5/16-18 nut (7).
4. Select the correct length front bolt (1). For 883 cc models use the 5/16-18 x 4-3/8 in. bolt. For 1200 cc models use the 5/16-18 x 3-5/8 in. bolt.
5. Install the front bolt. Make certain that horn spacer (8) and horn (9) are properly positioned on front mount bolt.
6. Check that no wires or hoses are being pinched by fuel tank. Move wire and/or hoses as needed and tighten front and rear bolt to 8-16 ft-lbs.

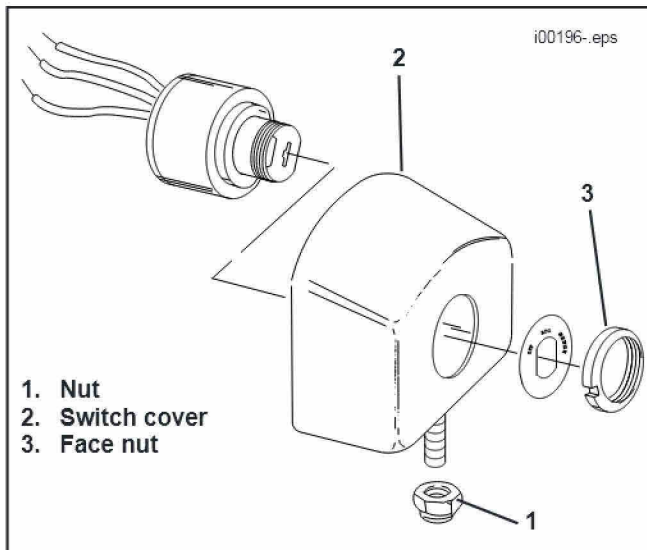


Figure 2 Ignition Switch

7. Place hose clamp on end of hose with 90° bend. Route hose in front of rear cylinder head to carburetor.
8. Install hose on fuel valve and position valve so hose and hose clamp are not touching top engine bracket. Tighten hose clamp.
9. Tighten valve nut to 8-16 ft-lbs..
10. See Figure 4. Slip fuel line shield and hose clamp on fuel line.

**NOTE**

*Fuel line shield must cover entire length of fuel line to prevent fuel line contact with upper engine mount.*

Cut hose and shield to proper lengths. If the fuel line is too long it could twist and kink.

11. Position hose clamp as shown to avoid interference with air cleaner backplate. Tighten hose clamp.
12. Reconnect vent line using the following components from Gas Tank Kit, Part No. 61618-96C:
  - 90° elbow (27250-96A)
  - Straight hose fitting (27249-96)
  - Vent hose, 7.5 in. long (not sold separately)

Connect small end of 90° elbow to tank vent fitting on bottom, right middle of tank. Install straight hose fitting into 90° elbow. Connect new vent hose to straight fitting and plastic rear tubing.

13. See Figure 3. Place throttle cables in throttle cable clip (3).
14. Fill tank with gasoline and install cap from previously removed stock tank. Check fuel valve and fuel line for leaks.

**⚠WARNING**

**Always connect the positive battery cable first. If the positive cable should contact ground with the negative cable installed, the resulting sparks may cause a battery explosion resulting in personal injury.**

15. Reconnect battery cables, positive cable first.

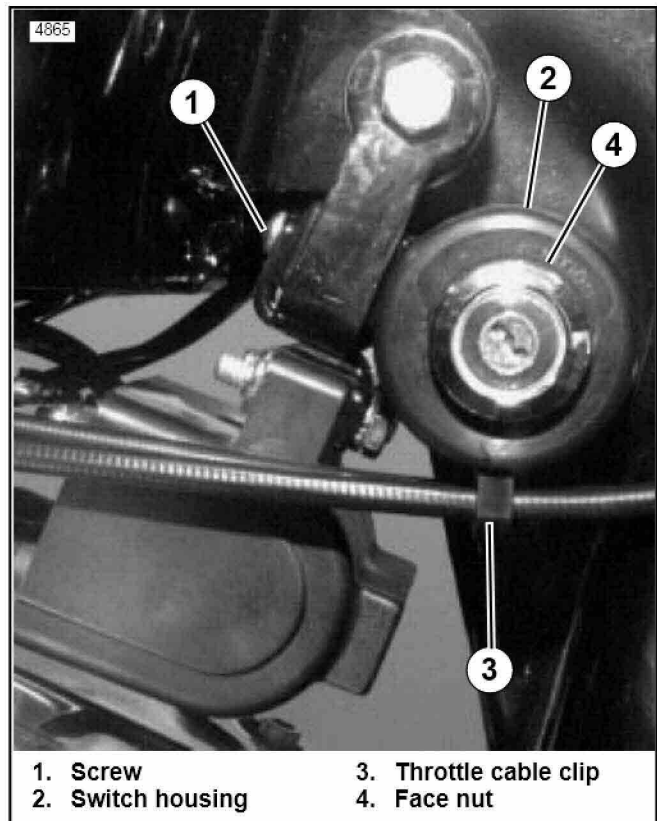


Figure 3. Ignition Switch Relocated

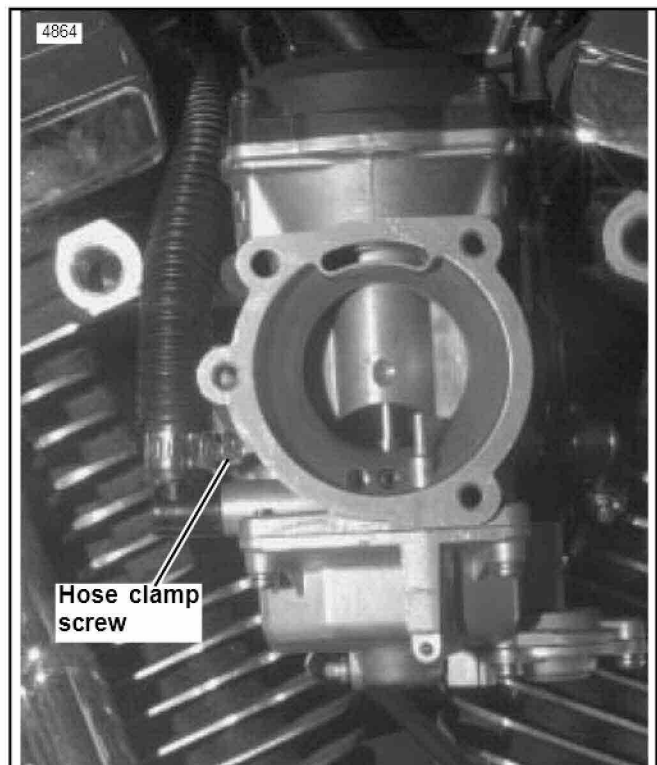


Figure 4. Fuel Line Routing

16. Check that horn operates. If horn does not sound on 883 cc models, install external toothed washer between coil bracket and horn spacer. The toothed washer should provide a more positive electrical ground.
17. Install seat and air cleaner.



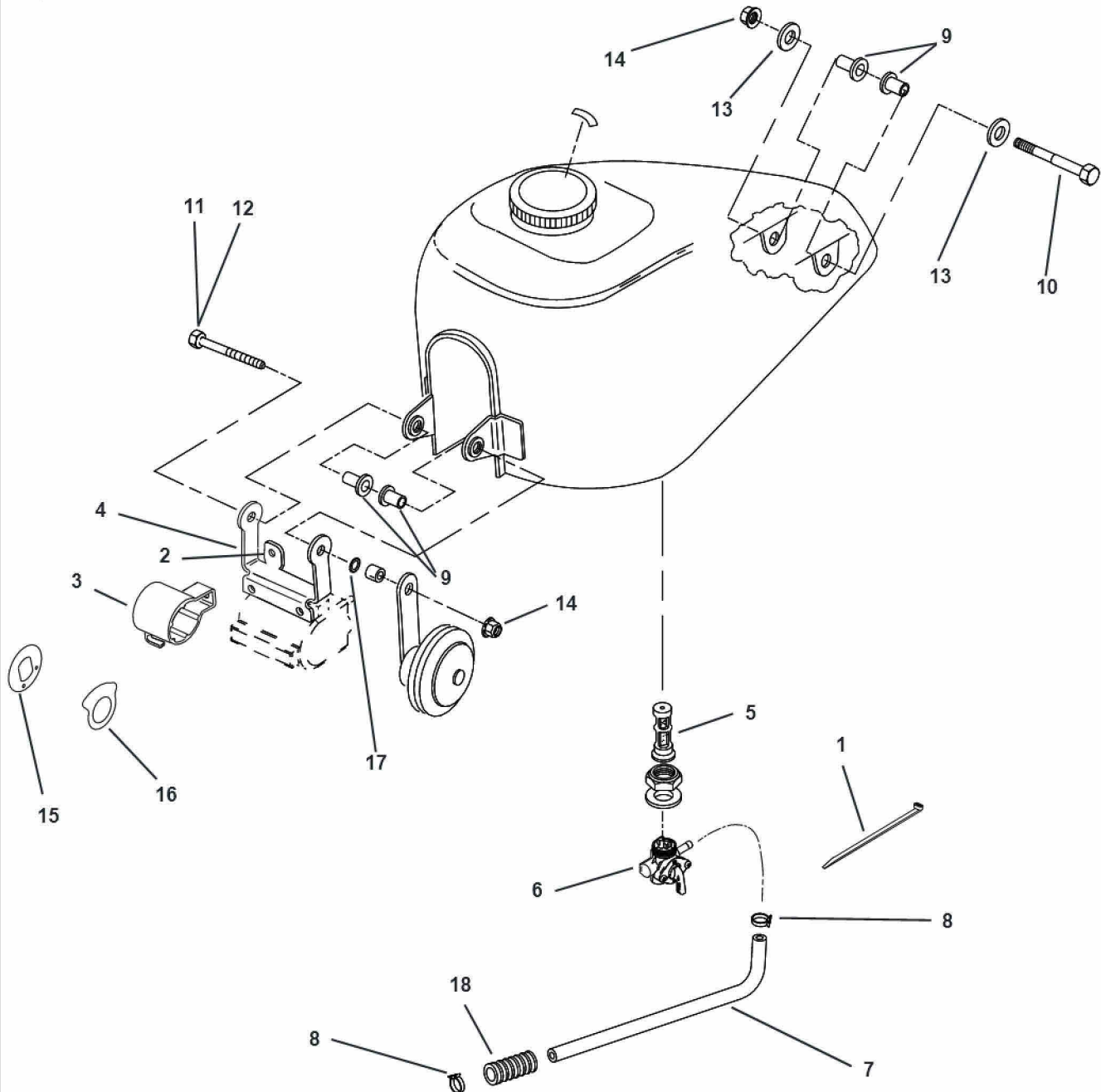
# Service Parts

Part No. 61958-94A

Date 6/97

1992-1994 XLH Fuel Tank Hardware Kit

sp61958



Item	Description	Part No.	Item	Description	Part No.
1	Cable strap	10006	11	Bolt, 5/16-18 x 4-1/2 in. (XLH 883 only)	4067
2	Screw, hex socket 10-24 x 1/2 in. (not shown)		12	Bolt, 5/16-18 x 3-5/8 in. (XLH 1200 only)	4116
3	Ignition switch cover	71510-95	13	Washers, 21/6 X 1/2 X 1/16	6788
4	Coil bracket	31723-95	14	Locknuts, 5/16-18 X 9/32 X 1/2 hex.	7531
5	Fuel valve filter	62166-81A	15	Label, ignition switch positions (1994 models)	71550-94
6	Fuel valve body	62167-81	16	Label, ignition switch positions (1992 - 93 models)	71550-75
7	Fuel hose	62348-95	17	Lockwasher, 5/16 external tooth	7232
8	Hose clamp	9946	18	Shield, fuel hose	63181-95
9	T-spacer	5787			
10	Bolt, 5/16-18 x 3-1/8 in.	4117			