



INSTRUCTIONS

-J00309

REV. 5-25-01

Kit Numbers 57960-97, 58034-96, 58112-96, 58357-96, 58367-96, 58441-96, 58570-96, 58626-99, 57715-01, 57716-01, and 58164-96A,

DETACHABLE WINDSHIELD AND DOCKING HARDWARE KIT

General

These kits install on the following models equipped with 39 mm front forks:

Kit Number 57960-97 is a Super Sport smoked-windshield assembly for 1988 and later XL, FXR, and FXD models.

Kit Number 58034-96 is a standard-height clear-windshield assembly for 1988 and later XL, FXR, and FXD models, except XL Custom and FXLR models.

Kit Number 58112-96 is a low-profile smoked-windshield assembly for 1988 and later XL, FXR, and FXD models, except XL Custom and FXLR models.

Kit Number 58357-96 is a standard height clear-windshield assembly for 1996 and later XL Custom and 1987-1994 FXLR models.

Kit Number 58367-96 is a low-profile smoked-windshield assembly for 1996 and later XL Custom and 1987-1994 FXLR models.

Kit Number 58441-96 is a standard-height smoked-windshield assembly for 1988 and later XL, FXR, and FXD models.

Kit Number 58570-96 is a standard-height clear-windshield assembly for 1988 and later XL, FXR, and FXD models.

Kit Number 58626-99 is a standard-height smoked-windshield assembly for 1988 and later XL, FXR and FXD models, except XL Custom and FXLR models.

Kit Number 57715-01 is a standard-height smoked-windshield assembly for 1988 and later XL, FXR and FXD models equipped with accessory passing lamps.

Kit Number 57716-01 is a standard-height clear-windshield assembly for 1988 and later XL, FXR and FXD models equipped with accessory passing lamps.

Kit Number 58164-96A is the docking hardware required to mount any of the above windshields.

See the Service Parts illustrations for kit contents.

NOTE

A Service Manual for your vehicle is available from your Harley-Davidson Dealer.

Installation

MODELS EQUIPPED WITH FORK-MOUNTED TURN SIGNALS

If turn signals are not mounted on the upper fork bracket, go to INSTALLING THE WINDSHIELD. Otherwise, read this paragraph. On models with turn signals mounted on the upper fork bracket, the turn signals must be relocated to the lower fork bracket. To relocate the turn signals, use Directional Relocation Kit 72389-96. Refer to the instruction sheet provided

with the kit for proper wiring procedure, then go to the windshield installation described in this instruction sheet.

MODELS EQUIPPED WITH PASSING LAMPS

On models equipped with passing lamps, the turn signal must be relocated under the lamps using Turn Signal Relocation Kit 68603-01. Refer to the Instruction Sheet provided with the kit for relocation procedures, then go to the windshield installation described in this instruction sheet.

INSTALLING THE WINDSHIELD

NOTE

Cover gas tank and front fender before beginning installation.

1. See Figure 1. Relocate clutch cable to the inside of the handlebars as shown in illustration as follows:
 - a. Slide rubber boot off cable adjuster. Adjuster is located approximately halfway along clutch cable by the front frame downtube.
 - b. Holding cable adjuster with 1/2 inch wrench, loosen jam nut using a 9/16 inch wrench. Back jam nut away from cable adjuster. Move adjuster toward jam nut to introduce a large amount of freeplay at the hand lever.
 - c. Remove small snap ring from pivot-pin groove at bottom of clutch lever bracket. Remove pivot pin and clutch hand lever from bracket.
 - d. Reroute clutch cable to the inside of the handlebars as shown in Figure 1 and reconnect clutch cable to clutch lever by reversing Step c.
 - e. Turn cable adjuster away from jam nut until slack is eliminated at hand lever. Pull clutch cable ferrule away from clutch lever bracket to check free play. Turn cable adjuster as necessary to obtain 1/16 to 1/8 inch (1.6-3.2 mm) free play between end of cable ferrule and clutch lever bracket as shown in Figure 2.
 - f. Hold adjuster with 1/2 inch wrench. Using 9/16 inch wrench, tighten jam nut against cable adjuster. Cover cable adjuster mechanism with rubber boot.
- 2a. See Figure 3. **For handlebar styles other than buckhorn pullbacks**, use wireform (1) included in kit to secure throttle cables to upper mounting clamp as shown in illustration (bottom view). Place chrome washer from kit (Item 6 on Service Parts Page 8) between wireform and mounting clamp nut.
- 2b. See Figure 4. **For buckhorn-style pullback handlebars**, use wireform (1) included in kit to secure throttle cables to upper fork triple clamp as shown in illustration (top view). For all other models, use sockethead screw (8) and washer (6) contained in kit, and place washer under wireform.
- 2c. For vehicles equipped with passing lamps, install passing

lamp kit following instructions provided in kit prior to performing the following steps.

WARNING

After securing throttle cable with wireform, check that throttle control opens and closes smoothly when handlebars are turned fully to left and right fork stops. Sticking throttle response could result in loss of control of vehicle and death or serious injury.

3. See Service Parts Illustration. Assemble mounting hardware for lower windshield mounting as shown. For models equipped with passing lamps, install the lower mounting clamp approximately 1-3/4 inch above the lower fork triple clamp with the clamp nuts facing toward the rear of the motorcycle. For models not equipped with passing lamps, install the lower mounting clamp approximately 1/2 inch above the lower fork triple clamp with clamp nuts facing toward the rear of the motorcycle. Tighten clamp nuts to 10 ft-lbs (14 Nm). Be sure the clamp does not rotate during tightening (the mounting bushing must be parallel to the windshield brackets). Tighten buttonhead screws (4) to 15 ft-lbs (20 Nm).
4. See Service Parts illustration. Assemble hardware for upper windshield mounting as shown in illustration. Leave clamp nuts loose so clamps can be slid up and down fork tubes to allow for proper adjustment.
5. Hook the two lower windshield assembly jaws into the grooves of the lower bushings then slide the upper clamp assemblies into place until the upper bushings firmly fit into the upper windshield jaws.
6. With windshield in place, tighten upper clamp nuts to 10 ft-lbs (14 Nm). Be sure the clamp does not rotate during tightening (the mounting bushing must be parallel to the windshield brackets).

NOTE

Inspect windshield for proper adjustment in relation to the headlamp opening. If necessary, adjust the mounting clamps up or down for proper headlamp to windshield relationship.

WARNING

Inspect windshield upon completion of installation. Be sure windshield mounting does not restrict full left or full right movement of front fork assembly. Restricted movement could affect handling, resulting in death or serious injury. If restriction does occur, adjust windshield as needed until proper clearance is obtained.

WARNING

Check mounting hardware periodically. Never ride with loose mounts. A loose mounting causes extra stress on all other mounts, as well as the windshield itself, and could result in premature failure of components allowing the windshield to detach and startle the rider. This could cause loss of control and death or serious injury.

CAUTION

Do not clean Lexan® polycarbonate in hot sun or high temperature. Powdered, abrasive or alkaline cleanser will damage the windshield. Never scrape the windshield with a razor blade or other sharp instruments because permanent damage will result. Sunlight reflections off of the inside curvature of a windshield can, at certain times of the day, cause extreme heat build-up on motorcycle instruments. Exercise care in parking. Park facing the sun, place an opaque object over the instruments, or adjust the windshield to avoid reflections. Harley-Davidson windshields are made of Lexan®. Lexan® is a more durable and distortion-resistant material than other types of motorcycle windshield material, but still requires attention and care to maintain.

- **Do not use liquid windshield “protectors” on your windshield. Although they may work well on automobile safety glass, Harley-Davidson cannot ensure the results when used on Lexan® Harley-Davidson windshields. If you want to use a windshield protectant on your windshield, try Harley Glaze Polish and Sealant®.**
- **Do not use benzine, paint thinner, gasoline, or other types of harsh cleaning agents on windshield. They will damage the windshield surface.**
- **Do not use benzine, paint thinner, gasoline, lubricants (including Armorall), or other cleaning agents on the rubber bushings. They will damage the bushing surfaces.**

NOTE

Covering the windshield with a clean, wet cloth for approximately 15 minutes before washing will make dried bug removal easier.

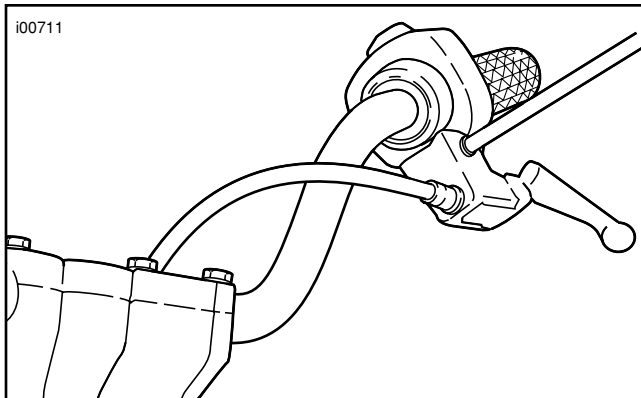
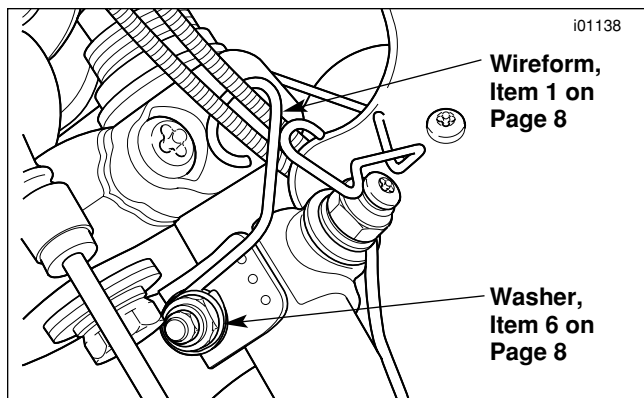


Figure 1. New Clutch Cable Routing



**Figure 3. Throttle Cable Attachment
All handlebars except buckhorn-style**

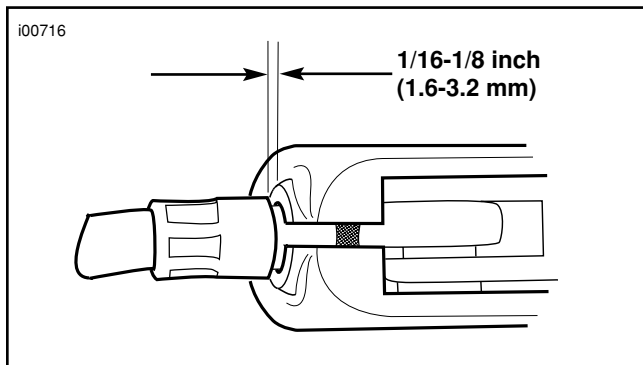
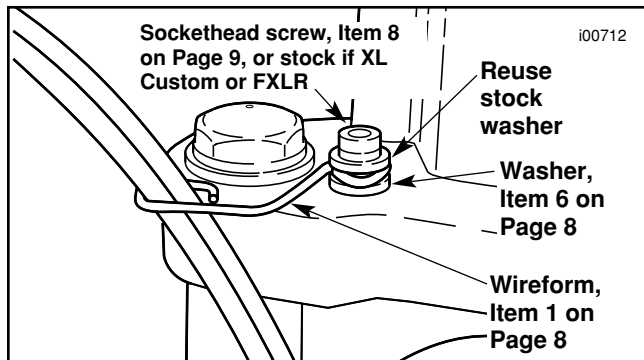


Figure 2. Clutch Cable Adjustment



**Figure 4. Throttle Cable Attachment
Buckhorn-style pullback handlebars**



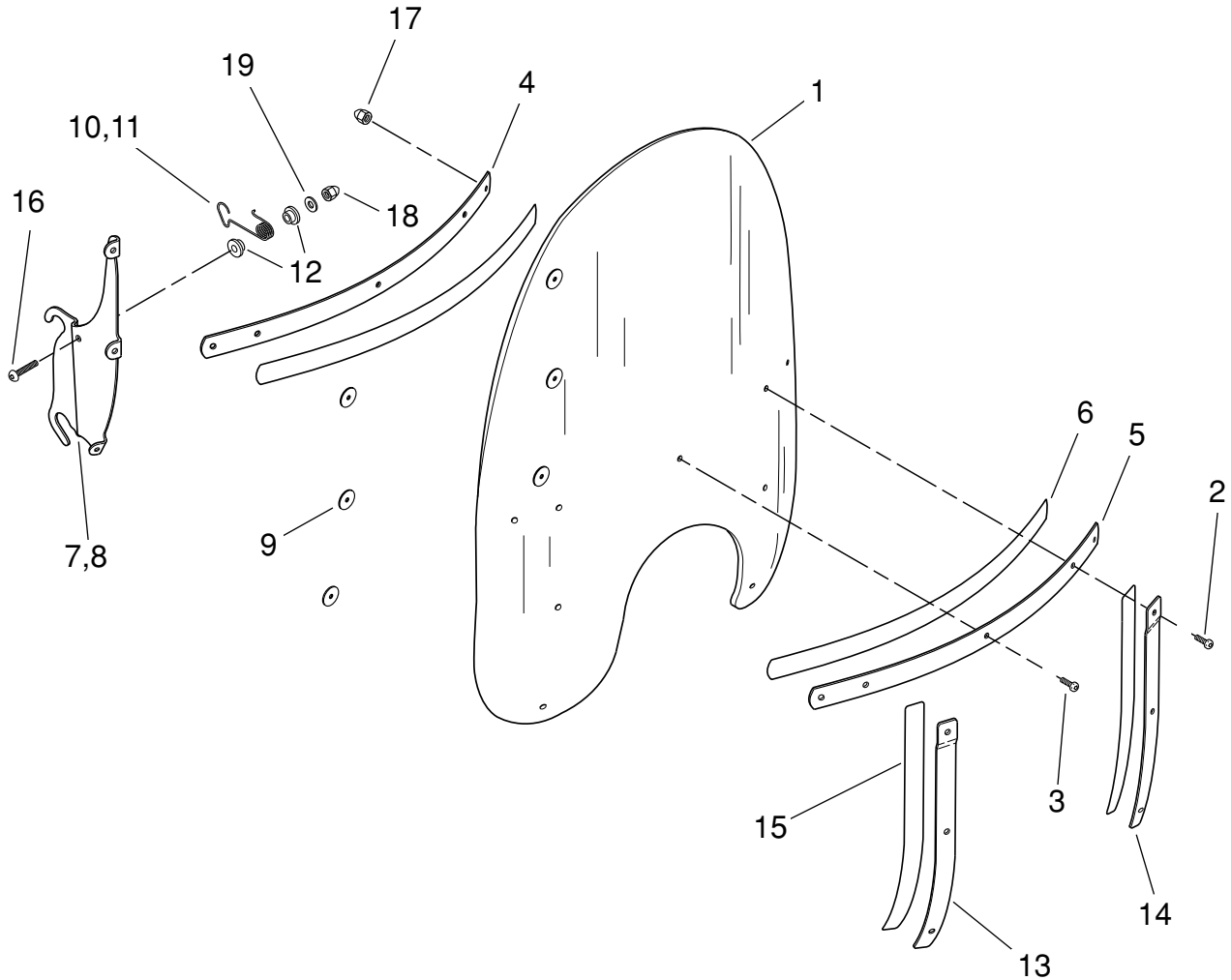
Service Parts

Part No. 58034-96 & others

Date 2/01

Windshield Kits

sp58034-1



Windshield Kits (58034-96, 58112-96, 58357-96, and 58367-96, 58626-99):

NOTE

Appearance of windshield in illustration may vary from actual windshield depending on kit number.

Item	Description	Part No.
1	Windshields (for 58034-96, standard height clear) (for 58112-96, low profile smoked) (for 58357-96, standard height clear) (for 58367-96, low profile smoked) (for 58626-99, standard height, smoked)	58061-96 58103-96 58358-96 58368-96 58625-99
2	Panhead screws, Torx (2)	2452
3	Panhead screws, Torx (7)	2921
4	Inner windshield brace	58050-78A
5	Outer windshield brace	58051-78A

Item	Description	Part No.
6	Windshield brace tape (2)	58052-78
7	Windshield bracket, left	58116-96
8	Windshield bracket, right	58122-96
9	Washers (6)	58152-96
10	Windshield retainer, left	58259-95
11	Windshield retainer, right	58266-95
12	Nylon bushings (4)	58272-95
13	Brace, right	58406-75A
14	Brace, left	58408-75A
15	Windshield brace tape (2)	58417-77
16	Buttonhead screws (2)	94426-95
17	Acorn nuts (9)	7651
18	Acorn nuts, 1/4-20 (2)	94004-90T
19	Flatwashers, 1/4 (2)	6703



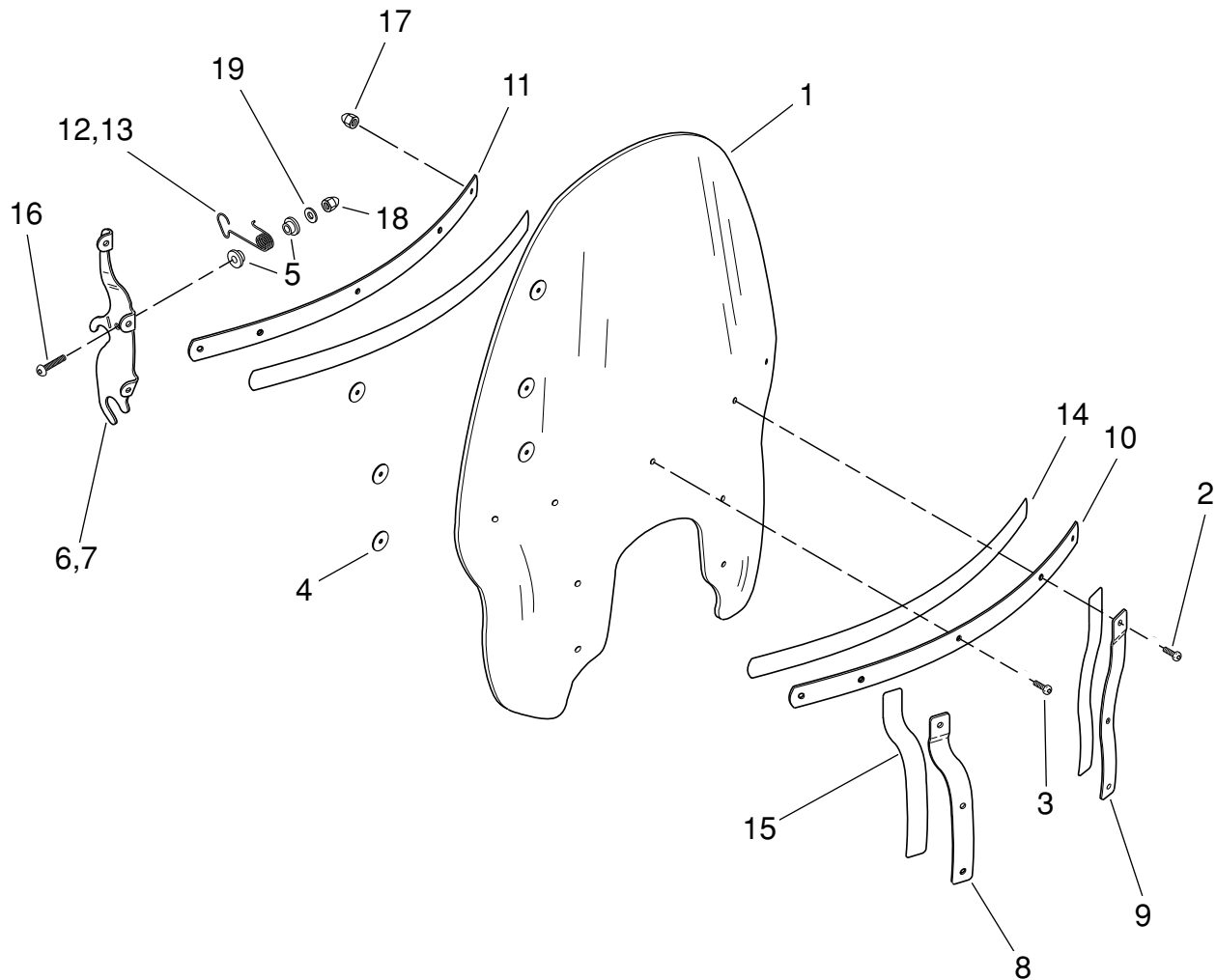
Service Parts

Part No. 58570-96, 58441-

Date 2/01

Windshield Kits

sp58034-2



Windshield Kits (58570-96 and 58441-96):

NOTE

Appearance of windshield in illustration may vary from actual windshield depending on kit number.

Item	Description	Part No.
1	Windshields (for 58570-96, clear) (for 58441-96, smoked)	58572-96 58443-96
2	Panhead screws, Torx (2)	2452
3	Panhead screws, Torx (7)	2921
4	Washers (6)	58152-96
5	Nylon bushings (4)	58272-95
6	Bracket, right	58573-96
7	Bracket, left	58574-96

Item	Description	Part No.
8	Outer trim strip, right	58575-96
9	Outer trim strip, left	58576-96
10	Horizontal outer trim strip	58577-96
11	Horizontal inner trim strip	58578-96
12	Wireform, left	58579-96
13	Wireform, right	58580-96
14	Horizontal tape	58582-96
15	Vertical tape	58583-96
16	Buttonhead screws (2)	94426-95
17	Acorn nuts (9)	7651
18	Acorn nuts, 1/4-20 (2)	94004-90T
19	Flatwashers (2)	6703



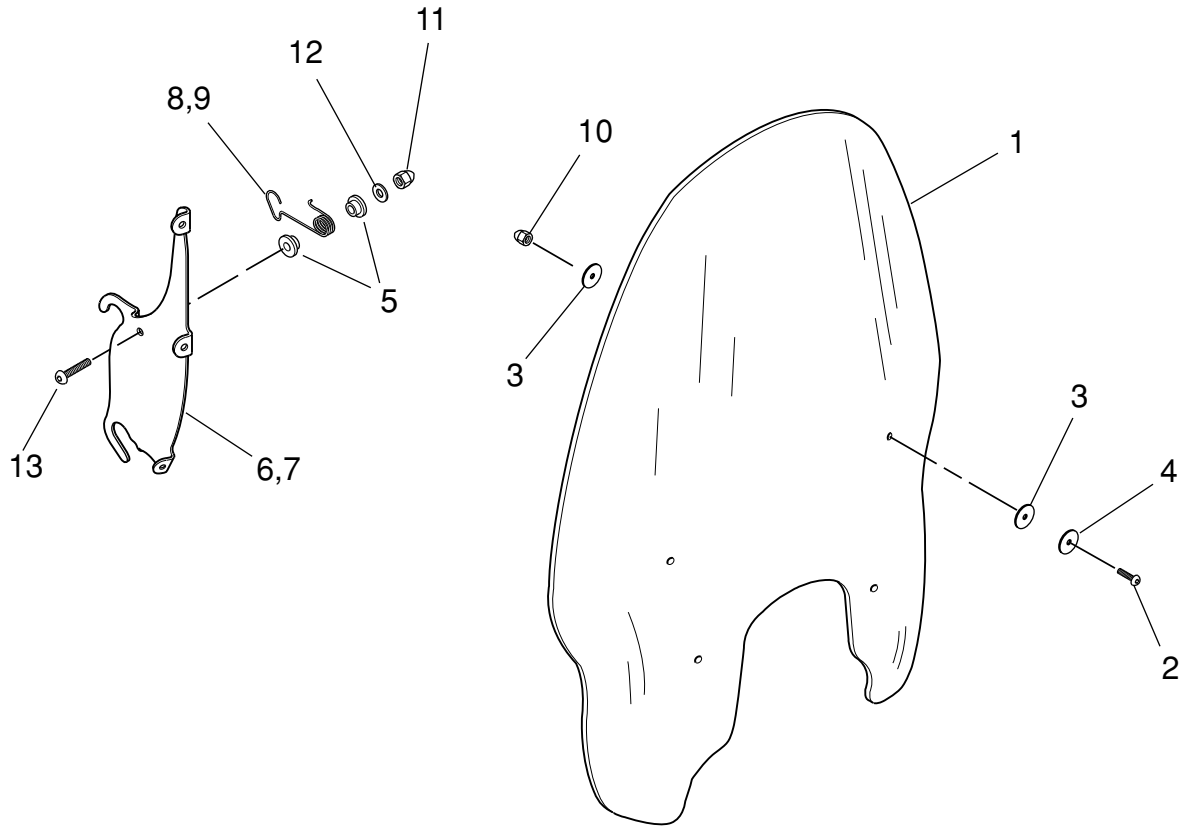
Service Parts

Part No. 57960-97

Date 2/01

Windshield Kits

sp57960



Service Parts for Kit 57960-97

Item	Description	Part No.	Item	Description	Part No.
1	Windshield	57730-98	8	Wireform, left	58579-96
2	Buttonhead screws, chrn w/patch (4)	94639-99	9	Wireform, right	58580-96
3	Washers, rubber (8)	57964-97	10	Acorn nuts 5/16-24 (4)	94007-90T
4	Washers, chrome (4)	6352	11	Acorn nuts, 1/4-20 (2)	94004-90T
5	Nylon bushings (4)	58272-95	12	Flatwashers (2)	6703
6	Bracket, right	57963-97	13	Screws, buttonhead chrome (2)	94426-95
7	Bracket, left	57962-97	14	Screws, buttonhead chrome (4)	94446-95

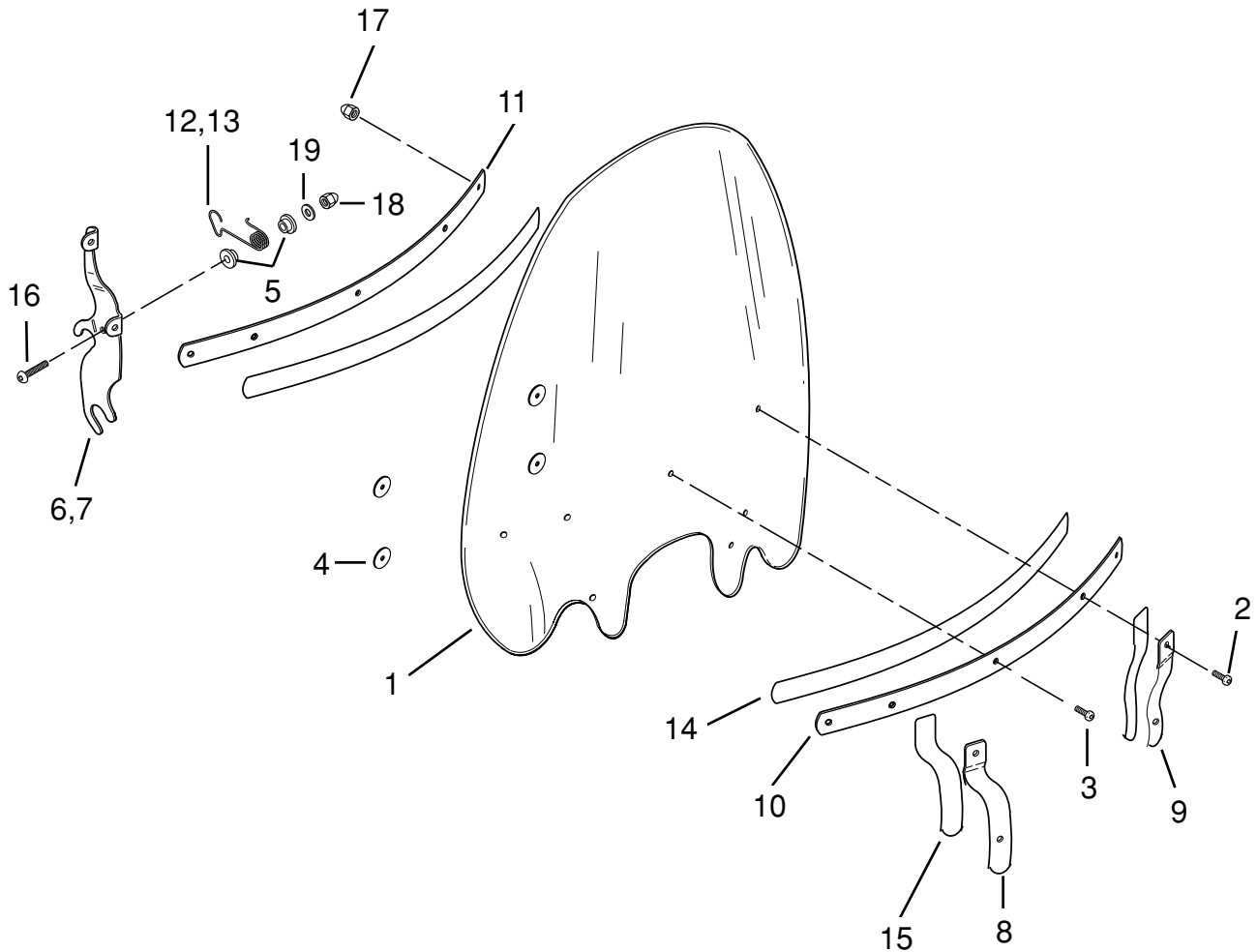


Service Parts

Part Nos. 57715-01, 57716-01 | Date 2/01

Windshield Kits

i03209.eps



Service Parts for Kits 57715-01 and 57716-01

Item	Description	Part No.	Item	Description	Part No.
1	Windshields (for Kit P/N 57716-01 Clear) (for Kit P/N 57715-01 Smoked)	57718-01 57717-01	10	Outer horizontal trim strip	58051-78A
2	Panhead screws, Torx (2)	2452	11	Inner horizontal trim strip	58050-78A
3	Panhead screws, Torx (5)	2921	12	Wireform, left	58579-96
4	Washers (4)	58152-96	13	Wireform, right	58580-96
5	Nylon bushings (4)	58272-95	14	Horizontal tape (2)	58052-78
6	Bracket, right	57710-01	15	Vertical tape (2)	57714-01
7	Bracket, left	57711-01	16	Buttonhead screws (2)	94426-95
8	Outer trim strip, right	57712-01	17	Acorn nuts (7)	7651
9	Outer trim strip, left	57713-01	18	Acorn nuts, 1/4-20 (2)	94004-90T
			19	Flatwashers (2)	6703



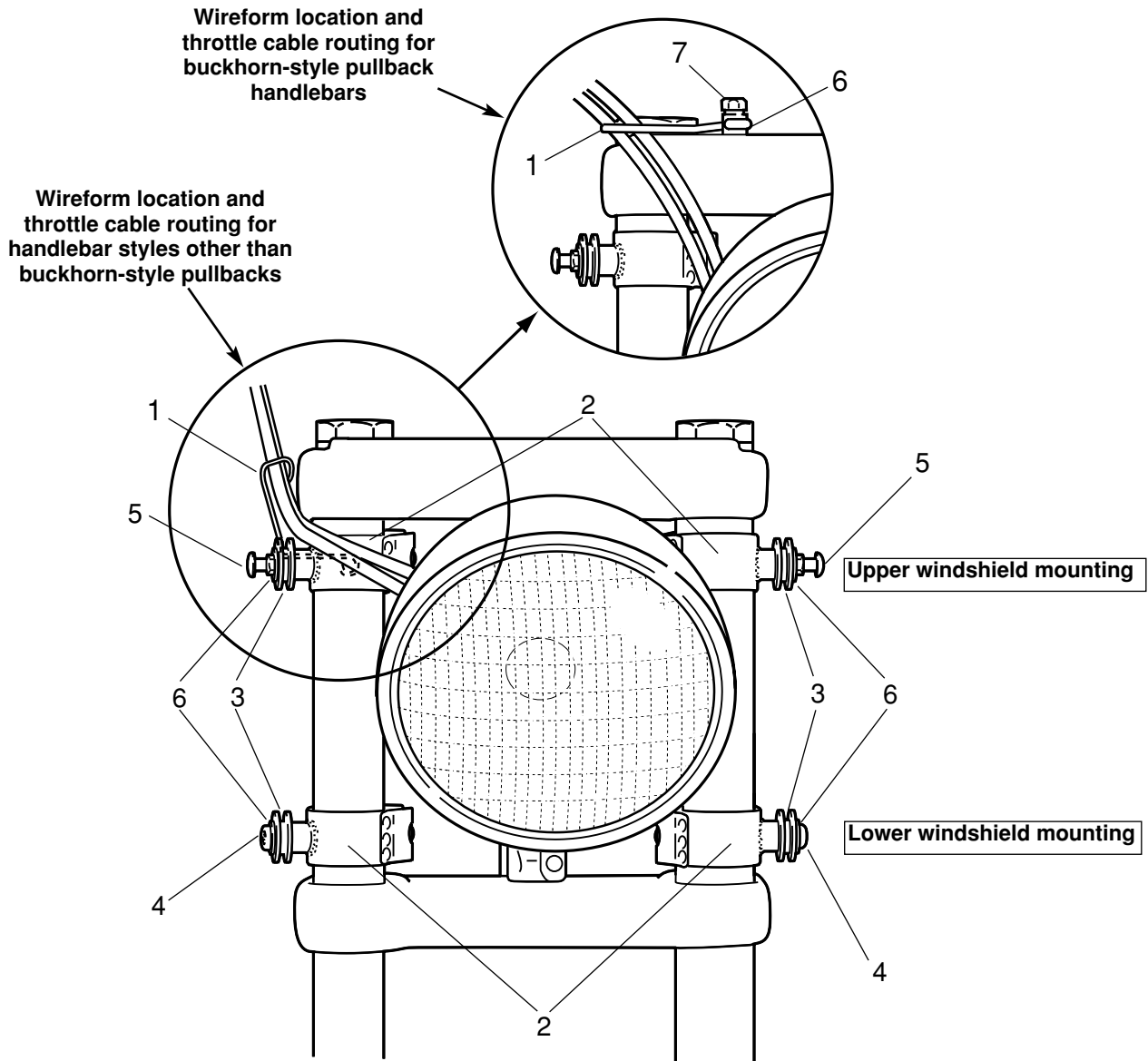
Service Parts

Part No. 58164-96A

Date 2/01

Windshield Docking Hardware Kit

sp58034-3a



Item Description

Hardware kit (58164-96):

Item	Description	Part No.
1	Wireform	58558-97
2	Mounting clamp (4)	58124-96
3	Bushings (4)	67621-94
4	Buttonhead screw (2), 5/16-24 x 5/8 long	94468-94T
5	Mushroom fastener (2)	58172-96

Item Description

Item	Description	Part No.
6	Flatwasher, chrome (5) (use with wireform, item 1)	94066-90T
7	Sockethead screw, 5/16-18 x 1.25 long	3210