



# INSTRUCTIONS

-J00138

REV. 8-1-95

Kit Number 45480-94

## XLH LOW-SUSPENSION FORK KIT

### General

This XLH Low-Suspension Fork Kit is designed for use on all 1989 and later XLH 883, XLH 883 Deluxe and XLH 1200 model vehicles. When installing this kit on all 1989-1993 XLH model vehicles, the two original front fork slider tubes must be replaced with new, longer slider tubes (purchased separately), HD Part Number 45395-92. The XLH Low-Suspension Fork Kit includes the following items:

Low-Suspension Fork Kit, HD Part No. 45480-94		
Description	Qty.	Part No.
Lower Stop Sleeve	2	45361-90
Spring	2	45372-92
Damper Tube	2	45938-92
Socket Bolt and Washer	2	45405-75A
Jiffy Leg Assembly	1	50072-92
Cotter Pin	1	554

### Fork Removal / Installation

#### ⚠ WARNING

Installation of any accessory suspension components may affect cornering clearance and jiffy stand operation. This could distract the rider, causing loss of control and personal injury.

#### ⚠ WARNING

The rider's safety depends on the correct installation of this kit. Follow the procedures listed in this Instruction Sheet and in the appropriate Service Manual. If the procedures are not within your capabilities, or if you do not have the proper tools, have your Harley-Davidson dealer perform the installation.

#### NOTE

A Service Manual for your vehicle is available from your Harley-Davidson dealer

1. Remove, disassemble and clean the front fork tube/slider assemblies. See the appropriate XLH Service Manual for detailed instructions.
2. If the vehicle is a 1989-1993 XLH model, obtain the new longer slider tubes identified by HD Part No. 45395-92.

#### NOTE

On all 1994 and later XLH models, the original equipment slider tubes may be reused, since they are the longer type referenced in step 2.

#### ⚠ CAUTION

When installing this Low-Suspension Fork Kit 45480-94 on all 1989-1993 XLH 883, XLH 883 Deluxe, and XLH 1200 models, you must replace the two original equipment front fork slider tubes with new longer slider tubes, part number 45395-92 (purchased separately). Failure to do so will result in excessive spring compression rate and inadequate rebound dampening characteristics, and may result in the top of the fork slider covers contacting the bottom of the lower fork bracket during extreme compression-loading of the vehicle's front end ("bottoming out"); vehicle ride quality will be adversely affected and vehicle damage could occur.

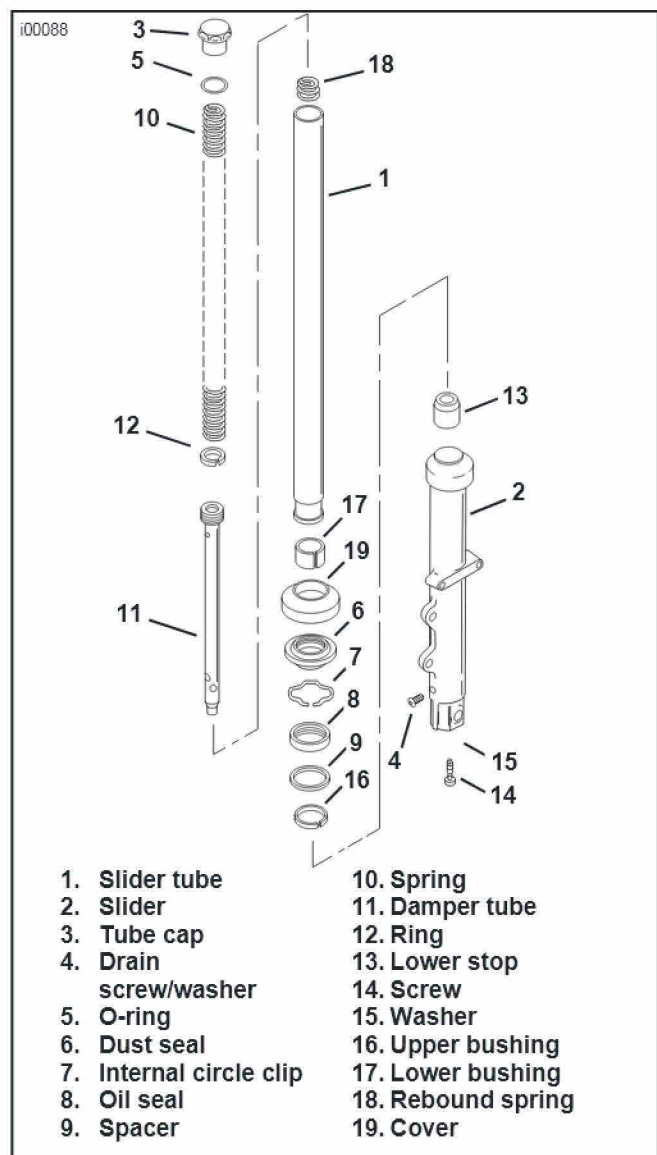


Figure 1. Front Fork Tube/Slider Tube Assembly

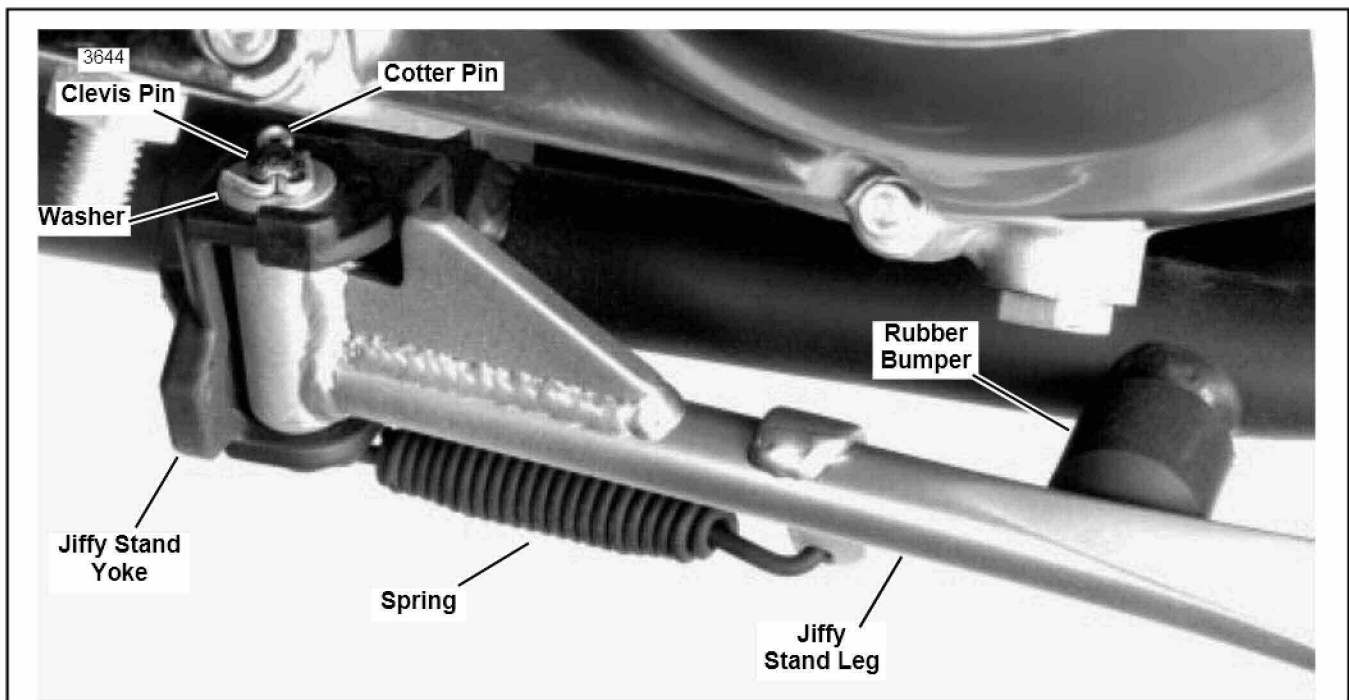


Figure 2. Jiffy Stand Assembly (Left Side View)

3. See Figure 1. Assemble the front fork tube/slider assemblies using the new springs (10), new damper tubes/rings (11 and 12), new lower stops (13), and new socket bolts and washers (14 and 15) provided in the kit, along with the longer 1994-style (and later) slider tubes (1) previously specified. Refer to the XLH Service Manual for detailed assembly instructions.
4. Fill each slider tube/slider assembly with the amount of TYPE "E" FORK OIL specified for XLH 883 HUGGER models (dry fork); that is, 12.1 fl oz. (358 ml). Verify that the slider tubes (1) are properly secured and positioned so that the top of each tube cap (3) extends 0.42-0.50 inches (10.7-12.7 mm) above the top surface of the front fork upper bracket.
5. See Figure 3. While firmly holding jiffy stand leg in fully retracted position, withdraw clevis pin until it disengages with the upper pivot hole of jiffy stand yoke.
6. Detach spring from anchor pin using pliers. Unhook other end of spring from jiffy stand leg.
7. Remove clevis pin from lower pivot hole of jiffy stand yoke. Remove jiffy stand leg.

## Jiffy Stand Removal

### ⚠WARNING

Wear gloves and protective eyeglasses (or face shield) when performing the following procedure. The jiffy stand spring tension could cause the spring, attached components and/or hand tools to fly outward at great speed.

1. Block motorcycle under frame so that motorcycle is securely upright and jiffy stand may be moved through its full range of travel.
2. See Figure 2. Remove rubber bumper from frame to permit further retraction of jiffy stand leg. Additional spring tension relief allows for easier spring removal.
3. Place jiffy stand leg in retracted position. Remove and discard cotter pin. Remove washer.

## Jiffy Stand Installation

### ⚠WARNING

Wear gloves and protective eyeglasses (or face shield) when performing the following procedure. The jiffy stand spring tension could cause the spring, attached components and/or hand tools to fly outward at great speed.

1. Apply a small amount of wheel bearing grease to pivot holes of jiffy stand leg and yoke, groove of anchor pin and O.D. of clevis pin.
2. See Figure 3. Hook either end of spring into spring mounting hole on jiffy stand leg. Install loose end of spring over anchor pin.
3. While holding end of spring in groove of anchor pin and holding jiffy stand leg in its retracted position, position pivot end of jiffy stand leg within yoke on motorcycle frame. Insert clevis pin through lower pivot hole of yoke and halfway into pivot hole of jiffy stand leg.

4. See Figure 2. Lift jiffy stand leg upward, aligning pivot hole of jiffy stand leg with slotted upper hole of yoke. Fully insert clevis pin through holes in jiffy stand leg and yoke.
5. Install washer over end of clevis pin and against upper surface of yoke. Insert new cotter pin through hole in end of clevis pin. Bend ends of cotter pin apart to secure.
6. Press rubber bumper onto mounting stud on motorcycle frame.
7. Extend and retract jiffy stand leg several times to check for proper operation. In retracted position (up), jiffy stand leg should be securely seated against frame-mounted rubber bumper.
8. Place jiffy stand in its full forward position (down). Carefully remove support blocking from beneath motorcycle frame. Rest motorcycle on jiffy stand.

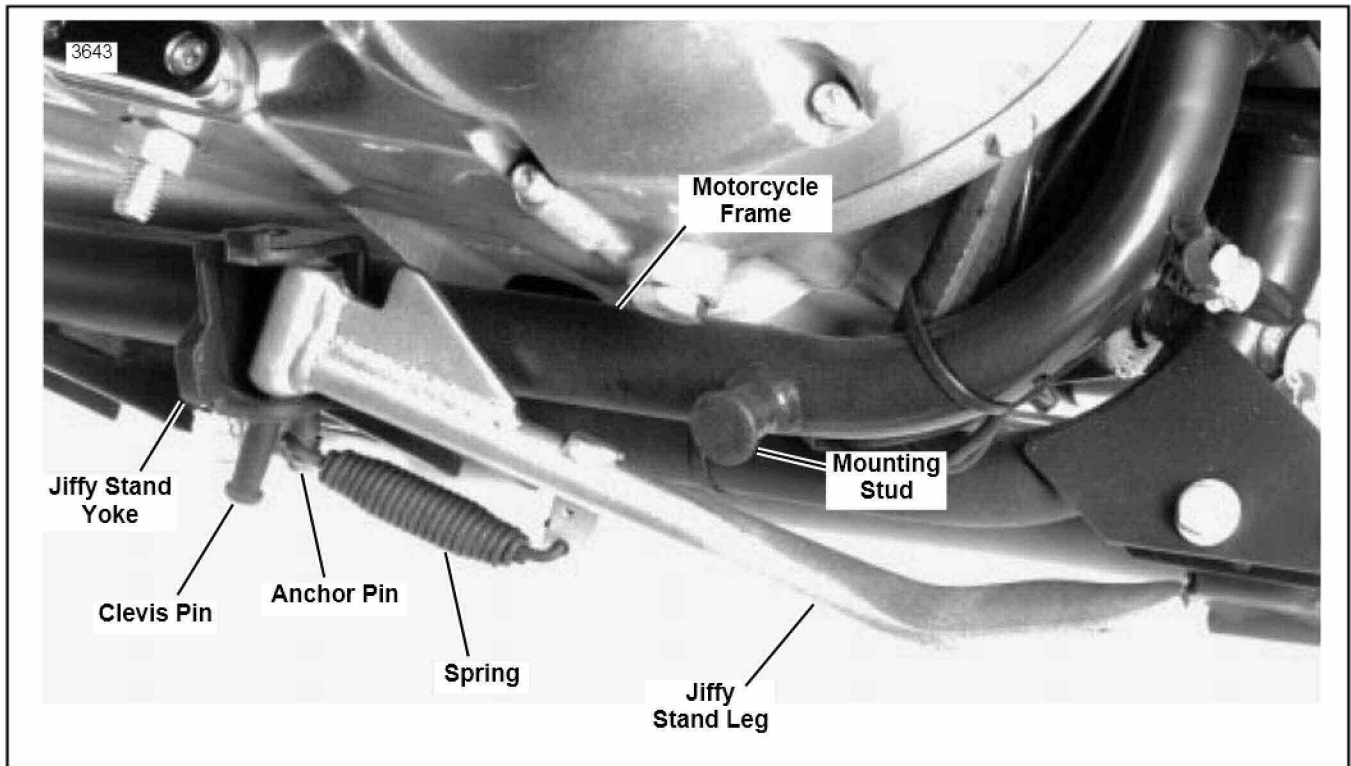


Figure 3. Jiffy Stand (Partially Installed)

