



INSTRUCTIONS

-J00127

2005-01-19

GUIDE PIN KIT

GENERAL

Kit Number

44212-82A

Models

This kit fits 1982 to Early 1987 XL and FXR, 1984 to Early 1987 FXST, 1986 to Early 1987 FLST, 1983 to 1985 FXE, and 1983 to Late 1984 FLHS model.

Kit Contents

NOTE

This kit is for rear brakes only.

Table 1. Kit Contents

Description	Quantity
Bolt, mounting	2
Pin boot	2

Table 1. Kit Contents

Description	Quantity
Guide pin, with sleeve	1
Guide pin, without sleeve	1

See Figure 2 and Table 2.

REMOVING CALIPER BODY

1. See Figure 1. Use an Allen wrench and remove and discard mounting bolts (6) from caliper body (5). Lift caliper body from carrier (1) and secure out of your way before proceeding.

NOTE

Do not allow caliper body to hang unsupported from its flexible hose, as damage could occur.

2. Wipe all dirt off both the carrier and caliper body.
3. Inspect brake pads and replace as a set, if necessary, following instructions and specifications in appropriate Service Manual.

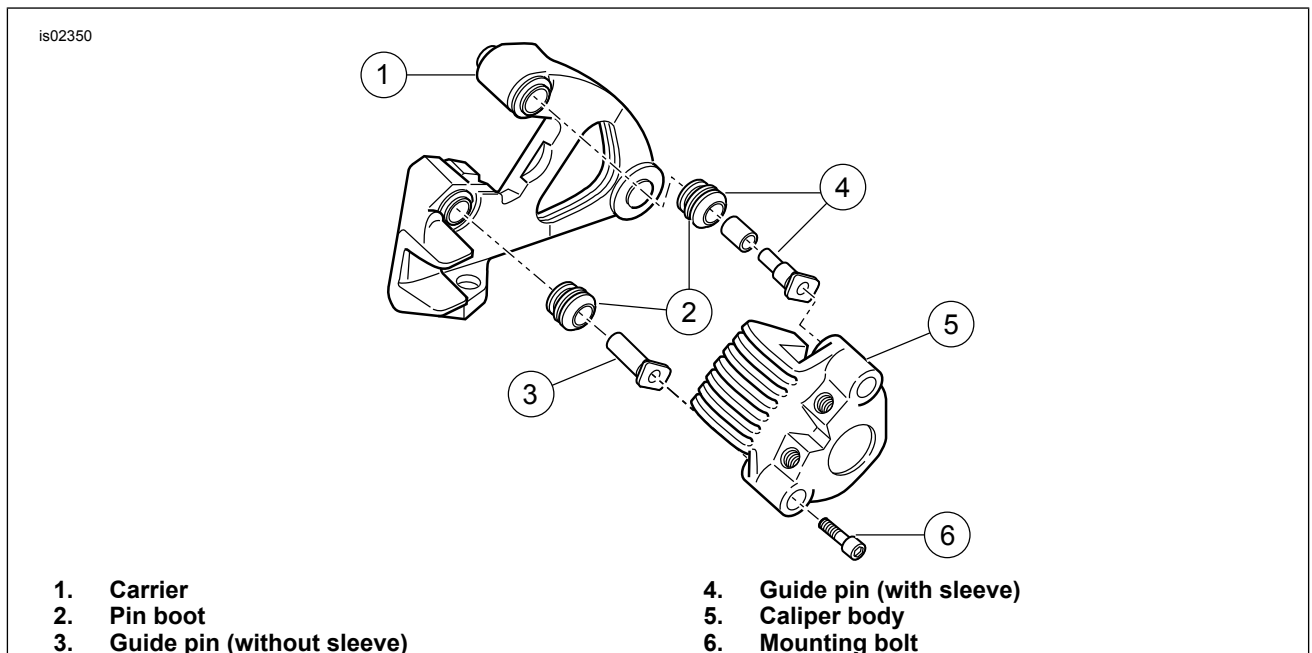


Figure 1. Guide Pin installation

INSPECTION AND PREPARATION

1. Inspect brake disc for wear and replace as necessary following instructions in appropriate Service Manual.
2. Clean and inspect surfaces of both pad abutment shims. If damaged or corroded, replace with new, following instructions in appropriate Service Manual.
3. Inspect pad tension spring. If damaged or heavily corroded, replace with new, following instructions in appropriate Service Manual.
4. Inspect piston dust cover for splits or deterioration. If damage is evident, remove retaining band, lift dust cover and inspect exposed area of piston for corrosion, scores, etc. Service component by replacement. Follow Service Manual instructions.

GUIDE PIN REPLACEMENT

1. See Figure 1. Remove the guide pins (3 and 4) from the carrier bores.
2. Clean old grease from carrier bores and lubricate with silicone grease (Harley-Davidson Part Number 94674-99), which is **not** supplied with guide pin kit.

⚠ WARNING

Be sure that brake fluid or other lubricants do not contact brake pads or discs. Such contact can adversely affect braking ability, which could cause loss of control, resulting in death or serious injury. (00290a)

3. Attach pin boot (2) to the guide pins and lubricate with silicone grease. Do not get lubricant on brake pads.
4. See Figure 1. Lubricate rubber sleeve included with kit with silicone grease and install on guide pin (4).
5. Refit guide pins (3 and 4) to carrier in accordance with Step 1 and the WARNING above.
6. Securely locate pin boots (2) in carrier (1) groove.
7. Fit brake pads to the carrier (1).
8. Locate caliper body (5) on carrier. Ensure flats on guide pin align with recess in body casting.
9. Secure caliper to carrier using new mounting bolts (6) from kit. Tighten to 15–20 N·m (132–180 **in-lbs**).

SERVICE PARTS

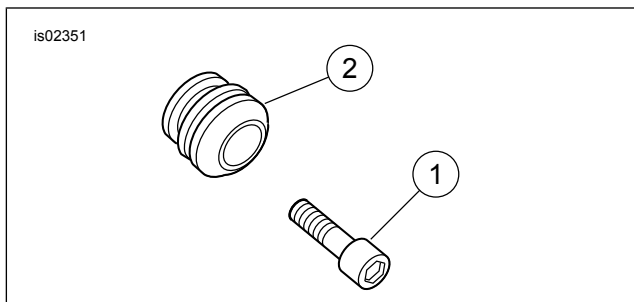


Figure 2. Service Parts: Guide Pin Kit

Table 2. Service Parts: Guide Pin Kit

Item	Description (Quantity)	Part Number
1	Bolt, mounting	44201-82
2	Pin boot	44200-82