



# INSTRUCTIONS

-J00078

REV. 5-1-96

Kit Number 34847-84

## TRANSMISSION COVER KIT

This kit is designed to replace transmission access covers on 1985 and earlier XL model motorcycles equipped with an alternator stator. This kit contains the following parts:

QTY.	DESCRIPTION
1	Retaining ring
4	Screw
1	Access cover

### **⚠ WARNING**

To avoid accidental start-up of vehicle and possible personal injury, disconnect the battery cables (negative cable first) before performing any of the following procedures.

### Installation

1. Unless transmission is damaged inside so it cannot be shifted from one gear to another, shift into high gear.
2. Place an oil drain pan under engine and remove chain case cover, clutch, front chain and sprocket as described in the clutch section of the appropriate XL Service Manual.
3. Remove and discard four screws securing alternator stator to transmission access cover.
4. See Figure 1. Remove and discard screws and stator mount from vehicles using the stator mount as a method of attaching the alternator stator to the transmission access cover.
5. See Figure 2. Remove four bolts securing access cover to the crankcase.
6. See Figure 3. Using an alignment tool, SNAP-ON 1650 or MAC LF-12, pry alternately at the removal slots to draw access cover form locating pins.

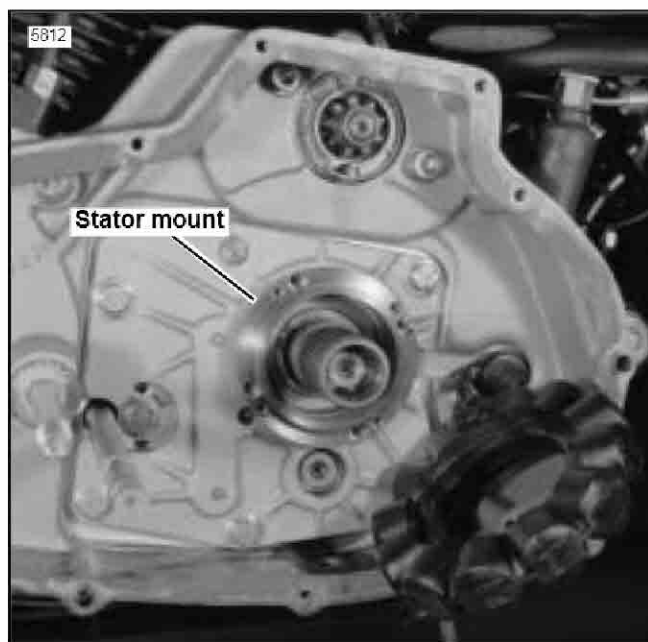


Figure 1. Stator Mount in Position

### NOTE

It may be necessary to heat cover around pins to ease cover removal.

7. Remove the access cover and transmission as an assembly.

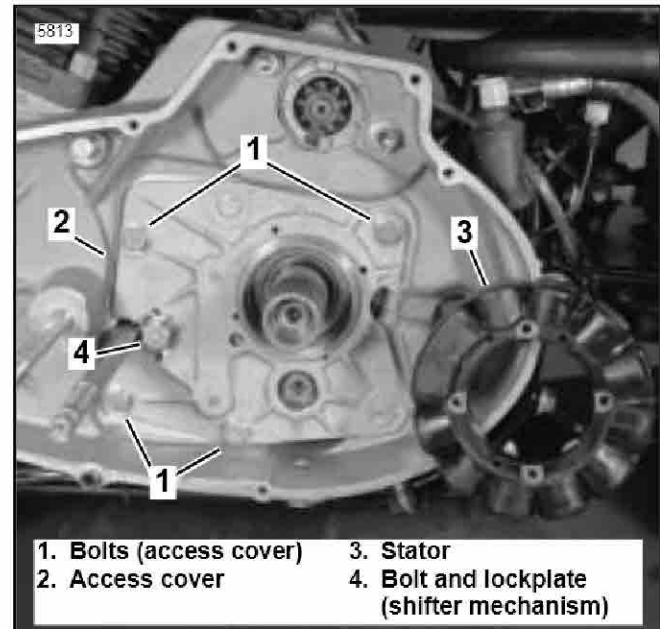


Figure 2. Transmission Access Cover Hardware

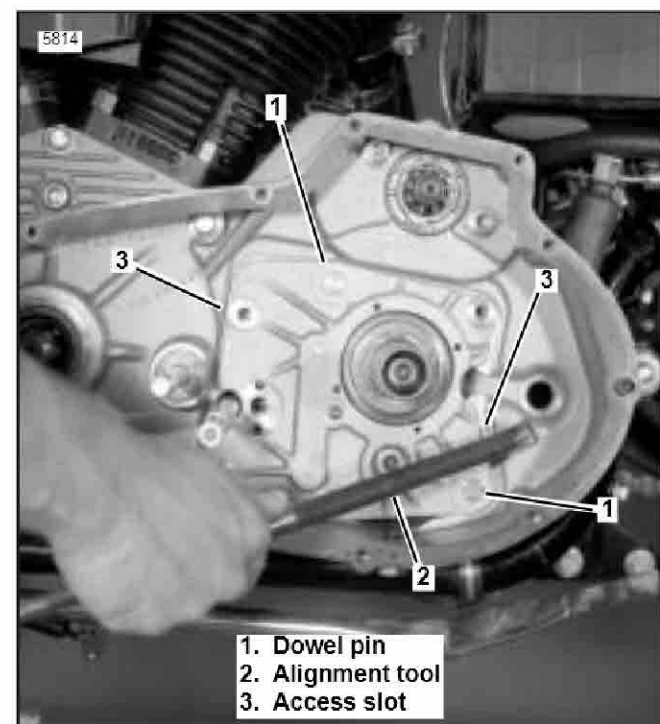


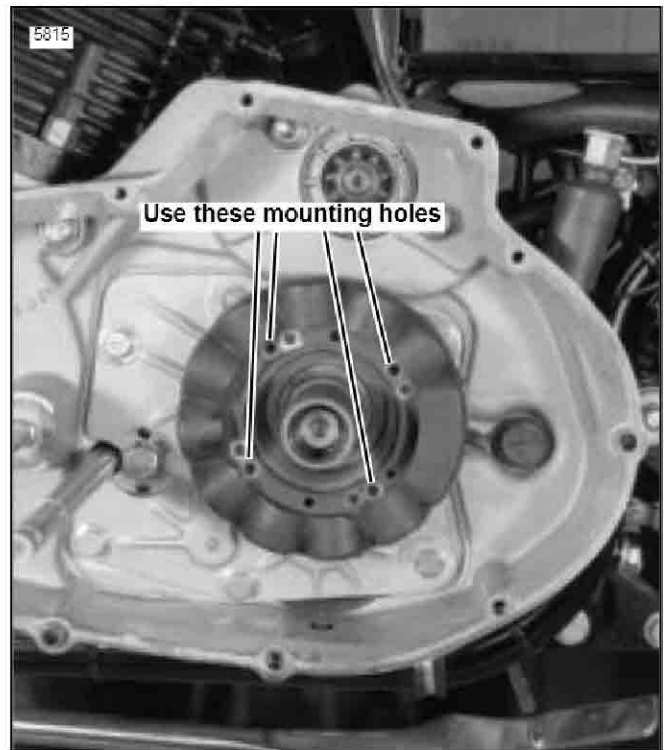
Figure 3. Access Door Removal

8. See Figure 2. Remove shifter mechanism from access cover by removing bolt and lockplate.
9. Remove the clutch gear and access cover as an assembly from the transmission.
10. See Figure 4. Remove and discard retaining ring, then remove the clutch gear and bearing as an assembly from the access cover (some clutch gears use a retaining ring to hold mainshaft ball bearing in place. Remove retaining ring and discard).
11. Install clutch gear into new access cover from kit.
12. Install new retaining ring with beveled side facing the transmission and flat side next to the bearing.
13. Install clutch gear and access cover to the transmission.
14. Place shifter mechanism on access cover. Secure shifter mechanism with bolt and lockplate. Bend tabs on lockplate down against the bolt.
15. Install access cover and transmission into crankcase. Carefully align access cover on dowel pins and gently tap (with a rubber mallet) into position. Secure access cover with four bolts. Tighten bolts to 14-19 ft-lbs.

**NOTE**

*Transmission mainshaft and countershaft end play should be checked after transmission access cover replacement; refer to appropriate XL Service Manual for correct specifications.*

16. See Figure 4. Position stator on access cover, align four holes in access door with four holes in stator. Insert new locking screws. Tighten screws to 30-40 in-lbs.

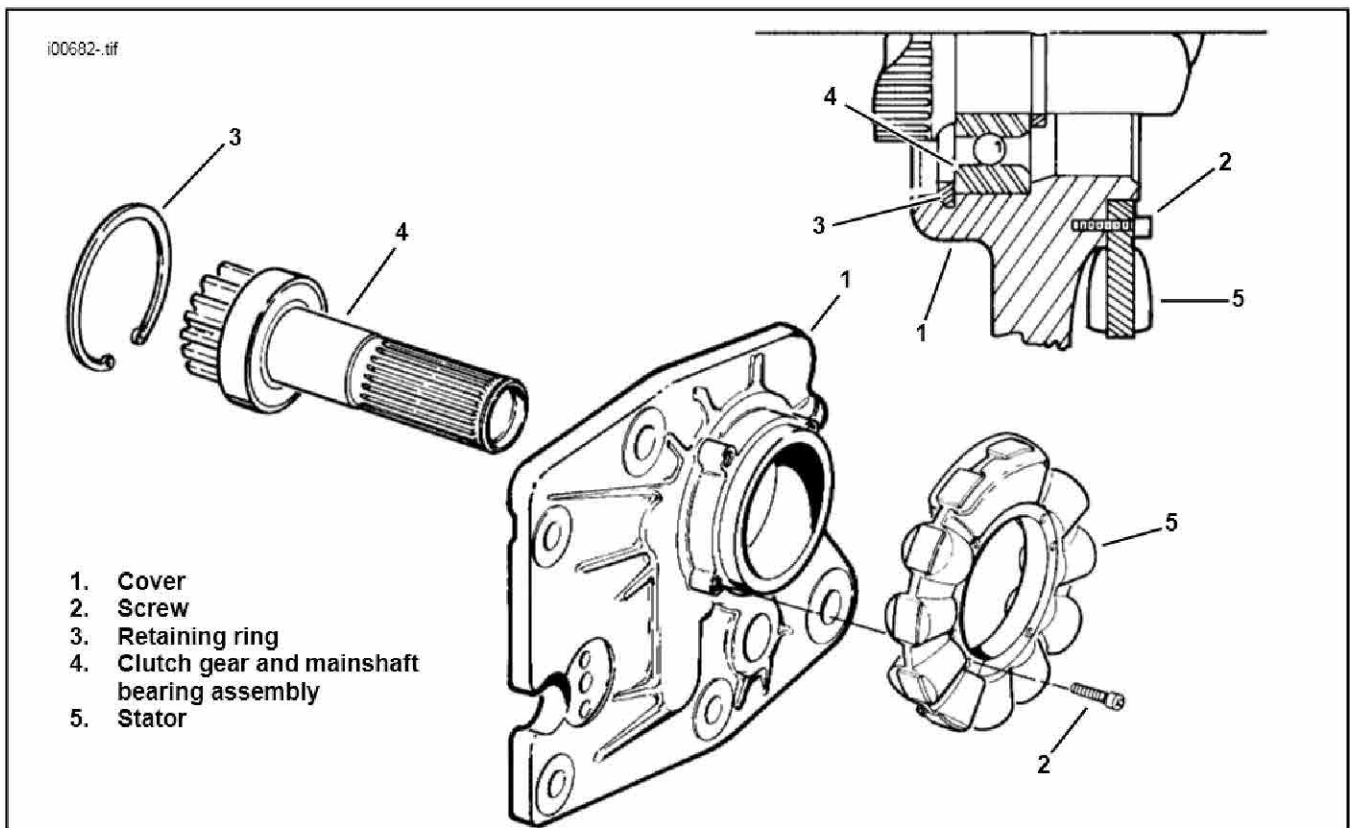


**Figure 5. Stator Mounting Holes**

**NOTE**

*Stators with eight mounting holes must use the proper holes as indicated in Figure 5.*

17. Install the clutch assembly, engine sprocket and primary chain as described in the appropriate XL Service Manual.



**Figure 4. Transmission Cover Kit**