



# INSTRUCTIONS

-J00053

REV. 6-26-03

*Kit Numbers 29208-87T, 29281-91T, 29283-92T, and 29320-93T*

## AIR CLEANER MOUNTING KIT

### General

These Teardrop Air Cleaner Kits are designed for installation on Models With CVH Carburetor (Part Numbers. 29285-88TA, 29286-88TA, and 29285-90TA) and on 1991 to 2003 XL (Sportster®) and 1340 Evolution® model vehicles. Use the following mounting kit in conjunction with the following vehicles:

<b>29208-87T</b>	1986-1990 XL models, 1984-1992 Evolution 1200 and 1340 models.
<b>29281-91T</b>	1991 to 2003 XL models
<b>29283-92T</b>	1993 and later 1340 models (except FXD)
<b>29320-93T</b>	1991 and later FXD models

The Evolution Mount Kit, Part No. **29208-87T**, contains the following components:

QTY	DESCRIPTION
2	Backplate bracket
2	Spacer (1340 models only)
2	Flatwasher, 5/16 in.
2	Lockwasher, 5/16 in.
2	Bolt, 5/16-18
2	Flatwasher, 1/4 in.
2	Lockwasher, 1/4 in.
2	Bolt, 1/4-20 x 1 in.

The Air Cleaner Breather Manifold Kit, Part No. **29281-91T**, contains the following components:

QTY	DESCRIPTION
1	Manifold assembly
6	Gasket
2	Banjo bolt
2	Mounting bracket
2	Bolt, 1/4-20 x 1 in.
2	Lockwasher, 1/4 in.
2	Flatwasher, 1/4 in.
1	Hose

The Air Cleaner Breather Manifold Kit, Part No. **29283-92T**, contains the following components:

QTY	DESCRIPTION
1	Manifold assembly
6	Gasket
2	Banjo bolt
2	Mounting bracket
2	Bolt, 1/4-20
2	Lockwasher, 1/4 in.
2	Flatwasher, 1/4 in.
4	Spacer
1	Hose
1	Gasket

The Air Cleaner Breather Manifold Kit, Part No. **29320-93T**, contains the following components:

QTY	DESCRIPTION
1	Manifold assembly
6	Gasket
2	Banjo bolt
2	Lockwasher
2	Flatwasher
1	Hose
2	Screw, hex head cap
3	Screw, captive
2	Gasket, air cleaner
4	Spacer
1	Spacer, air cleaner
2	Mounting bracket

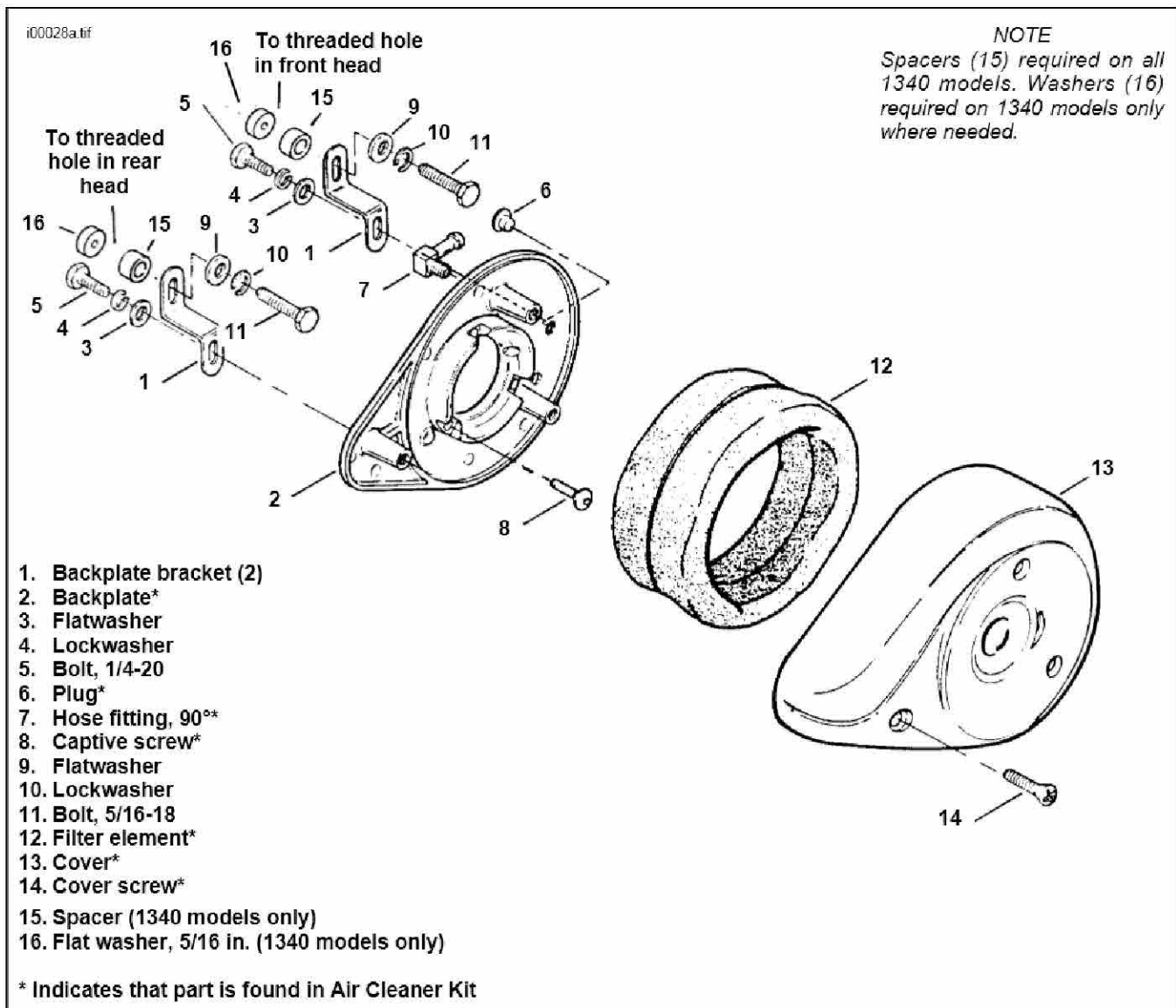


Figure 1. Air Filter Mounting - 1986-1990 XL models, 1984-1992 Evolution 1200 and 1340 models.

### Installation: Kit 29208-87T

- See Figure 1. Attach narrow slotted end of bracket (1) to upper front hole on rear of backplate (2) using the flatwasher (3), lockwasher (4) and 1/4-20 bolt (5) from mounting kit. Tighten bolt (5) finger tight.
- To install remaining bracket (1) to the rear hole of the backplate, repeat Step 1.
- Remove rubber plug (6) from lower tapped hole in back of backplate and install hose fitting (7). Crankcase vent hose may be connected later.
- Place a new gasket between backplate and carburetor flange and secure with the three captive screws (8). Tighten screws (8) to 3-5 ft-lbs.
- 1988 - 1990 XL Models Only.** Position brackets (1) over tapped holes in cylinder heads. Secure brackets with flatwashers (9), lockwashers (10) and 5/16-18 bolts (11) from mounting kit. Tighten bolts (11) to 10-12 ft-lbs.
- 1990 - 1992 1340 Models Only.** Position bracket (1) over tapped holes in cylinder heads. Insert spacers (15) and flat washers (16) as required between cylinder head and brackets. Secure brackets with flatwashers (9), lockwashers (10) and bolts (11) from mounting kit. Tighten bolts (11) to 10-12 ft-lbs.
- Tighten bolts (5) and place filter element (12) on backplate. Install the cover (13) and secure with screws (14).
- Connect crankcase vent to 90° fitting (7).

### NOTE

If crankcase vent hose is too short, see your Harley-Davidson dealer for a splicing connector and additional hose.

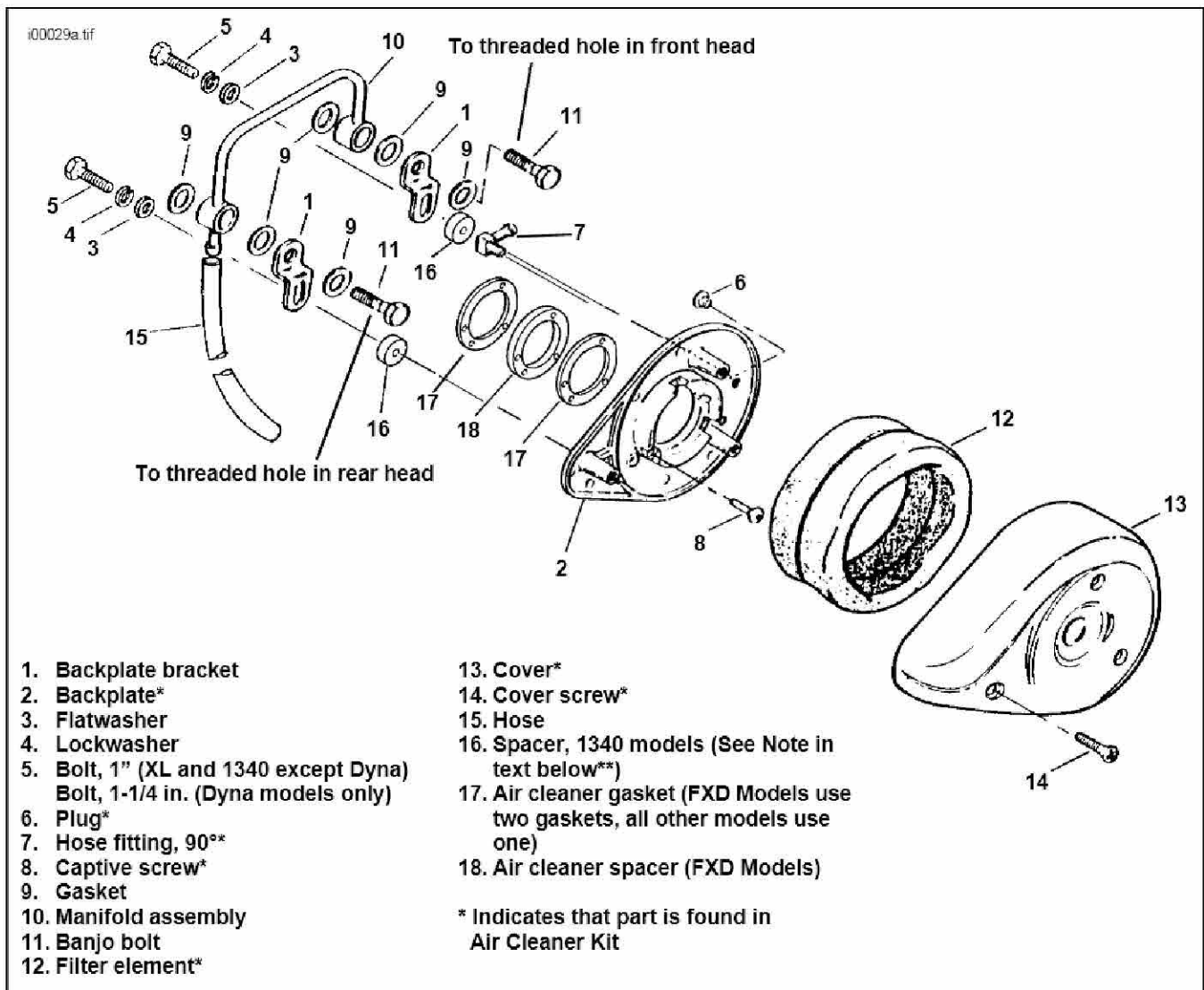


Figure 2. Air Cleaner Mounting Bracket Kit - 1991 and Later XL and 1993 and Later 1340 Models

### Installation: 29281-91T, 29283-92T, 29320-93T

1. See Figure 2. Remove rubber plug from lower tapped hole of backplate and install 90° fitting. Vent hose will be connected later.

#### NOTE\*\*

In the following Step 2, use 1-1/4 in. bolts and 4 spacers with Dyna models. All other 1340 models use 1 in. bolts and 2 spacers.

2. Locate brackets included with kit. Loosely install brackets on back of air cleaner backplate by inserting bolts (as directed in NOTE above), washers and lockwashers included with kit, through slotted holes in bracket and into two tapped holes in plate. On 1340 models only, install spacers (as directed in NOTE above) onto bolts. Tighten bolts only until they hold bracket loosely to plate.
3. Locate banjo bolts included with kit. Place one gasket over each banjo bolt. Insert bolts through holes in mounting brackets. Place a second gasket over bolts. Position manifold assembly over banjo bolts with hose fitting on manifold to rear of motorcycle. Install remaining gaskets over the ends of banjo bolts.
4. **FXD Models Only.** Install Spacer (18) and gasket (17) onto backplate using captive screws from mounting kit.
5. Holding assembly together, insert banjo bolts into tapped holes in cylinder head. Tighten each bolt a little at a time, until assembly is held loosely in place. On **Dyna models only**, tighten captive screws to 3 - 5 ft-lbs.
6. **All Models Except Dyna.** Line up three center holes in backplate with corresponding tapped holes in carburetor. Secure backplate to carburetor using three captive screws from air cleaner kit. Tighten captive screw to 3 - 5 ft-lbs.
7. Tighten banjo bolts to 10 - 12 ft-lbs. Tighten bolts holding backplate to brackets, until secure.
8. Locate hose included with kit. Install one end of hose on manifold fitting. Install other end to 90° fitting on backplate.