



INSTRUCTIONS

-J00048

REV. 8-26-99

Kit Number 29008-90A

C.V. CARBURETOR SCREAMIN' EAGLE AIR CLEANER

General

This kit is designed for installation on 1990 to 1992 C.V. carburetor-equipped Big Twin models.

See Service Parts Illustration for a list of kit contents.

NOTE

A Service Manual for your motorcycle is available at your Harley-Davidson Dealership.

CAUTION

Improper installation of this kit may result in severe engine damage. Follow the procedures listed in this Instruction Sheet and in the appropriate Service Manual. If the procedures are not within your capabilities, or if you do not have the correct tools, have your Harley-Davidson dealer perform the installation.

CAUTION

This engine related performance part is intended for High Performance or Racing applications and is not legal for sale or use on pollution controlled motor vehicles. This kit may reduce or void the limited vehicle warranty. Engine related performance parts are intended for the experienced rider only.

NOTE

To install on 1992 vehicles, Kit Part No. 29304-92 (Threaded Cylinder Head Insert Kit) is also required.

Removal- Stock Air Cleaner

CAUTION

Loosen each backplate-to-carburetor screw a few turns at a time while pulling backplate away from carburetor. This will prevent screws from engaging threads in backplate inserts. If screws engage insert threads, the inserts may be pulled out of backplate.

1. Remove stock air cleaner and backplate according to Service Manual instructions.
2. See Service Parts Illustration. Retain air cleaner cover (1) and button-head screw and washer (2).

Installation

1. See Service Parts Illustration. Remove "knockout" in the backplate (3) with a hammer and punch. Support backplate area around "knockout" during removal.
2. Place O-ring (5) on hose fitting (6) and install fitting in backplate knockout hole.

NOTE

Because of limited space behind backplate, it is necessary to install the hose fitting and hose before installing backplate on carburetor. To assure a leak-tight connection, the fitting must be pushed firmly

against the O-ring while the hose is pushed onto the fitting. The hose must touch the rear of the backplate. Install and tighten hose clamp (7) with hose and fitting firmly held against opposite sides of backplate.

3. Place hose (4) on hose fitting (6) and install a hose clamp (7). Hold the hose and fitting firmly in place against the backplate and tighten the hose clamp.

CAUTION

There are 3 screw holes and one vent hole on the carburetor throat flange. Be sure the gaskets, spacer, venturi, backplate and carburetor vent holes are correctly aligned in the next steps or the carburetor will not work correctly.

4. Position the venturi (8) on the backplate and insert the button head screws (9) (W/ Loctite patch) through the screw holes.
5. Assemble a gasket (10), the spacer (11) and a gasket (10), as shown.
6. Place the gaskets and spacer assembly on the back of the backplate, over the screws.
7. Place the assembly on the carburetor throat and install the screws. Be sure the vent holes are correctly aligned. Tighten screws.
8. **On 1992 models, only.** Install Threaded Insert Kit, Part. No. 29304-92, then proceed.
9. Place the brackets (12) in position on the cylinder head bosses and install the hex head screws (13), lockwashers (14) and flat washers (15). Be sure the flat washers are under the heads of the brackets and the lockwashers are under the heads of the screws. Do not tighten at this time.
10. Install the hex head screws (16), lockwashers (17), flat washers (18) and nuts (19) through the backplate and brackets. Be sure the flat washers are against the brackets and the lockwashers are under the nuts. Do not tighten at this time.
11. Check the alignment and tighten the fasteners.
12. Route breather hose from backplate to engine crankcase breather line, trim as necessary. Push supplied hose nipple (20) into breather hose. Place the other end of the hose nipple in the engine crankcase breather line.
13. Place the original air cleaner element (21) on the backplate, with the rubber portion against the backplate. Install the nylon flat washers (22) and Ny-lock nuts (23).

NOTE

When installing replacement air cleaner cover in the next step, apply Loctite 243 (blue, HD P/N 99642-97, not included) to air cleaner cover button head screw.

14. Place the air cleaner cover (1) in position, apply Loctite 243 (blue), and install the button head screw and washer (2).

Air Cleaner Maintenance

1. Remove air cleaner cover and inspect element every 5000 miles, or more often under dusty conditions.
2. To clean element, remove and wash by rolling it, on edge, in a shallow pan containing enough Air Cleaner/Degreaser, Part No. 99883-88T to cover no more than 3/4 the depth of filter pleats. Do not let dirty solution get inside element.
3. Remove element from cleaner/degreaser and allow five minutes for cleaner to dissolve dirt. From the inside out, rinse

the element with cold water. Shake and allow to air dry. Do not dry with compressed air.

4. Re-oil element using Air Cleaner Oil, Part No.99882-88T. Apply along the full length of each pleat and allow to set until the element is a uniform color. Allow excess oil to drain. Install element and cover.

NOTE

A replacement element, Part No. 29055-89 can be purchased from your Harley-Davidson dealer.



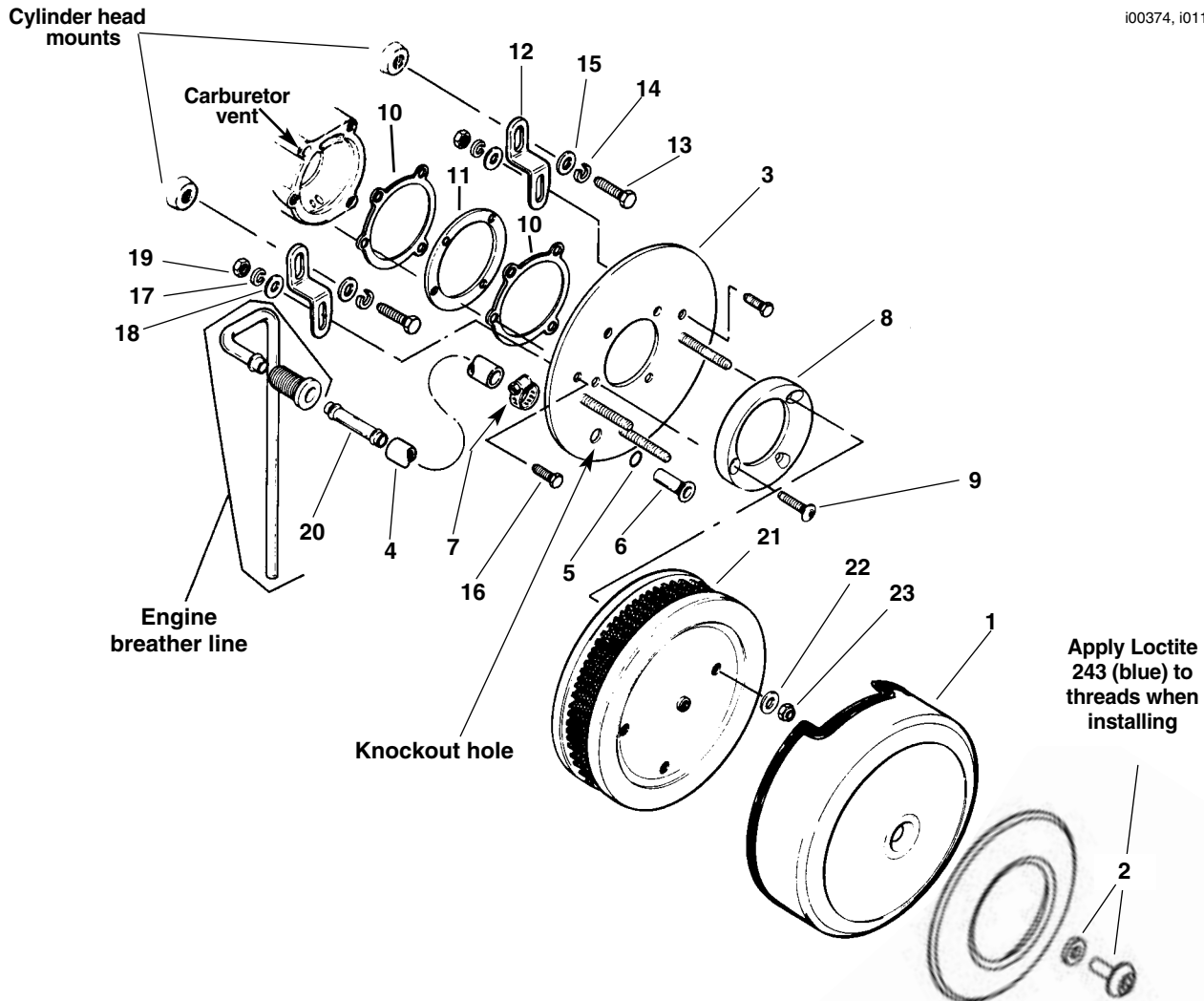
Service Parts

Part No. 29008-90A

Date 8/99

C.V. Carburetor Screamin' Eagle Air Cleaner

i00374, i011706b



Apply Loctite 243 (blue) to threads when installing

Item	Description	Part No.	Item	Description	Part No.
1	Air Cleaner Cover	original equipment	12	Bracket (2)	Not sold *
2	Button head screw and washer	original equipment	13	Hex head screw, 1/4" (2)	Not sold *
3	Backplate	29023-93	14	Lockwasher, 1/4" (2)	Not sold *
4	Hose, 3/8"	63552-82	15	Flat washer, 1/4" (2)	Not sold *
5	O-ring	11110	16	Hex head screw, 5/16" (2)	Not sold *
6	Hose fitting	29034-85	17	Lockwasher, 5/16" (2)	Not sold *
7	Hose clamp	9946	18	Flat washer, 5/16" (2)	Not sold *
8	Venturi	29179-88	19	Nut (2)	Not sold *
9	Button head screw (3)	927A	20	Hose nipple	63792-77A
10	Gasket (2)	29059-88A	21	Air cleaner element	29055-89
11	Spacer	29265-88	22	Nylon flat washer (3)	91725-83
			23	Lock nut (3)	7671

*Items 12-19 make up air filter mounting kit 29226-90.