



# INSTRUCTIONS

-J00036

REV. 6-1-94

Kit Number 25461-94

## SPORTSTER CHROME-PLATED PRIMARY COVER KIT

### General

This kit is designed for 1994 and later XLH Sportster® models. This kit may also be installed on 1991-1993 XLH Sportster models if Primary Cover Conversion Hardware Kit Part No. 25467-94 is also installed.

Kit 25461-94 contains the following components:

QTY	DESCRIPTION
2	O-ring, chain inspection cover screws
1	O-ring, clutch cable
1	O-ring, chain inspection cover
1	Primary chain cover, chrome
1	Gasket, clutch inspection cover (square ring)
1	Clutch inspection cover, chrome
1	Chain inspection cover, chrome
1	Primary cover gasket
1	Oil seal, shifter shaft

### WARNING

The rider's safety depends on the correct installation of this kit. Use the appropriate Service Manual instructions for all installation procedures. If the procedure is not within your capabilities, or if you do not have the correct tools, have your Harley-Davidson dealer perform this installation.

### WARNING

To avoid accidental start-up of vehicle and possible personal injury, disconnect battery cables from battery (negative cable first) before proceeding. Always disconnect the negative cable first. If the positive cable should contact ground with the negative cable installed, the resulting sparks may cause a battery explosion producing serious personal injury and/or property damage.

### Installation

#### 1994 AND LATER MODELS

1. Refer to the applicable Service Manual, and remove the stock primary cover.
2. Remove the chain adjuster and clutch release components from the stock primary cover, and install them on the chrome primary cover.
3. Install the chrome primary cover, adjust chain tension and clutch free play, and add 32 fluid ounces of Harley-Davidson Sport-Trans Fluid (Part No. 99896-88, quart size) through clutch inspection cover opening in accordance with applicable Service Manual procedures.
4. Install all remaining components according to appropriate Service Manual procedures.

#### 1991-1993 MODELS

Follow the procedures in Instruction Sheet 25467-94 to install this kit.

#### NOTE

The "ADDITIONAL REQUIRED PARTS" listed in Instruction Sheet 25467-94 are included in this kit, P/N 25461-94.



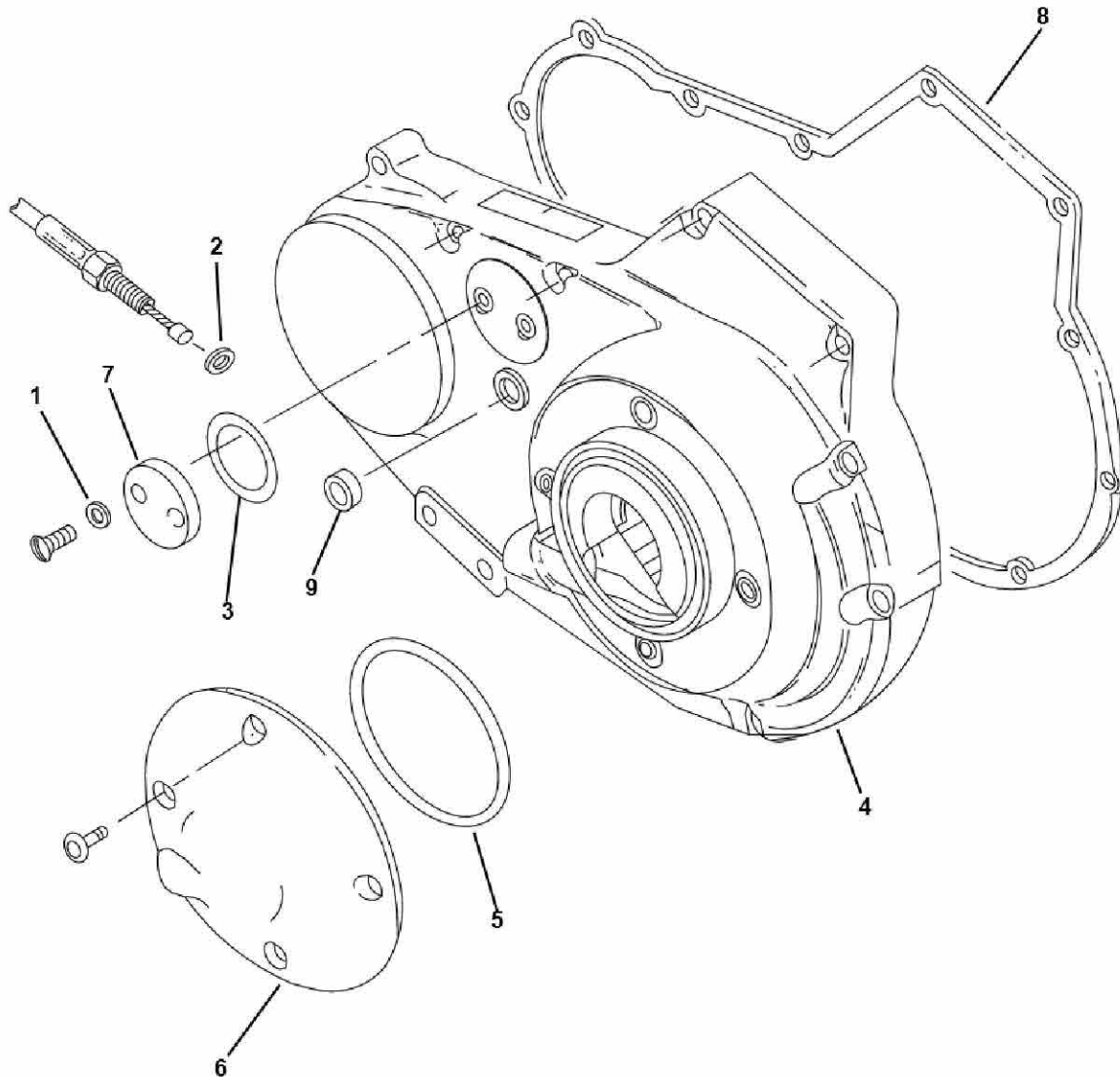
# Service Parts

Part No. 25461-94

Date 6/94

Chrome-Plated Primary Cover Kit

sp25461



Item	Description	Part No.
1	O-ring, chain inspection cover screws	11171
2	O-ring, clutch cable	11179
3	O-ring, chain inspection cover	11188
4	Primary chain cover, chrome	25460-94
5	Gasket, clutch inspection cover (square ring)	25463-94
6	Clutch inspection cover, chrome	34760-94
7	Chain inspection cover, chrome	34761-94
8	Primary cover gasket	34955-89A
9	Oil seal, shifter shaft	37101-84