



INSTRUCTIONS

-J00019

REV. 5-1-96

Kit Numbers 23947-88R (STD), 23977-88R (+.001), 23978-88R (+.002)

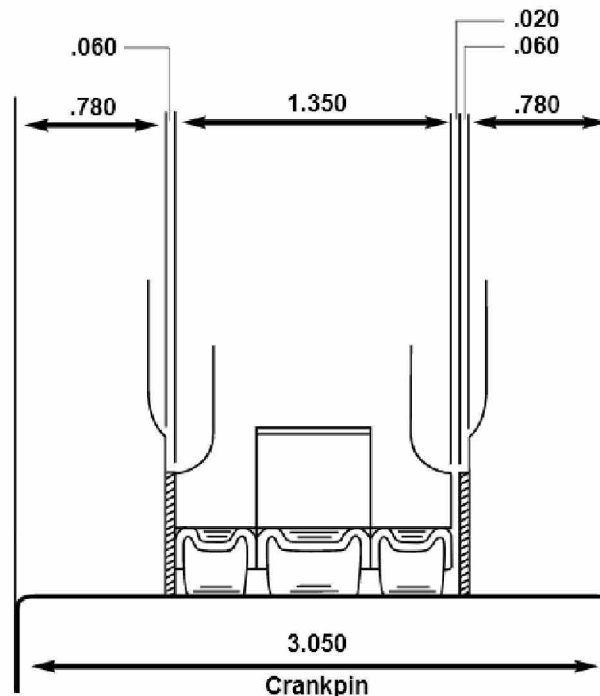
The connecting rod bore size chart below gives the correct bore size for different bearing/crankpin sizes. Machine connecting rods to sizes given in chart.

Surface finish must be 6 - 10 RMS.

CONNECTING ROD BORE I.D. CHART

Crankpin size	Packaging Color Identification			
	GREEN M6 M8 M7 M9	WHITE M4 M6 M5 M7	BLUE M2 M4 M3 M5	RED P0 M2 M1 M3
Standard	2.1213	2.1215	2.1216	2.1218
+0.001	2.1223	2.1225	2.1226	2.1228
+0.002	2.1233	2.1235	2.1236	2.1238

Bore Tolerance + 0.0001 in.



Connecting Rod and Bearing Assembly
(1989 and Later)

NOTE

Shown dimensions are nominal;
actual dimensions may vary slightly.