

## EFI RACE TUNER 2008 TOURING CALIBRATIONS

Users have reported issues with tuning the 100% Throttle Position column of the VE tables on certain 2008 Touring calibrations for EFI RACE TUNER, Version 4.7.7.

It is suggested to delete the following calibrations from your computer:

**200TW001-A1**

**200TX001-A1**

**200TY001-A1**

**200TZ001-A1**

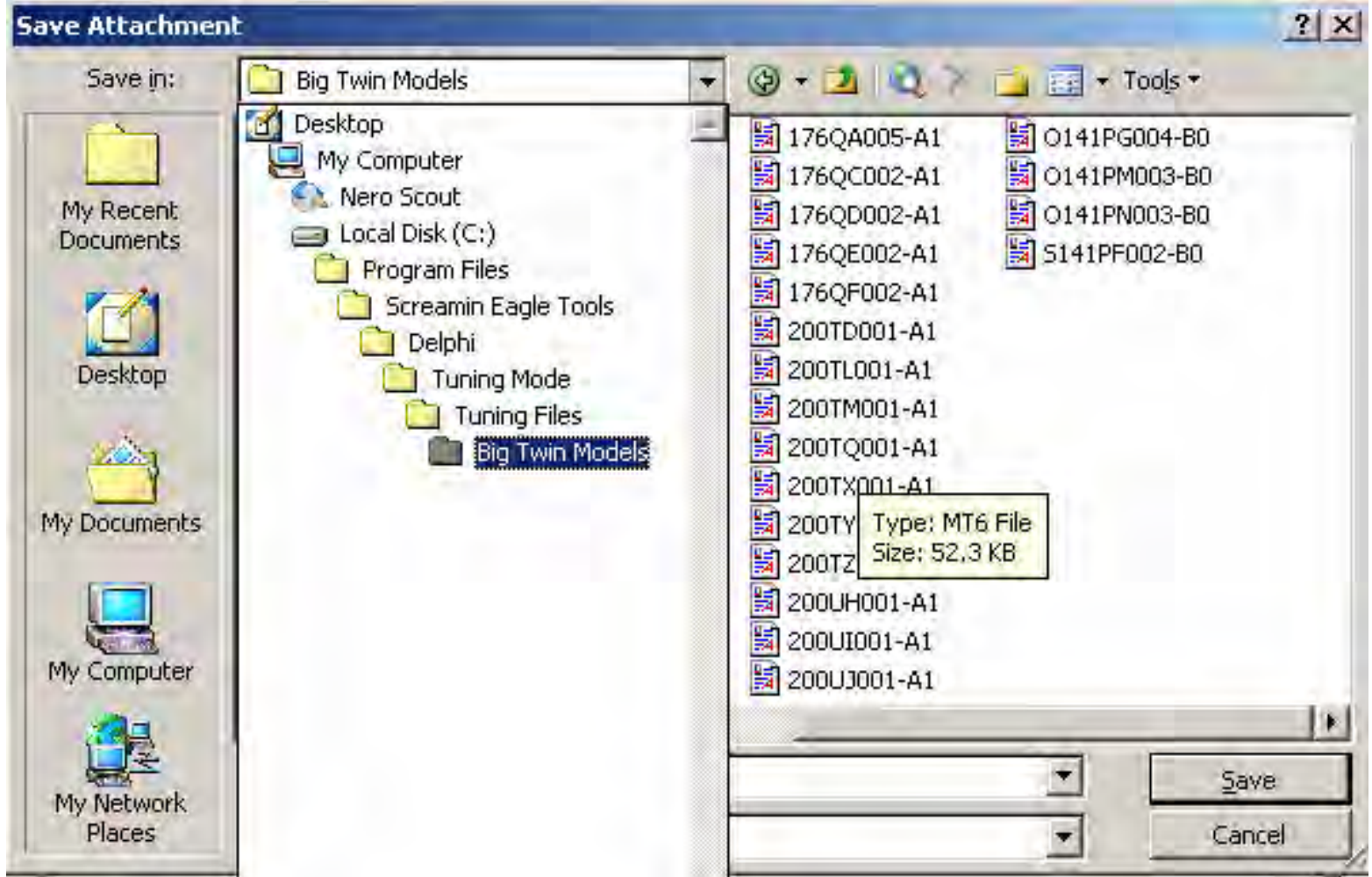
There are four calibrations designed to replace the deleted calcs attached to this Tech Tip. Use the following instructions to save these calibrations to your computer:

### To Open and Save attachments:

You will not be able to **Open** the files on your computer unless you have the EFI Race Tuner software version 477 installed. It is recommended to right click on the files and **Save** the files to your computer. Digital Tech II has the ability to access h-dnet.com and has the Adobe 7 software which is best used to view this Tech Tip. The following steps should make it clear the best path to use.

- Click the **Attachments** button to view the attachments.
- Select the attachment (EFI Tuner calibration file) you want to install. Right click.
- Select **Save Attachment** or **Save As**.
- You need to save to same location as other EFI Tuner files.
- The Path is: My Computer > Local Disc( C ) > Program Files > Screamin' Eagle Tools > Delphi > Tuning Mode > Tuning Files > Big Twin Models
- You will notice that a similar version of the file already exists in this location; version –200UH001-A1, this is the cal we used to create these new calcs. Do not delete this cal.

You can now open and install the calibration files using EFI Tuner / Tuning Mode version 477 and tune the motorcycle as usual



### Copy & Paste

We have also attached a copy of the Tech Tip from October 11, 2004. This TT covers the process for converting older calibration files into newer calcs. This is the same process we used to create these working calcs. If for any reason you should want to use an older or a different calibration, you will be able to follow the attached TT and copy and paste the tables you would like to use into the calibration you are using. Make sure you also correct any Tuning Constants as well.