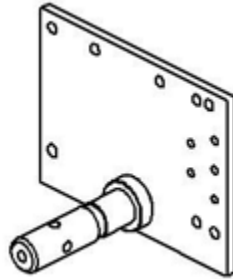


TT277 – November 22, 2006

Twin Cam Engine and 6-Speed Transmission Cradles

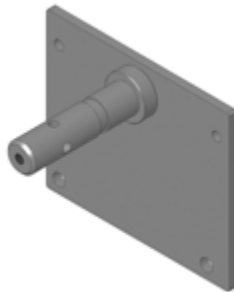
Twin Cam Engine Cradle

The Twin Cam Engine Cradle has been updated to work on the 2007 Model Year Twin Cam 96B engines. The part # is HD-42310-25A. This will also continue to work on the Twin Cam 88B engines.



6-Speed Transmission Cradle

The 6-Speed Transmission Cradle has also been updated for the 2007 models and will retrofit to the 2006 Dyna model as well. The new part # is HD-42310-50A.



NOTE: These items are purchased from SPX Kent-Moore; there is a link to them on the service page of h-dnet.